

Virginia

REVISED

Designed by Bethany Fuller of Grace's Dowry Quilts
Featuring the Virginia Collection by *Williamsburg*
Quilt Size 93" x 93"



Check www.windhamfabrics.com Free Project section to see if there are any pattern updates before you start your quilt

WINDHAM *W* **FABRICS**

812 Jersey Ave ~ Jersey City, NJ 07310 ~ 201.659.0444 ~ FAX: 201.659.9719
www.windhamfabrics.com email: retail@windhamfabrics.com

Virginia

Designed by Bethany Fuller of Grace's Dowry Quilts

Featuring the Virginia Collection by *Williamsburg*
Quilt Size 93" x 93"



35109A-1



36154-2



36155-3



36155-4



36156-2



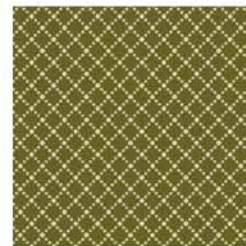
36156-5



36157-1



36157-2



36158-3



36159-1



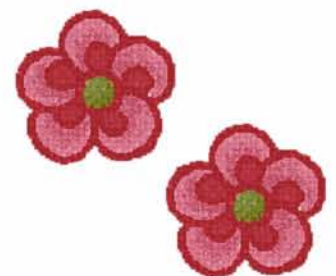
36159-3

Fabric Requirements

- 1 ½ yds Outer Border (36159-3)
- 2 ½ yds Focus Fabric (35109A-1)
- 1 yd Stripe (36154-2)
- 1 ½ yds Cream Background (36157-1)
- 1 ¾ yds Burgundy Print (36156-2) – includes binding
- ½ yd Blue Print (36156-5)
- 1/3 yd Gold Floral (36155-4)
- 1/3 yd Cream Lattice Print (36159-1)
- ½ yd Green Floral (36155-3)
- 1 yd Medium Green (36157-3)
- 2/3 yd Dark Green (36158-3)
- 8 ½ yds backing

Cutting Instructions

From the Outer Border, cut 10 – 4 ½" strips



Virginia

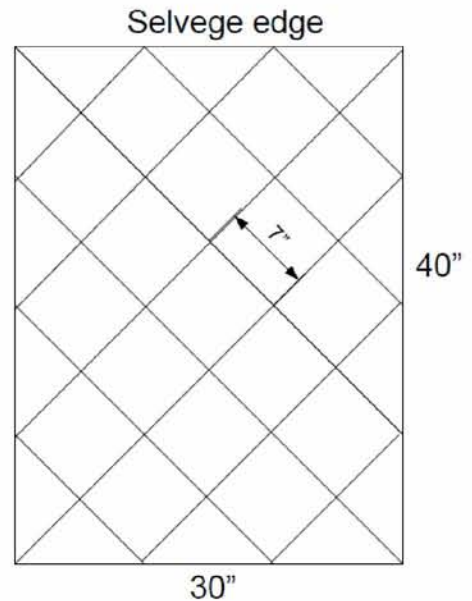
Page 2

From the Focus Fabric, cut:

- 2 – 18 ¼" strips; cut into 4 – 18 ¼" squares, cut twice diagonally for side triangles
- 1 – 9 ⅜" strip; cut into 2 – 9 ⅜" squares, cut once diagonally for corner triangles
- 2 – 9" strips; cut into 8 – 9" squares for square in a square blocks
- 9 – 2" strips; cut into
 - 16 – 2" x 9 ½" strips for log cabin blocks
 - 16 – 2" x 11" strips for log cabin blocks

From the stripe, cut:

- 1 – 30" strip;
- From this strip, 7" strips on the 45 degree bias.
- From each 7" bias strip, cut 7" squares, and half square triangles, following the diagram below.
- Cut the squares once on the diagonal, careful to cut with the stripe going the correct direction. Some of the triangles will be unusable because of the direction of the stripe.
- You need 8 sets of 4 triangles.



From the cream background, cut:

- 6 – 2" strips; cut into:
 - 16 – 2" x 6 ½" strips for log cabin blocks
 - 16 – 2" x 8" strips for log cabin blocks
- 9 – 2 ½" strips for star blocks
- 3 – 5 ¼" strips; cut into 17 – 5 ¼" squares, cut diagona

From the Burgundy Print, cut:

- 5 – 4 ⅞" strips; cut into 34 – 4 ⅞" squares, cut diagonally once for star blocks
- 2 – 3 ½" strips; cut into 16 – 3 ½" squares for log cabin blocks
- 10 – 2 ¼" strips for binding

From the Blue Print, cut:

- 3 – 5 ¼" strips; cut into 17 – 5 ¼" squares, cut diagonally twice for star blocks

From the Gold Floral, cut:

- 2 – 4 ½" strips; cut into 17 – 4 ½" squares for star blocks

From the Cream Lattice Print, cut:

- 4 – 2" strips; cut into:
 - 16 – 2" x 3 ½" strips
 - 16 – 2" x 5" strips for log cabin blocks

From the Green Floral, cut:

- 7 – 2" strips; cut into:
 - 16 – 2" x 8" strips
 - 16 – 2" x 9 ½" strips for log cabin blocks



Virginia

Page 3

From the Medium Green, cut:

5 – 2” strips; cut into:

16 – 2” x 5” strips

16 – 2” x 6 ½” strips for log cabin blocks

9 – 2 ½” strips for star blocks

From the Dark Green, cut:

10 – 2” strips; cut into:

16 – 2” x 11” strips

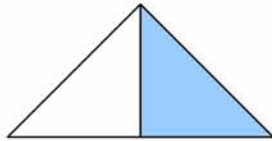
16 – 2” x 12 ½” strips for log cabin blocks

Sewing Instructions

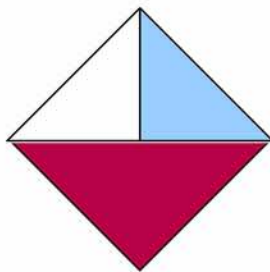
Star Blocks:

From the cream background and medium green 2 ½” strips, make 9 strip sets. Sub-cut these into 136 – 2 ½” segments. Sew these into 4-Patch units. Make 68.

Sew the light background quarter square triangles to the blue quarter square triangles. Press seams to one side.



Sew these units to the burgundy half square triangles. Press toward the burgundy triangles.



Using the gold floral squares, the 4-Patches and the triangle units, assemble 17 Star blocks.

Press seams toward the gold center and the 4-Patches.

Blocks should measure 12 ½” unfinished.



Virginia

Page 4

Log Cabin Blocks:

Lay out all your 2" log pieces by size. Using a scant 1/4" seam allowance, begin sewing your log cabin blocks. Press all seams away from the center. Use the block below for placement. Blocks should measure 12 1/2" unfinished.

If you are not familiar with how to piece a Log Cabin block, visit your local quilt shop and ask for their help. They'd be happy assist you!



Square in a Square Blocks:

Using the Focus Fabric squares and the Stripe triangles, make 8 square in a square blocks. Sew a stripe triangle to each side of the square. Press seams away from center. Trim to 12 1/2" if necessary.



Quilt Assembly

Using the quilt photo, lay your blocks out with the setting triangles. Sew into diagonal rows. Sew rows together to complete quilt center.

Sew 4 1/2" Outer Border strips together end to end.

Measure quilt center well in several places. Cut 2 borders for the sides to the same measurement. Pin well to quilt and sew. Repeat for top and bottom borders.

Quilt, bind and enjoy!

**If you have questions about this quilt, please contact
Bethany Fuller at: bethanyfuller@gmail.com**

**Be sure to visit www.windhamfabrics.com to see the complete collection
and to download other Free Projects**



WINDHAM FABRICS

