

"Under the Stars"

Designed by Bethany Fuller of Grace's Dowry Quilts
Featuring the Hanna Wallis Collection in Association
with the Daughters of the American Revolution
Size: 58" x 73"



WINDHAM *W* FABRICS

812 Jersey Ave ~ Jersey City, NJ 07310 ~ 201.659.0444 ~ FAX: 201.659.9719
www.windhamfabrics.com email: retail@windhamfabrics.com

"Under the Stars"

Designed by Bethany Fuller of Grace's Dowry Quilts
Featuring the Hanna Wallis Collection in Association
with the Daughters of the American Revolution
Size: 58" x 73"



31999-4 purple



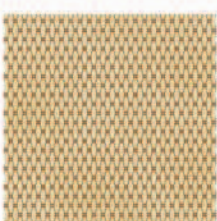
32000-1 blue



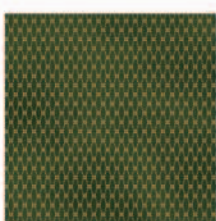
32000-3 brown



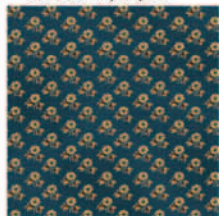
32001-6 red



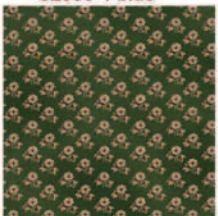
32002-3 brown



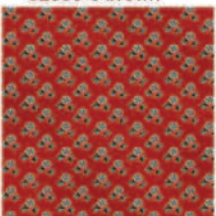
32002-5 green



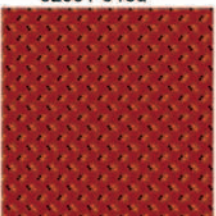
32003-1 blue



32003-5 green



32003-6 red



32004-6 red



32004-7 cream-red



32004-8 cream-black



32005-6 red



32006-1 blue



32006-5 green



32006-6 red



32007-2 gold



32008-3 brown



32009-1 blue



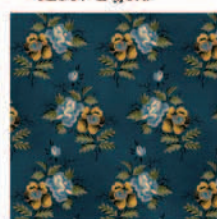
32009-4 purple



32010-1 blue



32010-2 gold



32011-1 blue



32011-3 brown

Fabric Requirements

Outer Border, Binding and Cornerstones (32008-3) - 2 yds

Middle Border (32005-6) - 2 yds

Inner Border (32002-5) - 1/3 yd

Setting Triangles (31999-4) - 7/8 yd

Sashing (32007-2) - 5/8 yd

For Blocks:

1/4 yd EACH of 9 lights - 32001-6, 32002-3, 32004-7, 32004-8, 32006-1, 32006-5, 32006-6, 32010-1, 32010-2

1/4 yd EACH of 9 darks - 32000-1, 32000-3, 32002-5, 32003-1, 32003-5, 32003-6, 32004-6, 32008-3, 32011-1

1/8 yd EACH of 32009-1, 32009-4, 32011-3

Backing - 3 3/4 yds

Cutting Instructions

From Outer Border, Binding and Cornerstone fabric (32008-3), cut:

4 - 4 1/2" LENGTHWISE strips for Outer Border

5 - 2 1/4" LENGTHWISE strips for Binding

2 - 2" strips; sub-cut into 31 - 2" squares for Sashing Cornerstones.

WINDHAM FABRICS

"Under the Stars"

Page 2

From Middle Border fabric (32005-6) cut 4 – 2 ½" fussy-cut strips.

From Inner Border fabric (32002-5) cut 6 – 1 ½" strips.

From Setting Triangle fabric (31999-4) cut:

2 – 14" strips. From these strips, cut:

3 – 14" squares; cut diagonally twice for side triangles.

2 – 7 ¼" squares; cut diagonally once for corner triangles.

From Sashing fabric (32007-2) cut:

12 – 2" strips. Cut these strips into 48 – 2" x 9 ½" rectangles.

From EACH of the 9 dark fabrics, cut:

8 – 2 ⅝" squares

16 – 2 ⅝" squares; cut diagonally once.

From EACH of the 9 light fabrics, cut:

8 – 2 ⅝" squares

16 – 2 ⅝" squares; cut diagonally once.

From remaining fabric, cut a total of 18 – 3 ½" squares for block centers.

Quilt Constuction

For each block, you will need:

1 – 3 ½" square for the center

4 – 2 ⅝" squares of light and 16 matching triangles

4 – 2 ⅝" squares of dark and 16 matching triangles

You can make your combinations the same or mix them up, it doesn't matter. You have 2 blocks worth of each fabric.

Make Square in a Square blocks with the 2 ⅝" squares and the triangles.

Each block needs 4 light and 4 dark centered

Square in a Square blocks made with the same fabrics.

To make a Square in a Square block, start by finger pressing your center square in half to mark the center. Also finger press the triangles to find their centers. Line up creases and sew a triangle to opposite sides of the square. Press triangles out. Finger press square the other direction for remaining sides and repeat process.

Trim if necessary to 3 ½".

Sew block together according to picture.

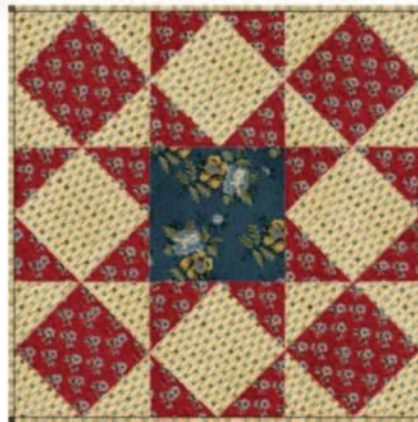
Press seams open to reduce bulk.

Repeat process to make a total of 18 blocks.

They should measure 9 ½" inches.

Sew blocks on point with sashings, cornerstones and setting triangles.

Piece Inner Border together with mitered seams into one long strip.



"Under the Stars"

Page 3

Measure quilt center carefully and cut Inner Border accordingly, starting with the long sides. Pin well and sew. Repeat for top and bottom. Press away from quilt center.

You may want to miter the corners of your Middle Border. If you don't care to, then follow the same process to add Middle Borders and Outer Borders.

Quilt, bind and enjoy!

**For questions about this quilt or to see more of the
quilts designed by Bethany Fuller visit:**

www.gracesdowryquilts.com



**Always look on our website before starting your project to see
if there are any updates or corrections**

**Be sure to visit www.windhamfabrics.com to see the complete collection
and to download this and other Free Projects**

WINDHAM *W* FABRICS