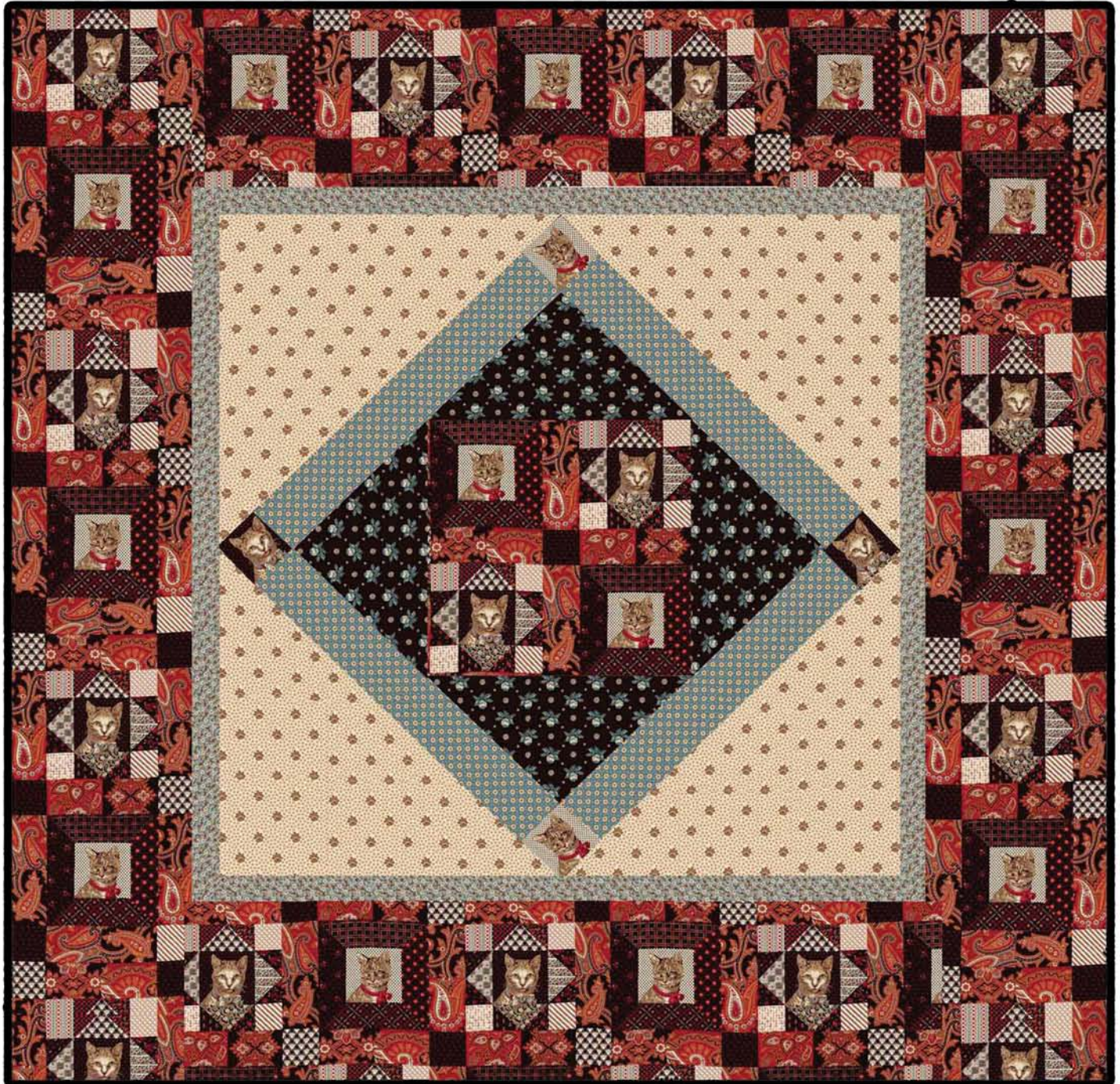


“To the Manor Born”

Designed by Mary Koval and Theresa Leppert
Featuring the Cat in the Manor Collection by Mary Koval
Size: 50” x 61”



WINDHAM FABRICS

812 Jersey Ave ~ Jersey City, NJ 07310 ~ 201.659.0444 ~ FAX: 201.659.9719
www.windhamfabrics.com email: retail@windhamfabrics.com

“To the Manor Born”

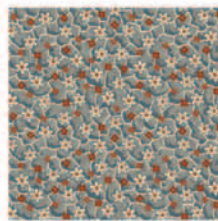
Designed by Mary Koval and Theresa Leppert
Featuring the Cat in the Manor Collection by Mary Koval
Size: 50” x 61”

Yardage Requirements

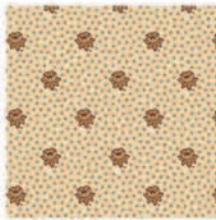
- 31945-X Cat Panel for borders, center & corner blocks = 2 yards
- 31940-1 black foulard fabric first set of triangles = 1/3 yard
- 31936-2 cream pattern second set of triangles = 1/2 yard
- 31944-4 blue pattern first border with cat corner stones = 1/4 yard
- 31937-4 blue pattern for middle border = 1/3 yard



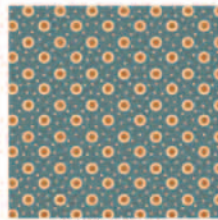
31940-1



31937-4



31936-2



31944-4



31945-X

Cutting Directions

- Center block Patt 31945-X is cut 14”
- First set of triangles Patt 31940-1: Cut 2 squares 10” cut these in half to make 4 triangles
- First border is cut 3 1/2” and the cats (4 of them) are fussy cut 3 1/2” square
- Second set of triangles Patt 31936-2: Cut 2 squares 18” cut these in half to make 4 triangles
- Middle border Patt 31937-4 is cut 2”
- Outer border Patt 31945-X is cut 11”

WINDHAM FABRICS

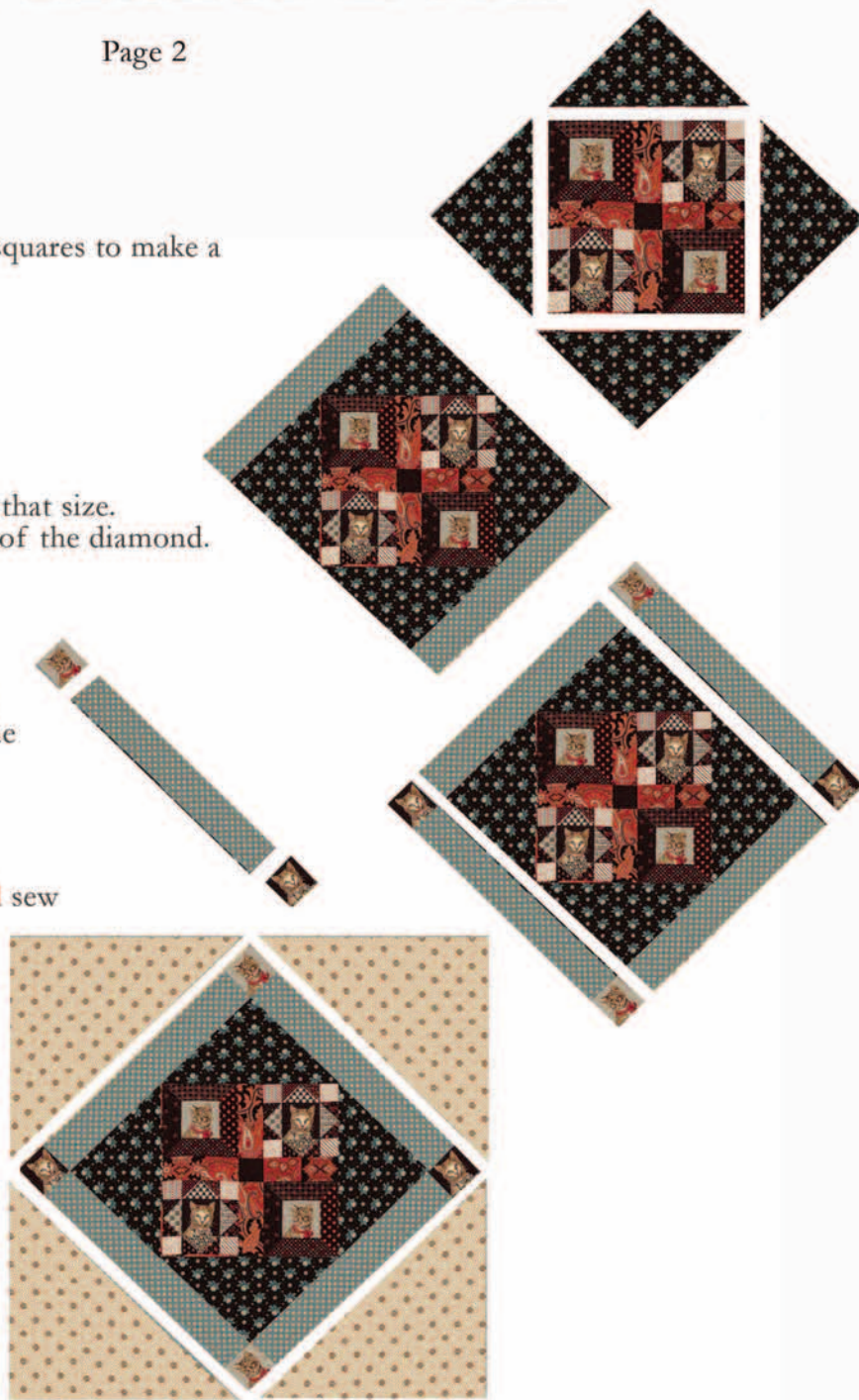


“To the Manor Born”

Page 2

Assembly:

- Sew the triangles made from your 10” squares to make a square in a diamond.
- Measure this and cut 4 (3 ½” strips) to that size. Sew 2 of these strips to opposite sides of the diamond.
- Sew the fussy cut squares to both sides of the remaining strips. Sew these to the other two sides of the square.
- Next take the other set of triangles and sew them to the assembled quilt.



- Sew on the 2” border, then the 11” border. Quilt as desired and bind. **ENJOY!**

Be sure to visit www.windhamfabrics.com to see the complete collection and to download this and other Free Projects

WINDHAM FABRICS

