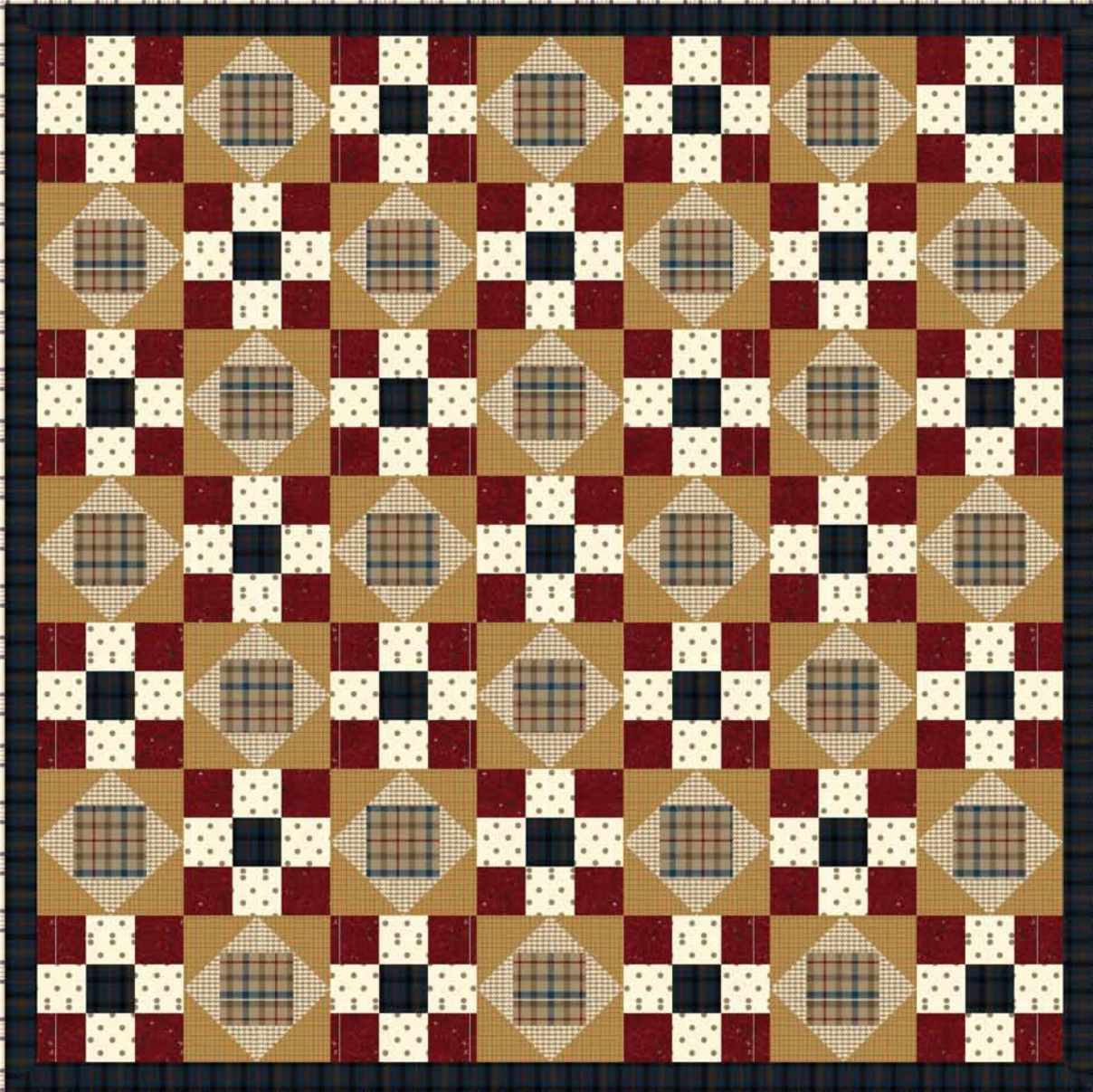


# "THIS & THAT - BASIC ELEMENTS"

Designed by Jean Ann Wright

Featuring the Flannel Elements Collection from Windham Fabrics



Queen Topper 81" x 81"



**WINDHAM FABRICS**



812 Jersey Ave ~ Jersey City, NJ 07310 ~ 201.659.0444 ~ FAX: 201.659.9719  
www.windhamfabrics.com email: retail@windhamfabrics.com

# “THIS & THAT - BASIC ELEMENTS”

Designed by Jean Ann Wright  
Featuring the Flannel Elements Collection from Windham Fabrics  
Quilt Sizes: Queen Topper 81" x 81" (\*48" x 57" Crib Quilt)  
Block Size: 9"

## Fabric Requirements and Cutting

*(\*All directions and measurements in parentheses are for the crib quilt.)*

All border measurements are the exact length required plus seam allowances.  
WOF refers to width of fabric, approximately 42" wide.

1 yd. (*\*1/2 yd.*) Fabric A – 31603-7 Cream with Tan Dots (Nine Patch blocks)  
Cut 100 (*\*40*) squares 3½" x 3½".

¾ yd. (*\*1/2 yd.*) Fabric B – 31607-4 Tan Houndstooth Check (Square in a Square blocks)  
Cut 24 (*\*10*) squares 5¾" x 5¾", cut in half diagonally twice to make  
96 (*\*40*) quarter-square triangles.

1¼ yds. (*\*5/8 yd.*) Fabric C – 31609-6 Yellow Plaid (Square in a Square blocks)  
Cut 48 (*\*20*) squares 5½" x 5½", cut in half diagonally to make  
96 (*\*40*) half-square triangles.

2½ yds. (*\*1½ yds.*) Fabric D – 31610-7 Cream/Black Plaid (outer border)  
Cut 2 strips 7½" x 81½" (*\*5½" x 48½"*) for top/bottom borders, cut lengthwise.  
Cut 2 strips 7½" x 67½" (*\*5½" x 47½"*) for side borders, cut lengthwise.

1 yd. (*\*1/2 yd.*) Fabric E – 31613-3 Red Spots (Nine Patch blocks)  
Cut 100 (*\*40*) squares 3½" x 3½".

½ yd. (*\*3/8 yd.*) Fabric F – 31615-4 Tan Plaid (Square in a Square blocks)  
Cut 24 (*\*10*) squares 5" x 5".

1¾ yds. (*\*1 yd.*) Fabric G – 31615-2 Blue Plaid (Nine Patch blocks, inner border,  
binding)  
Cut 8 strips 2½" x WOF (*\*5 strips 1½" x WOF*) and piece to make the following:  
2 top/bottom borders 2½" x 67½" (*\*1½" x 38½"*).  
2 side borders 2½" x 63½" (*\*1½" x 45½"*).  
Cut 9 (*\*6*) strips 2½" x WOF for binding.  
Cut 25 (*\*10*) squares 3½" x 3½".

## Backing Fabric

7½ yds. (*\*3¼ yds.*) 31605-2 Blue Big Checks, cut into 3 panels 30" x 89" for queen quilt or 2 horizontal  
panels 33" x 56" for crib quilt. Join panels.



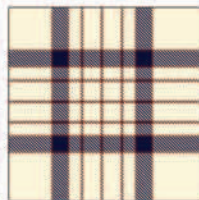
31603-7



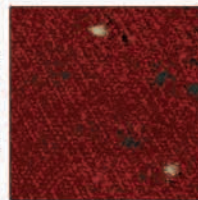
31607-4



31609-6



31610-7



31613-3



31615-4



31615-2

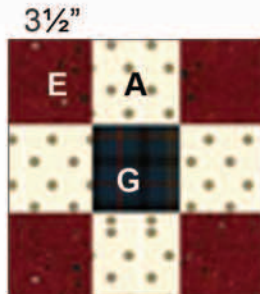
# "THIS & THAT - BASIC ELEMENTS"

Page 3

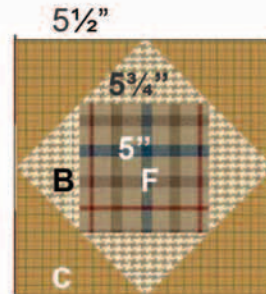
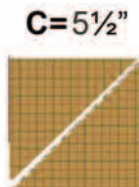
*\*Directions in parentheses ( ) are for the crib quilt.*

## Nine Patch Blocks:

1. Referring to the block diagram, join 4 fabric A, 4 fabric E, and 1 fabric G  $3\frac{1}{2}$ " squares to make a Nine Patch block. Make 25 (\*10) blocks.



**9" Nine Patch Block**  
Make 25 (\*10)



**9" Square in a Square Block**  
Make 24 (\*10)

## Square in a Square Blocks:

2. Referring to the block diagram, center and sew 4 quarter-square fabric B triangles to a fabric F square. Fabric C triangles are cut slightly too large to allow for trimming. Center and sew a fabric C triangle to each side. After pressing, trim the block to  $9\frac{1}{2}$ " if needed. Make 24 (\*10) blocks.

## Quilt Assembly

3. Refer to the quilt photograph. Join the blocks in 7 rows of 7 blocks each (\*5 rows of 4 blocks each). Press seam allowances toward the Nine Patch blocks. Join the rows.

4. Sew fabric G borders to opposite sides of the quilt. Trim even with edges of the quilt if needed. Sew fabric G borders to the top and bottom of the quilt and trim.

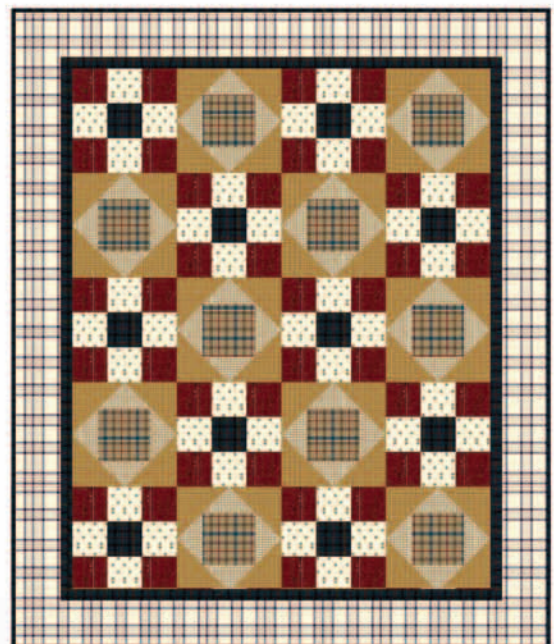
5. Sew fabric D borders to the quilt in the same manner.

## Finishing

6. Layer and baste the backing, batting, and quilt top. Quilt in the ditch around all patches, or quilt  $\frac{1}{4}$ " away from all seams. Quilt a motif of your choice in the Square in a Square center patches.

7. Sew binding strips together end to end. Fold in half lengthwise and press fold line. Align raw edges of binding to raw edges of quilt top. Sew in place. Turn folded edge to back and stitch in place.

**ENJOY!**



(Crib quilt 48" x 57")



Be sure to visit [www.windhamfabrics.com](http://www.windhamfabrics.com) to see the complete collection and to download this and other Free Projects