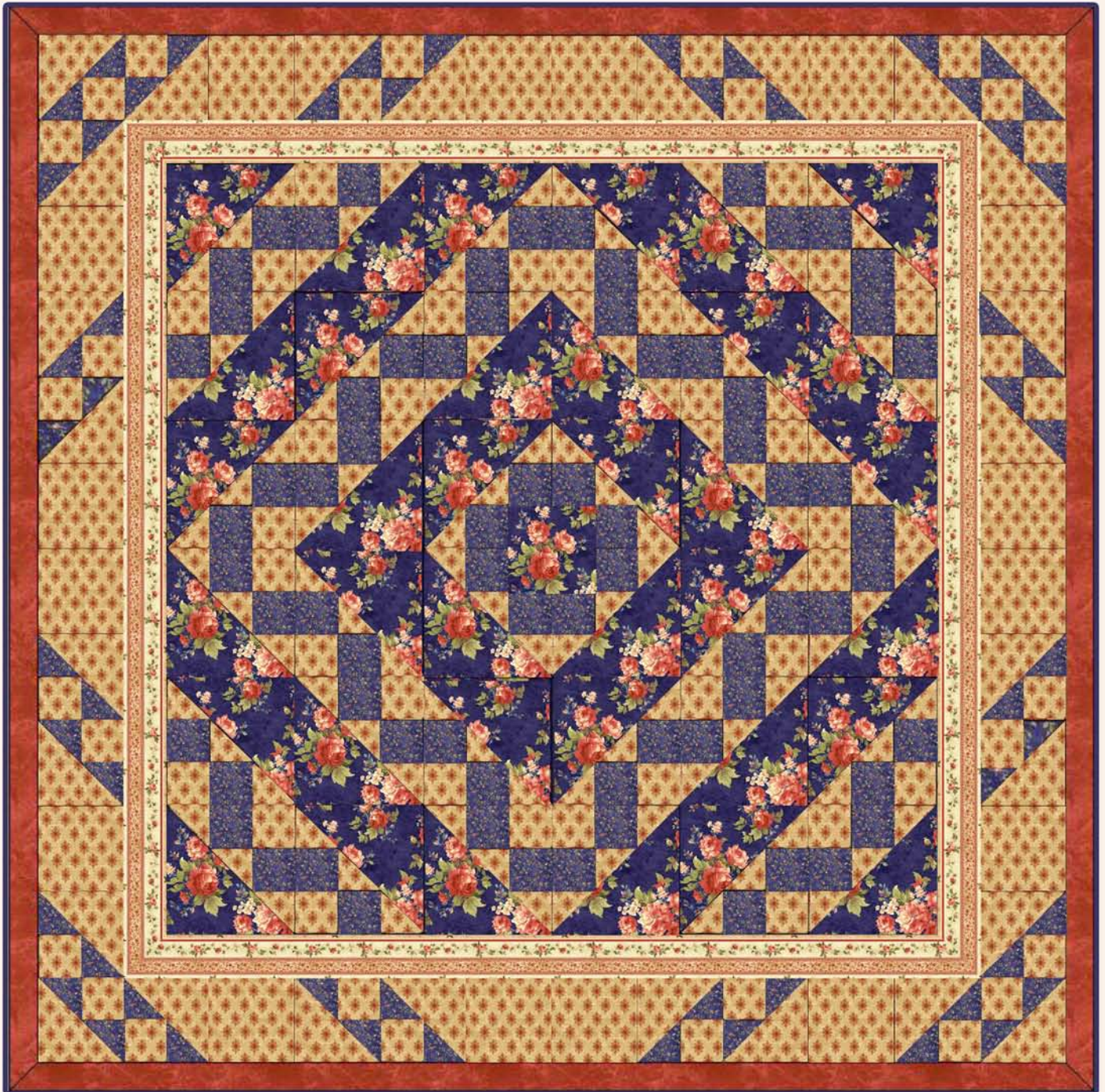


Stella's Walk in the Garden

Designed by George Wheeler of Mulberry Manor Designs

Featuring the Stella Collection by Whistler Studios

Size: 76" x 76"



Feel free to download additional copies of this and other projects by visiting our website: www.windhamfabrics.com

WINDHAM FABRICS

812 Jersey Ave ~ Jersey City, NJ 07310 ~ 201.659.0444 ~ FAX: 201.659.9719
www.windhamfabrics.com email: retail@windhamfabrics.com

Stella's Walk in the Garden

Designed by George Wheeler of Mulberry Manor Designs

Featuring the Stella Collection by Whistler Studios

Size: 76" x 76"



33764-2

33765-2

33766-1

33767-1

33768-2

33769-4

Fabric Requirements

Light Patches	33767-1 Tan	3 yards
Blue Patches	33768-2 Blue	1 1/2 yards
Blue Focus	33764-2 Blue	1 1/2 yards
Inside Border *	33766-1 Tan	2 yards
Backing	33765-2 Blue	4 1/2 yards
Outside Border	33769-4 Red	5/8 yard
Binding	33769-4 Red	5/8 yard

* Based on single strips 3 1/2" X 65"

General Instructions

The quilt starts with traditional nine patch blocks using strip construction. The nine patch blocks are then paired with triangles of the focus fabrics. The diagonal of the nine patch is sewn in two locations netting 9 1/2" and 6 1/2" half square triangles after cutting. The 9 1/2" block will be half nine patch and half focus fabric. The 6 1/2" block will be half four patch and half focus fabric.

My background is science and engineering so I assume accuracy in cutting from you. The main thing I learned when designing this quilt is that pressing the seams open greatly improves the assembly process as the bulk created at junctions is reduced. I learned that many quilters think there is a rule to press seams one way or the other to butt them together, however just as many quilters tell me that there are no rules. To get the best results for this quilt, pressing the seams open is the method that should be used.

Cutting Instructions (assumes 42" usable fabric)

33767-1 Tan	3 1/2" X WOF	16	For nine patch blocks
33767-1 Tan	7" X WOF	3	For tan half square triangles
33767-1 Tan	6 1/2" X WOF	3	For pieced border whole squares
33768-2 Blue	3 1/2" X WOF	13	For nine patch blocks
33764-2 Blue	10" X WOF	5	For large half square triangles
33764-2 Blue	3 1/2" X 3 1/2"	4	Fussy cut from remaining fabric after strips
33766-1 Tan	3 1/2" X 72"	4	These are fussy cut from stripe for inner border
33769-4 Red	2 1/2" X WOF	8	For outer border
33769-4 Red	2 1/2" X WOF	9	For binding

WINDHAM FABRICS



Stella's Walk in the Garden

Page 2

Nine Patch Block Construction

Step 1

Make a 15" strip set by sub cutting one 15" piece from each of 33768-1 Tan and 33796-2 Blue 1/2" strips. Press the seams open and sub cut the set into four 3 1/2" X 6 1/2" units fussy cut four squares 3 1/2" X 3 1/2" of 33764-2 Blue centering a rose in each square. Sew the squares to the two patch units at the end opposite the tan to form four three patch units 3 1/2" X 9 1/2".



Step 2

Make 6 strip sets full WOF using two 3 1/2" strips of 33768-1 Tan and one 3 1/2" strip of 33796-2 Blue. Press the seams open and sub cut the set into sixty-eight 3 1/2" X 9 1/2" units.



Step 3

Make 3 strip sets full WOF using one 3 1/2" strip of 33768-1 Tan and two 3 1/2" strips of 33796-2 Blue. Press the seams open and sub cut the set into thirty-six 3 1/2" X 9 1/2" units.



Step 4

Make the four nine patch blocks that will be used in the center by sewing one unit each from steps 1, 2 and 3 as shown. Press the seams open.



Step 5

Make the thirty-two nine patch blocks that will be used in the quilt by sewing two units from step 2 and one unit from step 3 as shown. Press the seams open.



Stella's Walk in the Garden

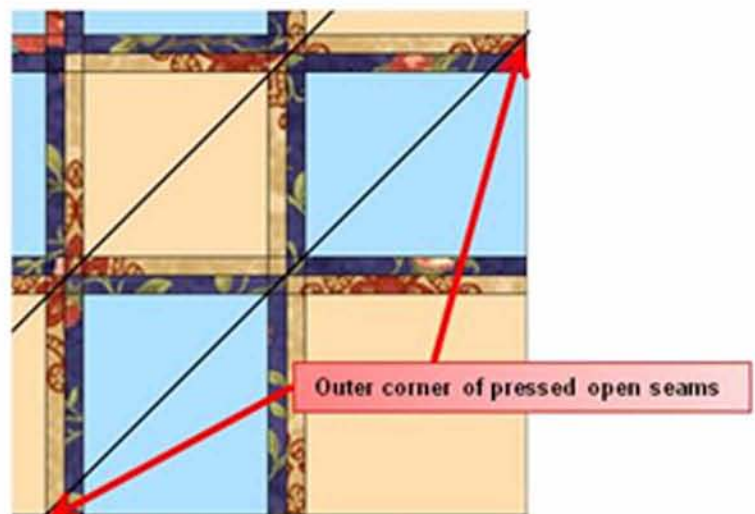
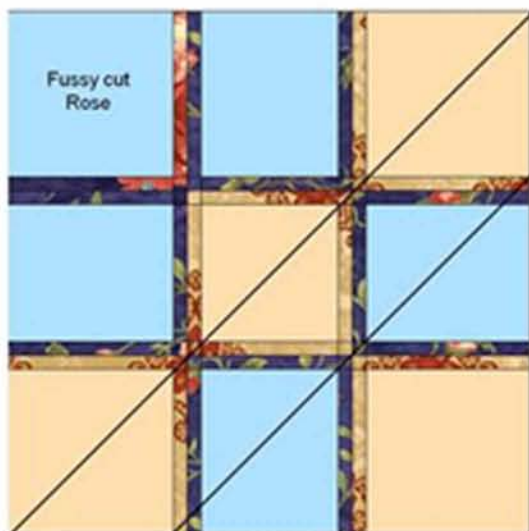
Page 3

Making the Final Blocks

You will be using your nine patches as a base and making two blocks. One will be a 9 1/2" half square triangle with one half being the 33764-2 blue and the other half the nine patch base. The other block will be a 6 1/2" half square triangle with one half being the 33768-1 tan and other half a four patch from the original nine patch.

Step 6

This step creates the sewing lines for the half square triangles. Start with one of the nine patch blocks from Step 4. On the wrong side, with the fussy cut rose patch in the upper left hand corner, mark a diagonal line from the lower left corner to the upper right corner. This line should travel through the two seam intersections. Draw another line from the outer corner of the pressed open seam allowance (1/4") on the lower left square to the pressed open seam allowance (1/4") on the upper right square. See the diagrams below. This line should also travel through the seam intersection. Repeat for the other three Step 4 blocks. These four 9 1/2" blocks will form the center of the quilt.



Step 7

Repeat the marking process for the thirty-two blocks from step 5.

Step 8

Sub cut the 10" strips of the 33764-2 blue into eighteen squares 10" X 10". Cut these eighteen squares in half on the diagonal making thirty five triangles.

Step 9

Sub cut the 7" strips of the 33768-1 Tan into eighteen squares 7" X 7". Cut these eighteen squares in half on the diagonal making thirty-six triangles.



Stella's Walk in the Garden

Page 4

Step 10

Place a triangle from Step 8 under the large triangle side of the nine patch from step 6 RST and align the outside edges.. Sew the long diagonal. Place a triangle from Step 9 RST under the smaller triangle side, align the edges and sew on the diagonal line. Cut the blocks apart using the triangle seams as a guide leaving 1/4" seam allowance. Press the blocks and seams open. See diagram below.

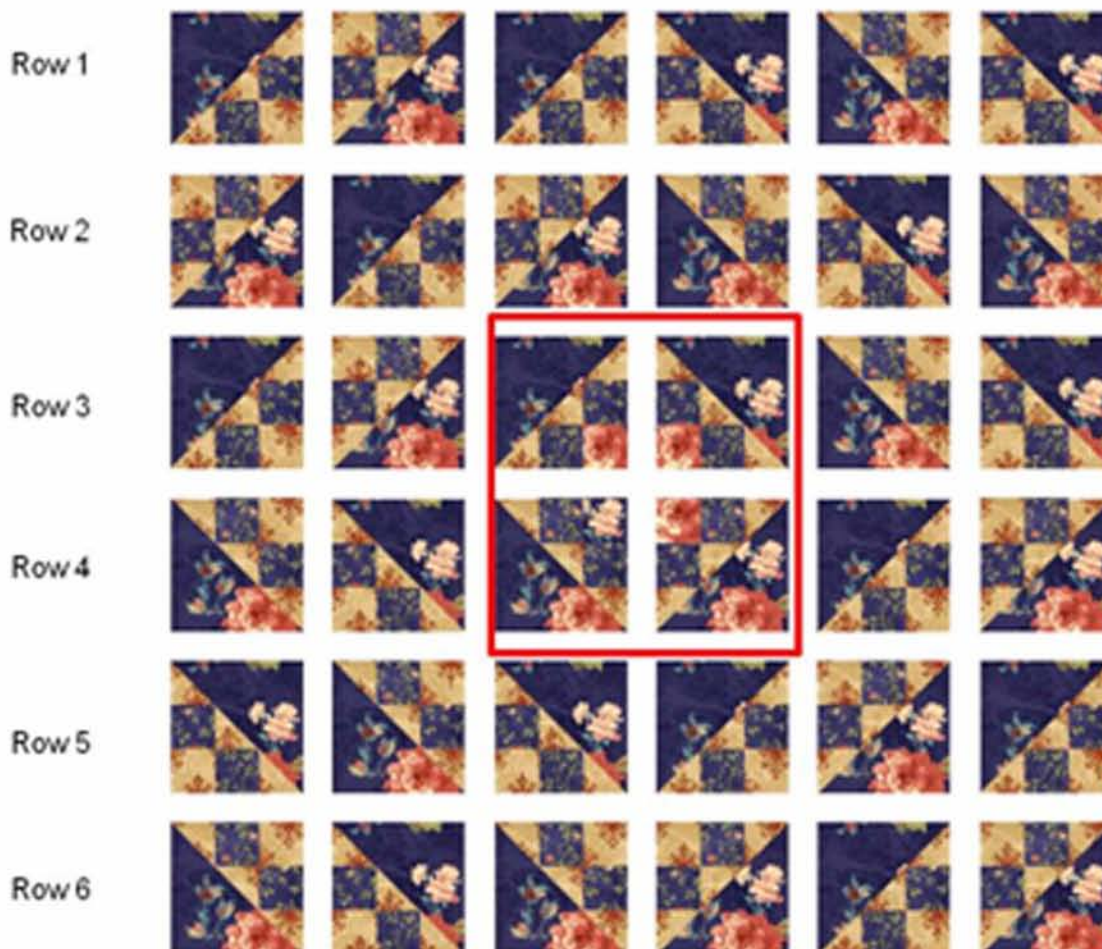


Step 11

Repeat the sewing, cutting and pressing from Step 10 for the thirty-two blocks from step 5.

Assembling the Quilt Body

Assemble the rows as shown below then sew the rows together. Please note the use of the four center blocks made in step 10 are outlined in red in rows 3 and 4. Your quilt should measure 54 1/2" X 54 1/2" at this point.



Stella's Walk in the Garden

Page 5

Inner Border

Find the center of each of the 3 1/2" X 72" inner border strips and the center of each side. Align the centers, pin, and sew all four border strips to the quilt leaving 1/4" at each corner. There will be a 6" tail on each end of the border strip. **Remember to pay attention to the stripe positioning on each border.** Miter each corner using your favorite method. Your quilt should measure 60 1/2" X 60 1/2" at this point.

Pieced Border

The pieced border uses the 6 1/2" half square triangles made earlier and sixteen 6 1/2" X 6 1/2" blocks sub-cut from the 6 1/2" strips cut earlier. Piece the borders with the following block orientation.

Top &
Bottom



Sides



After piecing the borders as shown, attach the top and bottom borders **making sure they are in the right orientation.** Then attach the side borders, **paying attention to orientation.** Your quilt should measure 72 1/2" x 72 1/2" at this point. You will only use twenty-eight of the 6 1/2" blocks, use the other eight for a matching pillow.

Backing / Quilting / Binding

Cut the 4 1/2 yard piece of 33765-2 blue in half making two pieces 88" X WOF. Sew the two pieces together vertically to form your backing (removing selvage). Quilt and bind the quilt using the binding cut earlier.

Congratulations, your quilt is now complete!

Adapted from "Nine Patch Nonsense" ©2010 Mulberry Manor Designs



Always look on our website before starting your project to see if there are any updates or corrections

Be sure to visit www.windhamfabrics.com to see the complete collection and to download this and other Free Projects

WINDHAM FABRICS