

AMERICAN VALOR FABRICS

REVISED

“Stars of Valor”

Designed by Betty New
Featuring the Quilts of Valor Collection by Whistler Studios
Size: 56.5” X 67.5”



WWW.QOVF.ORG/WINGS



WINDHAM FABRICS



812 Jersey Ave ~ Jersey City, NJ 07310 ~ 201.659.0444 ~ FAX: 201.659.9719
www.windhamfabrics.com email: retail@windhamfabrics.com

“Stars of Valor”

Designed by Betty New
 Featuring the Quilts of Valor Collection by Whistler Studios
 Size: 56.5" X 67.5"

“Stars of Valor” Fabric requirements

32299M-2	Red with gold star	1 yard
32301-4	Gold (stripe)	2 yards (includes ½ yard for binding)
32302-1	Blue (stars tone on tone)	1 yard
32302-2	Red (stars tone on tone)	¼ yard
32297-2	Red (Liberty ,Valor, Strength...)	½ yard (allows for fussy cutting)
32303-3	Cream USA	¼ yard
32299M-1	Blue with gold star	¾ yard
32304M-1	Blue with small gold stars	1/3 yard
32296P-X	Multi (Eagle) Panel with 2 eagles and 6 stars	
32302-3	Cream (stars tone on tone)	1 yard
32300-1	Blue (white chevron)	1/3 yard
32304-2	Red (cream with small red star)	1/3 yard

BACKING (horizontal layout) 3 + ½ yards



32299M-2



32301-4



32302-1



32302-2



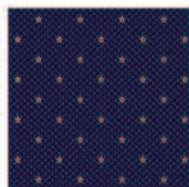
32297-2



32303-3



32299M-1



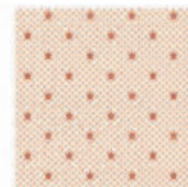
32304M-1



32302-3



32300-1



32304-2



32296P-X



WINDHAM FABRICS



“Stars of Valor”

Page 2

Cutting Instructions

Starch all fabrics with heavy starch before cutting to ensure precise piecing.

- **Red with Gold Stars (32299M-2)**
 - Twenty-four rectangles 2 ½” X 4 ½”
 - Twenty-four squares 2 ½” X 2 ½”
 - Twenty-four squares 3 ¼” X 3 ¼”
 - Eight strips 1 ½” X Width of Fabric
- **Gold Stripe (32301-4)**
 - Ten strips 3 ½” X WOF
- **Blue Stars (32302-1)** (tone on tone)
 - Forty-eight squares 3 ¼” X 3 ¼”
 - Nine rectangles 2 ½” X 8 ½”
 - Two rectangles 2 ½” X 6 ½”
 - Four rectangles 3 ½” X 12 ½”
 - Two rectangles 4” x 17 ½”
 - Two rectangles 4” x 11 ½”
- **Red Stars (32302-2)** (tone on tone)
 - Eight rectangles 2 ½” X 4 ½”
 - Eight squares 2 ½” X 2 ½”
- **Red (32297-2)** (Liberty, Valor, Strength...)
 - Eight squares 4 ½” X 4 ½” (Fussy cut)
- **Cream USA (32303-3)**
 - Six squares 4 ½” X 4 ½”
- **Blue with Gold Stars (32299-1)**
 - Four strips 3 ½” X WOF
 - Four squares 3 ½” X 3 ½”
- **Blue with Small Gold Stars (32304M-1)**
 - Four squares 4” x 4”
 - Four rectangles 2 ½” X 8 ½”
 - Four rectangles 2 ½” X 12 ½”
- **Eagle Panel with Stars (32296-X)**
 - One eagle panel 11 ½” x 17 ½”
 - Four gold stars (Fussy cut)
- **Cream Stars (32302-3)** (tone on tone)
 - Twenty-four rectangles 2 ½” X 4 ½”
 - Eighty-eight squares 2 ½” X 2 ½”
- **Blue with White Chevron**
 - Forty-eight squares 2 ½” X 2 ½”
- **Red/Cream (cream with small red star)**
 - Twelve squares 2 ½” X 2 ½”
 - Twenty-four squares 3 ¼” X 3 ¼”



“Stars of Valor”

Page 3

Sewing Instructions

All seams are $\frac{1}{4}$ inch.



Flying Geese units will be made using one rectangle $2\frac{1}{2}$ " X $4\frac{1}{2}$ " and two squares $2\frac{1}{2}$ " X $2\frac{1}{2}$ ". Draw a diagonal line on the back of the squares. Place one square on the rectangle with right sides together, match corners, and sew on the diagonal line. Sew from the center of the rectangle to the corner. Pull all corners together, press, and trim underneath to $\frac{1}{4}$ ". Attach the second square in the same manner.

Half Square Triangle units will be made using two squares $3\frac{1}{4}$ " X $3\frac{1}{4}$ ". Draw a diagonal line on the back of one of the fabrics. With right sides together sew $\frac{1}{4}$ " away from both sides of the line. Cut on the diagonal line. Press seams open. Trim down to exactly $2\frac{1}{2}$ ".

Sawtooth Stars



Block A. Make two.



Block B. Make six.



Block C. Make Six.

CONSTRUCTION: Each block consists of one $4\frac{1}{2}$ " X $4\frac{1}{2}$ " square, four flying geese units, and four $2\frac{1}{2}$ " X $2\frac{1}{2}$ " squares. Assemble the top and bottom rows and press away from the flying geese. Assemble the middle row and press toward the center. Connect all three rows and press. The block should now measure exactly $8\frac{1}{2}$ " X $8\frac{1}{2}$ ".

Block A Fabrics:

Red “Liberty”-one square fussy cut at $4\frac{1}{2}$ " X $4\frac{1}{2}$ "

Red Stars (tone on tone)-four rectangles $2\frac{1}{2}$ " X $4\frac{1}{2}$ " and four squares $2\frac{1}{2}$ " X $2\frac{1}{2}$ "

Cream Stars (tone on tone)-eight squares $2\frac{1}{2}$ " X $2\frac{1}{2}$ "

Block B Fabrics:

Cream USA-one square $4\frac{1}{2}$ " X $4\frac{1}{2}$ "

Cream Stars (tone on tone)-four rectangles $2\frac{1}{2}$ " X $4\frac{1}{2}$ " and four squares $2\frac{1}{2}$ " X $2\frac{1}{2}$ "

Blue/White Chevron-eight squares $2\frac{1}{2}$ " X $2\frac{1}{2}$ "

Block C Fabrics:

Red “Liberty”-one square fussy cut at $4\frac{1}{2}$ " X $4\frac{1}{2}$ "

Red/Gold Stars-four rectangles $2\frac{1}{2}$ " X $4\frac{1}{2}$ " and four squares $2\frac{1}{2}$ " X $2\frac{1}{2}$ "

Cream Stars (tone on tone)-eight squares $2\frac{1}{2}$ " X $2\frac{1}{2}$ "



WINDHAM FABRICS



“Stars of Valor”

Page 4

Friendship Stars



Make twelve.



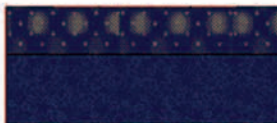
Construction: Each block consists of one $2\frac{1}{2}''$ X $2\frac{1}{2}''$ square and eight half square triangle units. (instructions page 3) Assemble the top and bottom rows and press toward the corner units. Assemble the center row and press toward the center square. Connect the three rows and press. The block should now measure exactly $6\frac{1}{2}''$ X $6\frac{1}{2}''$.

Center Square Fabric: Red/Cream with small red star- $2\frac{1}{2}''$ X $2\frac{1}{2}''$.

Star Points Fabrics: Red/Cream with small red star and Blue Stars (tone on tone)-two red/cream and two blue $3\frac{1}{4}''$ X $3\frac{1}{4}''$ squares will yield four half-square triangle units.

Corner Square Fabrics: Red with gold stars and Blue Stars (tone on tone)-two red/gold and two blue $3\frac{1}{4}''$ X $3\frac{1}{4}''$ squares will yield four half-square triangle units.

Top Section



Part A



Part B



Part C

Construction

Parts A and C: Using blue/small gold star fabric, attach $2\frac{1}{2}''$ X $8\frac{1}{2}''$ rectangles to the left and right sides of the Sawtooth Star blocks. Press toward the blue fabric. Combine a blue/gold $2\frac{1}{2}''$ X $12\frac{1}{2}''$ rectangle with a blue (tone on tone) $3\frac{1}{2}''$ X $12\frac{1}{2}''$ rectangle. Attach to the top of the Sawtooth Star. Repeat for the bottom. Press toward the blue fabric. The panel should measure $12\frac{1}{2}''$ X $18\frac{1}{2}''$.

Part B: Using blue tone on tone fabric attach $4''$ x $11\frac{1}{2}''$ rectangles to the left and right sides of the Eagle panel. Press toward the blue fabric. Combine a blue tone on tone $4''$ x $17\frac{1}{2}''$ rectangle with two blue/gold star fabric $4''$ x $4''$ squares. Press toward the squares. Attach to the top of the Eagle. Repeat for the bottom. GOLD STARS are fused in place using a lightweight fusible on the back. Fussy cut around each star and press in place. Secure with matching or invisible threads.

Connect Parts A, B, and C. Press seams. This section should measure $48\frac{1}{2}''$ X $18\frac{1}{2}''$.

*The seams for Parts A/C are offset from Part B by approximately one-fourth inch near the squares.



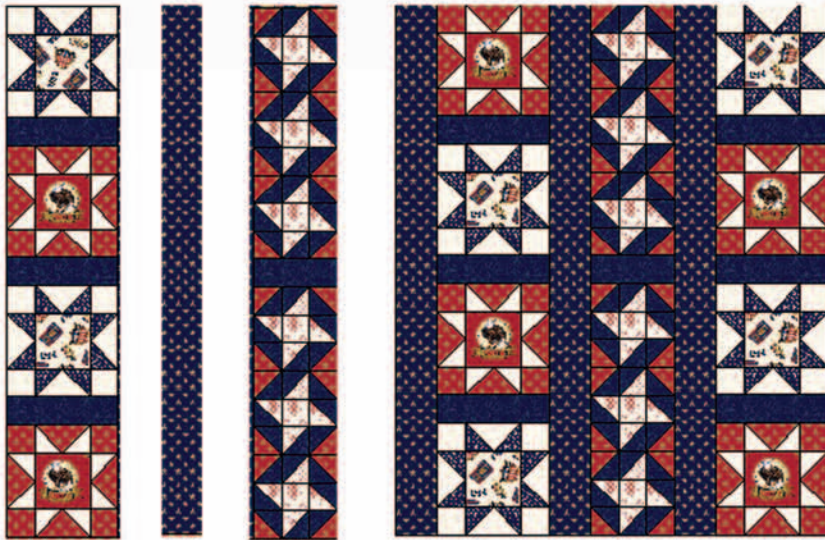
WINDHAM FABRICS



“Stars of Valor”

Page 5

Bottom Section



Connect four Sawtooth Star blocks vertically using blue tone on tone 2 1/2" X 8 1/2" rectangles as shown in the diagram. Press seams toward the blue. Make three groups.

Connect groups of three Friendship Star blocks. Combine two groups of three with a blue tone on tone 2 1/2" X 6 1/2" rectangle. Press toward the blue fabric.

Connect the vertical rows of stars with strips of blue/gold stars 3 1/2" X 38 1/2" strips. This section should measure 38 1/2" X 48 1/2".

Sew two gold stripe strips 3 1/2" X WOF together and trim to 48 1/2". Attach to the top of the section. Press toward the stripes.

Adding Borders:

• Red Border

Make four red borders by joining the 1 1/2" X WOF strips by two's. A bias seam to join them looks best.

Lay two red strips vertically down the center body of the quilt and trim for correct width. Mark centers of the strips. Attach one strip to the left and one to the right of the quilt carefully matching centers of the strips to the center of the quilt. Press all seams toward the outside edge. Repeat the process horizontally.

• Gold Stripe Border

Make four striped borders by joining the 3 1/2" X WOF strips by twos. Use a straight seam to join them using the stripes as a guide.

Lay two strips horizontally across the quilt and trim to correct width. Attach one to the top and one to the bottom matching the center of the strip to the center of the quilt. Press toward the striped fabric.

Lay two strips vertically on the quilt and trim to correct length. Attach a blue/gold star 3 1/2" X 3 1/2" square to each end of the strip. Connect to the left and right sides of the quilt matching the center of the strips to the center of the quilt. Press toward the striped fabric.

Horizontal Backing: Cut the 3 1/2 yard piece you chose for backing into two 1 3/4 yard pieces. Starch and press each piece. Remove the selvedge and join the pieces together along what was the selvedge edge. Press the seam open. Layer the backing, batting, and quilt top and secure with pins or basting spray.

Binding and Quilting: The remaining gold stripe fabric is for binding. Use your favorite methods for attaching binding and for quilting.

To learn more about Quilts of Valor Foundation
and the Under our Wings Program
visit: www.QOVF.org/wings

Be sure to visit www.windhamfabrics.com to see the complete collection
and to download this and other Free Projects



WINDHAM FABRICS



www.QOVF.org/wings