

# “School Days”

Designed by LB Krueger

Featuring the Homeschool Collection by LB Krueger

Size: 55" x 62.5"



Check [www.windhamfabrics.com](http://www.windhamfabrics.com) Free Project section to see if there are any pattern updates before you start your quilt

**WINDHAM** *W* **FABRICS**

812 Jersey Ave ~ Jersey City, NJ 07310 ~ 201.659.0444 ~ FAX: 201.659.9719  
[www.windhamfabrics.com](http://www.windhamfabrics.com) email: [retail@windhamfabrics.com](mailto:retail@windhamfabrics.com)



# “School Days”

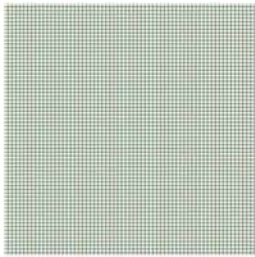
Designed by LB Krueger

Featuring the Homeschool Collection by LB Krueger

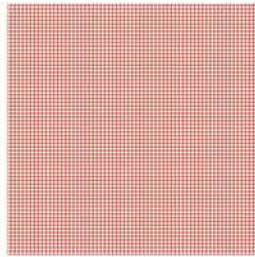
Size: 55" x 62.5"



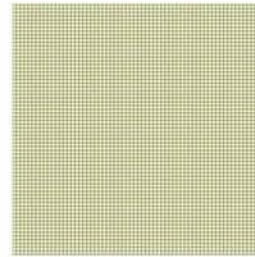
35176-2



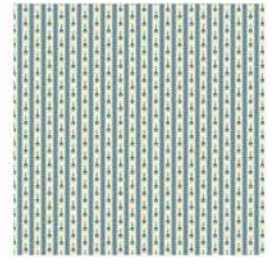
35177-2



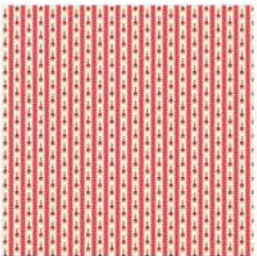
35177-3



35177-4



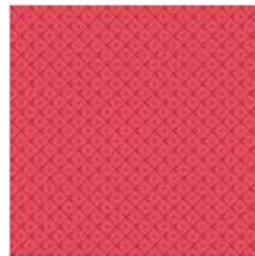
35178-2



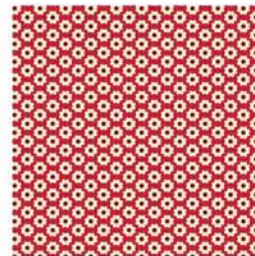
35178-3



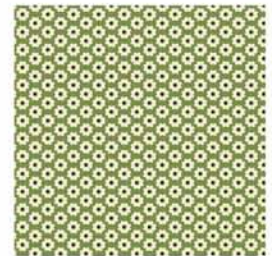
35179-2



35179-3



35180-3



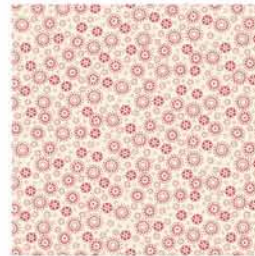
35180-4



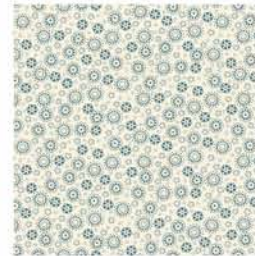
35181-2



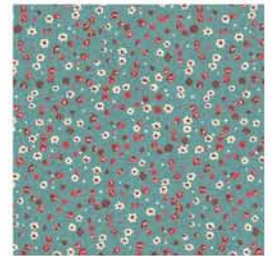
35181-3



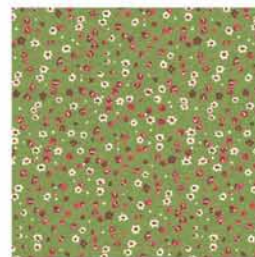
35182-3



35182-2



35183-2



35183-4



35174-X

## Fabric Requirements:

35174-X Multi = 1 panel or enough to spell a name of your choice

35176-2 Blue = 5/8 yard + 1/2 yard for binding

35181-2 Blue, 35181-3 Red, 35179-3 Red, 35180-3 Red = 1/3 yard

1/4 yard each

35177-2 Blue, 35177-3 Red, 35177-4 Green, 35178-2 Blue, 35178-3 Red, 35179-2 Blue

35180-4 Green, 35182-2 Blue, 35182-3 Red, 35183-2 Blue, 35183-4 Green

# “School Days”

Page 2

## Cutting Instructions:

1. For each of the (6) Houses cut the following:

House:

Cut (3) 2" x 3 1/2" Dark  
Cut (1) 2" Square Dark

Window:

Cut (1) 2" square Medium

Roof:

Cut (1) 2" x 8" Dark  
Cut (2) 2" square Light

Chimney:

Cut (2) 2" Square Red

Door:

Cut (1) 2" x 3 1/2" Medium

Background:

Cut (3) 2" Square Light

Sky:

Cut (1) 2" x 8" Light

2. For each of the (6) Little Girls cut the following:

Dress:

Cut (2) 3" X 3" Dark  
Cut (1) 3 3/8" x 3 3/8" Dark  
Cut (1) 3 3/8" x 3 3/8" Light

Head and Background:

Cut (1) 3" X 3" Dark  
Cut (2) 3" x 3" Light  
Cut (4) 1 1/4" x 1 1/4" Light

Arms:

Cut (2) 3" x 2" Light  
Cut (2) 3" x 1 1/2" Dark

3. Blocks:

Cut (26) assorted 8" x 8" blocks  
Cut (1) 30 1/2" x 8" rectangle (for name)

4. Name:

Cut the amount of letters required to make the name of your choice for applique.

5. Inner Border:

Cut (5) 2" x WOF and join as necessary to make lengths 52 1/2" for sides and 48" for top and bottom of border.

6. Outer Border:

Cut (5) 4" x WOF and join as necessary to make lengths 55 1/2" for sides and 55" for top and bottom of border.



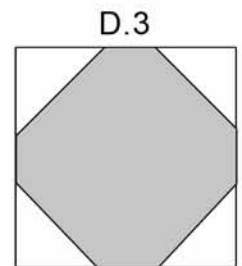
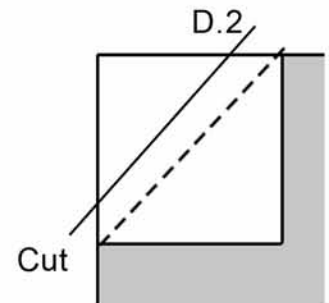
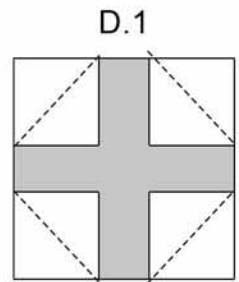
# “School Days”

Page 3

## Assembly Little Girls:

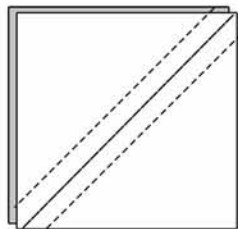
### Head:

1. Take Dark 3" x 3" piece. Lay (4) 1 1/4" x 1 1/4" squares on each corner of the 3" x 3" square. D.1
2. On each small square sew a diagonal from corner to corner.
3. Cut off point leaving a 1/4" seam allowance. D.2  
Press corners open. D.3
4. Sew head block D.3 to a 3" square light on each side.

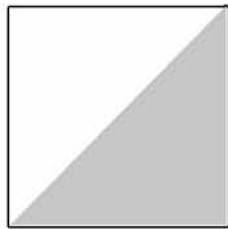


### Skirt:

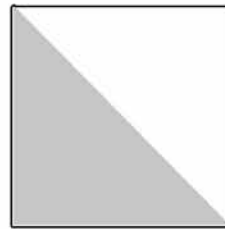
5. For 2 skirt ends sew dark 3 3/8" x 3 3/8" square to a light 3 3/8" x 3 3/8" square.
6. Draw a line on the diagonal and sew 1/4" on each side of it. D.4



D.4



D.5



7. Cut on drawn line. Press open. You have each side of the dress. D.5  
Attach to each side of a dark 3" x 3" square.

### Arms:

8. Sew one light 3" x 2" to one dark 3" x 1 1/2". Press Open.  
Repeat for the other arm.
7. Join each section together following the quilt picture. Block should measure 8" x 8".  
Repeat all above for each of the additional 5 little girls.



## Assembly of Houses:

### Windows:

1. Sew window 2" x 2" square to house 2"x 2" square. Press open.

### House:

2. Assemble body of house according to picture. House 2"x3 1/2" piece to door 2"x 3 1/2". Next join to house 2"x 3 1/2" piece to window and house piece from Step one. Then attach to last house 2"x 3 1/2" piece. Press open.

### Roof:

3. To assemble roof, sew 2" squares diagonally to outside edge of roof piece trim to 1/4" seam allowance. (same as D.2 above)

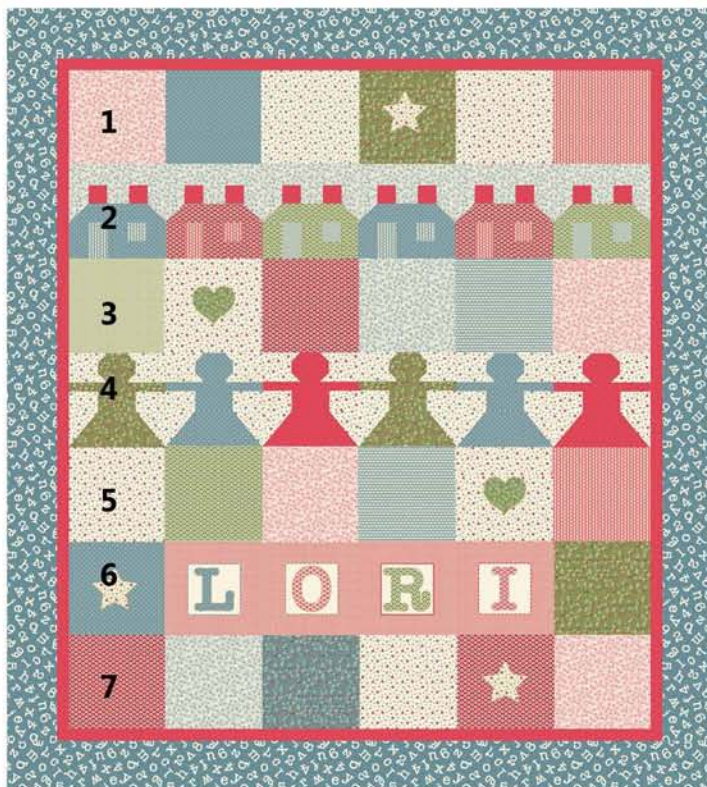
# “School Days”

Page 4

- Sew all the rows together: Add Sky 2" x 8" piece to chimney row to roof row to body of house  
Block should measure 8" x 8".  
Repeat all above for each of the additional 5 houses.

## Quilt Assembly:

- Following the quilt picture create 5 rows by joining the 8" blocks together in rows of 6 assorted blocks alternating with the houses and little girls.
- For the 6th row applique block letters to form a name on the 30 1/2" rectangle using your applique method of choice. Join the rectangle with an 8" square on each end.
- Add 7th row of 6 assorted blocks.  
Applique hearts and stars cut from the letter panel randomly on blocks as pictured.
- Add the inner border on each side then to top and bottom. Add the outer borders to each side then to top and bottom.
- Quilt and bind. **Enjoy!**



Be sure to visit [www.windhamfabrics.com](http://www.windhamfabrics.com) to see the complete collection and to download other Free Projects