

INSTRUCTIONS

1 Large Stars

For each star, sew (8) matching fussy cut diamonds together to form the star center.

Sew (1) fussy cut red swirl triangle to (1) beige triangle (Template C) make a half square triangle unit. Press and trim to 9 7/8" X 9 7/8".

Referring to Diagram 4, sew the half square triangle unit to one corner of the star. Sew (3) beige print A's and (4) Beige print B's to star center.

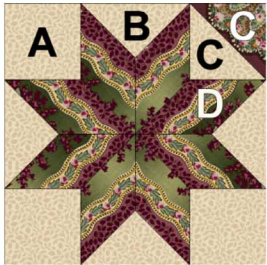


Diagram 4

Repeat to make (4) large stars.

2 Pieced Border

Referring to Diagram 5, sew red print, beige floral, green tone on tone and red and green stripe triangles and squares together to make (4) border units. Sew (1) border unit to the top and (1) to the bottom of the quilt.



Diagram 5

Sew (1) red print Template F triangle to (1) beige floral template F triangle to form a half square triangle unit. Trim to 8 1/2" x 8 1/2". Sew (1) half square triangle unit to each end of (1) border unit. Sew (1) of these border strips to each side of quilt.

FINISHING:

Layer. Quilt and bind as desired.

ENJOY!!

Kit available for top and binding: \$93.00

Backing: Fabric #30589-1 \$54.00

Reproduction Quilts www.reproductionquilts.com 859-333-6232

Be sure to visit www.windhamfabrics.com to see the complete collection and to download this and other Free Projects

Designed by Karen Witt

Featuring fabric from the Sally Rose Collection by Eileen Jahnke Trestain



Sally Rose's Quilt

Designed by Karen Witt

Featuring fabric from the Sally Rose Collection by Eileen Jahnke Trestain

Size: 80" X 80"

Skill Level: Intermediate

Block Size: 32" finished

Many quilts designed in the mid 1800's feature a large four-block design. To add a 21st century element, the four blocks form a secondary design in the center and are surrounded by a pieced border.

FABRIC REQUIREMENTS

2 1/2 yards #30584-4 Beige print-- block piecing
3 yards #30590-1 Large red paisley print -- block piecing.

*Sew a remaining strip along a side edge of backing, fabric, as was done in the 1800's.

1/4 yard #30588-3 Large red swirl print -- block piecing
1 1/8 yards #30583-1 Red print -- border piecing, binding
3/8 yard #30589-4 Beige floral -- border piecing
3/8 yard #30584-3 Green tone on tone -- border piecing
1 1/2 yard #30586-1 Red and green stripe -- border piecing



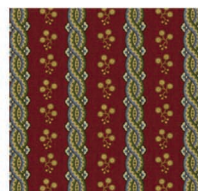
30590-1 Red-Green



30583-1 Red



30588-3 Green



30586-1 Red



30589-4 Cream



30584-4 Cream



30584-3 Green

CUTTING DIRECTIONS

#30584-4 Beige print

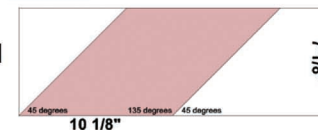
Cut (12) 9 7/8" X 9 7/8" squares for Template A in the large star blocks
Cut (4) 14 5/8" X 14 5/8" squares. Cut each square twice diagonally to make (16) triangles for Template B in the large star blocks.

Cut (2) 10 1/4" X 10 1/4" squares. Cut each square once diagonally to make (4) triangles for Template C in the large star blocks.

#30590-1 Large red paisley print

For each block, refer to Diagram 1 and use an acrylic ruler with 45 degree angle markings to FUSSY CUT (8) diamonds, each 7 1/8" high and 10 1/8" wide, for Template D in the large star blocks.

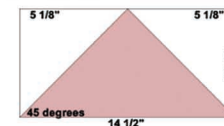
Diagram 1



#30588-3 Large red swirl print

Referring to Diagram 2, FUSSY CUT (4) triangles for Template C in the large star blocks. Handle carefully as two short sides will be on bias.

Diagram 2



#30583-1 Red print

Cut (12) 6 1/4" X 6 1/4" squares for Template E in pieced border.
Cut (2) 9" X 9" squares. Cut each square once diagonally to make (4) triangles for Template F in pieced border.
Cut (2) 9 1/4" X 9 1/4" squares. Cut each square twice diagonally to make (8) triangles for Template G in pieced border.
Cut (8) 2 1/2" strips across width of fabric for binding. Piece, as necessary.

#30589-4 Beige floral

Cut (6) 9 1/4" X 9 1/4" squares. Cut each square twice diagonally to make (24) triangles for Template H in pieced border.

#30584-3 Green tone on tone

Cut (2) 9" X 9" squares. Cut each square once diagonally to make (4) triangles for Template F in pieced border.
Cut (2) 9 1/4" X 9 1/4" squares. Cut each square twice diagonally to make (8) triangles for Template H in pieced border.

#30586-1 Red and green stripe

Referring to Diagram 3, FUSSY CUT (16) triangles for Temple I in pieced border.

Diagram 3

