

# QUEEN'S LAKE

Designed by Jocelyn of It's Sew Emma  
Featuring the Hennessy Collection by Williamsburg  
Finished Quilt Size: 71 1/2" x 94"






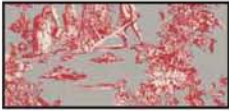












Check [www.windhamfabrics.com](http://www.windhamfabrics.com) Free Project section to see if there are any pattern updates before you start your quilt project

**WINDHAM FABRICS**

812 Jersey Ave ~ Jersey City, NJ 07310 ~ 201.659.0444 ~ FAX: 201.659.9719  
[www.windhamfabrics.com](http://www.windhamfabrics.com) email: [retail@windhamfabrics.com](mailto:retail@windhamfabrics.com)

# QUEEN'S LAKE

Designed by Jocelyn of It's Sew Emma  
 Featuring the Hennessy Collection by Williamsburg  
 Finished Quilt Size: 71 1/2" x 94"

Blue Quilt	Red Quilt	Yardage	Description	Quantity & Size		
25029 	25029 	3 1/4 yards	Background and Sashing	A	132	2 7/8" squares
		B		48	4 3/8" squares	
		C		48	2 1/2" x 14 1/2" rectangles	
37153-2 	37153-1 	3/4 yard	Queen Blocks	D	6	10 7/8" squares
37154-3 	37154-1 	3/4 yard	Queen Blocks	E	6	10 7/8" squares
37155-3 	37155-4 	3 3/8 yards	Queen Blocks and Setting Triangles	F	66	2 7/8" squares
		G		2	13 5/8" squares	
		H		3	26 3/4" squares	
37158-2 	37156-4 	5/8 yard	Queen Blocks	I	66	2 7/8" squares
37156-3 	37156-5 	1 1/4 yards	Pinwheel Blocks and Binding	J	24	4 3/8" squares
		K		10	2 1/2" x WOF strips	
37159-2 	37158-4 	7/8 yard	Pinwheel Blocks and Cornerstones	L	24	4 3/8" squares
		M		55	2 1/2" squares	
37160-2 	37160-1 	5 7/8 yards	Backing			

# QUEEN'S LAKE

Page 2

Use ¼" seams and press as arrows indicate throughout.

## Queen Blocks:

Draw a diagonal line on the wrong side of the Fabric D squares.

With right sides facing, layer a Fabric D square with a Fabric E square.

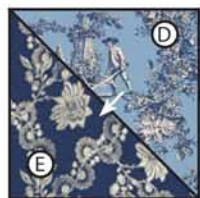
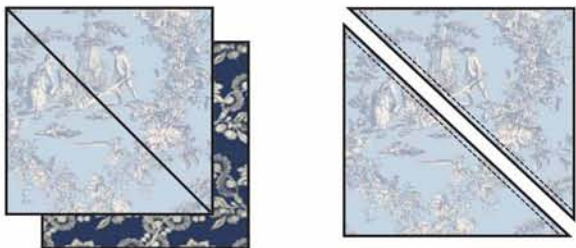
Stitch ¼" from each side of the drawn line.

Cut apart on the marked line.

Fabric D/E Half Square Triangle Unit should measure 10 ½" x 10 ½".

Repeat five more times.

Make 12.



Make 12.

Draw a diagonal line on the wrong side of the Fabric A squares.

With right sides facing, layer a Fabric A square with a Fabric F square.

Stitch ¼" from each side of the drawn line.

Cut apart on the marked line.

Fabric A/F Half Square Triangle Unit should measure 2 ½" x 2 ½".

Repeat 65 more times.

Make 132.



With right sides facing, layer a Fabric A square with a Fabric I square.

Stitch ¼" from each side of the drawn line.

Cut apart on the marked line.

Fabric A/I Half Square Triangle Unit should measure 2 ½" x 2 ½".

Repeat 65 more times.

Make 132.



Assemble five Fabric A/F Half Square Triangle Units as shown.

Fabric A/F Half Square Triangle Strip should measure 2 ½" x 10 ½".

Repeat 11 more times.

Make 12.



Make 12.

Assemble five Fabric A/I Half Square Triangle Units as shown.

Fabric A/I Half Square Triangle Strip should measure 2 ½" x 10 ½".

Repeat 11 more times.

Make 12.



Make 12.

Assemble six Fabric A/F Half Square Triangle Units and one Fabric M square as shown.

Fabric A/F/M Half Square Triangle Strip should measure 2 ½" x 14 ½".

Repeat 11 more times.

Make 12.



Make 12.

# QUEEN'S LAKE

Page 3

Assemble one Fabric M square and six Fabric A/I Half Square Triangle Units and as shown.

Fabric A/I/M Half Square Triangle Strip should measure  $2\frac{1}{2}'' \times 14\frac{1}{2}''$ .

Repeat 11 more times.

Make 12.



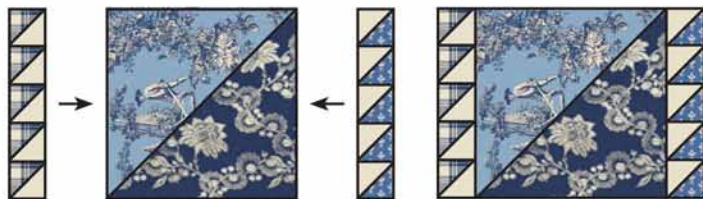
Make 12.

Assemble one Fabric A/F Half Square Triangle Strip, one Fabric D/E Half Square Triangle Unit and one Fabric A/I Half Square Triangle Strip as shown.

Unit should measure  $10\frac{1}{2}'' \times 14\frac{1}{2}''$ .

Repeat 11 more times.

Make 12.



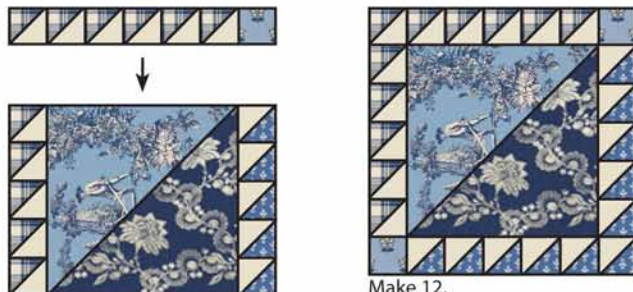
Make 12.

Assemble one Fabric A/F/M Half Square Triangle Strip, one unit from the previous step and one Fabric A/I/M Half Square Triangle Strip as shown.

Queen Block should measure  $14\frac{1}{2}'' \times 14\frac{1}{2}''$ .

Repeat 11 more times.

Make 12.



Make 12.

## Pinwheel Blocks:

Draw a diagonal line on the wrong side of the Fabric B squares.

With right sides facing, layer a Fabric B square with a Fabric L square.

Stitch  $\frac{1}{4}''$  from each side of the drawn line.

Cut apart on the marked line.

Fabric B/L Half Square Triangle Unit should measure  $4'' \times 4''$ .

Repeat 23 more times.

Make 48.



Make 48.

With right sides facing, layer a Fabric B square with a Fabric J square.

Stitch  $\frac{1}{4}''$  from each side of the drawn line.

Cut apart on the marked line.

Fabric B/J Half Square Triangle Unit should measure  $4'' \times 4''$ .

Repeat 23 more times.

Make 48.



Make 48.

Assemble two Fabric B/L Half Square Triangle Units as shown.

Fabric B/L Half Pinwheel Unit should measure  $4'' \times 7\frac{1}{2}''$ .

Repeat 23 more times.

Make 24.

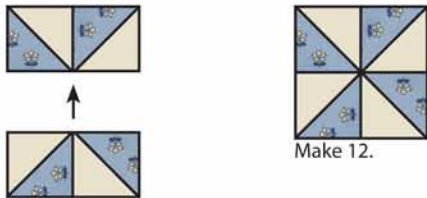


Make 24.

# QUEEN'S LAKE

Page 4

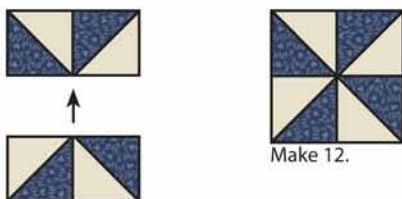
Assemble two Fabric B/L Half Pinwheel Units as shown.  
Fabric B/L Pinwheel Unit should measure  $7\frac{1}{2}'' \times 7\frac{1}{2}''$ .  
Repeat 11 more times.  
Make 12.



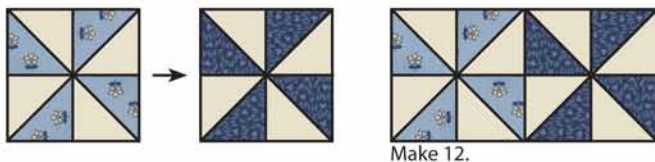
Assemble two Fabric B/J Half Square Triangle Units as shown.  
Fabric B/J Half Pinwheel Unit should measure  $4'' \times 7\frac{1}{2}''$ .  
Repeat 23 more times.  
Make 24.



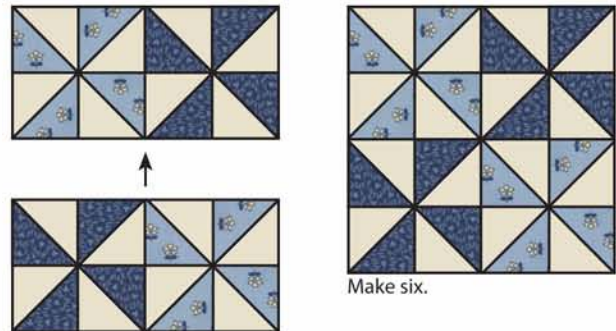
Assemble two Fabric B/J Half Pinwheel Units as shown.  
Fabric B/J Pinwheel Unit should measure  $7\frac{1}{2}'' \times 7\frac{1}{2}''$ .  
Repeat 11 more times.  
Make 12.



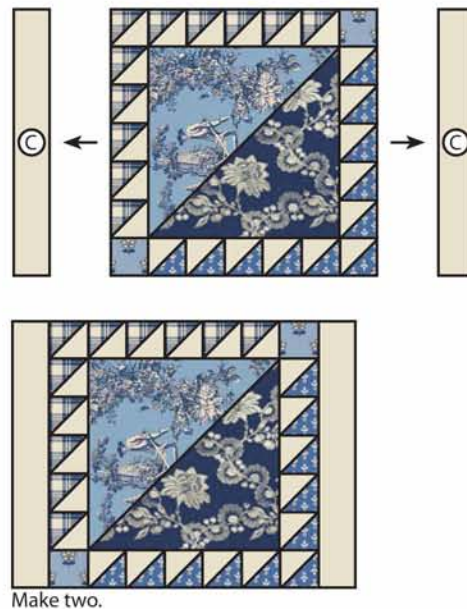
Assemble one Fabric B/L Pinwheel Unit and one Fabric B/J Pinwheel Unit as shown.  
Unit should measure  $7\frac{1}{2}'' \times 14\frac{1}{2}''$ .  
Repeat 11 more times.  
Make 12.



Assemble Pinwheel Block as shown.  
Unit should measure  $14\frac{1}{2}'' \times 14\frac{1}{2}''$ .  
Repeat five more times.  
Make six.



Assemble two Fabric C rectangles and one Queen Block as shown.  
Row One should measure  $14\frac{1}{2}'' \times 18\frac{1}{2}''$ .  
Repeat one more time.  
Make two.



# QUEEN'S LAKE

Page 5

Assemble four Fabric C rectangles, two Queen Blocks and one Pinwheel Block as shown.

Row Two should measure 14 1/2" x 50 1/2".

Repeat one more time.

Make two.



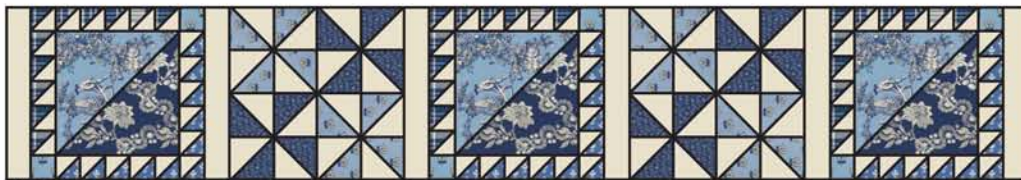
Make two.

Assemble six Fabric C rectangles, three Queen Blocks and two Pinwheel Blocks as shown.

Row Three should measure 14 1/2" x 82 1/2".

Repeat one more time.

Make two.



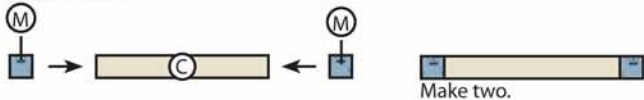
Make two.

Assemble two Fabric M squares and one Fabric C rectangle as shown.

One-Strip Sashing Unit should measure 2 1/2" x 18 1/2".

Repeat one more time.

Make two.



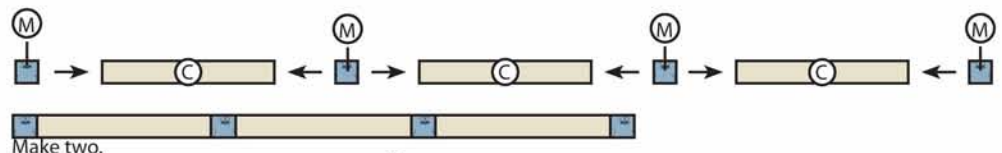
Make two.

Assemble four Fabric M squares and three Fabric C rectangles as shown.

Three-Strip Sashing Unit should measure 2 1/2" x 50 1/2".

Repeat one more time.

Make two.



Make two.

# QUEEN'S LAKE

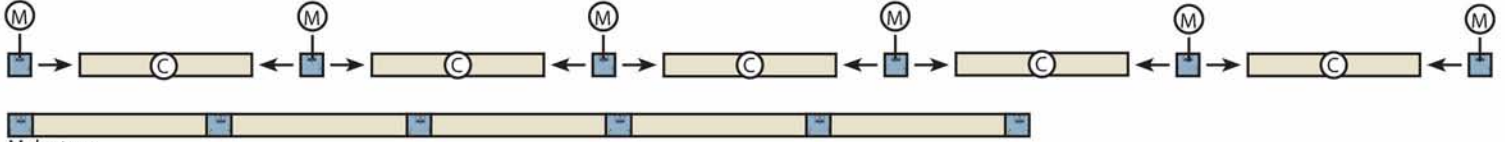
Page 6

Assemble six Fabric M squares and five Fabric C rectangles as shown.

Five-Strip Sashing Unit should measure  $2\frac{1}{2}'' \times 82\frac{1}{2}''$ .

Repeat one more time.

Make two.

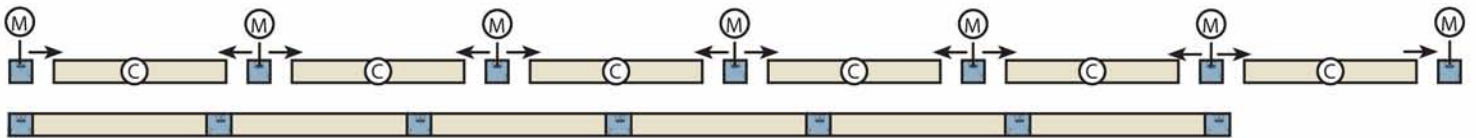


Make two.

Assemble seven Fabric M squares and six Fabric C rectangles as shown.

Six-Strip Sashing Unit should measure  $2\frac{1}{2}'' \times 98\frac{1}{2}''$ .

Make one.



Make one.

Cut the Fabric G squares on the diagonal once



Make four.

Cut the Fabric H squares on the diagonal twice.



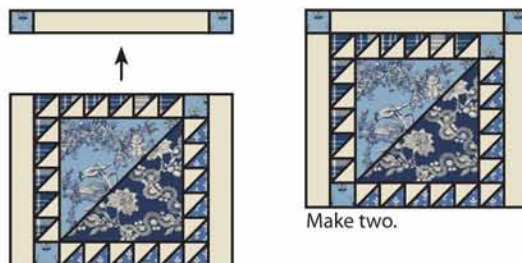
Make twelve.

Assemble one One-Strip Sashing Unit and one Row One as shown.

Repeat one more time.

Row One Unit should measure  $16\frac{1}{2}'' \times 18\frac{1}{2}''$ .

Make two.



Make two.

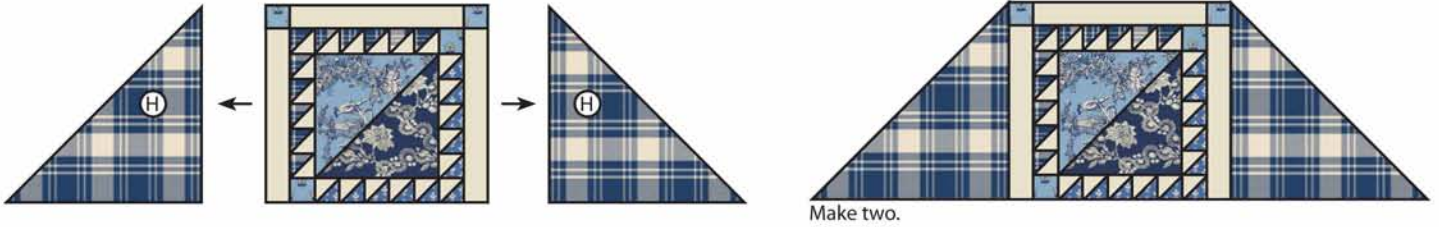
# QUEEN'S LAKE

Page 7

Assemble two Fabric H triangles and one Row One as shown.

Repeat one more time.

Make two.

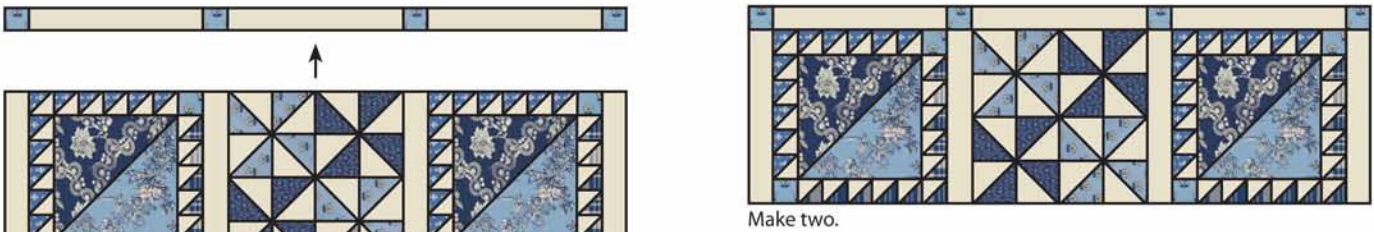


Assemble one Three-Strip Sashing Unit and one Row Two as shown.

Repeat one more time.

Row Two Unit should measure  $16\frac{1}{2}'' \times 50\frac{1}{2}''$ .

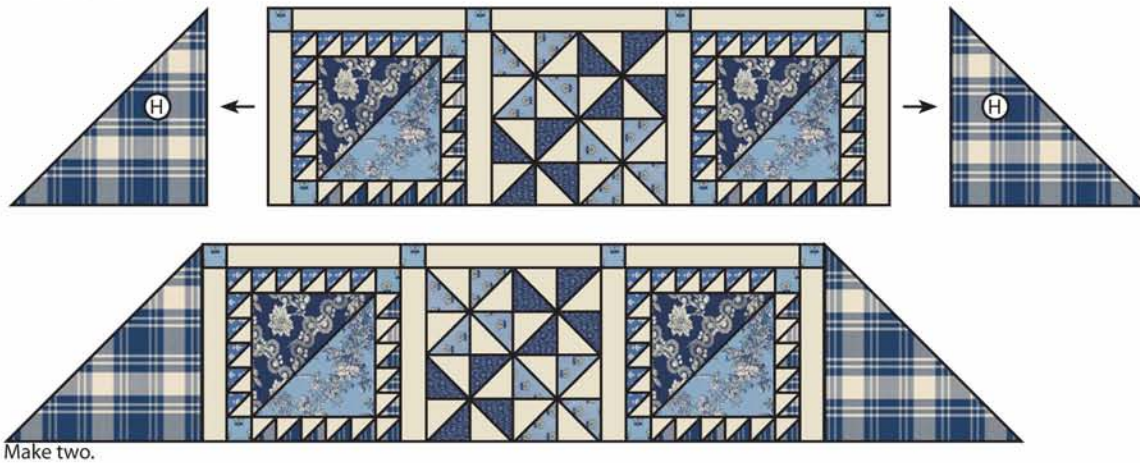
Make two.



Assemble two Fabric H rectangles and one Row Two as shown.

Repeat one more time.

Make two.

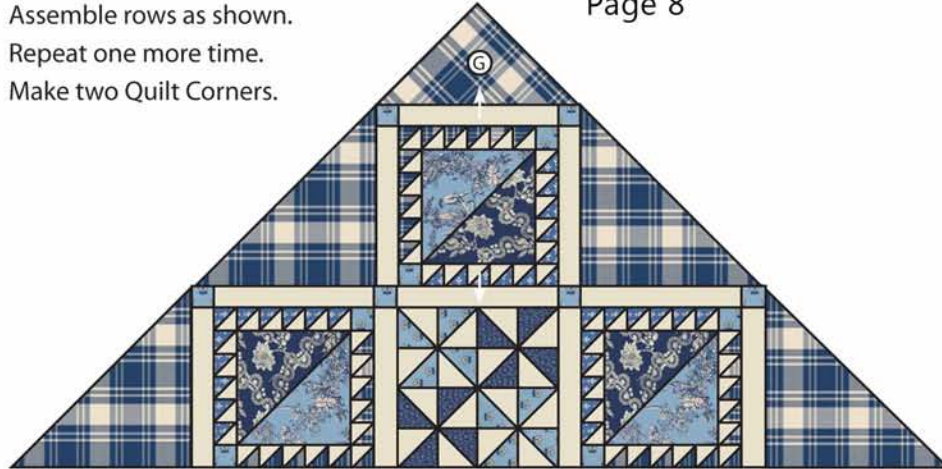




# QUEEN'S LAKE

Page 8

Assemble rows as shown.  
Repeat one more time.  
Make two Quilt Corners.



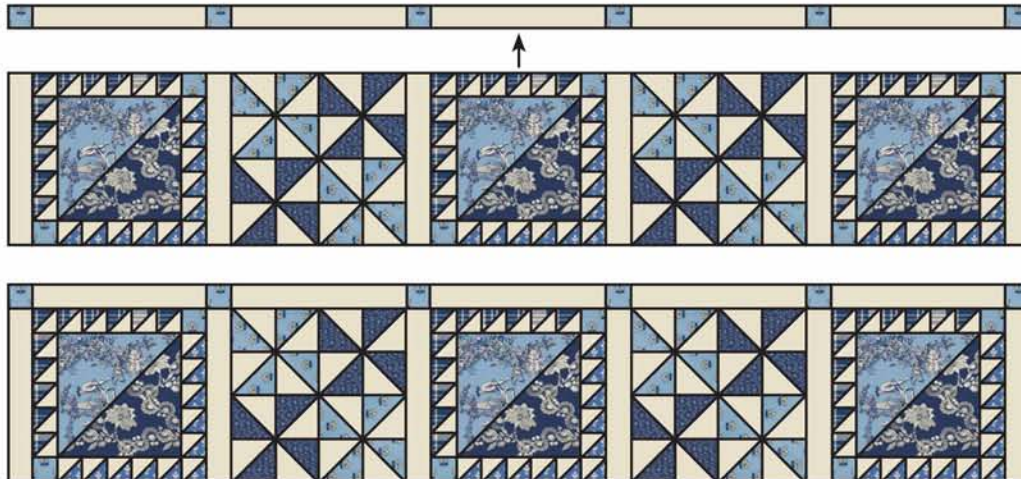
Make two.

Assemble one Five-Strip Sashing Unit and one Row Three as shown.

Repeat one more time.

Row Three Unit should measure 18 1/2" x 82 1/2".

Make two.

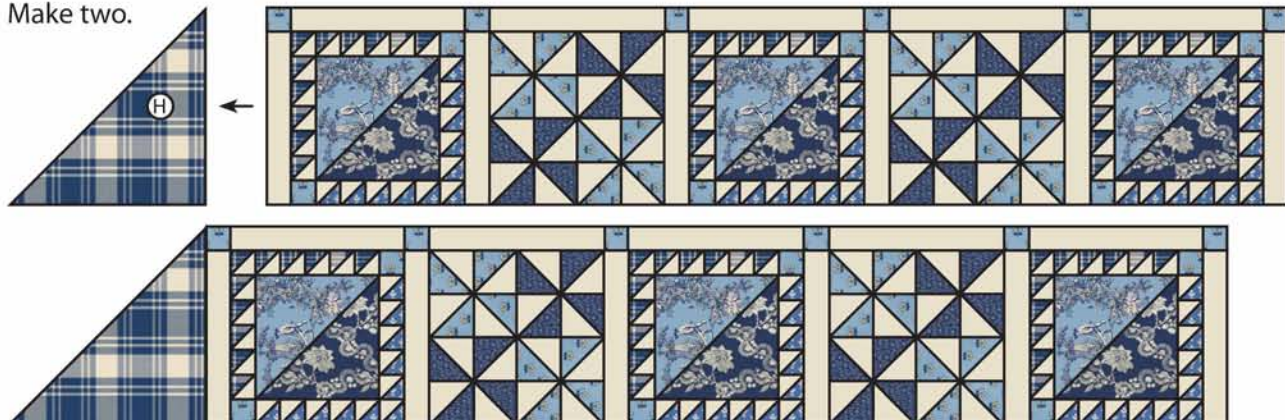


Make two.

Assemble one Fabric H triangle and one Row Three Unit as shown.

Repeat one more time.

Make two.

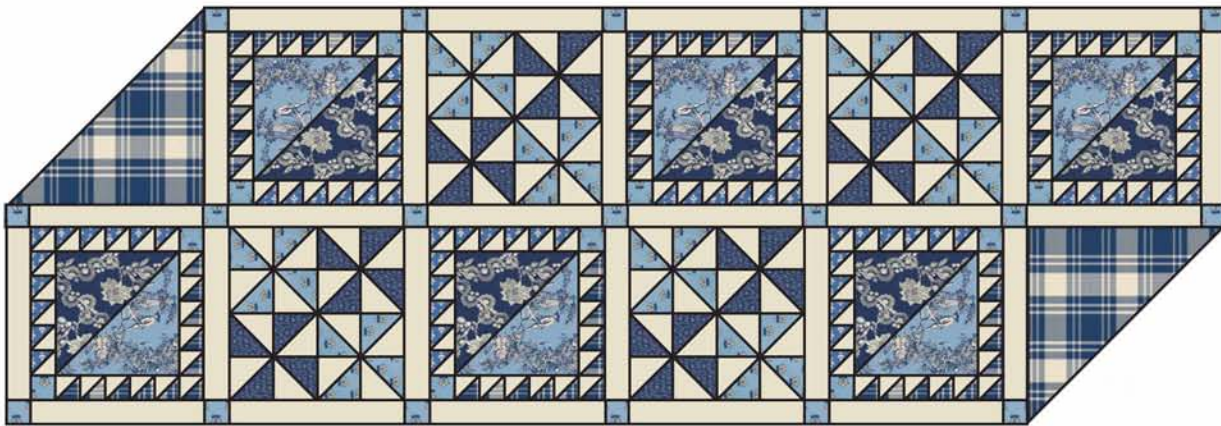
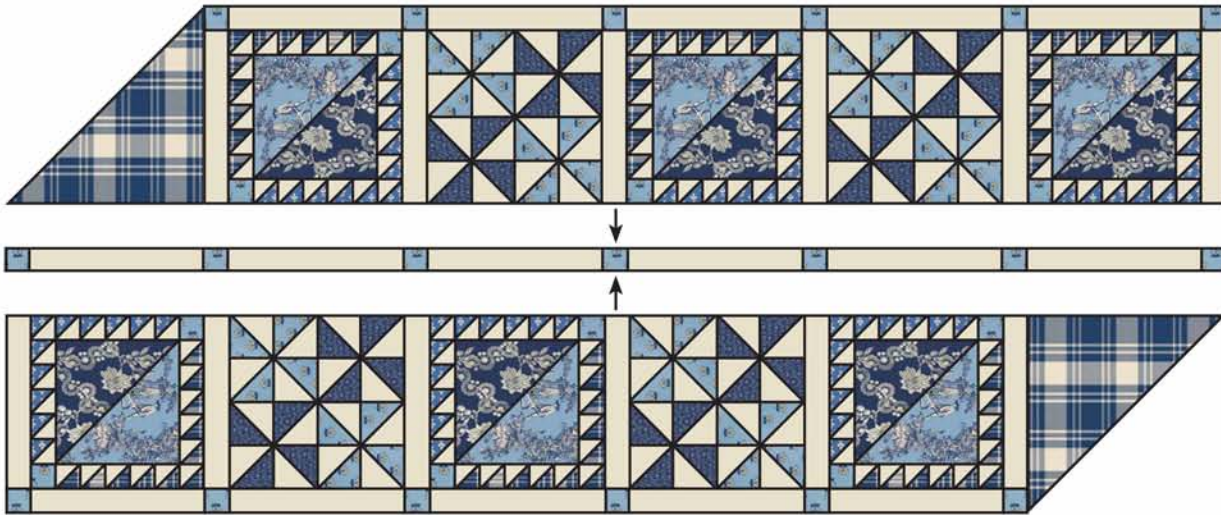


Make two.

# QUEEN'S LAKE

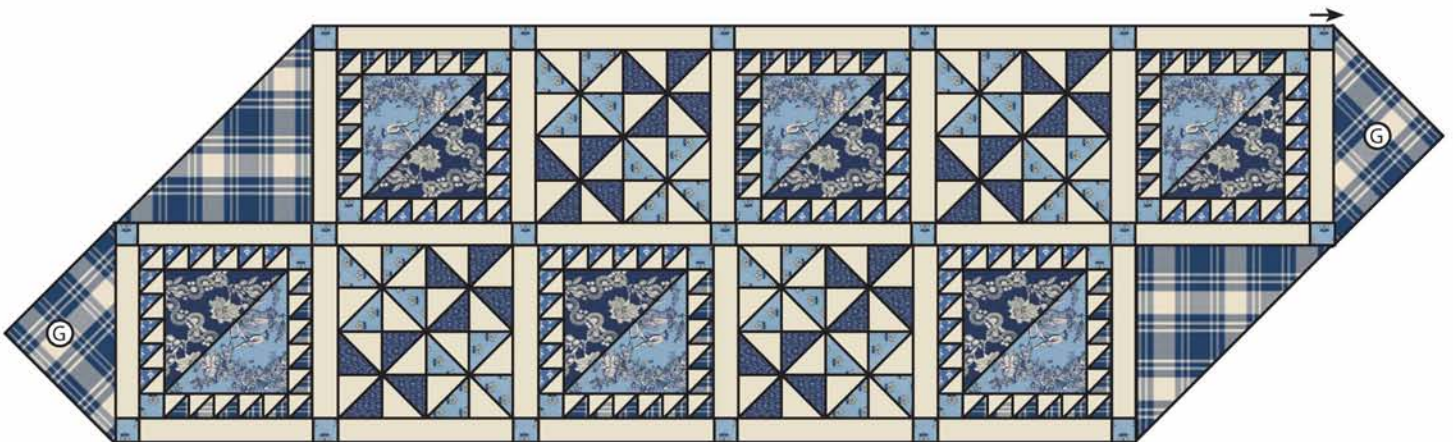
Page 9

Assemble two Row Threes and one Six-Strip Sashing Unit as shown.  
Make one Center Unit.



Make one.

Assemble one Center Unit and two Fabric G triangles as shown.  
Make one.



Make one.

# QUEEN'S LAKE

Page 10

Assemble Quilt Center as shown.



# QUEEN'S LAKE

Page 11

**Finishing:**

Piece Fabric K strips end to end for binding.

Quilt and bind as desired.



For Questions about this quilt, contact Jocelyn Ueng at:  
Jocelyn@itssewemma.com

And see other patterns she has created at: [www.itssewemma.com](http://www.itssewemma.com)

**Be sure to visit [www.windhamfabrics.com](http://www.windhamfabrics.com) to see the complete collection  
and to download other Free Projects**