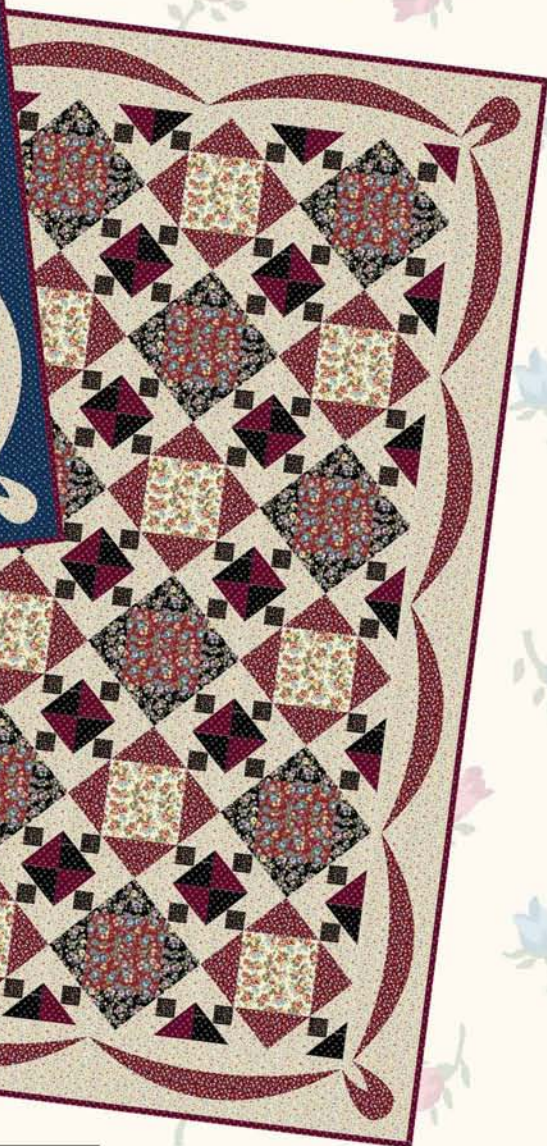


"Queen Charlotte"

Designed by Carolyn Perry Goins
Featuring the Mr. K's Calicos Collection by Whistler Studios
Size: 72" x 84"



Red, White and Blue Quilt



Red and Black Quilt

WINDHAM FABRICS

812 Jersey Ave ~ Jersey City, NJ 07310 ~ 201.659.0444 ~ FAX: 201.659.9719
www.windhamfabrics.com email: retail@windhamfabrics.com

“Queen Charlotte”

Designed by Carolyn Perry Goins
 Featuring the Mr. K's Calicos Collection by Whistler Studios
 Size: 72" x 84"

Queen Charlotte block is a variation of an old traditional block. The appliqué border adds a delicate finish complementing the secondary design created in this block. The border has 3 swags each on the top and bottom and 4 on each side of the quilt top. Finished size block is 12.

Fabric Requirements for Red, White, and Blue quilt:

Center Square:	32037-1 Cream	3/4 yard
	32037-2 Red	3/4 yard
Side/Frame Triangles	32045-4 Navy	3/4 yard
	32037-2 Red	3/4 yard
Background	32042-1 Cream	2 1/4 yards
Small Corner Squares	32043-8 Green	1/2 yard
Corner Triangles	32045-2 Red	1/2 yard
	32045-4 Navy	1/2 yard
Border Swag Appliqué	32043-1 Cream	1 1/4 yards
Border Background	32042-4 Navy	2 1/2 yards
Binding	32042-2 Red	5/8 yard
Backing	your choice	5 1/2 yards



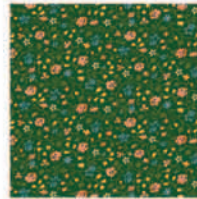
32037-3



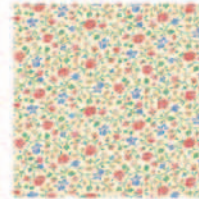
32037-1



32037-2



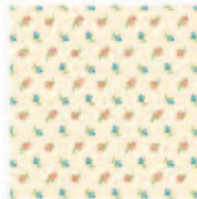
32043-8



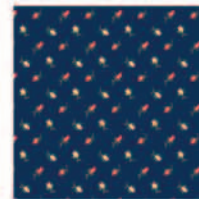
32043-1



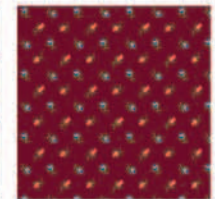
32041-3



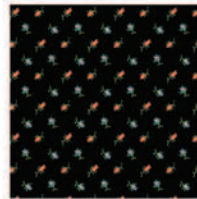
32042-1



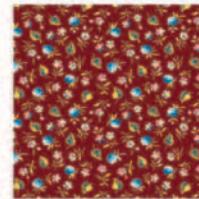
32042-4



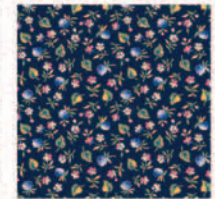
32042-2



32042-3



32045-2



32045-4

Fabric Requirements for Red and Black quilt:

Center Square:	32037-1 Cream	3/4 yard
	32037-2 Red	3/4 yard
Side/Frame Triangles	32037-3 Black	3/4 yard
	32045-2 Red	3/4 yard
Background & Border	32043-1 Cream	4 1/4 yards
Small Corner Squares	32041-3 Black	1/2 yard
Corner Triangles	32042-2 Red	1/2 yard
	32042-3 Black	1/2 yard
Border Swag Appliqué	32045-2 Red	1 1/4 yards
Binding	32042-2 Red	5/8 yard
Backing	your choice	5 1/2 yards



WINDHAM FABRICS



“Queen Charlotte”

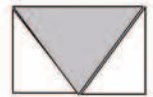
Page 2

Cutting directions: Red, White & Blue Quilt *Cut width of fabric unless stated otherwise.*

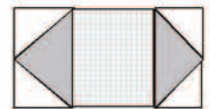
- Center Square - Cut 3 strips of 32037-1 Cream and 3 strips of 32037-2 Red 6 ½” X 40”.
Cut 15 squares from strips in each color group 6 ½” (30 total).
- Side/Frame Triangles- Cut 6 strips of 32045-4 Navy and 6 strips of 32037-2 Red, 7 ¼” X 40”.
Cut 15 squares from strips in each color group 7 ¼” (30 total).
Cut each square in X fashion to total 60 triangles.
- Background- Cut 12 strips of 32042-1 Cream, 4” X 40”. Cut 10 squares from each strip 4” square, cut once on diagonal creating 240 triangles.
- Small corner background- Cut 8 strips of 32042-1 Cream, 2 ½” x 40”.
Cut 16 squares from each strip 2 ½” square (120 total), cut once on diagonal creating 240 triangles. There will be extra squares.
Remaining background fabric will be used for borders.
- Small Corner Squares- Cut 6 strips of 32043-8 Green, 2” X 40”. Cut 20 squares from each strip 2” square (120 total).
- Color Corner Triangles- Cut 3 strips each of 32045-2 Red and 320455-4 Navy, 4” X 40”.
Cut 10 squares from each strip 4” square (30 each color). Cut once on diagonal to create 60 triangles each color.
- Border Background- Cut 4 strips length of fabric 6” X 84” of 32042-4 Navy.
Cut 4 squares from remaining background fabric 6” X 6” for corner border blocks.
- Border Swag Appliqué- Cut 7 strips of 32043-1 Cream length of fabric 5” X 45” with right sides of fabric together. Fold ends of strip to center to create double thickness.
Place template on fold of fabric as instructed on template.
Cut 6 swags total for top and bottom, which will be 20” in length.
Cut 8 swags total for sides, which will be 18” in length. Label swags sides or top/bottom. From remaining fabric cut 4 corner swags. Follow grain lines on template for the corner squares.

Block Assembly: ‘Red Center’- *Chain piecing will save time.*

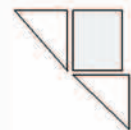
Pin and sew a 4” 32042-1 Cream background triangle to side of 32045-4 Navy triangle.
Pin and sew another cream background triangle to opposite side creating a rectangle.
Repeat on all Navy triangles. Gently press seam allowance to dark side.



Pin and sew a navy/cream rectangle unit to side of 6 ½” center square, 32037-2 Red.
Pin and sew another navy/cream rectangle unit to opposite side.
Repeat on all Red center squares.



• Corner units- Pin and sew small 2 ½” cream background triangles to side of small 2” squares 32043-8 Green.
Pin and sew another small cream background triangle to adjoining side creating a larger triangle. Repeat on all small green squares.



WINDHAM FABRICS



“Queen Charlotte”

Page 3

Red, White & Blue Quilt *Continued*

Pin and sew a Red 4” triangle 32045-2 Red to the cream background base of green square/triangle unit. (60 total Red units needed). Press to dark fabric.



Pin and sew a corner unit to one side of navy/cream unit, with the navy and red triangle pointing outward. Refer to diagram for placement direction.
Pin and sew another corner unit to opposite side of navy/cream rectangle.
Repeat on remaining units.



Lay out all units on work surface and assemble in 9 Patch fashion.
Pin and sew row to top or bottom of red center square row making sure intersecting seams match. Repeat on remaining units to complete 15 blocks.



Block Assembly: ‘Cream Center’- order of construction is same except the color choice is different. Pin and sew a 4” 32042-1 Cream background triangle to side of 32037-2 Red triangle. Pin and sew another to opposite side as shown in diagram above. Repeat on all red triangles. Press to dark side.

Pin and sew a red/cream rectangle to side of 6 ½” center square, 32037-1 Cream. Pin and sew another red/cream rectangle to opposite side. Repeat on all cream center squares.

- Corner units- As construction above except using the Navy triangles in place of the Red. Refer to diagram.

Pin and sew a corner unit to one side of remaining red/cream unit, with the red/green corner triangle pointing outward. Refer to diagram above. Pin and sew another corner unit to opposite side of red/cream rectangle. Repeat on remaining units (30 total) creating a row. Refer to diagram above.
Pin and sew row to top or bottom of cream center square row making sure intersecting seams match. Refer to diagram. Repeat on remaining units to complete 15 blocks.

Row Assembly: Lay blocks on work surface, 5 blocks across and 6 blocks down, alternating color blocks. Pin and sew block-to-block forming rows. Refer to picture.
Pin and sew each row to the next row making sure seam intersections match. Complete 6 rows. Measure and square completed top.

Border Swag Appliqué: Appliqué swags before sewing borders to quilt top. Appliqué may be sewn by hand or preferred manner. Seam allowance has been added to the template and may affect size if ‘fusing’ method is used for appliqué.

- Corner Appliqué block- Appliqué corner loop first as it will determine placement of ‘border swags’ from the top raw edge of border strip. Appliqué swag loop ¼” from sides of corner square background. Refer to picture.

Each side border has 4 swags each measuring 18” long. The top and bottom border each have 3 swags each measuring 20” long. Pin and sew appliqué approximately 1” down from top raw edge, adjusting for the placement of the corner loop. Side point ends of one swag should meet the next swag point. Refer to picture. At border’s side the end points of the swag should finish ¼” from raw edge to allow seam allowance to join border strips and corners together.



WINDHAM FABRICS



“Queen Charlotte”

Page 4

Red, White & Blue Quilt *Continued*



Assemble Swag Borders to Quilt Top:

Pin and sew a 4-swag border to a side of quilt top making sure swags are in correct direction. Refer to Picture. Pin and sew the other 4-swag border to the opposite side of quilt top.

Pin and sew a corner appliqué block to each end of a 3-swag border. Pin and sew a 3-swag lengths border to the top of quilt top matching the seam allowances at side border intersections. Repeat process for bottom border of quilt. Press seam allowances to the border direction.

Baste and quilt as desired. Bind with the 32042-2 Red. Make a label for the quilt and enjoy.

Cutting directions: Red and Black Quilt - *Cut width of fabric unless stated otherwise.*

- Center Square - Cut 3 strips of 32037-1 Cream and 3 strips of 32037-2 Red 6 ½" X 40".
Cut 15 squares from strips in each color group 6 ½" (30 total).
- Side/Frame Triangles- Cut 6 strips of 32037-3 Black and 6 strips of 32045-2 Red, 7 ¼" X 40". Cut 15 squares from strips in each color group 7 ¼" (30 total).
Cut each square in X fashion to total 60 triangles. 
- Background- Cut 12 strips of 32043-1 Cream, 4" X 40".
Cut 10 squares from each strip 4" square, cut once on diagonal creating 240 triangles. 
- Small corner background- Cut 8 strips of 32043-1 Cream, 2 ½" x 40". Cut 16 squares from each strip 2 ½" square (120 total), cut once on diagonal creating 240 triangles.
There will be extra squares.
Remaining background fabric will be used for borders.
- Small Corner Squares- Cut 6 strips of 32041-3 Black, 2" X 40".
Cut 20 squares from each strip 2" square (120 total).
- Color Corner Triangles- Cut 3 strips each of 32042-2 Red and 32042-3 Black, 4" X 40".
Cut 10 squares from each strip 4" square (30 each color). Cut once on diagonal to create 60 triangles each color.
- Border Background- Cut 4 strips length of fabric 6" X 84" of 32043-1 Cream.
Cut 4 squares from remaining background fabric 6" X 6" for corner border blocks.
- Border Swag Appliqué- Cut 7 strips of 32045-2 Red length of fabric 5" X 45" with right sides of fabric together. Fold ends of strip to center to create double thickness.
Place template on fold of fabric as instructed on template.
Cut 6 swags total for top and bottom, which will be 20" in length. Cut 8 swags total for sides, which will be 18" in length. Label swags sides or top/bottom.
Remaining fabric will be used cutting corner swags. Follow grain lines on template (4 total) for the corner squares.



WINDHAM FABRICS



“Queen Charlotte”

Page 5

Red and Black Quilt - *Continued*

Block Assembly: ‘Red Center’ - *Chain piecing will save time.*

Pin and sew a 4” 32043-1 Cream background triangle to side of 32037-3 Black triangle.
Pin and sew another cream background triangle to opposite side creating a rectangle.
Repeat on all black triangles. Press seam allowance to dark side.
Pin and sew a black/cream rectangle unit to side of 6 ½” center square, 32037-2 Red.
Pin and sew another black/cream rectangle unit to opposite side.
Repeat on all Red center squares.

- Corner units- Pin and sew small 2 ½” cream background triangles to side of small 2” 32043-3 Black squares.

Pin and sew another small cream background triangle to adjoining side creating a larger triangle. Repeat on all small black squares.

Pin and sew a Red 4” triangle 32042-2 to cream background base of black square/triangle unit. (60 total Red units needed). Press to dark fabric.

Pin and sew a corner unit to one side of black/cream unit, with the black and red triangle pointing outward. Refer to diagrams for placement direction.
Pin and sew another corner unit to opposite side of black/cream rectangle.
Repeat on remaining units (30 total) creating a row.

Lay out all rows on work surface and assemble in 9 Patch fashion.
Pin and sew row to top or bottom of red center square row making sure intersecting seams match. Refer to diagrams. Repeat on remaining units to complete 15 blocks.

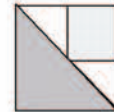
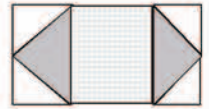
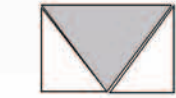
Block Assembly: ‘Cream Center’ - order of construction is same except the color choice is different.

Pin and sew a 4” 32043-1 Cream background triangle to side of 32037-2 Red triangle.
Pin and sew another to opposite side. Repeat on all red triangles. Press to dark side.
Pin and sew this red/cream rectangle to the side of a 6 ½” cream center square. Pin and sew another red/cream rectangle unit to opposite side. Repeat on all cream center squares. Refer to diagram above.

- Corner units- As constructed above except using the black triangles in place of red. Refer to diagram.

Pin and sew a corner unit to one side of remaining red/cream unit, with the red and black corner triangle pointing outward. Refer to picture for placement direction. Pin and sew another corner unit to opposite side of red/cream rectangle. Repeat on remaining units (30 total) creating a row.
Pin and sew row to top or bottom of cream center square row making sure intersecting seams match. Refer to diagram above. Repeat on remaining units to complete 15 blocks.

Row Assembly: Lay blocks on work surface, 5 blocks across and 6 blocks down, alternating color blocks.
Pin and sew block-to-block forming rows. Refer to picture.
Pin and sew each row to the next row making sure seam intersections match. Complete 6 rows.
Measure and square completed top.



WINDHAM FABRICS



“Queen Charlotte”

Page 6

Red and Black Quilt - *Continued*

Border Swag Appliqué: Appliqué before sewing border strip to quilt top. Appliqué may be sewn by hand or preferred manner. Seam allowance has been added to the template and may affect size if ‘fusing’ method is used for appliqué.

Corner Appliqué block- Appliqué corner loop first as it will determine placement of ‘border swags’ from the top raw edge of border strip. Appliqué swag loop $\frac{1}{4}$ ” from sides of corner square background. Refer to picture.

Each side borders has 4 swags each measuring 18” long. The top and bottom border has 3 swags each measuring 20” long. Pin and sew swag approximately 1” down from top raw edge, adjust for the placement of the corner loop. Side point ends of one swag should meet the next swag point. Refer to picture. At border’s side the end points of the swag should finish $\frac{1}{4}$ ” from raw edge to allow seam allowance to join border strips and corners together.

Assemble Swag Borders to Quilt Top:

Pin and sew a 4-srag border to a side of quilt top making sure swags are in correct direction. Refer to Picture. Pin and sew the other 4-srag border to the opposite side of quilt top.

Pin and sew a corner appliqué block to each end of a 3-srag border. Pin and sew a 3-srag border to the top of quilt top matching the seam allowances at side border intersections. Repeat process for bottom border of quilt. Press seam allowances towards border.

Baste and quilt as desired. Bind with the 32042-2 Red. Make a label for the quilt and enjoy.

See page 7 for Templates

Be sure to visit www.windhamfabrics.com to see the complete collection and to download this and other Free Projects



WINDHAM FABRICS



"Queen Charlotte"

Page 7

TEMPLATES FOR BOTH QUILTS

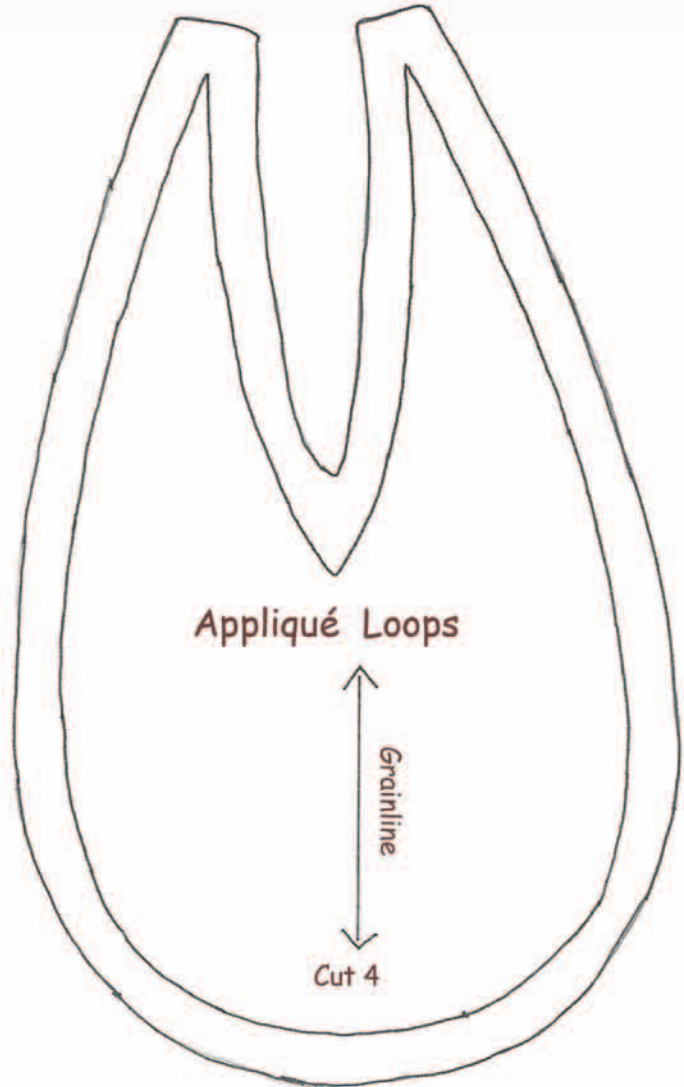


Place on Fold
for 20" Top +
Bottom Cut 6



Place on Fold
for 18" sides
Cut 8

Appliqué
Swags



Appliqué Loops

Grainline

Cut 4

