

"Prim Roses"

REVISED

Designed by Petra Prins
Featuring the Victorian Rose Collection by Mary Koval
Size: 67 1/2" x 67 1/2"



WINDHAM FABRICS

812 Jersey Ave ~ Jersey City, NJ 07310 ~ 201.659.0444 ~ FAX: 201.659.9719
www.windhamfabrics.com email: retail@windhamfabrics.com

"Prim Roses"

Designed by Petra Prins

Featuring the Victorian Rose Collection by Mary Koval

Size: 67 1/2" x 67 1/2"

Fabric Requirements:

- 1 1/8 yd 32054-1
- 2 1/8 yd 32049-2
- 7/8 yd 32050-5 (for binding and triangles)
- 1/2 yd 32055-1
- 1/4 yd each of 32053-1 / 32053-4 / 32053-5
- 3/8 yd each of 32050-1 / 32050-3
- 1 fat quarter 32050-3 (for Bias Stems)
- Fat eight of 32050-4 / 32051-2 / 32052-3 / 32055-3 /
32055-5 / 32053-4 / 32053-5



32049-2



32055-1



32055-3



32050-1



32050-3



32050-4



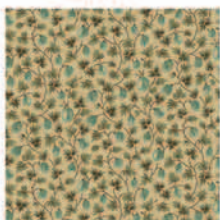
32050-5



32054-1



32051-2



32052-3



32053-1



32053-4



32053-5

Center Appliqué:

Cut for the center from 32054-1 one 22" x 22" square, this is larger than actual square, after you appliquéd cut to the right size 20 1/2" x 20 1/2". Use for the appliqué pattern the fat eighths for the flowers, 32055-5 for the vase and 32050-3 for the leaves and stems. Trace patterns for urn, flowers, leaves and stems onto lightweight sewable fusible web. Follow the manufacturer's instructions for application. You can either hand appliqué with a small blanket stitch or machine appliqué with invisible thread, using a very narrow zig zag stitch. (See *Appliqué layout on page 5*)



WINDHAM FABRICS

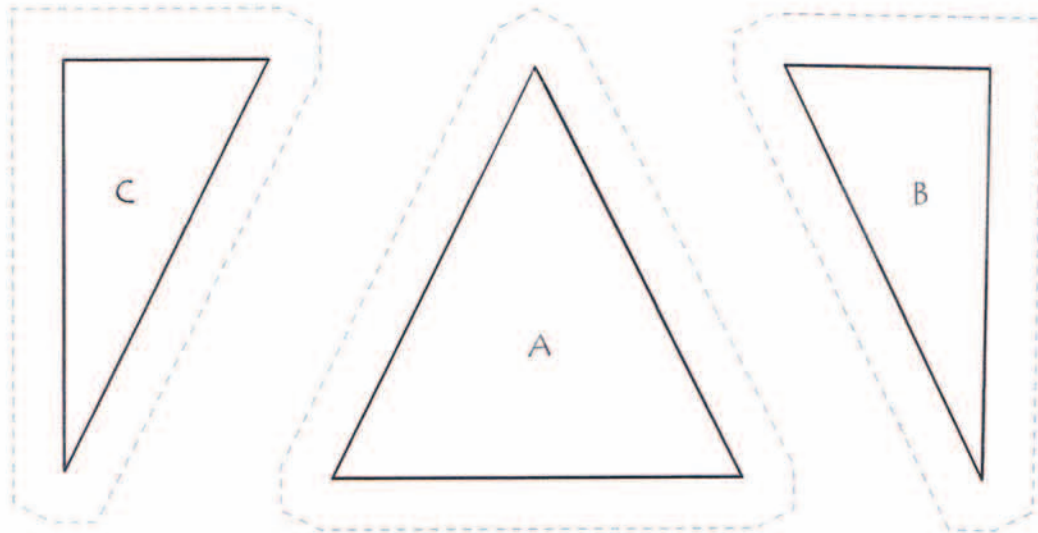
"Prim Roses"

Page 2

First border:

From 32054-1 cut 36 triangles using template A, 4 triangles using template B and 4 triangles using template C. From 32050-5 cut 40 triangles using template A. Check your copy to be sure the finished area of each triangle is 2" top to bottom.

For the corner blocks cut from 32055-3 four 2 1/2" x 2 1/2" squares. Sew on to the center.



Second border:

Cut from 32055-1 four 3 1/2" x 24 1/2" strips.

Cut from the border print 32049-2 eight 3 1/2" x 3 1/2" squares. Use 4 corner blocks in this border, save the other 4 for the corner blocks in the third border. Sew two 3 1/2" x 24 1/2" strips onto the right and left side of the center. Sew corner blocks onto the remaining 3 1/2" x 24 1/2" strips and add to top and bottom of the center.

Third border:

Cut four 1 1/2" x 30 1/2" strips from each of 32053-1 / 32053-4 / 32053-5. Sew together (refer to quilt picture) and sew onto the center (refer to second border for corner blocks setting)

Fourth Border:

Cut from 32054-1 sixty eight (68) 1 7/8" x 1 7/8" squares, thirty-six (36) 3 1/2" x 3 1/2" squares twice diagonal (Figure 2) to get 144 triangles and eight (8) 1 7/8" x 1 7/8" squares once diagonal (Figure 3) for the corners.

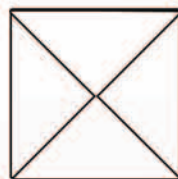


Figure 2

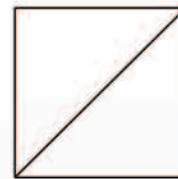


Figure 3

"Prim Roses"

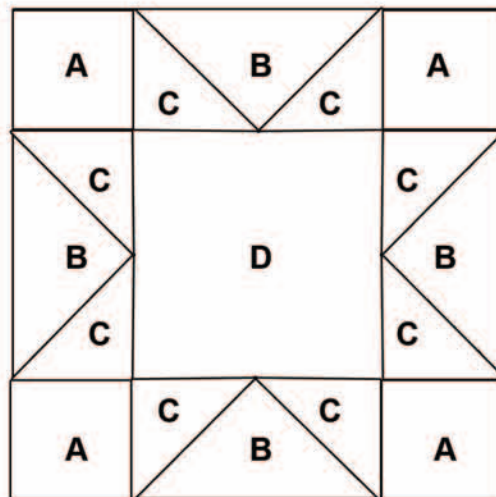
Page 3

Cut 144 squares $1\frac{7}{8}$ " x $1\frac{7}{8}$ " from scraps that are left from the fat eighths (32050-4 / 32051-2 / 32052-3 / 32055-3 / 32055-5 / 32053-4 / 32053-5), the fat quarter (32050-3), the $\frac{1}{4}$ yard pieces (32053-1 / 32053-4 / 32053-5) and the $\frac{1}{2}$ yard piece (32055-1).

Sew together referring to quilt picture. Each border should measure $4\frac{1}{2}$ " x $36\frac{1}{2}$ ".

Make four star blocks for corners:

For the 4 blocks cut from 32054-1 sixteen $1\frac{1}{2}$ " x $1\frac{1}{2}$ " squares for A, four $3\frac{1}{4}$ " x $3\frac{1}{4}$ " squares twice diagonal for B (Figure 2). From 32050-4 / 32053-4 cut a total of sixteen $1\frac{7}{8}$ " x $1\frac{7}{8}$ " once diagonal for C (Figure 3). From 32053-5 cut four $2\frac{1}{2}$ " x $2\frac{1}{2}$ " squares for D.



Fifth, sixth and seventh border:

Cut from 32050-1 / 32050-3 each five 2" strips. Sew them together and divide in four 2" x 54" strips (or use your own method to make four strips).

Cut from 32049-2 four strips lengthwise from the fabric. The length should be at least 72" (2 yards) because of the mitered corners.

Sew the 5th, 6th and 7th border strips together to make four borders. Sew onto the top, bottom and sides with mitered corners. Of course you may also want to use the long horizontal / vertical method of putting the borders on if you choose not to use miters.

Layer top, batting and backing. Quilt as you desire. Bind your quilt with fabric 32050-5.

ENJOY!

Be sure to visit www.windhamfabrics.com to see the complete collection and to download this and other Free Projects

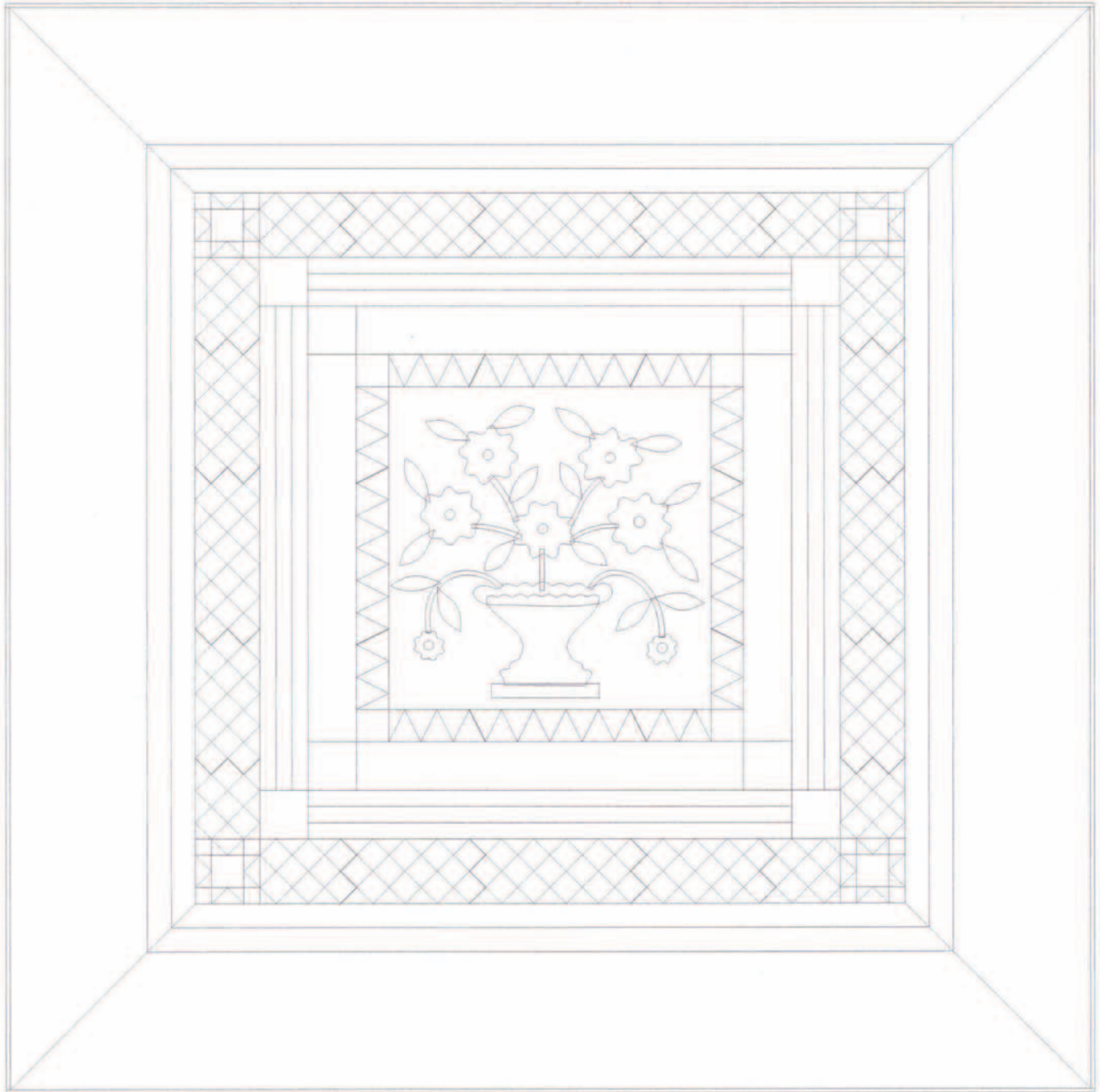


WINDHAM FABRICS

"Prim Roses"

Page 4

Quilt Piecing Layout

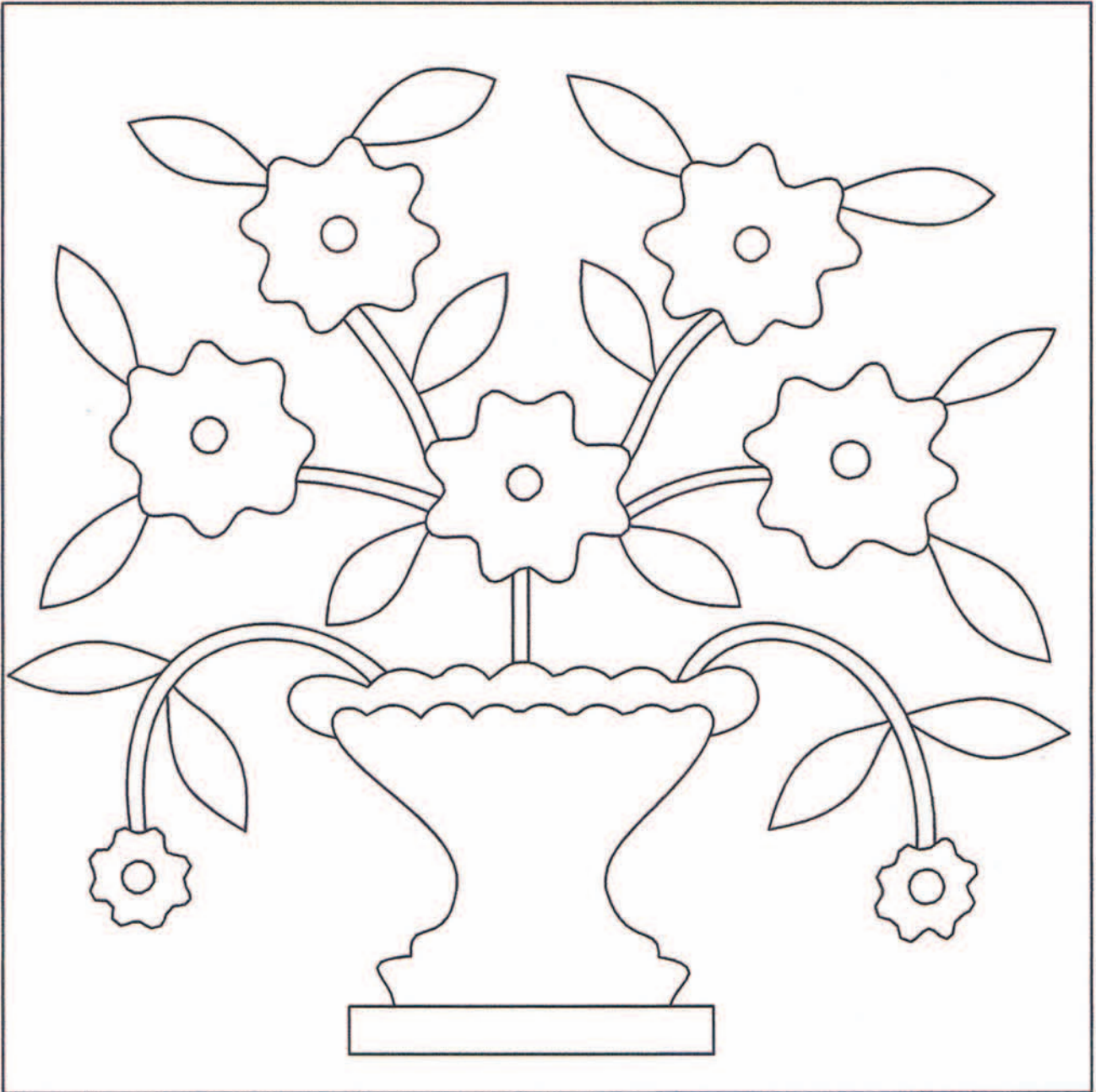


WINDHAM FABRICS

"Prim Roses"

Page 5

Center Appliqué Layout
Increase 300%



WINDHAM *W* **FABRICS**