

POLITICAL PERSUASION

Designed by Laren Smith of the Quilted Button
Featuring the Honor and Glory Collection by Whistler Studios
Size: 21" x 57"

Republican Wall Hanging



Democratic Wall Hanging



Feel free to download additional copies of this and other projects by visiting our website: www.windhamfabrics.com

WINDHAM FABRICS

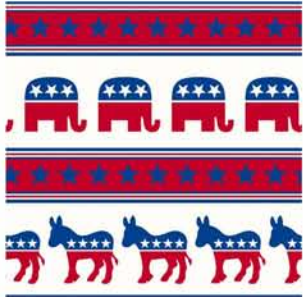
812 Jersey Ave ~ Jersey City, NJ 07310 ~ 201.659.0444 ~ FAX: 201.659.9719
www.windhamfabrics.com email: retail@windhamfabrics.com

POLITICAL PERSUASION

Designed by Laren Smith of the Quilted Button
Featuring the Honor and Glory Collection by Whistler Studios
Size: 21" x 57"

© 2012 Copyright All Rights Reserved

In this politically charged year, you can take sides by creating a wall hanging that states what you firmly believe. all in the spirit of fun, enjoy making these clever statements of your Political Persuasion. Great for campaign headquarters!



35015-2



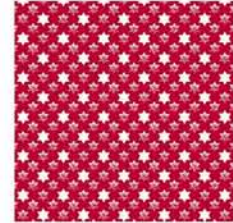
35013-1



35013-3



35014-1



35014-3



35017-3



31836 Navy



35030 Red

Fabric Yardage for Each Side

- 1/4 Yard 35013-3 Red (Background)
- 1/4 Yard 35013-1 Blue (Background)
- 1/4 Yard 35014-1 Blue (Stars)
- 1/4 Yard 35014-3 Red (Stars)
- 1-3/4 Yards 35018-2 White (Political – Fussy Cut)
- 3/8 Yard 25030 Red Solid (1930's Solid)
- 1/2 Yard 31836 Navy Solid (Includes Border) (1930's 2 Solid)
- 5/8 Yard 35017-3 Red (Large Binding)

If Only doing just ONE side the backing will be required for individual wall hangings:

Backing: 1-7/8 Yards 35015-1 Blue

Instructions

- Pre-wash and press all fabric with Mary Ellen's Best Press to reduce bias.
- All seams are sewn with a 1/4" seam allowance.
- All seams are pressed open to reduce bulk.
- Finished block of STARS is 5" square.
- (9) Blocks of Red and (9) Blocks of Blue.
- Label all fabric when cutting for less confusion.
- These instructions are for ONE side of the Wall Hanging.
- If doing both sides cut double the fabric except for the BINDING.



WINDHAM FABRICS

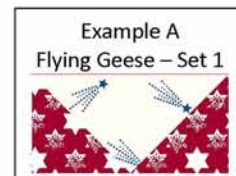


POLITICAL PERSUASION

Page 2

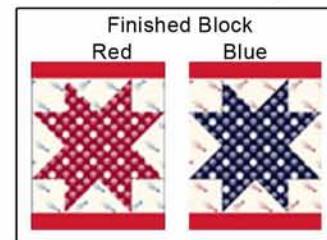
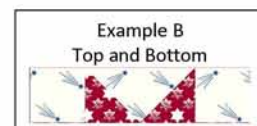
Step 1 – Preparing the Fabric

1. #35013-3 (Blue Star Background) – Cut (2) strips at 1-1/2” x WOF – Sub-cut into (36) 1-1/2” squares AND (2) strips at 2-1/2” x WOF – Sub-cut into (36) 1-1/2” x 2-1/2” rectangles.
2. #35013-1 (Red Star Background) – Cut (2) strips at 1-1/2” x WOF – Sub-cut into (36) 1-1/2” squares AND (2) strips at 2-1/2” x WOF – Sub-cut into (36) 2-1/2” x 1-1/2” rectangles.
3. #35014-1 (Blue Stars) – Cut (1) strip at 2-1/2” x WOF – Sub-cut into (9) 2-1/2” squares AND (3) strips at 1-1/2” x WOF – Sub-cut into (72) 1-1/2” squares – Draw a diagonal line from tip to tip on the WRONG side of the fabric.
4. #35014-3 (Red Stars) – Cut (1) strip at 2-1/2” x WOF – Sub-cut into (9) 2-1/2” squares AND (3) strips at 1-1/2” x WOF – Sub-cut into (72) 1-1/2” squares – Draw a diagonal line from tip to tip on the WRONG side of the fabric.
5. #25030 (Red Solid) – Cut (1) strip at 4-1/2” x WOF – Sub-cut into (36) 4-1/2” x 1” rectangles.
6. #31836 (Blue Solid) – Cut (6) strips at 1” x WOF – Sub-cut into (12) 15-1/2” x 1” rectangles AND (4) strips at 1-1/4” x WOF for the INNER BORDER.
7. #35018-2 (Political) – Fussy cut the Elephants **OR** the Donkeys as follows:
 - a. (3) strips at 2” from RAW EDGE to RAW EDGE for the OUTER BORDER.
 - b. (2) strips at 3-1/2” from RAW EDGE to RAW EDGE – Sub-cut into (7) 3-1/2” x 15-1/2” rectangles for the SASHING.
8. #35017-3 (Red Large Binding) – Cut (5) strips at 4-1/2” x WOF for the BINDING



Step 2 – Star Block

9. Each block will be sewn exactly the same way except for the color of the fabric will change.
 - a. Red Block - #35013-1 (Background), #35014-3 (Red Stars), #25030 (Red Solid).
 - b. Blue Block - #35013-3 (Background), #35014-1 (Blue Stars), #25030 (Red Solid).
10. **RED BLOCK:** Using “#35014-3 (Red Stars)” 1-1/2” squares layer (1) onto each 1-1/2” edge of the #35013-1 (Background) 1-1/2” x 2-1/2” rectangle.
11. Pin to secure and sew on the drawn line.
12. Trim 1/4” past the seam towards the outer edge and press towards the DARK fabric to finish the FLYING GEESE rectangle at 1-1/2” x 2-1/2” – Label SET 1.
13. Repeat from Instruction No. 10 until completed a total of (36) units – Example A.
14. Sew (1) “#35013-1 (Background) 1-1/2” square to each SIDE edge of SET 1 to make a new rectangle at 1-1/2” x 4-1/2” – Make (18) for the TOP and BOTTOM of the block – Example B.
15. Sew (1) of SET 1 to opposite edges of the “#35014-3 (Red Stars)” 2-1/2” square to make a new rectangle at 2-1/2” x 4-1/2” rectangle – Example C – SET 2.
16. Sew (1) of SET 1 to the TOP and BOTTOM of SET 2 to make a new square at 4-1/2” square.
17. Sew (1) “#25030 (Red Solid)” 1” x 4-1/2” rectangle to the TOP and BOTTOM to finish the block at 4-1/2” x 5-1/2” – See Finished Block.
18. Make (9) Red Blocks.
19. The BLUE BLOCK is sewn together exactly the same way as the RED BLOCKS just sewn.
20. Pay attention to the color of fabric – Make (9) Blue Blocks – See Finished Block.



WINDHAM FABRICS

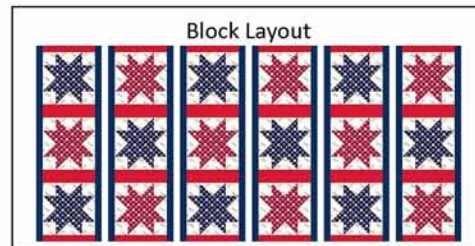


POLITICAL PERSUASION

Page 3

Step 3 – Sewing the Blocks Together

21. There are (3) blocks per COLUMN with a total of SIX columns.
22. Sew the blocks together with TOP to BOTTOM.
23. Using the “#31836 (Blue Solid) 1” x 15-1/2” rectangle sew (1) to each side to finish the columns at 5-1/2” x 15-1/2”.



Step 4 – Adding the Sashing and Borders

24. Sew (1) “#35018-2 (Political)” 3-1/2” x 15-1/2” rectangle to each 15-1/2” edge – KEEP IN MIND the direction of this fabric so that ALL the sashing pieces are all going in the same direction – Refer to the FINISHED WALL HANGING to finish the quilt center at 15-1/2” x 51-1/2”.
25. Using “#31836 (Blue Solid) 1-1/4” strips sew on the Top and Bottom and then the SIDES to finish the INNER BORDER.
26. Using “#35018-2 (Political)” 2” x 17” rectangles sew on the TOP and BOTTOM.
27. Using “#35018-2 (Political) 2” strips sew on the sides to finish the quilt top – Make sure the fabric goes in the correct direction – Refer to the FINISHED WALL HANGING.



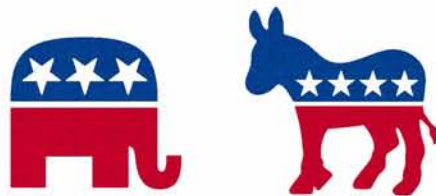
NOTE: Repeat from Step 1 to sew the back if doing a double sided quilt.

Step 5 – Finishing the Quilt (Wall Hanging)

28. Layer the backing, batting and quilt top and quilt as desired. BE SURE that the batting is at least 2” larger than the quilt top as this will go down to 1/2” past the quilt top to allow for a WIDE BINDING.
29. Using “#35017-3 (Red Large Binding)” 4-1/2” strips sew on the BINDING.

ENJOY!

For Question about this quilt or want to see more patterns from
The Quilted Button
visit: www.thequiltedbutton.com



Always look on our website before starting your project to see
if there are any updates or corrections

Be sure to visit www.windhamfabrics.com to see the complete collection
and to download this and other Free Projects

WINDHAM FABRICS