



Poinsetta Promenade

By Betty New

Featuring The Mistletoe Collection by Rosemarie Lavin
Size: 74.5" x 74.5"



WINDHAM FABRICS

812 Jersey Ave ~ Jersey City, NJ 07310 ~ 201.659.0444 ~ FAX: 201.659.9719
www.windhamfabrics.com email: retail@windhamfabrics.com

Poinsetta Promenade

By Betty New

Featuring The Mistletoe Collection by Rosemarie Lavin

Size: 74.5" x 74.5"

Fabric Requirements

32318-1M Cream $\frac{3}{4}$ yard
32318-2M Black $\frac{3}{4}$ yard
32319-1M Cream $\frac{1}{2}$ yard (fussy cutting involved)
32319-3M Green $\frac{1}{2}$ yard (fussy cutting involved)
32320-4M Red 1 yard (assumes borders are pieced)
32321-3M Green $\frac{3}{8}$ yard (fussy cutting)
32322-1M Cream $\frac{3}{4}$ yard
32322-2M Black 1 yard
32322-4M Red $\frac{3}{4}$ yard (assumes borders are pieced)
32324-1M Cream 2 yards (includes binding)
32324-2M Black $\frac{3}{4}$ yard (assumes borders are pieced)
Backing 4 $\frac{1}{4}$ yards



32318-2M



32324-2M



32324-1M



32320-4M



32318-1M



32319-1M



32319-3M



32321-3M



32322-1M



32322-4M

Fabric Cutting Instructions:

Starch and press all fabrics before cutting.

Rulers include 15 $\frac{1}{2}$ " square, 5 $\frac{1}{2}$ " square, and 24" long ruler.

32318-1M Cream with Red Poinsettias and

32318-2M Black with Red Poinsettias

Cut 16" squares of two cream and two black. Use a 15 $\frac{1}{2}$ inch square ruler to mark two cream and two black squares. Place the ruler in such a way as to include four complete poinsettias surrounded evenly by nine squares on point. Trace around the ruler with a marking pencil. This is the sewing line, not the cutting line. Add $\frac{1}{4}$ " to all sides for seam allowance and then cut. Re-measure to ensure that the squares are now 16".

32322-1M Cream with gold

Twelve strips 1 $\frac{1}{2}$ " X Width of Fabric

Sixteen 1 $\frac{1}{2}$ " X 1 $\frac{1}{2}$ " squares

Sixteen 2" X 2" squares



WINDHAM FABRICS

Poinsetta Promenade

By Betty New

Page 2

Fabric Cutting Instructions:

32322-2M Black with gold

Twelve strips 1 ½" X WOF
One hundred seventy-six 1 ½" X ½" squares
Four 2 ½" X 2 ½" squares

32322-4M Red with gold

Five strips 3" X WOF
Four 3 ½" X 3 ½" squares

32324-Cream with Mistletoe Berries

Eighteen strips 1 ½" X WOF
Eleven 5 ½" X 5 ½" squares
***Use remaining fabric for binding*

32319-1M Cream with Cardinals and

32319-3M Green with Cardinals

Eleven 5 ½" X 5 ½" squares of each fabric using a 5 ½" square ruler. Fussy cut the cardinals by placing the 5 ½" square ruler over various cardinals and cutting against the ruler's edge.

32321-3M Green with Pine Cones

Eleven 5 ½" X 5 ½" squares

32324-2M Black with Holly

Seven strips 2 ½" X WOF

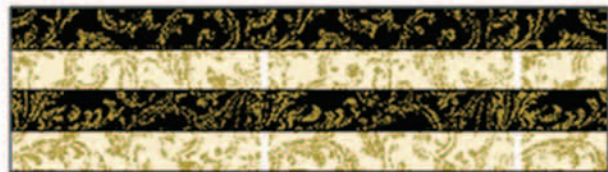
32320-4M Red Plaid

Eight strips 3 ½" X WOF

Sewing Instructions

All seam allowances are ¼ inch.

Black and Cream Frames and Checkerboard blocks



Using the black and cream strips (1 ½" X WOF) make four units as shown in the diagram. Press all seams in one direction. Subcut the units into the following:

Twelve 16" X 4 ½"
Thirty-six 1 ½" X 4 ½"



Use the thirty-six 1 ½" X 4 ½" pieces to make 9 checkerboard blocks. After sewing, they measure 4 ½" X 4 ½".



Poinsetta Promenade

By Betty New

Page 3

Snowball Blocks



Make eleven of each block shown using the 5 1/2" squares and the one hundred seventy-six 1 1/2" squares. Mark a diagonal line on the wrong side of each 1 1/2" square. With right sides together, place a 1 1/2" square in the corners of the 5 1/2" square aligning raw edges. Stitch on the diagonal line. Press the small square towards the corner, lift and trim away the excess fabric underneath leaving a 1/4" seam allowance.

Square-in-a-Square Blocks



Make four of each block.

Black and Cream Square-in-a-Square: Use four 2 1/2" black squares and sixteen 1 1/2" cream squares. Mark a diagonal line on the wrong side of each 1 1/2" square. With right sides together, place a cream square on the black square in the corner and align the raw edges. Stitch on the diagonal line. Press the small square towards the corner, lift and trim away excess fabric underneath leaving a 1/4" seam allowance. Repeat process with all corners.

Red and Cream Square-in-a-Square: Use four 3 1/2" red squares and sixteen 2" squares. Repeat the process as with the Black and Cream Square-in-a-Square blocks.

Strip Borders

Red border: Stitch the 3" strips end to end using a bias seam. Then cut two 3" X 43 1/2" and two 3" X 48 1/2".

Cream borders: Stitch the 1 1/2" strips end to end using a bias seam. Then cut the following:

- Two 1 1/2" X 48 1/2"
- Two 1 1/2" X 50 1/2"
- Two 1 1/2" X 60 1/2"
- Two 1 1/2" X 62 1/2"
- Two 1 1/2" X 66 1/2"
- Two 1 1/2" X 68 1/2"



Poinsetta Promenade

By Betty New

Page 4



Strip Borders

Red plaid border: Stitch the 3 1/2" strips end to end using a bias seam and matching the plaids. Before stitching, fold one end of a strip along the diagonal plaid design, press it, and find a place to match and align it to the next plaid strip. Use a very thin line of white school glue and glue in place along the fold line. Press to dry the glue. Open the fabrics and stitch in the fold. Open the seam and trim away excess fabric. Press the seam open. The plaid should be perfectly matched. Then cut four 3 1/2" X 68 1/2".

Assembling the Quilt Top



Poinsetta Promenade

By Betty New

Page 5



Refer to the diagram as needed for the following steps.

Center Panel

- Attach 3 checkerboard blocks to two strip sets (16" X 4 1/2"). Make three of these units.
- Attach a black and a cream 16" square with a strip set. Add a strip set to each side. Make two of these units.
- Connect all units.
- Attach the red borders to the sides first, and then to the top and bottom of the center panel. Press seams toward the red border.
- Attach cream strips to each side, and then to the top and bottom of the red borders. Press toward the cream border.

Snowball Blocks

- Refer to the diagram for placement and sew 10 blocks in a vertical row. Press seams OPEN to reduce bulk. Make two of these units and attach them to the sides of the cream border. Press seams toward the cream border.
- Refer to the diagram for placement and sew 12 snowball blocks in a horizontal row. Press seams OPEN to reduce bulk. Make two of these units and attach them to the top and bottom of the cream border.
- Add a cream border to the sides of the snowball blocks and then to the top and bottom. Press seams toward the cream border.

Black Border with Square-in-a-Square

- Attach a black border strip to each side of the quilt. Press toward the black.
- Sew a Square-in-a-Square block to each end of the remaining black border strips. Attach these borders to the top and the bottom of the quilt. Press seams toward the black.
- Add a cream border strip to each side of the quilt. Press toward the cream.
- Add a cream border strip to the top and the bottom of the quilt. Press toward the cream.

Red Plaid Border with Square-in-a-Square

- Attach a red plaid border to each side of the quilt. Press toward the red plaid.
- Sew a Square-in-a-Square block to each end of the remaining plaid border strips. Attach these borders to the top and the bottom of the quilt. Press seams toward the plaid.

Quilting and Finishing

Layer, baste, and quilt. Bind with remaining cream mistletoe berry fabric. **ENJOY!**

Be sure to visit www.windhamfabrics.com to see the complete collection and to download this and other Free Projects

WINDHAM FABRICS