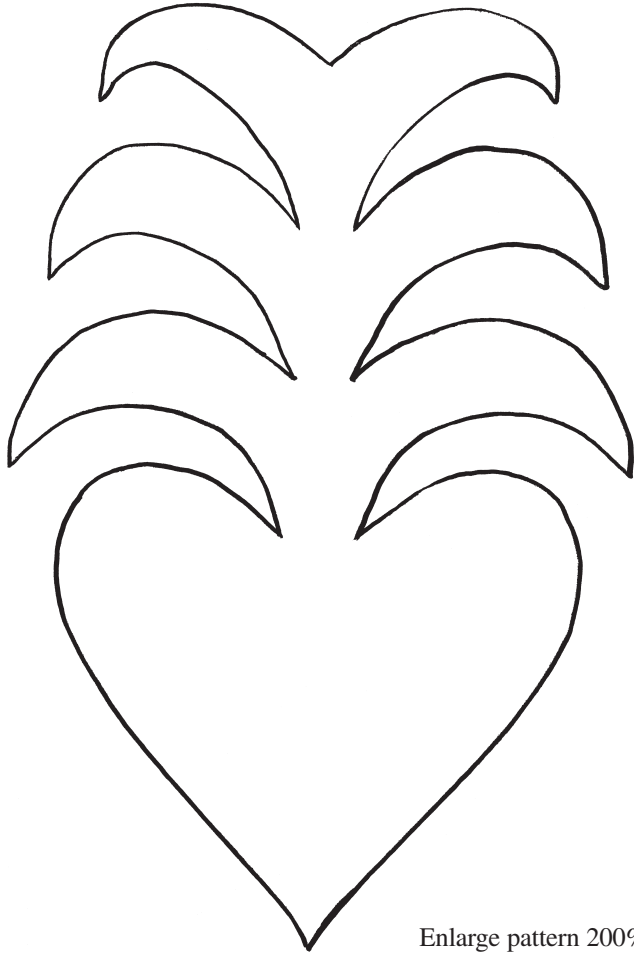


Center Medallion Pattern



Enlarge pattern 200%

Be sure to visit www.windhamfabrics.com to see the complete collection and download more FREE projects.

 **Windham Fabrics**
a division of Baum Textile Mills

812 Jersey Ave • Jersey City, NJ 07310 • 201.659.0444 • FAX: 201.659.9719 • info@windhamfabrics.com

P R O J E C T

Pennsylvania Scherenschnitte

by Jill Reid



Featuring fabrics from the
Lancaster Heritage Collection by Patti Harants

 **Windham Fabrics**
a division of Baum Textile Mills

Pennsylvania Scherenschnitte

by Jill Reid

QUILT SIZE: 56" x 56"

Fabric Requirements:

From Lancaster Heritage fabrics by Windham Fabrics.
Fat Eights of about a dozen of your favorite fabrics from this line for the pieced blocks

3/4 yd. #25541-46 for the 14 alternate solid blocks

2/3 yd. #25536-10 for background of center medallion

1/4 yd. #25538-4 for center appliqué

3/4 yd. #25544-8 for inner border (if not pieced)

1-1/4 yds. #25535-10 for large top and bottom panel

3-1/2 yds. #25542-46 for backing

1/2 yd. #25544-8 for binding

Cutting and Construction

Center medallion:

Cut one 21-1/2" square of #25536-10 for background.

Using your favorite fusible web, trace the appliqué pieces and iron onto background square, folding your background square into quarters to help center the appliqué pieces accurately.

Stitch around the appliqué pieces with invisible monofilament thread, using a small zig zag stitch, to secure them.

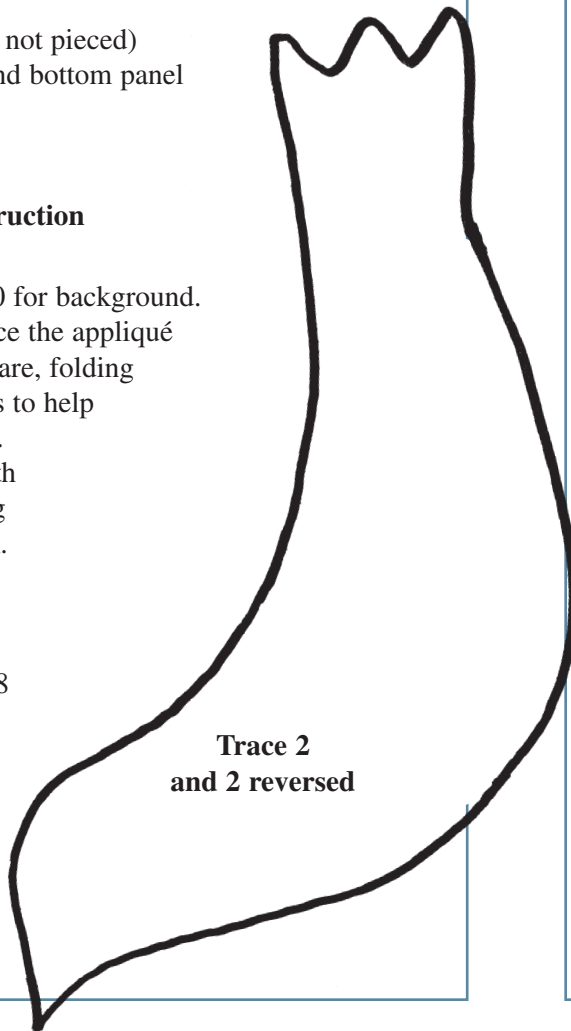
Inner Border:

Cut (2) 2" x 21-1/2" &

(2) 2" x 24-1/2" strips from #25544-8 and add to center medallion.

Center Medallion Pattern

Pattern is actual size



Trace 2
and 2 reversed

Shoo Fly blocks

Make 8 blocks. For each 8" finished Shoo Fly block, cut:
(4) 3-1/4" squares & (2) 4-1/4" squares from light fabrics;
(1) 3-1/4" square & (2) 4-1/4" squares from dark fabrics.

To make the four half-square triangle squares for this block, draw a diagonal line on the wrong side of each 4-1/4" light square. Place a light and dark square, right sides together, and sew 1/4" on each side of the drawn line. Cut it apart on the drawn line and press open the two blocks, pressing toward the dark fabric.

*(*Note: there are a couple of Shoo Fly blocks that reverse the light and dark fabrics).*



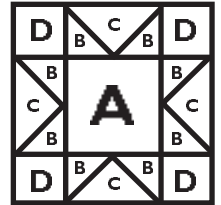
Sawtooth Star blocks:

Make 8 blocks. For each 8" finished Sawtooth Star block, cut:

From dark fabrics: A = (1) 4 1/2" square;

B = (4) 2-7/8" squares, cut once on diagonal.

From light fabrics: C = (1) 5-1/4" square, cut twice on the diagonal; D = (4) 2-1/2" squares.



Alternate blocks:

Cut (14) 8-1/2" squares from #25541-46.

Top & Bottom Panel:

from #25535-10, cut (2) 8-1/2" x 40-1/2" strips.

**Note: I "fussy cut" the stripe so that it was centered.*

Assemble blocks per photo.

Layer, quilt and bind your finished project.