

"nursery time"

Designed by (c) Erin Witt Designs

Featuring the Kit n' Kaboodle Collection by Whistler Studios

Featuring 3 fabrics from NEW! Windham Flannel Basics

Size: 44" x 44"



Feel free to download additional copies of this and other projects by visiting
our website: www.windhamfabrics.com

WINDHAM FABRICS

812 Jersey Ave ~ Jersey City, NJ 07310 ~ 201.659.0444 ~ FAX: 201.659.9719
www.windhamfabrics.com email: retail@windhamfabrics.com

"nursery time"

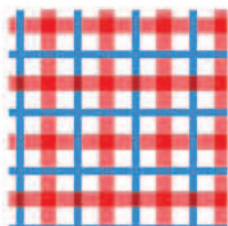
Designed by (c) Erin Witt Designs

Featuring the Kit n' Kaboodle Collection by Whistler Studios

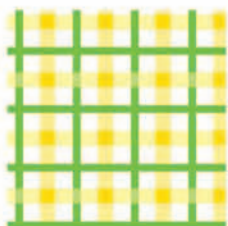
Featuring 3 fabrics from NEW! Windham Flannel Basics

Size: 44" x 44"

This makes a cuddly floor quilt that will be great on a cold evening for your toddler to play on!



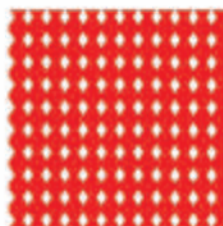
33313-3



33313-4



33334K-3



33314-3



33334K-1



33312-1



33334-5



33337-X



33337-6

Fabric Requirements

Windham Kit n' Kaboodle Collection --

33312-1 Blue 1/2 Yard – allow additional yardage if fussy cutting

33313-4 Yellow 1/4 Yard

33314-3 Red 1 1/2 Yard

33334K-4 Pink-Black 1/4 Yard

33334K-3 Blue-Black 1/2 Yard

33313-3 Red Plaid 1/2 Yard

Windham Flannel Basics Collection --

33337-6 Yellow 1/2 Yard

33334-5 Green 3/8 Yard

33337-X Multi 1/2 Yard

Cutting Directions

Windham Kit n' Kaboodle Collection

33312-1 Blue 1/2 Yard

Note: May be fussy cut, if desired.

Cut (24) 3 1/2" X 3 1/2" squares.

#33313-4 Yellow 1/4 Yard

Cut (4) 3 1/2" X 3 1/2" squares.

Cut (20) 2" X 2" squares for Unit 1's.

WINDHAM FABRICS

"nursery time"

Page 2

#33314-3 Red 1 1/2 Yard

Cut (2) 2" X 26" strips for sides of first border.

Cut (2) 2" X 29" strips for top and bottom of first border.

Cut (4) 2" X 2" squares for corner blocks of second border.

Cut (4) 3 1/2" X 3 1/2" squares for corner blocks of third border.

Cut (20) 2" X 2" squares for Unit 1's.

Cut (8) 2 1/2" X 2 1/2" squares. Cut in half once diagonally to make (16) triangles for corner blocks of fourth border.

Cut 2 1/2" strips and piece as necessary to make 195" of binding.

#33334K-4 Pink-Black 1/4 Yard

Cut (2) 5 1/4" X 5 1/4" squares. Cut in half once diagonally to make (4) triangles for center block.

#33334K-3 Blue-Black 1/2 Yard

Cut (4) 3 1/2" X 32" strips for third border.

Cut (2) 3 1/2" X 3 1/2" squares for center block.

#33313-3 Red Plaid 1/2 Yard

Cut (4) 3 1/2" X 38" strips for fourth border.

Windham Flannel Basics Collection

#33337-6 Yellow Flannel 1/2 Yard

Cut (4) 2" X 29" strips for second border.

Cut (4) 2 5/8" X 2 5/8" squares for corner blocks of fourth border.

#33334-5 Green Flannel 3/8 Yard

Cut (8) 3" X 3" squares. Cut in half once diagonally to make (16) triangles.

Cut (4) 5 1/2" X 5 1/2" squares. Cut in half twice diagonally to make (16) triangles.

#33337-X Multi Flannel 1/2 Yard

Cut (8) 5 1/4" X 5 1/4" squares. Cut in half once diagonally to make (16) triangles.

Instructions

1. Unit 1



Referring to diagram at left, make (10) Unit 1's, using (2) yellow squares and (2) red squares for each Unit 1.

2. Unit 2



Referring to diagram at left, make (4) Unit 2's, using (2) blue squares and (2) Unit 1's.

Make (1) additional Unit 2 substituting blue/black squares for the blue squares.

WINDHAM FABRICS

"nursery time"

Page 3

3. Unit 3



Referring to diagram at left, make (4) Unit 3's using (4) multi flannel triangles and (1) Unit 2.

Make (1) additional Unit 3 using the odd colored Unit 2 and substituting pink/black triangles for the multi flannel triangles.

Press and trim.

Each block should measure 9" X 9."

4. Unit 4



Referring to diagram at left, assemble (4) blue squares, (1) yellow square, (4) large green flannel triangles, and (4) small green flannel triangles.

Repeat to make (4) blocks.

Press and trim.

Each block should measure 9" X 9."

5. Referring to quilt picture, assemble (5) Unit 4's and (4) Unit 3's. Quilt should now measure 26" X 26".
6. Sew (1) red 2" X 26" strip to each side of quilt center.
Sew (1) 2" X 29" red strip to the top and (1) 2" X 29" red strip to the bottom of quilt center.
Quilt should now measure 29" X 29".
7. Sew (1) yellow flannel 2" X 29" strip to each side of quilt center.
Sew (1) 2" X 2" red square to each end of the remaining (2) 2" X 29" yellow flannel strips.
Sew (1) of these strips to the top, and (1) to the bottom of quilt center.
Quilt should now measure 32" X 32".
8. Sew (1) blue/black 3 1/2" X 32" strip to each side of quilt center.
Sew (1) 3 1/2" red square to each end of the remaining (2) 3 1/2" X 32" blue/black strips.
Sew (1) of these strips to the top, and (1) to the bottom of quilt center.
Quilt should now measure 38" X 38".
9. Sew (1) red plaid 3 1/2" X 38" strip to each side of quilt center.
Sew (1) red triangle to each side of (4) yellow flannel 2 5/8" squares to make corner blocks of fourth border. Press and trim this unit to 3 1/2" X 3 1/2".
Sew (1) one pieced corner block to each end of the remaining (2) 3 1/2" X 38" red plaid strips.
Sew (1) of these strips to the top, and (1) to the bottom of quilt center.
Quilt should now measure 44" X 44".

Quilt and bind, as desired.

ENJOY!!

Always look on our website before starting your project to see if there are any updates or corrections

Be sure to visit www.windhamfabrics.com to see the complete collection and to download this and other Free Projects

WINDHAM FABRICS