



# "Nature Inspired"

Designed by Betty New  
Featuring the Nature Inspired Collection by Tracie Lyn Huskamp  
Size: 58.5" x 70.5"



WINDHAM *W* FABRICS

812 Jersey Ave ~ Jersey City, NJ 07310 ~ 201.659.0444 ~ FAX: 201.659.9719  
[www.windhamfabrics.com](http://www.windhamfabrics.com) email: [retail@windhamfabrics.com](mailto:retail@windhamfabrics.com)







# “Nature Inspired”

Designed by Betty New  
Featuring the Nature Inspired Collection by Tracie Lyn Huskamp  
Size: 58.5” x 70.5”  
Skill Level: Intermediate

## Yardage Requirements

Color	SKU	Description	Yardage
Multi-color Panel	32113-X	Multi Panel of Birds	1 + 3/8
Cream	32117-3	Swirls	7/8
Gold	32117-6	Swirls	1/4
Brown	32115-4	Yellow Butterflies	1/4
Cream	32115-3	Blue Butterflies	1/4
Turquoise	32119-7	Branches and Leaves	1/2
Black	32119-5	Branches and Leaves	1/4
Turquoise	32120-7	Sunflowers	1/8
Black	32120-5	Sunflowers	1/8
Tan	32114-2	Handwriting	1
Blue	32114-1	Handwriting	1/2
Brown	32116-4	Square Tiles	3 (Includes binding)



32113-X

Backing: 4 + 1/2 yards

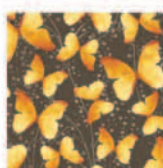
Additional Supplies: Batting, light weight fusible webbing, brown fuzzy yarn (optional), a 6 1/2” square ruler.



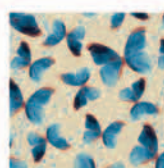
32117-3



32117-6



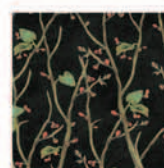
32115-4



32115-3



32119-7



32119-5



32120-7



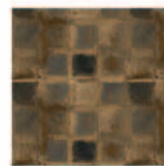
32120-5



32114-2



32114-1



32116-4

## Cutting Instructions:

Starch all fabrics with heavy starch before cutting to ensure precise piecing.

All circles will require light weight fusible on the back of the fabric before cutting and will be “fussy cut” for raw edge appliqué.

### • Multi-color panel of birds:

One 21 1/2” X 33 1/2”

Fifteen 3” circles—Fuse light weight fusible to the back of the fabric BEFORE cutting.

FUSSY CUT around 15 birds and/or flowers for raw edge appliqué.

### • Cream Swirls

Four 7 1/2” X 7 1/2”

Eight 2 1/2” X WOF (width of fabric)

### • Gold Swirls

Four 4 1/2” X 4 1/2”



# “Nature Inspired”

Page 2



- **Brown /Yellow Butterflies**  
Two 3 1/2" X 12 1/2"  
Four 3" circles—Fuse light weight fusible to the back of the fabric BEFORE cutting.
- **Cream/Blue Butterflies**  
Two 3 1/2" X 12 1/2"  
Four 3" circles—Fuse light weight fusible to the back of the fabric BEFORE cutting.
- **Turquoise Branches and Leaves**  
Nine 1 1/2" X 4 1/2"  
Nine 1 1/2" X 6 1/2"  
Five 4 1/2" X 4 1/2"
- **Black Branches and Leaves**  
Four 4 1/2" X 4 1/2"
- **Turquoise Sunflowers**  
Five 3" circles—Fuse light weight fusible to the back of the fabric BEFORE cutting. Position the circle for fussy cutting the sunflowers.
- **Black Sunflowers**  
Five 3" circles—Fusible attached and fussy cut.
- **Tan with Handwriting**  
Nine 1 1/2" X 4 1/2"  
Nine 1 1/2" X 6 1/2"  
Five 4 1/2" X 4 1/2"  
Eight 7 1/2" X 7 1/2"
- **Blue with Handwriting**  
Fifteen 1 1/2" X 4 1/2"  
Fifteen 1 1/2" X 6 1/2"
- **Brown Square Tile**  
Four 7 1/2" X 7 1/2"  
Eight 2" X 12 1/2"  
Two 2" X 24 1/2"  
Two 2" X 33 1/2"  
Eight 3 1/2" X WOF  
Two 7" X WOF—Subcut the strips into one hundred thirty-two 3/8" (approximately) pieces without ruler so to resemble “twigs.” Fuse fusible to the back of the fabric BEFORE cutting the twigs.

## Sewing Instructions:

All seams are 1/4".

### Center Section



Center Panel: Frame the panel by sewing two 2" X 33 1/2" strips to each side and the two 2" X 24 1/2" strips to the top and the bottom. Press seams toward the dark brown frames.

The center panel should now measure 24 1/2" X 36 1/2".



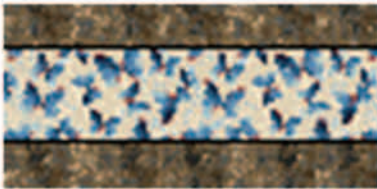


# "Nature Inspired"

Page 3

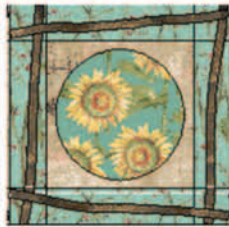


## Strip Panels



**Make four strip panels:** Attach two 2" X 12 1/2" brown strips to each side of the 3 1/2" X 12 1/2" **blue butterflies** (shown) and the **yellow butterflies** (not shown). Press seams toward the dark brown. The strips now measure 6 1/2" X 12 1/2".

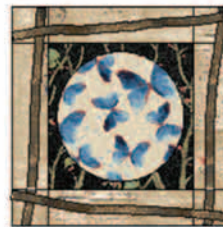
## Blocks with Circles



**Make five** using turquoise sunflowers, tan squares, and turquoise strips.



**Make five** using black sunflowers, turquoise squares, and tan strips.



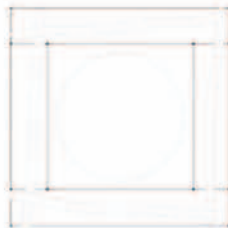
**Make four** using blue butterflies, black squares, and tan strips.



**Make four** using yellow butterflies, gold squares, and turquoise strips.



**Make fifteen** using birds or flowers from the panel, brown squares, and blue strips.



**Construction diagram:** One circle, one square, four strips, and four "twigs."

**CONSTRUCTION:** Fuse the 3" circles to the appropriate 4 1/2" squares as shown. Couch brown fuzzy yarn around the edge of the circles (if desired) or use any decorative stitch to secure the edges.

Attach a 1 1/2" X 4 1/2" strip to each side of the square; then attach 1 1/2" X 6 1/2" strips to the top and bottom. Press seams toward the outer edge.

Place and fuse four "twigs" on top the blocks as shown. Trim extra length from twigs. Secure the edges of the twigs with a small zig-zag stitch using matching thread or invisible thread.

## Half-square Triangle Blocks



**Make seven** using four brown and four tan 7 1/2" squares. (You will have one extra after sewing.)



**Make eight** using four tan and cream 7 1/2" squares.

**CONSTRUCTION:** Draw a diagonal line on the back of the eight tan 7 1/2" squares. Place the tan squares on top of the four brown squares and four cream squares with right sides together. Use the diagonal line as a guide and stitch 1/4" away on both sides of the line. Cut on the line and press the seams open. Trim each block down to size (6 1/2" X 6 1/2") using a 6 1/2" square ruler.





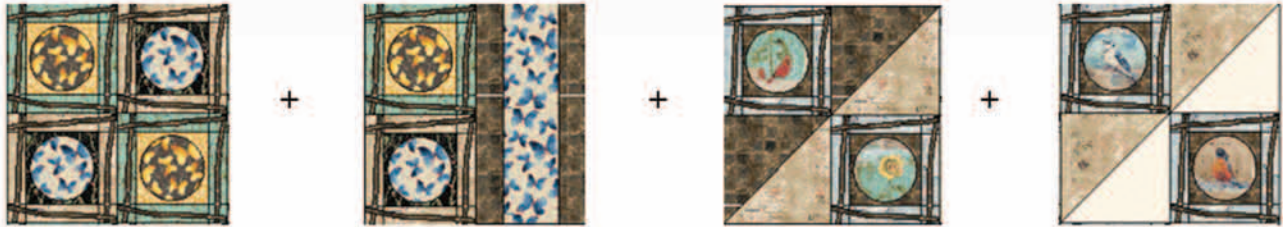
# "Nature Inspired"

Page 4



## Top Section

For precise and easy construction, sew by two's, then four's, etc.



## Middle Section



## Bottom Section



Join the three major sections of the quilt together. Press seams.

WINDHAM FABRICS





# "Nature Inspired"

Page 5



## ADDING BORDERS:

### • Cream Borders

Make four cream borders by joining the 2 1/2" X WOF strips by two's. A bias seam to join them looks best.

Lay two cream strips horizontally across the center body of the quilt and trim for correct width. Mark centers of the strips. Attach one strip at the top and one at the bottom of the quilt carefully matching centers of the strips to the center of the quilt. Press all seams toward the outside edge. Repeat the process vertically.

### • Brown Borders

Follow the same directions as for making the cream borders using the brown 3 1/2" X WOF strips.

**Backing:** Cut the 4 1/2 yard piece you chose for backing into two 2 1/4 yard pieces. Starch and press each piece. Remove the selvedge and join the pieces together along what was the selvedge edge. Press the seam open. Layer the backing, batting, and quilt top and secure with pins or basting spray.

**Binding and Quilting:** The remaining brown fabric is for binding. Use your favorite methods for attaching binding and for quilting.

## ENJOY!

*With Nature Inspired Tracie Huskamp has captured the vivid glory of nature on fabric as she has done in her expressions of mixed media.*

*Nature Inspired is Tracie's premier quilting collection and its release coincides with the publication of her book of the same name "Nature Inspired" (Quarry 2009).*

Visit: [www.thereddoor-studio.blogspot.com](http://www.thereddoor-studio.blogspot.com)



Be sure to visit [www.windhamfabrics.com](http://www.windhamfabrics.com) to see the complete collection and to download this and other Free Projects

**WINDHAM FABRICS**