

My Little Pony

Designed by (c) Erin Witt Designs
Featuring the Kit n' Kaboodle Collection by Whistler Studios
Size: 54" x 54"



Feel free to download additional copies of this and other projects by visiting our website: www.windhamfabrics.com

WINDHAM FABRICS

812 Jersey Ave ~ Jersey City, NJ 07310 ~ 201.659.0444 ~ FAX: 201.659.9719
www.windhamfabrics.com email: retail@windhamfabrics.com

My Little Pony

Designed by (c) Erin Witt Designs

Featuring the Kit n' Kaboodle Collection by Whistler Studios

Size: 54" x 54"

Fabric Requirements

Windham Kit n' Kaboodle Collection --
33313-4 Yellow Plaid 1/2 Yard
33312-1 Blue 1/2 Yard
33313-3 Red Plaid 1 Yard
33314-3 Red 2 Yard (includes binding)
33334K - 3 Blue-Black 1/2 Yard
33311-1 Blue Alphabet Blocks 3/4 Yard

Windham Flannel Basics --
33337-X Multi 1/2 Yard
33336-X Multi 1/4 Yard

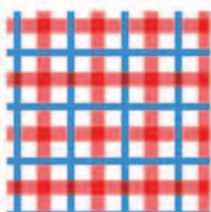
Windham 1930's Solids --
25031 Periwinkle Blue 1/4 Yard
Black scrap fabric for eye



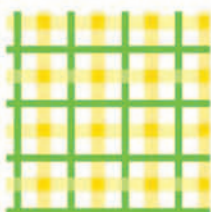
33311-1



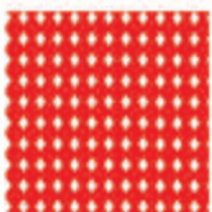
33312-1



33313-3



33313-4



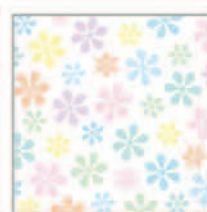
33314-3



33334K-3



33337-X



33336-X



25031

Cutting Directions

Windham Kit n' Kaboodle Collection

33313-4 Yellow Plaid

Cut (4) 2 3/4" squares for corners in Eighth Border
Cut (12) 3 1/2" squares for Second Border Blocks.
Cut (48) 2 1/2" squares for Second Border Blocks.

33312-1 Blue

Cut (2) 3 1/2" X 34 1/2" strips for sides of fourth border.
Cut (2) 3 1/2" X 40 1/2" strips for top and bottom of fourth border.

33313-3 Red Plaid

Cut (4) 3 1/2" X 48 1/2" strips for eighth border.

33314-3 Red

Cut (2) 1 1/2" X 48 1/2" strips for top and bottom of seventh border.
Cut (2) 1 1/2" X 46 1/2" strips for sides of seventh border.

Cut (2) 1 1/2" X 42 1/2" strips for top and bottom of fifth border.
Cut (2) 1 1/2" X 40 1/2" strips for sides of fifth border.

Cut (2) 1 1/2" X 34 1/2" strips for top and bottom of third border.
Cut (2) 1 1/2" X 32 1/2" strips for sides of third border.

Cut (2) 2" X 16 1/2" strips for top and bottom of first border.
Cut (2) 2" X 13 1/2" strips for sides of first border.

WINDHAM FABRICS

My Little Pony

Page 2

33314-3 Red (continued)

Cut 2 ½" strips and piece as necessary to make 220" of binding.

Cut (48) 2 ½" squares for Second Border Blocks.

Cut (8) 2 ½" squares. Cut once diagonally to make (16) triangles for corners in Eighth border blocks.

33334K - 3 Blue-Black

Cut (48) 2 ½" squares for Unit 1.

Cut (24) 3" squares. Cut once diagonally to make (48) triangles for Unit 1.

33311-1 Blue Alphabet Blocks

Cut (2) 2 ½" X 42 ½" strips for sides of sixth border.

Cut (2) 2 ½" X 46 ½" strips for top and bottom of sixth border.

Windham Flannel Basics --

33337-X Multi

Cut (1) 15" square for center of quilt.

33336-X Multi

Cut appliqué templates (last pages) and assemble for pony - Templates 1, 2, 3.

Windham 1930's Solids --

25031 Periwinkle Blue

Cut appliqué templates following the periwinkle blue portions on templates for eye, hoofs, mane (5&6) and tail (4)

Black Scraps - cut out eye shape

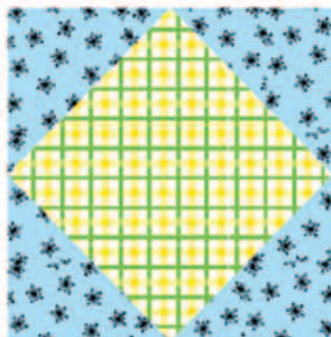
Instructions

1. Center Square

Using appliqué method of choice, sew templates for pony onto 15" square. Stitch using black embroidery thread around the outside of the pony, hooves and to make tail.

Press and trim to 13 ½" square.

2. Unit 1.



Sew a blue-black triangle to each side of a 3 ½" yellow plaid square.

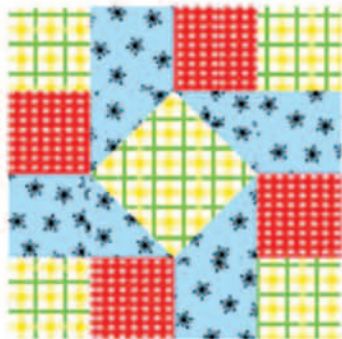
Press and trim unit to 4 ½".

Repeat to make (12).

My Little Pony

Page 3

3. Second Border Blocks



Referring to diagram at left, assemble (1) Unit 1 made above, (4) yellow plaid squares, (4) red squares, and (4) blue-black squares.

Press and trim unit to 8 1/2".

Repeat to make (12) Second Border Blocks.

Sew (2) strips of (2) blocks together for sides of border two.
Sew (2) strips of (4) blocks together for top and bottom of border two.

4. Border One

Sew (1) 2" X 13 1/2" red strip to each side of quilt center.

Sew (1) 2" X 16 1/2" red strip to top and (1) 2" X 16 1/2" red strip to bottom of quilt center.

Quilt should now measure 16 1/2" square.

5. Border Two

Sew (1) strip of (2) blocks to each side of quilt center.

Sew (1) strip of (4) blocks to top and one set to bottom of quilt center.

Quilt should now measure 32 1/2" square.

6. Border Three

Sew (1) 1 1/2" X 32 1/2" red strip to each side of quilt center.

Sew (1) 1 1/2" X 34 1/2" red strip to top and (1) 1 1/2" X 34 1/2" red strip to bottom of quilt center.

Quilt should now measure 34 1/2" square.

7. Border Four

Sew (1) 3 1/2" X 34 1/2" blue strip to each side of quilt center.

Sew (1) 3 1/2" X 40 1/2" blue strip to top and (1) 3 1/2" X 40 1/2" blue strip to bottom of quilt center.

Quilt should now measure 40 1/2" square.

8. Border Five

Sew (1) 1 1/2" X 40 1/2" red strip to each side of quilt center.

Sew (1) 1 1/2" X 42 1/2" red strip to top and (1) 1 1/2" X 42 1/2" red strip to bottom of quilt center.

Quilt should now measure 42 1/2" square.

9. Border Six

Sew (1) 2 1/2" X 42 1/2" blue alphabet blocks strip to each side of quilt center.

Sew (1) 2 1/2" X 46 1/2" blue alphabet blocks strip to the top, and (1) 2 1/2" X 46 1/2" blue alphabet blocks strip to the bottom of quilt center.

Quilt should now measure 46 1/2" square.

My Little Pony

Page 4

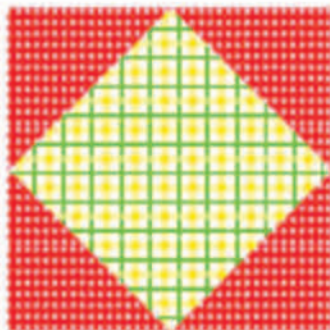
10. Border Seven

Sew (1) 1 1/2" X 46 1/2" red strip to each side of quilt center.

Sew (1) 1 1/2" X 48 1/2" red strip to the top, and (1) 1 1/2" X 48 1/2" red strip to the bottom of quilt center.

Quilt should now measure 48 1/2" square.

11. Border Eight



Sew a red triangle to each side of a 2 3/4" yellow plaid square to create a square in a square unit.

Press and trim unit to 3 1/2" square.

Repeat to make (4).

Sew (1) square in a square unit created above to each side of a 3 1/2" X 48 1/2" red plaid strip. Repeat once.

Sew (1) 3 1/2" X 48 1/2" red plaid strip to each side of quilt center.

Sew (1) red plaid strip with blocks on each end to top and (1) red plaid strip with blocks on each end to bottom of quilt center.

Quilt should now measure 54 1/2" square.

Quilt and bind, as desired.

ENJOY!!



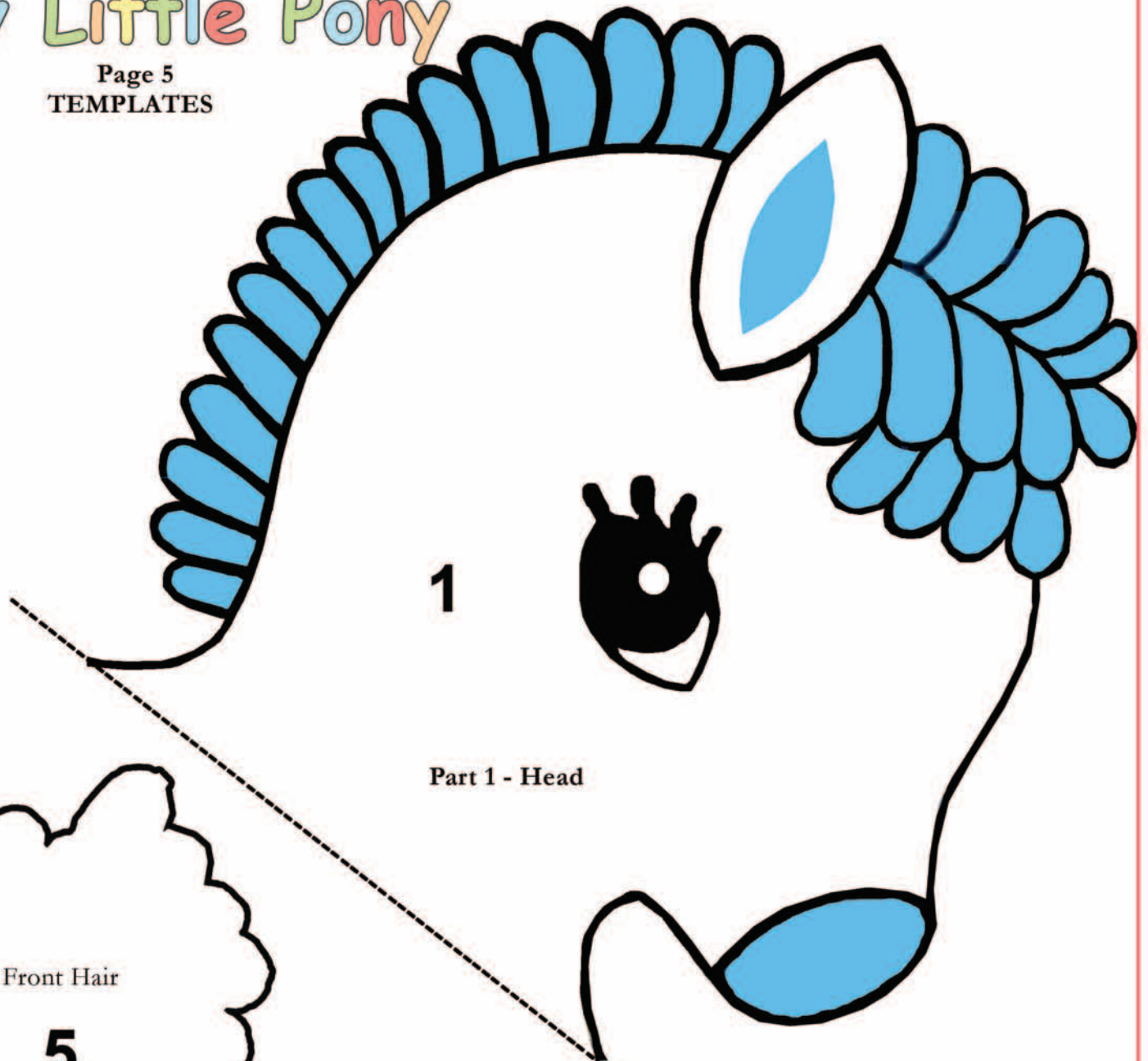
Always look on our website before starting your project to see if there are any updates or corrections

Be sure to visit www.windhamfabrics.com to see the complete collection and to download this and other Free Projects

WINDHAM FABRICS

My Little Pony

Page 5
TEMPLATES



1

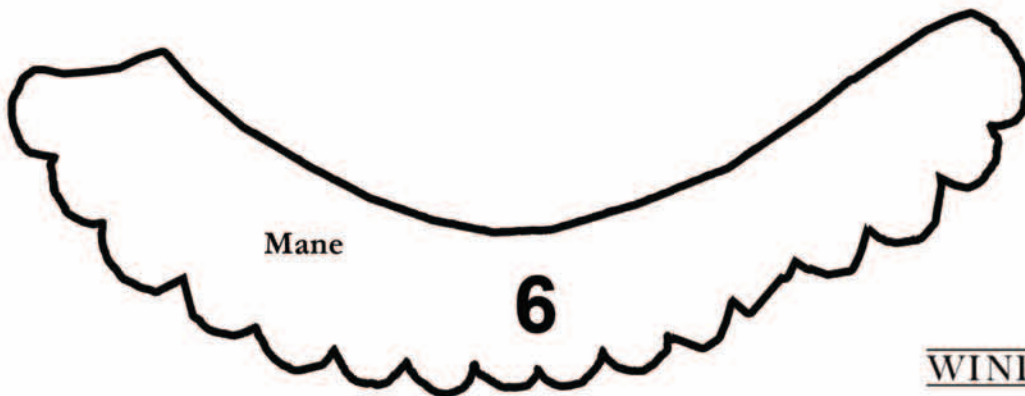
Part 1 - Head



Front Hair

5

Rotate into correct
position

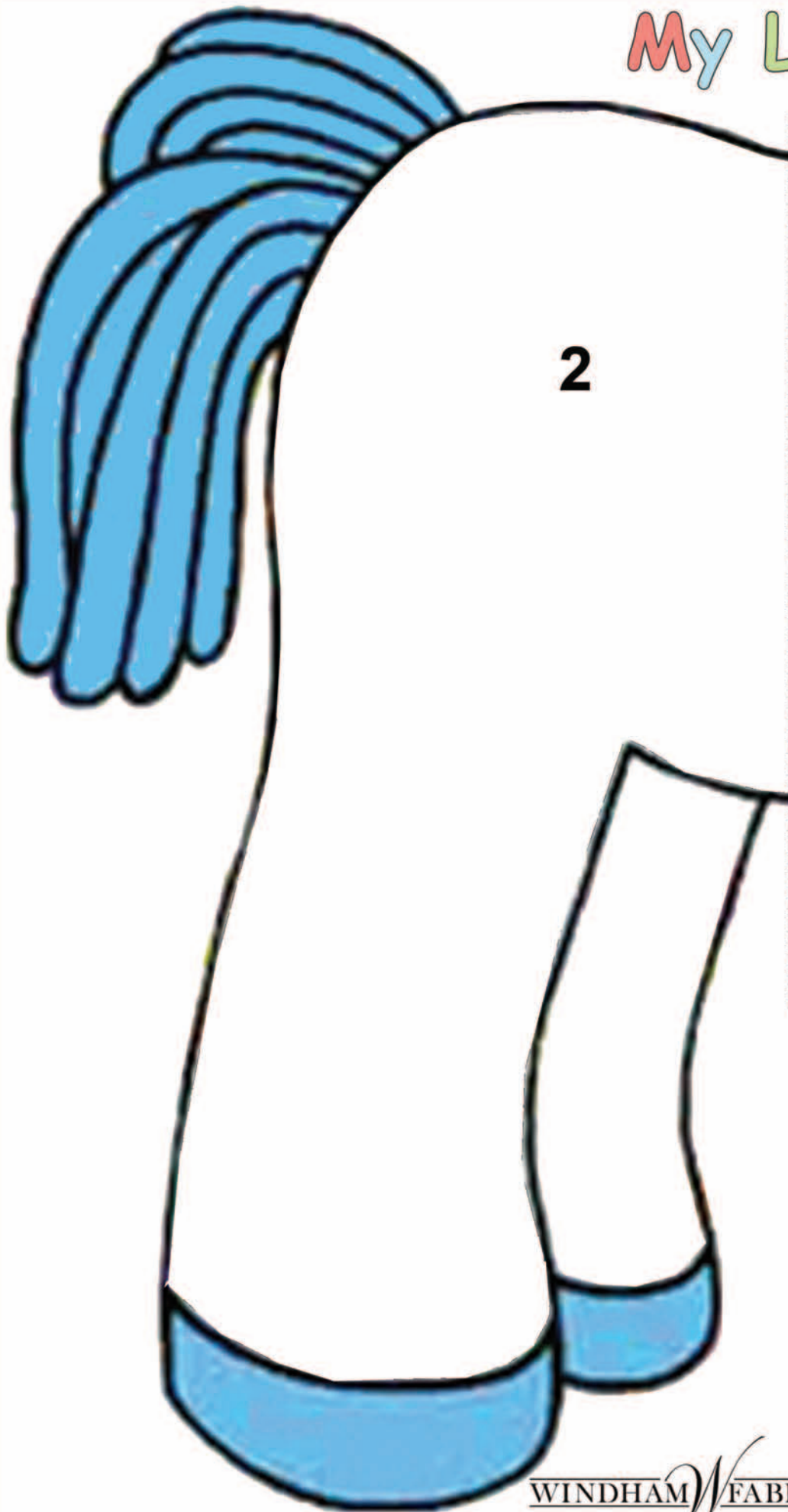


Mane

6

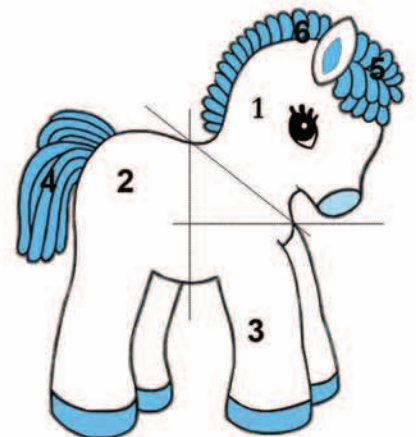
My Little Pony

Page 6
TEMPLATES



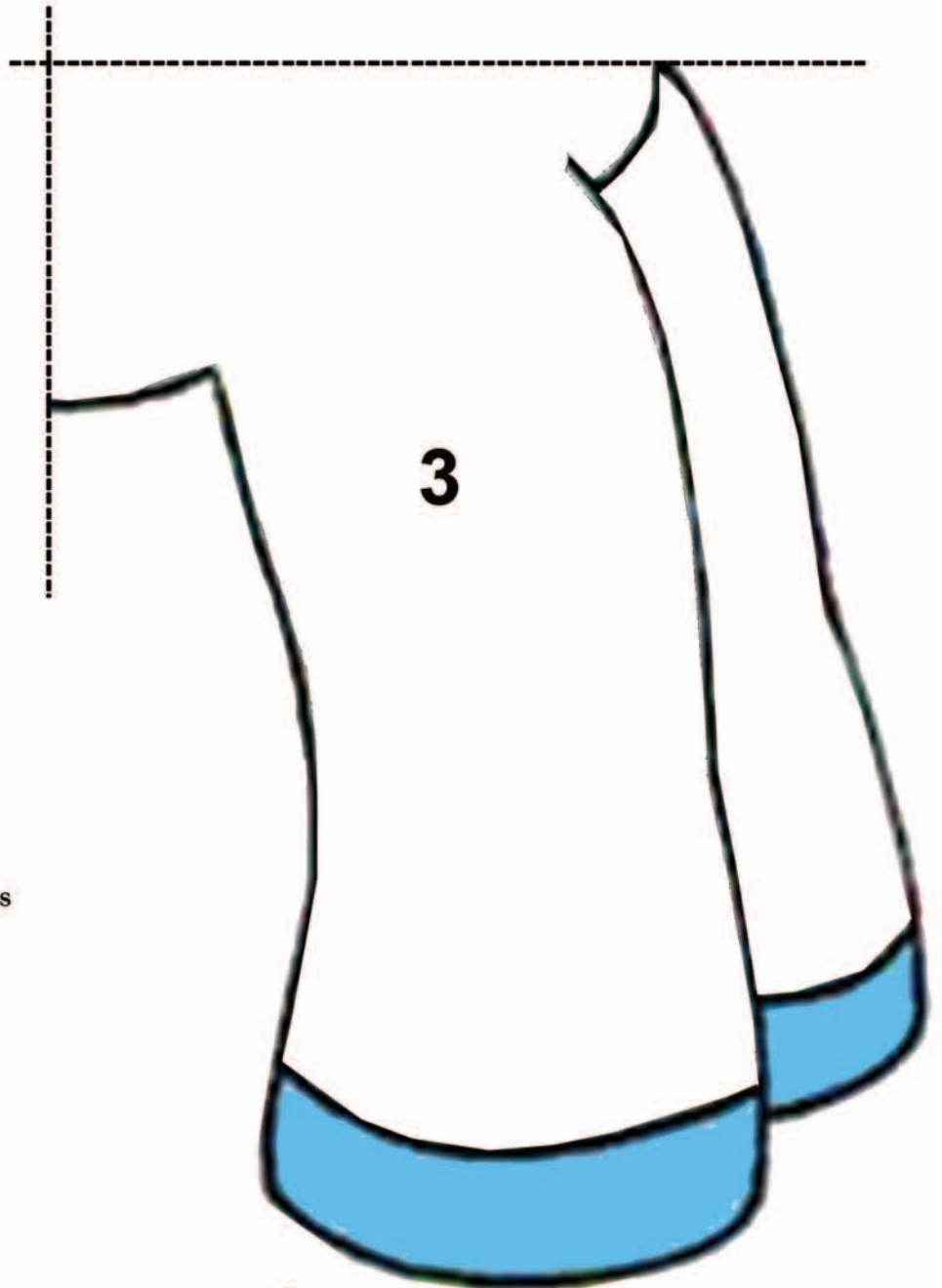
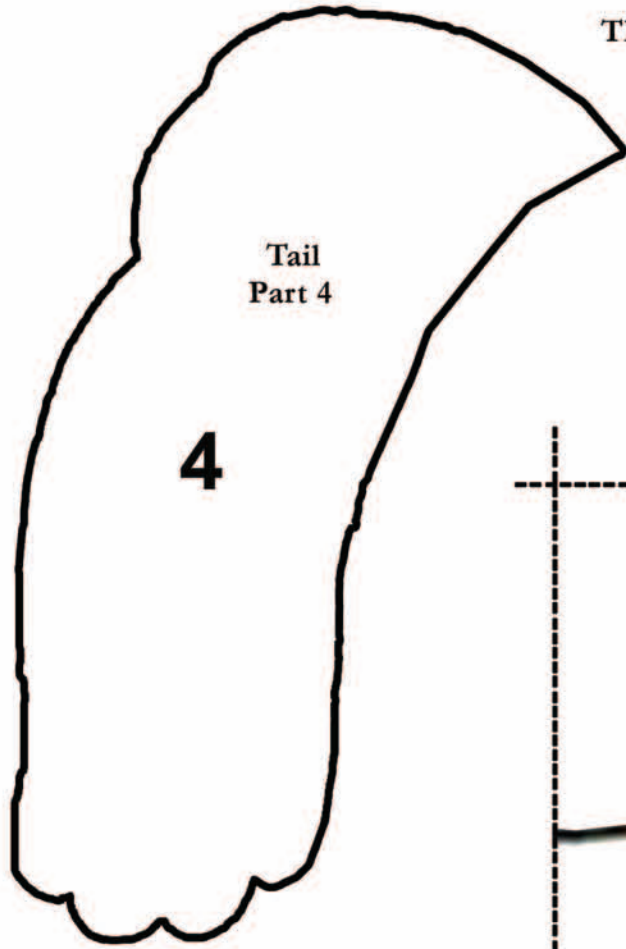
Back Legs Part 2

Assembly of pony



My Little Pony

Page 7
TEMPLATES



Part 3 - Front Legs