



Mod Blossoms

An original Design by Sue Pickering
Featuring the Blossom Collection by Whistler Studios
Size: 63" x 85"



Feel free to download additional copies of this and other projects by visiting
our website: www.windhamfabrics.com

WINDHAM *W* **FABRICS**

812 Jersey Ave ~ Jersey City, NJ 07310 ~ 201.659.0444 ~ FAX: 201.659.9719
www.windhamfabrics.com email: retail@windhamfabrics.com

Mod Blossoms

An original Design by Sue Pickering
Featuring the Blossom Collection by Whistler Studios
Size: 63" x 85"

These large 18" blocks with modern vases are easy to appliqué by hand machine or fusing. Surround them with small squares of all the fabrics and large corner posts, and finish it off with large bouquets. It's bright and beautiful!

Fabric Requirements

Fabric #1 33260-1 $\frac{3}{4}$ yd.
Fabric #2 33258-2 1 $\frac{1}{4}$ yd.
Fabric #3 33255-1 2 yd.
Fabric #4 33256-3 1 yd.
Fabric #5 33258-5 1 $\frac{1}{3}$ yd.
Fabric #6 33258-6 $\frac{1}{2}$ yd.
Fabric #7 33261-1 $\frac{3}{4}$ yd.
Fabric #8 33256-1 $\frac{1}{4}$ yd.
Fabric #9 33259-4 $\frac{1}{4}$ yd.
Fabric #10 33257-4 1 yd.
Fabric #11 33257-1 $\frac{1}{2}$ yd.
Fabric #12 33261-7 $\frac{1}{2}$ yd.
Fabric #13 33255-2 $\frac{1}{2}$ yd.
Backing 5 $\frac{1}{2}$ yd.



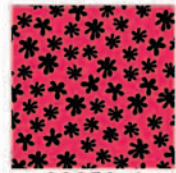
33255-2



33259-4



33257-4



33258-6



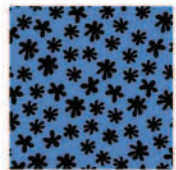
33255-1



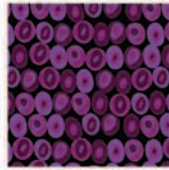
33256-3



33257-1



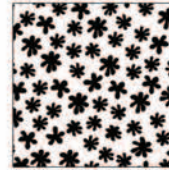
33258-5



33261-1



33260-1



33258-2

Cutting Directions

Fabric #1 - Cut six rectangles 6 $\frac{1}{2}$ " X 18 $\frac{1}{2}$ " (vase table)

Fabric #2 - Cut six rectangles 12 $\frac{1}{2}$ " X 18 $\frac{1}{2}$ " (wall behind vases)

Fabric #3 - Cut seven strips 6 $\frac{1}{2}$ " wide across the width of the fabric (WOF) these will be the outside borders. Cut one 2 $\frac{1}{2}$ " strip the (WOF). Using your favorite appliqué method cut out and prepare 3 of vase #2.

Fabric #4 - Cut eight 2 $\frac{1}{2}$ " strips (WOF). These will be the inner border.

Fabric #5 - Cut out four squares 4 $\frac{1}{2}$ ", these are the posts on the final border.

Fabric #6 - Cut out one 4 $\frac{1}{2}$ " strip and re-cut into 12 squares as setting posts for the blocks. Also cut out two 2 $\frac{1}{2}$ " strip (WOF) for use in strip piecing sashing around blocks.

Fabric #7 - Cut out two 2 $\frac{1}{2}$ " strips (WOF) for strip piecing sashing. Also cut out and prepare 3 of vase #1.

Fabric #8 - Cut out three 2 $\frac{1}{2}$ " strips (WOF) for piecing as above.

Fabric #9 - Cut out two 2 $\frac{1}{2}$ " strips (WOF) for use in sashing.

Fabric #10 - Cut out two 2 $\frac{1}{2}$ " strips (WOF) for use in sashing. Also cut out and prepare 3 of vase #3.

Fabric #11 - Cut out two 2 $\frac{1}{2}$ " strips (WOF) for use in sashing and cut out and prepare 3 of vase #3.

Fabric #12 - Cut out two 2 $\frac{1}{2}$ " strips (WOF) for use in sashing and cut out and prepare 3 of vase #1.

Fabric #13 - Cut out and prepare 3 of vase #2.

Mod Blossoms

Page 2

Sewing Directions

(all seams are 1/4" and pressed open for best results)

Blocks: Fabric #1 and #2 seam together to make an 18 1/2" square block. Using the picture of the quilt as a reference appliqué the vases to the block using your favorite method.



Sashing the blocks: From the eighteen 2 1/2" strips make sets by piecing together three different 2 1/2" strips. Check your sewing accuracy by measuring the middle strip, it must be 2". There should be six sets of three. Re-cut all the sets into 2 1/2" segments. (For a total of 96 segments).

Make sashing units by sewing 6 segments together to make units that are 2 squares across by 9 squares down. Try to keep the colors appearing random, it is not necessary to have all 16 sashing units in the same color order. When complete join the sashing units to each the left side of the blocks .



Cornerstones: Using 2 of fabric#6 4 1/2" cornerstone squares alternate with two sashing units. Make four of these rows. Sew them one to the top, two to the middle, and 1 to the bottom of the blocks. When done construct a long vertical row alternating cornerstones and sashing units and sew this to the right side of the assembled blocks and sashing units. If sewn accurately the cornerstones will meet evenly with the sashing units at the top, middle and bottom.

Measure the width across the block /sashing assembly.

Inner border: Fabric #4 make two 2 1/2" strips the same length as the width of the block/sashing assembly. Sew to top and bottom.

Measure the length of the top now. Join two more 2 1/2" strips for the left and two more for the right side. Using fabric #7 2 1/2" squares as corner posts sew one to each top end of the strip. Utilizing the correct length measurement deduct for adding the square at the bottom. The two should exactly match the length of the assembled top.

Measure the width of the top. Using fabric #3 strips make a top and bottom border and sew in place.

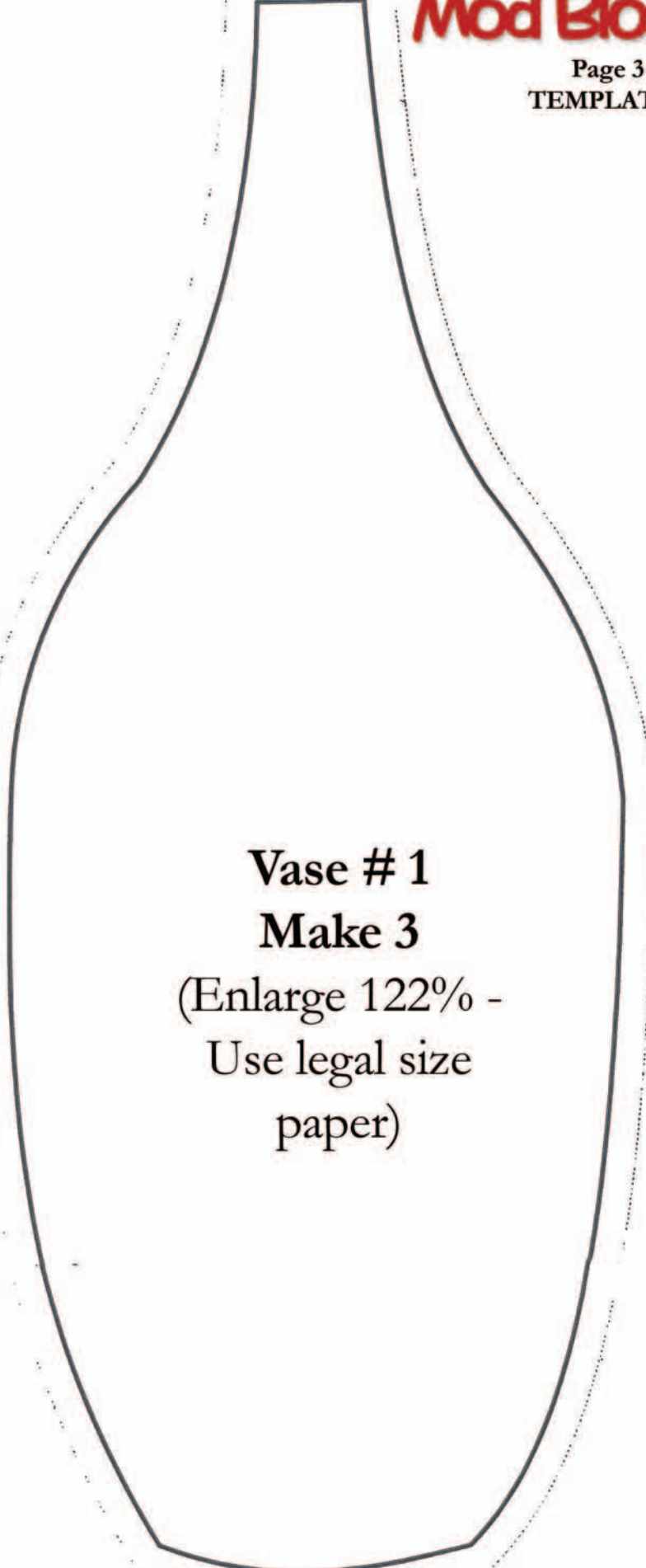
Measure the length of the top. Construct the final side border, trim to the correct length, deducting for the fabric #5 corner post squares. Sew to the top.
That's it, top is done! Done is good!

Quilt as desired, and bind with fabric # 10.



Be sure to visit www.windhamfabrics.com to see the complete collection
and to download this and other Free Projects

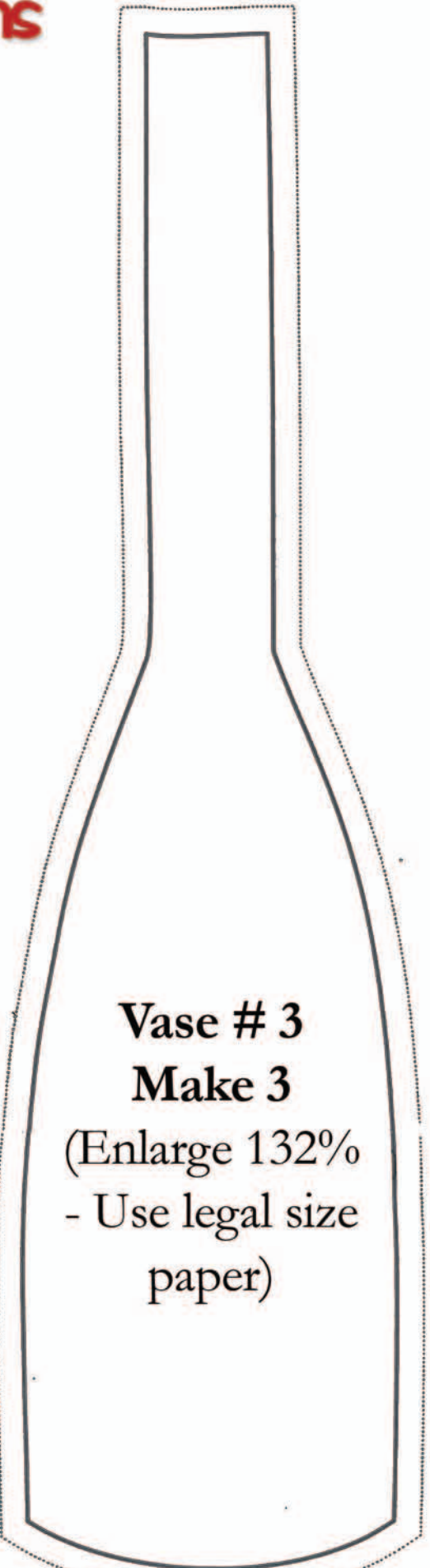
WINDHAM FABRICS

A large, wide-mouthed vase template with a rounded body and a short neck. The template is shown with a solid black outline and a dotted line offset from it, indicating a fold line.

Vase # 1

Make 3

(Enlarge 122% -
Use legal size
paper)

A tall, narrow-necked vase template with a rounded body and a long neck. The template is shown with a solid black outline and a dotted line offset from it, indicating a fold line.

Vase # 3

Make 3

(Enlarge 132%
- Use legal size
paper)

