

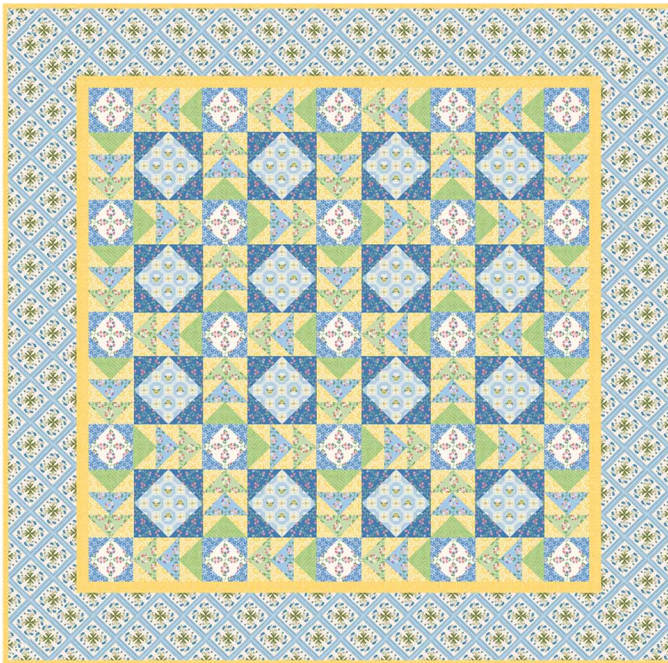
Marie Webster

6. Sew the rows together, alternating the 5 sashing rows with the 4 block rows. Refer to the color picture for directional placement of the Flying Geese units in each row.
7. Sew the narrow borders in green or yellow to the quilt, attaching the vertical borders first, then the horizontal borders.
8. Center and sew the fabric I borders to each side of the quilt top. Miter the corners and trim away excess fabric.

#### Finishing

7. Cut 1-3/4 yd of backing fabric and set aside. Cut the remaining backing fabric in half lengthwise and sew together into a long strip. Sew this strip to one side of the 1-3/4 yd piece to make the backing Layer the quilt top, batting and backing. Baste, then quilt the layers together.
9. Sew the 2-1/4" binding strips together end-to-end. Fold the binding lengthwise and press, then and sew to quilt top. Turn binding to back of quilt and stitch in place.

ENJOY!



Blue Quilt Version

Be sure to visit [www.windhamfabrics.com](http://www.windhamfabrics.com) to see the complete collection and to download this and other Free Projects

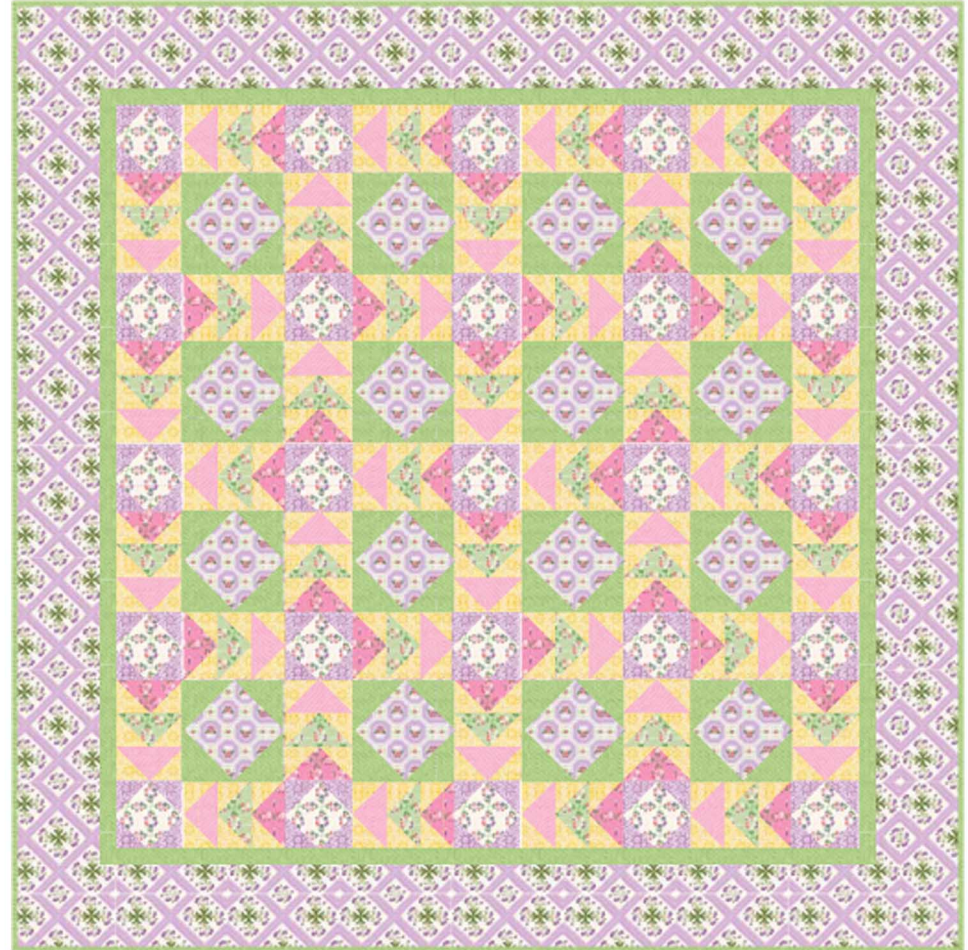
 Windham Fabrics

812 Jersey Ave ~ Jersey City, NJ 07310 ~ 201.659.0444 ~ FAX: 201.659.9719 ~ [info@windhamfabrics.com](mailto:info@windhamfabrics.com)

P R O J E C T

Marie Webster

Quilt Designed by Jean Ann Wright



Featuring Fabric from the Marie Webster Collection  
by Georgia Bonesteel in Association with the Quilter's Hall of Fame

 Windham Fabrics

# Marie Webster

Featuring Fabric from the Marie Webster Collection  
by Georgia Bonesteel in Association with the Quilter's Hall of Fame



Quilt Designed by Jean Ann Wright  
Skill level: Intermediate  
Finished Quilt Size: 58" x 58"



Fabric Requirements and cutting (fabrics for lilac quilt listed first, blue quilt listed second)

\*In cutting wof indicates cutting across the width of the fabric.

Fabric A - 1/3 yd 30019-1 pink or 30019-2 blue

Cut (2) 5-1/4" x wof strips, recut into (10) 5-1/2" squares, then cut each square in half on the diagonal twice to make (40) triangles.

Fabric B - 1/3 yd 30019-3 green (lilac and blue quilt)

Cut (2) 5-1/4" x wof strips, recut into (10) 5-1/2" squares, then cut each square in half on the diagonal twice to make (40) triangles.

Fabric C - 1/3 yd 30020-1 pink or 30019-3 green

Cut (2) 5-1/4" x wof strips, recut into (10) 5-1/2" squares, then cut each square in half on the diagonal twice to make (40) triangles.

Fabric D - 1 yd 30020-4 yellow (lilac and blue quilt)

Cut (9) 2-7/8" x wof strips, recut into (120) 2-7/8" squares, then cut each square in half on the diagonal once to make (240) triangles

Fabric D - 1-1/8 yd 30020-4 yellow (blue quilt only)

Cut (5) 1-1/2" x width of fabric strips, sew together end-to-end then recut into (2) 44-1/2" vertical borders and (2) 46-1/2" horizontal borders. Cut (3) 3-7/8" x wof strips, recut into (32) 3-7/8" squares, then cut each square in half on the diagonal once to yield (64) triangles. Cut (7) 2-1/4" x wof strips, sew together end-to-end for binding.

Fabric E - 1/3 yd 30024-6 purple or 30024-2 blue. Cut (2) 4-3/4" x wof strips, recut into (16) 4-3/4" squares.

Fabric F - 1/2 yd 30017-2 blue

Cut (3) 3-7/8" x wof strips, recut into (32) 3-7/8" squares, then cut each square in half on the diagonal once to yield (64) triangles.

Fabric G - 1/3 yd 3019-5 ivory (for both versions)

Cut (3) 3-3/8" x wof strips, recut into (25) 3-3/8" squares.

Fabric H - 1/2 yd 30018-6 purple or 30018-2 blue

Cut (4) 2-7/8" x wof strips, recut into (50) 2-7/8" squares then cut squares in half on the diagonal once to make 100 triangles.

Fabric I - 1-2/3 yd 30022-6 purple or 3022-2 blue

Cut (4) 6-1/2" x length of fabric strips for outside borders

Fabric J - 2-34 yd 30016-X multi for quilt backing

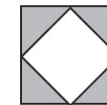
Fabric K - 2 yd 30020-3 green. (lilac quilt only)

Cut (5) 1-1/2" x width of fabric strips, sew together end-to-end then recut into (2) 44-1/2" vertical borders and (2) 46-1/2" horizontal borders. Cut (11) 3-7/8" x wof strips, recut into (32) 3-7/8" squares, then cut each square in half on the diagonal once to yield (64) triangles. Cut (7) 2-1/4" x wof strips, sew together end-to-end for binding.

## Sewing

1. Sew a fabric D triangle to each side of the Fabric A, B and C quarter square triangles (cut from 51-1/4" squares) to make Flying Geese units. Make 120 units, 40 in each color/print.

2. Referring to the color photo of the quilt, sew the Flying Geese units together in sets of 3 using 1 of each color in each set. Make 40 sets.



3. Sew a fabric B green triangle to each side of a fabric E lilac square to make a Square in Square block for lilac quilt. Sew a fabric F triangle to each side of a fabric E blue triangle for a Square in Square block for blue quilt. Make 16 Square in Square blocks.

4. Sew a fabric H purple or blue triangle to each side of a fabric G ivory square to make a Square in Square block for the sashing setting squares. Make 25.

5. The quilt is sewn together in alternating sashing rows and block rows. There are 5 sashing rows and 4 block rows. For the sashing rows sew 5 Square in Square blocks from step 4 and 4 Flying Geese units from steps 1 and 2 to complete 5 rows. For the block rows sew 5 Flying Geese units alternating with 4 Square in Square blocks made in step 3 to complete 4 rows.

