

"MANCHESTER ROSE"

Designed by Karen Witt of Reproduction Quilts
Featuring the Manchester Collection by Nancy Gere™
Size: 55 1/2" X 55 1/2"



WINDHAM FABRICS

812 Jersey Ave ~ Jersey City, NJ 07310 ~ 201.659.0444 ~ FAX: 201.659.9719
www.windhamfabrics.com email: retail@windhamfabrics.com



"MANCHESTER ROSE"

Designed by Karen Witt of Reproduction Quilts
Featuring the Manchester Collection by Nancy Gere™
Size: 55 1/2" X 55 1/2"

Fabric Requirements

31922-3	cream tonal	1/2 yard	center applique background
31920-2	red stripe	1/4 yard	appliqued rosettes
31917-1	blue print	7" X 7"	center applique
31921-4	gray print	1/8 yard	center applique leaves and stems
31924-2	red swirl	1 yard	circle on center motif of center applique, second border piecing, sixth border piecing
31915-4	black floral	2 yards	corner triangles for center, fourth border piecing, sixth border piecing, binding
31918-1	floral stripe	1 1/2 yards	first border, third border, fifth border
31919-1	blue tonal	1/4 yard	centers of rosettes, second border piecing
31927-2	pink print	1/2 yard	fourth border

Cutting Directions

31922-3	cream tonal	Center applique background -- Cut (1) 14" square
31920-2	red stripe	Center applique and fourth border applique blocks -- Cut (6) rosettes, using template
31917-1	blue print	Center applique -- Cut (1) motif for center, using template
31921-4	gray print	Center applique -- Cut (4) leaves and (4) stems for center applique, using templates
31924-2	red swirl	Center applique -- Cut (1) circle for center of blue print motif Second border -- Cut (16) 3 1/2" squares for piecing Sixth border -- Cut (20) 5 1/2" squares for piecing
31915-4	black floral	Center applique -- Cut (2) 10" squares. Cut each square once diagonally to make (4) triangles for corner triangles. Fourth border -- Cut (4) 6" squares for corner applique blocks Cut (56) 3 1/4" squares. Cut each diagonally to make (112) triangles for square in a Square blocks Sixth border -- Cut (20) 5 1/2" squares for piecing Binding -- Cut 2 1/4" strips. Piece, as necessary, to make 230" of binding
31918-1	floral stripe	First border -- Cut (2) strips 2 1/2" X 17 1/2" Cut (2) strips 2 1/2" X 21 1/2" Third border -- Cut (2) strips 2 3/4" X 27 1/2" Cut (2) strips 2 3/4" X 32" Fifth border -- Cut (2) strips 2 3/4" X 41" Cut (2) strips 2 3/4" X 45 1/2"
31919-1	blue tonal	Center applique and fourth border applique blocks Cut (6) circles for rosette centers, using template Second border -- Cut (16) 3 1/2" squares for piecing
31927-2	pink print	Fourth border -- Cut (28) 3 3/4" squares

WINDHAM FABRICS



"MANCHESTER ROSE"

Page 2

Directions

Center Applique Referring to quilt picture, arrange templates.
Use technique of choice for applique.
Press and trim.
Center block should measure 12 1/2" X 12 1/2".

Sew black floral corner triangles to applique center.

Press and trim. Quilt center should now measure 17 1/2" X 17 1/2"

First Border Attach border strips.
Press and trim.
Quilt center should now measure 21 1/2" x 21 1/2".

Second Border Referring to Diagram 1, sew (4) strips of blocks, alternating red swirl squares with blue tonal squares. Sew (1) strip to left and (1) strip to the right side of quilt center.

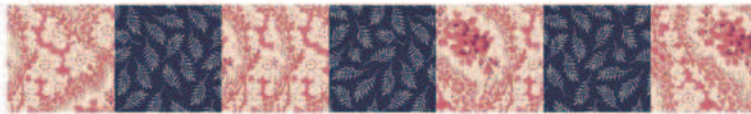


Diagram 1

Referring to Diagram 2, sew (1) blue tonal square to each end of two remaining rows of squares. Sew to top and bottom of quilt center.

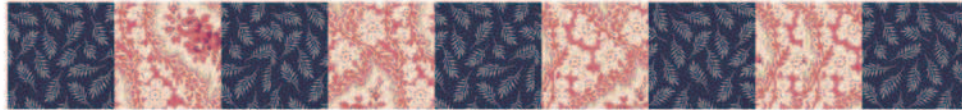


Diagram 2

Quilt center should now measure 27 1/2" X 27 1/2"

Third Border Attach border strips.
Press and trim.
Quilt center should now measure 32" x 32".

Fourth Border 1. Square in a Square Blocks

Referring to Diagram 3, use (1) pink print squares and (4) black floral triangles to make a Square in a Square block.



Diagram 3

Press and trim block.
Block should measure 5" X 5".

Repeat to make (28) Square in a Square blocks.



“MANCHESTER ROSE”

Page 3

Referring to Diagram 4, sew (4) strips of Square in a Square blocks. Sew (1) strip to left and (1) strip to the right side of quilt center.

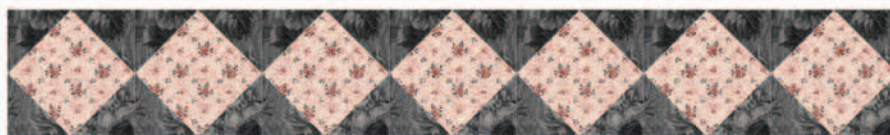


Diagram 4

2. Appliquéd blocks

Use applique method of choice to sew (1) red stripe rosette to center of each of the (4) black floral squares. Trim each block to 5" X 5".

Repeat to make (4) blocks.

Referring to Diagram 5, sew (1) appliquéd square to each end of two remaining rows of squares. Sew to top and bottom of quilt center.

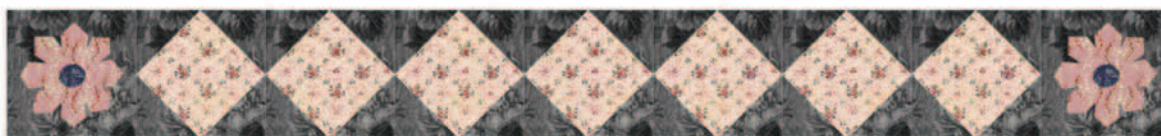


Diagram 5

Quilt center should now measure 41" X 41"

Fifth Border

Attach border strips.
Press and trim.

Quilt center should now measure 45 1/2" x 45 1/2".

Sixth Border

Referring to Diagram 6, sew (4) strips of blocks, alternating red swirl squares with black floral squares. Sew (1) strip to left and (1) strip to the right side of quilt center.

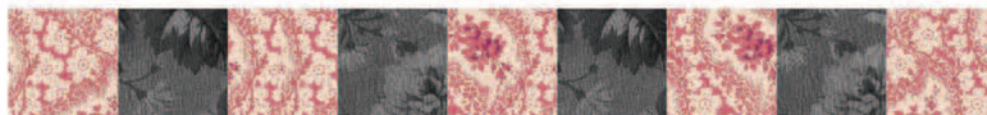


Diagram 6

Referring to Diagram 7, sew (1) black floral square to each end of two remaining strips of squares. Sew to top and bottom of quilt center.

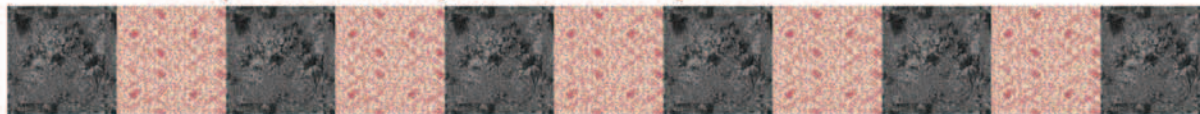


Diagram 7

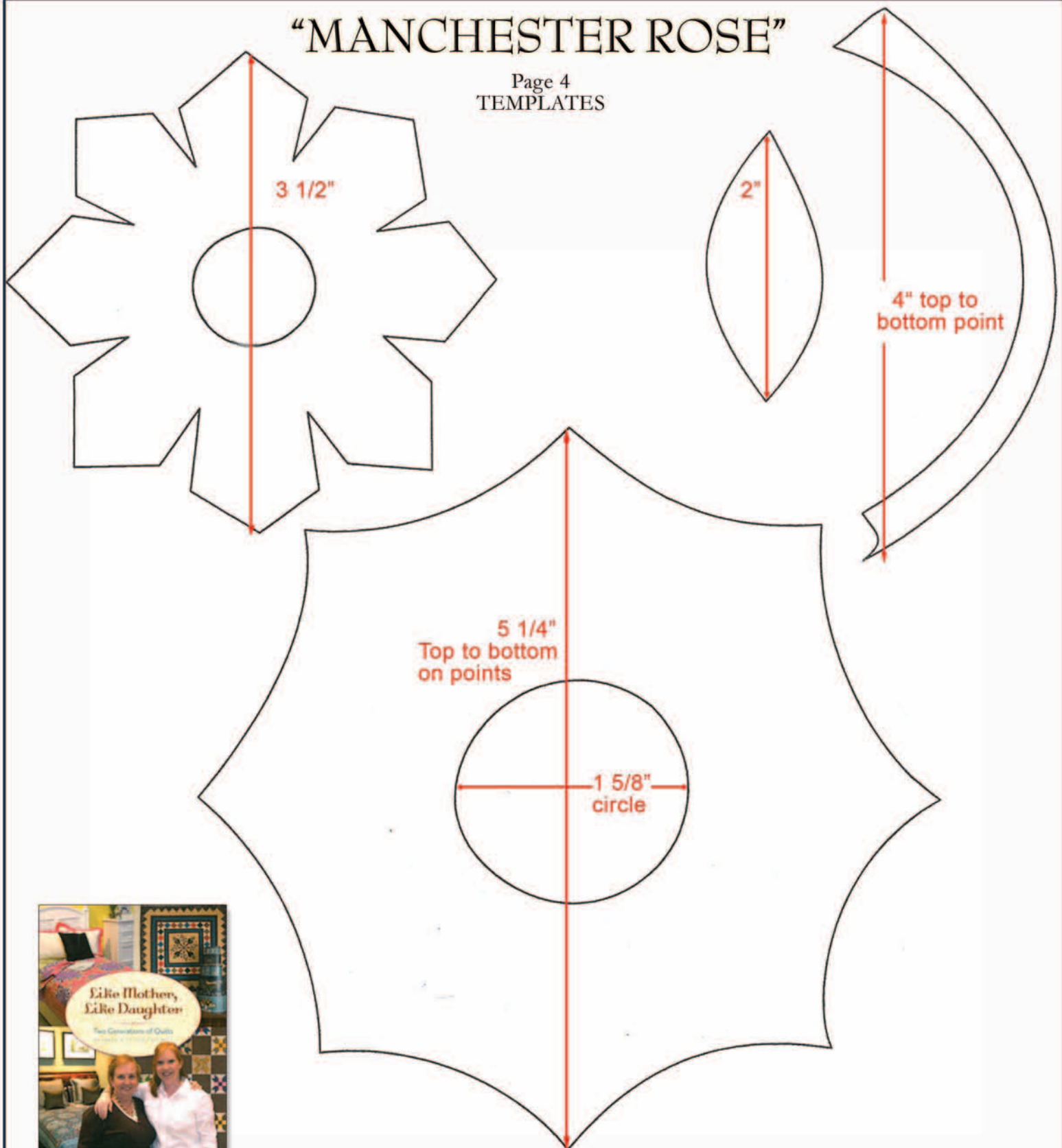
Quilt center should now measure 55 1/2" X 55 1/2"

Quilt and bind, as desired. **ENJOY!**



"MANCHESTER ROSE"

Page 4
TEMPLATES



Please contact: Reproduction Quilts www.reproductionquilts.com / 859-333-6232
for more information about Karen Witt and learn more about her new book:

Like Mother, Like Daughter

Be sure to visit www.windhamfabrics.com to see the complete collection
and to download this and other Free Projects



WINDHAM FABRICS

