

# INDIGO NIGHTS

Designed by Betty New  
Featuring the Indigo Collection by Nancy Gere™  
Size: 62.5" x 68.5"



Feel free to download additional copies of this and other projects by visiting our website: [www.windhamfabrics.com](http://www.windhamfabrics.com)

**WINDHAM FABRICS**

812 Jersey Ave ~ Jersey City, NJ 07310 ~ 201.659.0444 ~ FAX: 201.659.9719  
[www.windhamfabrics.com](http://www.windhamfabrics.com) email: [retail@windhamfabrics.com](mailto:retail@windhamfabrics.com)

# INDIGO NIGHTS

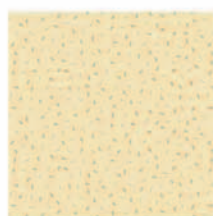
Designed by Betty New  
Featuring the Indigo Collection by Nancy Gere™  
Size: 62.5" x 68.5"

## Fabric Requirements

32725-1 Blue with large cream flower	1 yard
32726-1 Blue with cream clover	$\frac{3}{4}$ yards
32726-3 Cream with blue clover	$\frac{1}{4}$ yards
32727-1 Blue stripe	$\frac{1}{2}$ yards (binding)
32727-2 Tan stripe	1 + $\frac{1}{8}$ yards
32728-4 Tan-Navy leaves and berries	$\frac{1}{2}$ yards
32729-1 Blue with small cream flower	$\frac{1}{2}$ yards
32730-1 Blue with cream swirls	1 + $\frac{7}{8}$ yards
32730-2 Tan with cream swirls	$\frac{3}{8}$ yards
32731-3 Cream with blue flecks	1 + $\frac{1}{8}$ yards (pieced border)
32731-5 Cream-Tan with small flecks	1 yard
Backing	4 + $\frac{1}{4}$ yards



32725-1



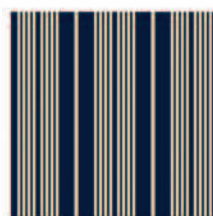
32731-5



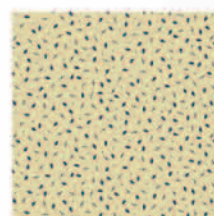
32726-1



32726-3



32727-1



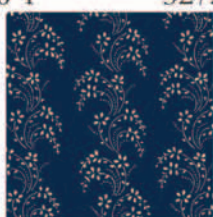
32731-3



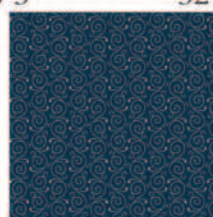
32727-2



32728-4



32729-1



32730-1



32730-2

## Fabric Cutting Instructions

*Starch and press all fabrics before cutting.*

*Fusible web such as Steam-A-Seam 2 and stabilizer needed for raw edge appliqué.*

32725-1 Blue with large cream flower  
Sixteen 1 1/2" X 2 1/2" rectangles  
Sixteen 1 1/2" X 4 1/2" rectangles  
Eight 3" X Width of Fabric (WOF)

32726-1 Blue with cream clover  
Twenty-four 1 1/2" X 8 1/2" rectangles  
Twenty-four 1 1/2" X 10 1/2" rectangles  
Eight 3 1/4" X 3 1/4" squares

32726-3 Cream with blue clover  
Sixteen 1" X 8 1/2" rectangles  
Sixteen 1" X 7 1/2" rectangles



WINDHAM FABRICS

# INDIGO NIGHTS



Page 2

32727-1 Blue stripe

\*Bias binding strips of choice width

32727-2 Tan stripe

Eighteen stems (match straight of grain with arrows on pattern)  
Directions given in Blocks C-1 and C-2.

32728-4 Tan-Navy leaves and berries

Eight 1 1/2" X 6 1/2" rectangles  
Eight 1 1/2" X 8 1/2" rectangles

32729-1 Blue with small cream flower

Sixteen 1 1/2" X 5 1/2" rectangles  
Sixteen 1 1/2" X 7 1/2" rectangles

32730-1 Blue with cream swirls

Eighteen 10 1/2" X 10 1/2" squares

32730-2 Tan with cream swirls

Sixteen 1" X 4 1/2" rectangles  
Sixteen 1" X 5 1/2" rectangles  
Eight 3 1/4" X 3 1/4" squares

32731-3 Cream with blue flecks

Eight 1 1/2" X 4 1/2" rectangles  
Eight 1 1/2" X 6 1/2" rectangles  
Eight 1 1/2" X WOF  
Eight 2" X WOF

32731-5 Cream-Tan with small flecks

Eight 2 1/2" X 2 1/2" squares  
Thirty-two "A" Leaves  
One hundred sixty-two "B" leaves

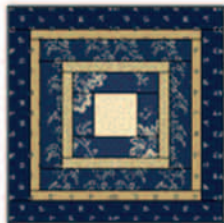
*\*Trace and fuse webbing to back of fabric before cutting leaves following manufacturer's instructions.*

## Sewing Instructions

*All seams allowances are 1/4 inch.*



Block A  
Make four.



Block B  
Make eight.



Block C-1  
Make six.

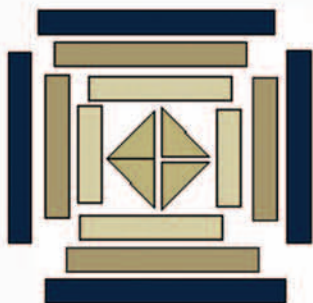


Block C-2  
Make twelve.

# INDIGO NIGHTS

Page 3

## Block A



For **one** of Block A use the following in the order given:

32730-2 Tan	Two 3 1/4" X 3 1/4" squares
32726-1 Blue	Two 3 1/4" X 3 1/4" squares
32731-3 Cream	Two 1 1/2" X 4 1/2" rectangles
	Two 1 1/2" X 6 1/2" rectangles
32728-4 Tan/Navy	Two 1 1/2" X 6 1/2" rectangles
	Two 1 1/2" X 8 1/2" rectangles
32726-1 Blue	Two 1 1/2" X 8 1/2" rectangles
	Two 1 1/2" X 10 1/2" rectangles
32731-5 Cream/Tan	Eight of leaf A

**Center of block:** The center is made of four half-square triangles. Use two 3 1/4" X 3 1/4" tan squares and two 3 1/4" X 3 1/4" blue squares. Draw a diagonal line on the wrong side of each tan square. Place a tan and blue square with right sides together and stitch 1/4" away from both sides of the diagonal line. Cut on the diagonal line. Open and press toward the blue fabric. Trim down to exactly 2 1/2".

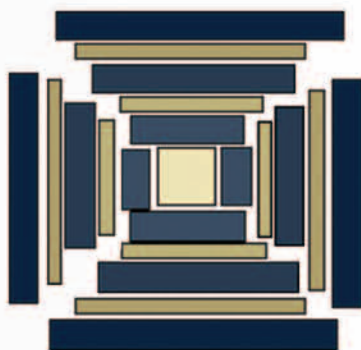
Place four HST as shown in the diagram for Block A and stitch together. Press and measure. The center portion should measure 4 1/2" X 4 1/2".

Attach cream rectangles around the center block, then the tan/navy, and finally the blue rectangles. The block should now measure 10 1/2" X 10 1/2". Repeat directions for a total of four blocks.

Trace eight of leaf A to the fusible webbing. Iron to the back of cream/tan fabric and cut out. Arrange the leaves as shown in the diagram and press in place. Place a piece of lightweight stabilizer on the back of the block. Stitch around each leaf with a satin stitch, blanket stitch, or other decorative stitch of choice using a cream colored thread. Remove the stabilizer.

**Repeat the process for a total of four blocks.**

## Block B



For **one** of Block B use the following in the order given:

32731-5 Cream/Tan	One 2 1/2" X 2 1/2" square
32725-1 Blue	Two 1 1/2" X 2 1/2" rectangles
	Two 1 1/2" X 4 1/2" rectangles
32730-2 Tan	Two 1" X 4 1/2" rectangles
	Two 1" X 5 1/2" rectangles
32729-1 Blue	Two 1 1/2" X 5 1/2" rectangles
	Two 1 1/2" X 7 1/2" rectangles
32726-3 Cream	Two 1" X 7 1/2" rectangles
	Two 1" X 8 1/2" rectangles
32726-1 Blue	Two 1 1/2" X 8 1/2" rectangles
	Two 1 1/2" X 10 1/2" rectangles

Start with the 2 1/2" square in the center and attach the blue rectangles to each side and then to the top and bottom of the square. Repeat the process with the remaining strips alternating creams and blues. Press all seams toward the outside edge. The block should measure 10 1/2" X 10 1/2". Repeat the process making a total of eight blocks.



# INDIGO NIGHTS



Page 4

## Blocks C-1 and C-2

The background for each block is a 10 1/2" X 10 1/2" square.

**Tracing and cutting stems from cream stripe fabric:** Follow the manufacturer's directions for fusible webbing. Trace six of stem A and twelve of stem B and mark the straight of grain arrows. Note that these patterns are in reverse. Fuse to the back of the stripe fabric carefully aligning the straight of grain arrows with the stripes in the fabric. Cut out on the line and remove paper backing. Fuse the stems to the right side of the blocks as shown in the diagrams. There will be six stems leaning to the left and twelve leaning to the right.

**Leaves:** Fuse the "B" leaves to the block as shown in the diagram.

Place a piece of lightweight stabilizer to the back of each block. Stitch around the stems and leaves using a satin stitch, blanket stitch, or other decorative stitch using a cream colored thread. Remove the stabilizer.

## Quilt Assembly



## Rows of Blocks

Assemble five vertical rows of blocks as shown in the diagram. Press seams. Rows measure 10 1/2" X 60 1/2". Make sashing strips by connecting the 1 1/2" X WOF strips with a bias seam. Cut four strips 60 1/2" long. Connect vertical rows with sashing strips.

## Borders

**Cream Border:** Connect the 2" X WOF strips using a bias seam. Cut two strips 60 1/2" long and attach to the left and right sides of the quilt. Cut two strips 57 1/2" long and attach to the top and bottom of the quilt.

**Blue Border:** Connect the 3" X WOF strips using a bias seam. Cut two strips 63 1/2" long and attach to the left and right sides of the quilt. Cut two strips 62 1/2" long and attach to the top and bottom of the quilt.

# INDIGO NIGHTS

Page 5

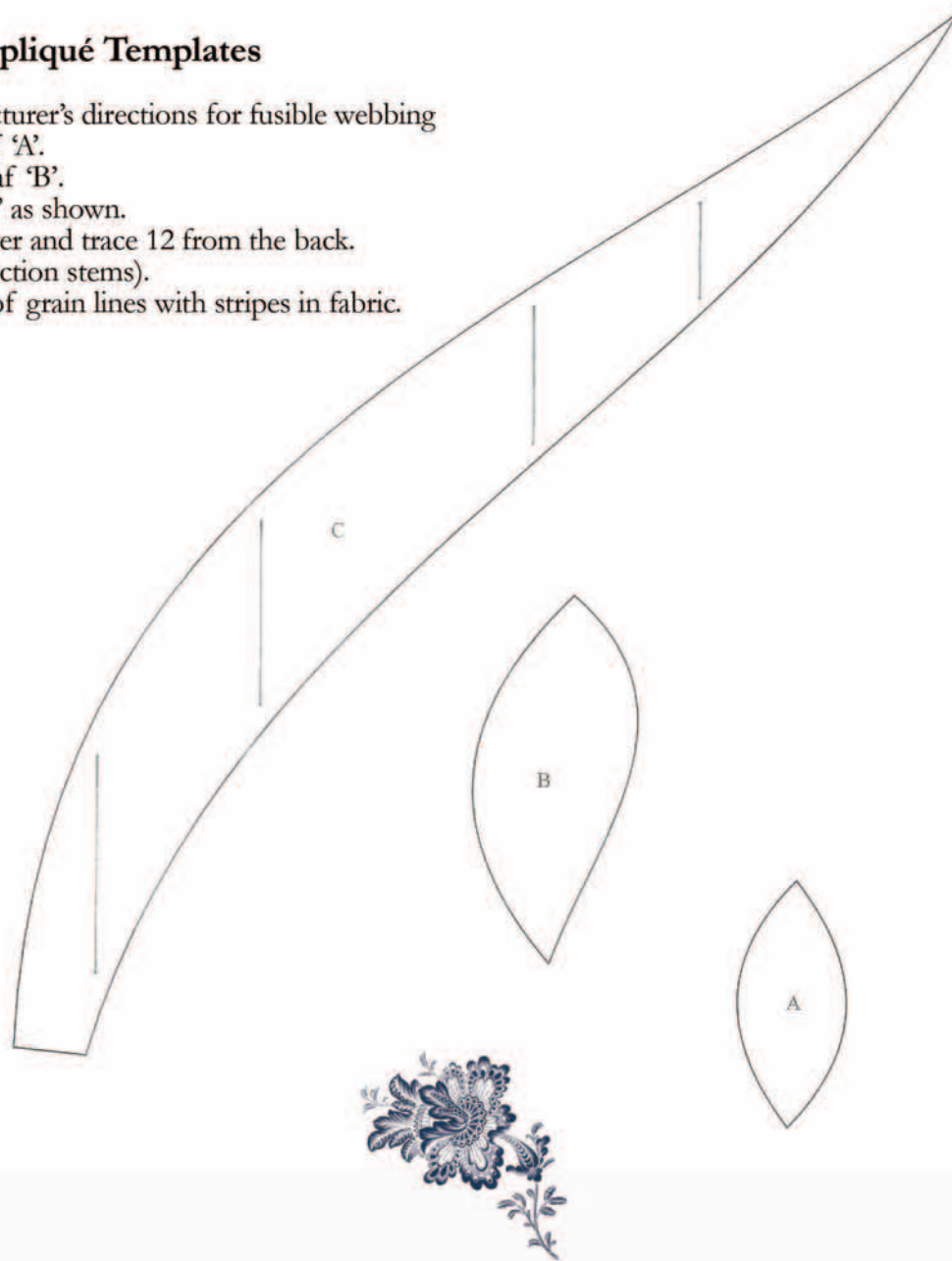
## Finishing:

Layer, baste and quilt. Use the blue striped fabric to make bias binding cut at your chosen width.

ENJOY!

## Raw Edge Appliqué Templates

- Follow manufacturer's directions for fusible webbing
- Trace 32 of leaf 'A'.
- Trace 162 of leaf 'B'.
- Trace 6 stem 'C' as shown.  
Turn pattern over and trace 12 from the back.  
(for reverse direction stems).  
Match straight of grain lines with stripes in fabric.



Be sure to visit [www.windhamfabrics.com](http://www.windhamfabrics.com) to see the complete collection  
and to download this and other Free Projects

WINDHAM FABRICS