

# Home Sweet Home

Designed by © Erin Witt Designs

Featuring the Home Sweet Home Collection from *Williamsbury*<sup>®</sup>

Size: 64" x 68"



Feel free to download additional copies of this and other projects by visiting our website: [www.windhamfabrics.com](http://www.windhamfabrics.com)

**WINDHAM FABRICS**

812 Jersey Ave ~ Jersey City, NJ 07310 ~ 201.659.0444 ~ FAX: 201.659.9719  
[www.windhamfabrics.com](http://www.windhamfabrics.com) email: [retail@windhamfabrics.com](mailto:retail@windhamfabrics.com)

# Home Sweet Home

Designed by © Erin Witt Designs

Featuring the Home Sweet Home Collection from

*Williamsburg*

Size: 64" x 68"

(6) 8" Hourglass Blocks

(6) 12" Blocks

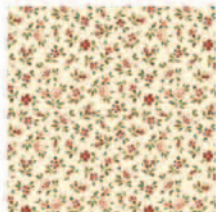
Level: Intermediate

## Fabric Requirements

- 33358P-X Multi -- 1 Panel
- 33359-X Multi -- 2 1/2 Yards
- 33360-1 Green -- 2 Yards
- 33362-3 Cream -- 1 Yard
- 33363-3 Cream Print -- 1/2 Yard
- 33364-4 Blue -- 3/4 Yard
- 33364-5 Pink -- 3/4 Yard



33362-3



33363-3



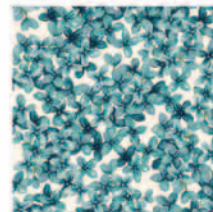
33358P-X



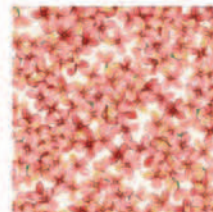
33359-X



33360-1



33364-4



33364-5

## Cutting Directions

### # 33358P-X Multi (Panel)

Fussy cut large panel 22 1/2" wide X 24 1/2" tall for center of quilt.

### # 33359-X Multi

- Cut (2) 5 1/2" X 64 1/2" strips for top and bottom of second border.
- Cut (2) 5 1/2" X 58 1/2" strips for sides of second border.
- Cut (4) 4 1/2" X 12 1/2" strips.
- Cut (4) 2 1/2" X 24 1/2" strips.
- Cut (6) 4 1/2" X 4 1/2" squares for Unit 1.

### # 33360-1 Green

- Cut (2) 3 1/2" X 54 1/2" strips for top and bottom of first border.
- Cut (2) 3 1/2" X 52 1/2" strips for sides of first border.
- Cut (2) 2 1/2" X 24 1/2" strips
- Cut (2) 1 1/2" X 24 1/2" strips
- Cut (12) 4 7/8" X 4 7/8" squares. Cut diagonally once to make (24) large triangles for Unit 1.
- Cut (24) 2 7/8" X 2 7/8" squares. Cut diagonally once to make (48) small triangles for Unit 1.
- Cut (4) 9 1/4" X 9 1/4" squares. Cut diagonally twice to make (8) triangles for Hourglass blocks.

### # 33362-3 Cream

- Cut (2) 9 1/4" X 9 1/4" squares. Cut diagonally twice to make (4) triangles for Hourglass blocks.
- Cut (24) 2 7/8" X 2 7/8" squares. Cut diagonally once to make (48) small triangles for Unit 1.
- Cut (6) 5 1/4" X 5 1/4" squares. Cut diagonally twice to make (24) larger triangles for Unit 1.
- Cut (24) 2 1/2" X 2 1/2" corner squares for Unit 1.



**WINDHAM FABRICS**

# Home Sweet Home

Page 2

## # 33363-3 Cream Print

Cut (6) 5 1/4" X 5 1/4" squares. Cut diagonally twice to make (24) triangles for Unit 1.

## # 33364-4 Blue

Cut (4) 9 1/4" X 9 1/4" squares. Cut diagonally twice to make (8) triangles for Hourglass blocks.

Cut (4) 4 1/2" X 12 1/2" strips

## # 33364-5 Pink

Cut (2) 9 1/4" X 9 1/4" squares. Cut diagonally twice to make (4) triangles for Hourglass blocks.

Cut (24) 2 7/8" X 2 7/8" squares. Cut diagonally once to make (48) triangles for Unit 1.

## Instructions

1. Sew (1) 1 1/2" X 24 1/2" strip of green to each side of center panel.  
Sew (1) 2 1/2" X 24 1/2" strip of green to top and (1) 2 1/2" X 24 1/2" strip to bottom of center panel.  
Quilt center should now measure 24 1/2" X 28 1/2".

### 2. Unit 1

Sew (1) cream print triangle to each side of multi print square.

Sew (1) larger green triangle to each side of unit made above.  
Unit should measure 8 1/2" X 8 1/2".

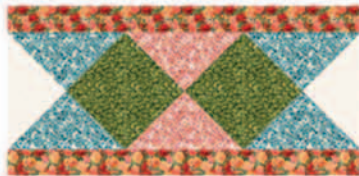
Sew (1) pink triangle to each side of a larger cream triangle.  
Sew (1) small cream triangle to (1) small green triangle. Repeat.  
Sew (1) cream/green half square triangles to each side of unit made above.  
Repeat to make (4) for each block.



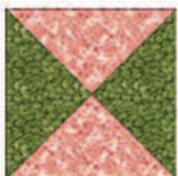
Referring to picture of Unit 1, sew center, (4) sides and (4) cream squares to make each block.

Repeat to make (6) blocks.

### 3. Unit 2



Sew triangles together to create (2) Block 1's, as pictured on the left.



Sew triangles together to create (2) Block 2's, as pictured on the left.



WINDHAM FABRICS

# Home Sweet Home

Page 3



Sew triangles together to create (2) Block 3's, as pictured on the left.

Referring to quilt picture for placement sew together (1) each of Block1, Block 2, Block 3 to create Unit 2.

Sew one (1) 2 1/2" X 24 1/2" multi strip to top and (1) 2 1/2" X 24 1/2" multi strip to bottom of row of blocks.

Repeat to make (2).

4. Sew (1) Unit 1 to each side of both Unit 2's.

5. Unit 3

Sew (1) 4 1/2" X 12 1/2" multi strip to each side of (2) remaining Unit 1's.

Sew (1) 4 1/2" X 12 1/2" blue strip to each side to make (2) Unit 3's.

6. Sew (1) Unit 3 to each side of quilt center.

7. Sew (1) strip of blocks made in Steps 3-4 to top of quilt center.

8. Sew (1) strip of blocks made in Steps 3-4 to bottom of quilt center.

Quilt center should now measure 48 1/2" X 52 1/2".

9. First Border

Sew (1) 3 1/2" X 52 1/2" strip to each side of quilt center.

Sew (1) 3 1/2" X 54 1/2" strip to top and (1) 3 1/2" X 54 1/2" strip to bottom of quilt center.

Quilt center should now measure 54 1/2" X 58 1/2".

10. Second Border

Sew (1) 5 1/2" X 58 1/2" strip to each side of quilt center.

Sew (1) 5 1/2" X 64 1/2" strip to top and (1) 5 1/2" X 64 1/2" strip to bottom of quilt center.

Quilt center should now measure 64 1/2" X 68 1/2".



Quilt and bind, as desired.

**ENJOY!!**



**Always look on our website before starting your project to see  
if there are any updates or corrections**

**Be sure to visit [www.windhamfabrics.com](http://www.windhamfabrics.com) to see the complete collection  
and to download this and other Free Projects**

**WINDHAM FABRICS**