

# *“Hand Picked”*

Designed by Irene Berry  
Featuring the Strawberry Picnic Collection by Whistler Studios  
Size: 46” x 60”



WINDHAM FABRICS

812 Jersey Ave ~ Jersey City, NJ 07310 ~ 201.659.0444 ~ FAX: 201.659.9719  
www.windhamfabrics.com email: retail@windhamfabrics.com



# “Hand Picked”

Designed by Irene Berry  
 Featuring the Strawberry Picnic Collection by Whistler Studios  
 Size: 46” x 60”  
 Four Patch Block size: 6”

Fabric	Yards	Cutting
31966-1 blue	1 7/8	2 side borders 5” x 62 1/2”, 2 top/bottom borders 5” x 48 1/2”, 4 A, 38 B
31966-2 yellow	fat 1/8	
31966-3 red/white	fat 1/8	
31968-1 blue	fat 1/8	
31968-2 yellow	fat 1/8	
31968-4 green	fat 1/8	
31969-1 blue	fat 1/8	
31969-4 green	fat 1/8	
31970-1 blue	fat 1/8	
31972-1 blue	fat 1/8	
31972-3 red	fat 1/8	
31972-4 green	fat 1/8	
31973-3 red	fat 1/8	

136 A total



25030



25027



25031

1930's Solids		
25030 red solid*	5/8	6 strips binding 2 1/4” x WOF, 2 side borders 1” x 53 1/2”, 2 top/bottom borders 1” x 39 1/2”, 24C
25027 yellow solid	3/8	44 B
25031 blue solid	fat 1/8	24 C
Backing	3	2 panels 33” x 50”

\*includes binding

Note: Border measurements include 2” extra. WOF denotes width of fabric, approximately 40”-42”



31966-1



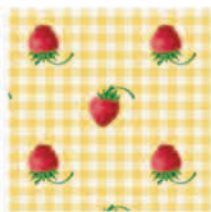
31966-2



31966-3



31968-1



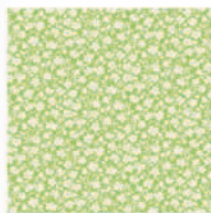
31968-2



31968-4



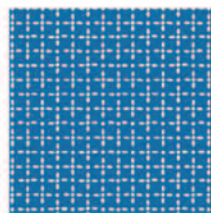
31969-1



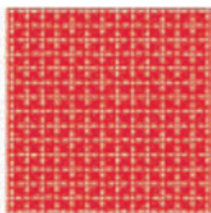
31969-4



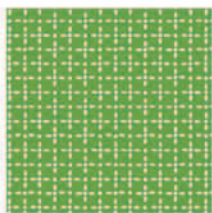
31970-1



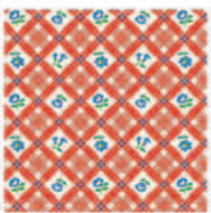
31972-1



31972-3



31972-4



31973-3



WINDHAM FABRICS

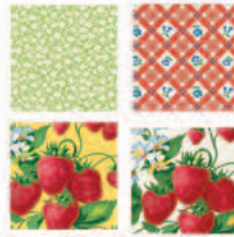


# “Hand Picked”

Page 2

## Patch Sizes:

- A= 3 1/2" x 3 1/2" square  
B= 1 1/2" x 6 1/2" rectangle  
C= 1 1/2" x 1 1/2" square



## Assembly:

1. Cut patches and border strips as listed. Referring to the block piecing diagram and selecting fabrics randomly, join A's in 2 rows of 2 to make a Four Patch block. Make 35 blocks.
2. On a design wall or flat surface and referring to the picture and quilt assembly diagram for fabric placement, arrange the blocks alternately with yellow or blue print B's to make block rows. Arrange sash rows, composed of yellow or blue print B's and solid red or blue C's, alternately with the block rows. When you are satisfied with the arrangement, join the blocks into rows. Join the rows.
3. Referring to the quilt picture and matching centers, join a red side border to a blue print side border. Repeat. Similarly, join the red top and bottom borders to the blue print top and bottom borders.
4. Matching centers, sew the side borders to the sides of the quilt, stopping and starting the stitching 1/4" away from the edges of the quilt. Similarly, sew the remaining borders to the top and bottom of the quilt, stopping and starting the stitching 1/4" away from the edges of the quilt.
5. Matching the border seams, miter the corners. Trim excess fabric, leaving a 1/4" seam allowance. Press the seam allowance open.

Block Piecing Diagram

## Finishing:

1. Join the backing panels along the long sides. Layer the backing, batting, and quilt top. Baste.
2. Quilt in the ditch around the block patches. Quilt around the printed motifs in the larger patches and borders or as desired.
3. Join the binding strips end to end with diagonal seams. Bind the quilt to finish. ENJOY!



Partial Quilt Assembly Diagram

Be sure to visit [www.windhamfabrics.com](http://www.windhamfabrics.com) to see the complete collection and to download this and other Free Projects

