

“Gettysburg Memorial”

Civil War VIII

Designed by Karen Witt

Featuring the Gettysburg Collection by Nancy Gere

REVISED



WINDHAM FABRICS



812 Jersey Ave ~ Jersey City, NJ 07310 ~ 201.659.0444 ~ FAX: 201.659.9719
www.windhamfabrics.com email: retail@windhamfabrics.com

“Gettysburg Memorial”

Designed by Karen Witt
Featuring the Gettysburg Collection by Nancy Gere
Size: 56" x 56"
(9) 12" Blocks / (4) 8" Corner Blocks

FABRIC REQUIREMENTS:

31674-3	1 yard	cream print	Block 1, corner blocks
31686-X	1/2 yard	flag print	centers of Block 1
31678-2	1 3/4 yards	blue print	Block 1, corner blocks, binding
31669-7	3/4 yard	black stripe	Block 2
31667-1	1 yard	red paisley	Block 2, corner blocks, inner border
31665-2	1 yard	blue stars	pieced border
31669-1	1 yard	red stripe	pieced border
31687-1	1/4 or FQ	stripe with words	corner blocks



31674-3



31686-X Flag Print

CUTTING DIRECTIONS

31674-3 cream print Block 1, corner blocks

Cut (20) 2 1/2" squares for A, Block 1.

Cut (20) 2 7/8" squares.

Cut each square once diagonally to make (40) triangles for B, Block 1.

Cut (5) 5 1/4" squares.

Cut each square twice diagonally to make (20) triangles for C, Block 1.

Cut (10) 4 7/8" squares.

Cut each square once diagonally to make (20) triangles for D, Block 1.

Cut (4) 2 3/8" squares.

Cut each square once diagonally to make (8) triangles I for pinwheel stars in top corner blocks in border.

Cut (2) 5 1/2" squares.

Cut each square twice diagonally to make (8) triangles (N) for bottom corner blocks in border.

31686-X flag print centers of Block 1

Fussy cut (5) 4 1/2" squares for E, Block 1 -- centering flag motifs.

31678-2 blue print Block 1, corner blocks, binding

Cut (5) 5 1/4" squares.

Cut each square twice diagonally to make (20) triangles for C, Block 1.

Cut (40) 2 7/8" squares.

Cut each square once to make (80) triangles for B, Block 1.

Cut (4) 2 3/8" squares.

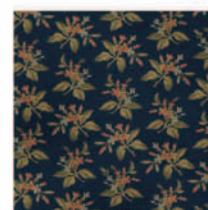
Cut each square once diagonally to make (8) triangles (I) for pinwheel stars in top corner blocks in border.

Cut (8) 1 3/4" x 4 1/2" (M) rectangles for the cross bars in the bottom corner blocks of the border.

Cut (8) 1 1/2" x 8 1/2" strips for corner blocks.

Cut (8) 1 1/2" x 6 1/2" strips for narrow border at top and bottom of corner blocks in border

Cut 2 1/4" strips, piecing as necessary, to make 245" of binding



31678-2



WINDHAM FABRICS



“Gettysburg Memorial”

Page 2

31669-7 black stripe Block 2

Cut (16) 3 7/8" x 6 1/2" rectangles for F, Block 2.

Cut (8) 3 7/8" squares.

Cut each square once diagonally to make (16) triangles for G, Block 2.



31669-7

31667-1 red paisley Block 2, corner blocks, inner border

Cut (16) 3 1/2" squares for H, Block 2.

Cut (8) 3 7/8" squares.

Cut each square once diagonally to make (16) triangles for G, Block 2.

Cut (2) 1 3/4" squares for L in center of bottom corner blocks in the border.

Cut (2) 2 1/2" x 36 1/2" strips for side inner border.

Cut (2) 2 1/2" x 40 1/2" strips for top and bottom inner border.



31667-1

31665-2 blue stars pieced border

Cut (20) 6 1/8" squares for border.



31665-2

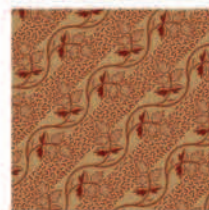
31669-1 red stripe pieced border

Cut (8) 9 1/4" squares.

Cut each square twice diagonally to make (32) setting triangles for the border.

Cut (8) 4 7/8" squares.

Cut each square once diagonally to make (16) corner triangles for the border.



31669-1

31687-1 stripe with words corner blocks

Cut (2) 3 1/2" squares for (J) top corner blocks in the border.

Cut (2) 3 1/2" x 6 1/2" rectangles (K) for top corner blocks in the border.



31687-1

INSTRUCTIONS

Block 1 -- for each block

1.

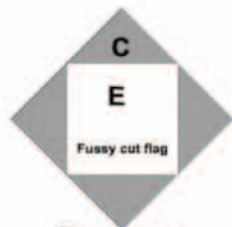


Diagram 1

Referring to Diagram 1, sew (4) blue print C's to the sides of (1) fussy cut flag E.

Press and trim.

Unit should now measure 6 1/8" x 6 1/8."

2.

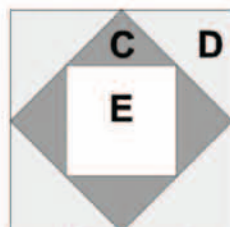


Diagram 2

Referring to quilt picture and Diagram 2, sew (4) cream print D's to the sides of the unit made in Step 1.

Press. NOTE: there's no trimming, All units finish exact size and seams. Block center should now measure 8 1/2" x 8 1/2."



WINDHAM FABRICS



“Gettysburg Memorial”

Page 3

3.



Diagram 3

Referring to Diagram 3, sew (2) blue print (B) triangles to opposite sides of white print C.

Press.

Cream unit should measure $2\frac{1}{2}'' \times 4\frac{1}{2}''$.

Repeat to make (4) units for each block.

4.



Diagram 4

Referring to Diagram 4, sew (1) blue print (B) triangle to (1) cream print (B) triangle to form a half-square triangle unit.

Press.

Unit should measure $2\frac{1}{2}'' \times 2\frac{1}{2}''$.

Repeat to make (8) units for each block.

5.

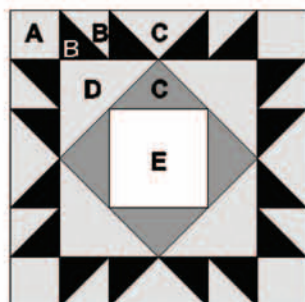


Diagram 5

Referring to quilt picture and Diagram 5, assemble units made in Steps 1-4 with (4) cream print A's to make (1) block.

Press.

Block should measure $12\frac{1}{2}'' \times 12\frac{1}{2}''$.

Repeat to make (5) Block 1.

Block 2 -- for each block

1.

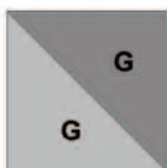


Diagram 6

Referring to Diagram 6, sew (1) red paisley G triangle to (1) black stripe G triangle.

Press. Unit should measure $3\frac{1}{2}'' \times 3\frac{1}{2}''$.

Repeat to make (4) units.

2.

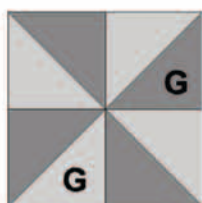


Diagram 7

Referring to Diagram 7, sew (4) half-square triangle units made in Step 1 together to form a pinwheel square.

Press. Unit should measure $6\frac{1}{2}'' \times 6\frac{1}{2}''$.



WINDHAM FABRICS



“Gettysburg Memorial”

Page 4

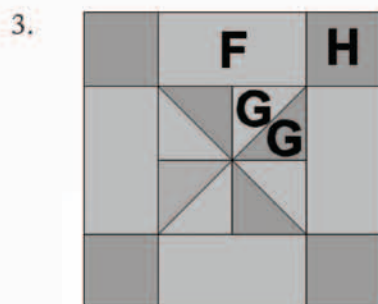


Diagram 8

Referring to Diagram 8, use the unit made in Steps 1-2, (4) black stripe F rectangles and (4) red print H squares to make (1) block 2.

Press. Unit should measure 12 1/2" x 12 1/2".

Repeat to make (4) Block 2.

Top corner blocks -- for each block

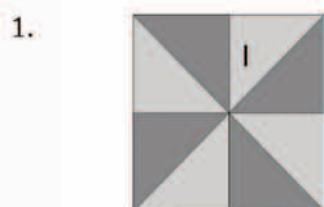


Diagram 9

Referring to Diagram 9, sew (4) blue print triangles to (4) cream print I triangles together to form a pinwheel square.

Press. Unit should measure 3 1/2" x 3 1/2".

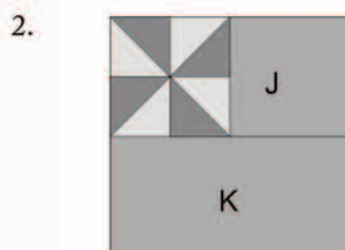


Diagram 10

Referring to Diagram 10, sew together (1) unit made in Step 1, stripe with words J square and (1) stripe with words K rectangle.

Press. Unit should measure 6 1/2" x 6 1/2".

3. Sew (1) 1 1/2" x 6 1/2" blue print strip to each side of unit.
Sew (1) 1 1/2" x 8 1/2" blue print strip to top and (1) to the bottom of unit.

Press. Block should measure 8 1/2" x 8 1/2".

Repeat to make (2) corner blocks.

Bottom border blocks -- for each block

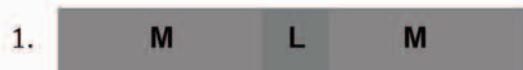


Diagram 11

Referring to Diagram 11, sew (1) blue print M rectangle to opposite sides of (1) red paisley L square.



WINDHAM FABRICS



“Gettysburg Memorial”

Page 5

2.

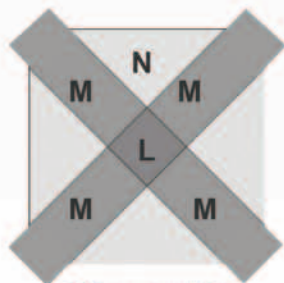


Diagram 12

Referring to Diagram 12, sew (1) cream print triangle to each side of (1) blue print M rectangle. Repeat to make a second unit.

Sew unit made in Step 1 and the units made in this step together.

Press. Trim unit to $6\frac{1}{2}'' \times 6\frac{1}{2}''$.

3.

Sew (1) $1\frac{1}{2}'' \times 6\frac{1}{2}''$ blue print strip to opposite sides of block.

Sew (1) $1\frac{1}{2}'' \times 8\frac{1}{2}''$ blue print strip to top and (1) to the bottom of block.

Press. Block should now measure $8\frac{1}{2}'' \times 8\frac{1}{2}''$.

Repeat to make (2) corner blocks.

ASSEMBLY

1. Referring to quilt picture, arrange blocks in 3 rows of 3 blocks each. Sew rows together to make quilt center.

2. Sew red paisley border strips to quilt center.

3.



Diagram 13

Referring to Diagram 13, arrange (5) blue star squares, (8) red print setting triangles and (4) red print corner triangles to make a pieced border.

Repeat to make (4) pieced borders.

4. Sew (1) pieced border to opposite sides of the quilt center.

5. Sew (1) top corner block to each of a pieced border.
Sew to top of quilt center.

6. Sew (1) bottom corner block to each end of a pieced border.
Sew to bottom of quilt center.

7. Quilt and bind, as desired.

ENJOY!

For more information about Karen Witt and Reproduction Quilts (C)
visit: www.reproductionquilts.com
859-333-6232

Be sure to visit www.windhamfabrics.com to see the complete collection
and to download this and other Free Projects



WINDHAM FABRICS

