

# Fruit Bowl

Designed by Karen Witt ©Reproduction Quilts  
Featuring the Aubergine Collection by Whistler Studios  
Size: 60" x 60"



Feel free to download additional copies of this and other projects by visiting our website: [www.windhamfabrics.com](http://www.windhamfabrics.com)

**WINDHAM FABRICS**

812 Jersey Ave ~ Jersey City, NJ 07310 ~ 201.659.0444 ~ FAX: 201.659.9719  
[www.windhamfabrics.com](http://www.windhamfabrics.com) email: [retail@windhamfabrics.com](mailto:retail@windhamfabrics.com)

# Fruit Bowl

Designed by Karen Witt ©Reproduction Quilts  
Featuring the Aubergine Collection by Whistler Studios  
Size: 60" x 60"



33636-1



33637-1



33637-2



33637-3



33638-2



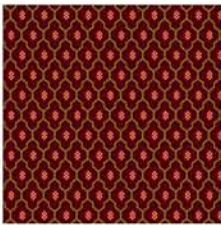
33639-1



33640-1



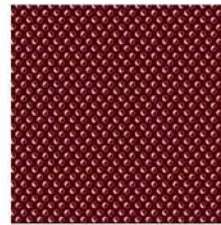
33640-3



33641-2



33642-1



33642-2



33642-3



32033-18



32033-7



32035-5



32034-7



32034-17

SKU	Description	Yardage	Use in Quilt
33642-2	Aubergine dots	1/8	Appliquéd stems
33637-1	Navy flower print	1/4	Appliquéd vase
33642-3	Gold dots	1/8	Appliquéd band on vase
33637-2	Aubergine flowers	1/2	Appliquéd fruit, piecing in second and fourth borders
33641-2	Aubergine geometric	1/8	Appliquéd cherries
33640-1	Navy print with squares	1/8	Appliquéd cherries
33640-3	Gold print with squares	3/4	First and third borders
33639-1	Navy stripe	1 5/8	Fifth border, binding
33637-3	Gold flowers	3/4	Appliquéd pineapples, pear leaves, piecing in second and fourth borders
33638-2	Lrg scale Aubergine print	1 1/4	Triangles around center applique, appliquéd grapes, apple, piecing in second and fourth borders
33636-1	Navy and Gold print	5/8	Appliquéd pears, piecing in second and fourth borders
33642-1	Navy dots	1/2	Piecing in second and fourth borders



# Fruit Bowl

Page 2

SKU	Description	Yardage	Use in Quilt
*32033-18	Cream tone on tone	1 1/2	Appliquéd background, piecing in fourth border
*32033-7	Green tone on tone	1/4	Appliquéd leaves, watermelon rind
*32034-7	Lt. green tone on tone	1/8	Appliquéd leaves
*32034-17	Black tone on tone	1/8	Appliquéd watermelon seeds
*32035-5	Pink tone on tone	1/8	Appliquéd watermelon

\* Mary's Blenders

## Cutting Directions

*IMPORTANT: Applique templates are not reversed and do not include seam allowances. It is recommended that templates be reversed and fusible applique techniques used.*

32033-18 Cream tone on tone

Cut (1) 23" square for background of center applique.

Cut (64) 4" squares. Cut each square once diagonally to make (128) triangles for pieced blocks in fourth border.

32033-7 Green tone on tone

Cut (2) each of applique templates D, E, F, I, K for pineapple leaves.

Cut (1) template M for watermelon rind.

32034-7 Light green tone on tone

Cut (2) each of applique templates G, H, J for pineapple leaves and grape leaves.

Cut (1) each of applique templates 1-6.

32034-17 Black tone on tone

Cut (1) 2" X 7" strip for watermelon seeds. Place under pink watermelon and use reverse applique to cut out seeds.

Option: Use black embroidery floss and lazy daisy stitches for seeds.

32035-5 Pink tone on tone

Cut (1) applique template N for watermelon. Cut slits for watermelon seeds and reverse applique, as desired.

33642-2 Aubergine dots

Make 10" of 1/4" stems, using applique technique of choice.

Make 20" of 1/8" stems, using applique technique of choice.

Option: Embroider these stems with a stem stitch.

33637-1 Navy flower print

Cut (1) applique template A for vase.



# Fruit Bowl

Page 3

33642-3 Gold dots

Cut (1) applique template B for band on vase.

33637-2 Aubergine flowers

Cut (8) 3 1/2" squares for piecing second border.

Cut (4) 4 3/4" squares for piecing blocks in fourth border.

Cut (1) applique template L for fruit on edge of watermelon.

Cut (1) of each template T, U, V for fruit.

33641-2 Aubergine geometric

Cut (3) template W for red cherries.

33640-1 Navy print with squares.

Cut (3) template W for blue cherries.

33640-3 Gold print with squares

Cut (2) strips 2" X 30 1/2" WOF for sides of first border.

Cut (2) strips 2" X 33 1/2" WOF for top and bottom of first border.

Cut (2) strips 2" X 39 1/2" WOF for sides of third border.

Cut (3) strips 2" WOF. Piece, as necessary, to make (2) strips 2" X 42 1/2" for top and bottom of third border.

33639-1 Navy stripe

Cut (5) 3 1/2" strips WOF.

Piece, as necessary, to make (2) 3 1/2" X 54 1/2" strips for sides of fifth border.

Piece, as necessary, to make (2) 3 1/2" X 60 1/2" strips for top and bottom of fifth border.

Cut (7) 2 1/2" strips WOF.

Piece, as necessary, to make 260" of binding.

33637-3 Gold flowers

Cut (2) template C for pineapples and (2) each templates Q and R for pear leaves.

Cut (20) 3 1/2" squares for piecing second border.

Cut (8) 4 3/4" squares for piecing blocks in fourth border.

33638-2 Large scale Aubergine print

Cut (2) 16" squares. Cut each square once diagonally to make (4) triangles for setting triangles for quilt center.

Cut (8) 3 1/2" squares for piecing second border.

Cut (8) 4 3/4" squares for piecing blocks in fourth border.

33636-1 Navy and Gold print

Cut (4) 3 1/2" squares for piecing second border.

Cut (4) 4 3/4" squares for piecing blocks in fourth border.

33642-1 Navy dots

Cut (8) 3 1/2" squares for piecing second border.

Cut (8) 4 3/4" squares for piecing blocks in fourth border.



# Fruit Bowl

Page 4

## Instructions

### 1. Center Applique

Referring to quilt picture and Applique Layout Diagram, arrange applique templates and stitch in place on the 23" beige tone on tone square, using machine applique techniques.

Press and trim appliquéd background to 21 3/4" X 21 3/4"

### 2. Setting Triangles

Sew the long side of each large scale aubergine print triangle to the sides of the center appliquéd square.

Press and trim. Quilt center should measure 30 1/2" X 30 1/2"

### 3. First Border

Sew strips for first border in place.

Press and trim. Quilt center should measure 33 1/2" X 33 1/2"

### 4. Second Border

Referring to quilt picture for color placement, sew two strips of (11) 3 1/2" squares together for the side borders. Stitch in place.

Referring to quilt picture for color placement, sew two strips of (13) 3 1/2" squares together for the top and bottom borders. Stitch in place.

Press and trim. Quilt center should measure 39 1/2" X 39 1/2"

### 5. Third Border

Sew strips for third border in place.

Press and trim. Quilt center should measure 42 1/2" X 42 1/2"

### 6. Fourth Border



Referring to block at left, sew (4) cream tone on tone triangles to each side of a 4 3/4" dark print square.

Make thirty-two blocks using (8) large scale aubergine print squares, (4) navy and gold print squares, (8) navy dots squares, (8) gold flowers squares and (4) aubergine flowers squares.

Press and trim each block to 6 1/2" X 6 1/2".

Referring to quilt picture, sew two strips of (7) 6 1/2" pieced blocks together for the side borders. Stitch in place.

Referring to quilt picture, sew two strips of (9) 6 1/2" pieced blocks together for the top and bottom borders. Stitch in place.

Press and trim. Quilt center should measure 54 1/2" X 54 1/2"

### 7. Fifth Border

Sew strips for sixth border in place.

Press and trim quilt center 60 1/2" X 60 1/2"

### 8. Quilt and bind, as desired.

**Enjoy!**

**Always look on our website before starting your project to see if there are any updates or corrections**

**Be sure to visit [www.windhamfabrics.com](http://www.windhamfabrics.com) to see the complete collection and to download this and other Free Projects**

**WINDHAM FABRICS**

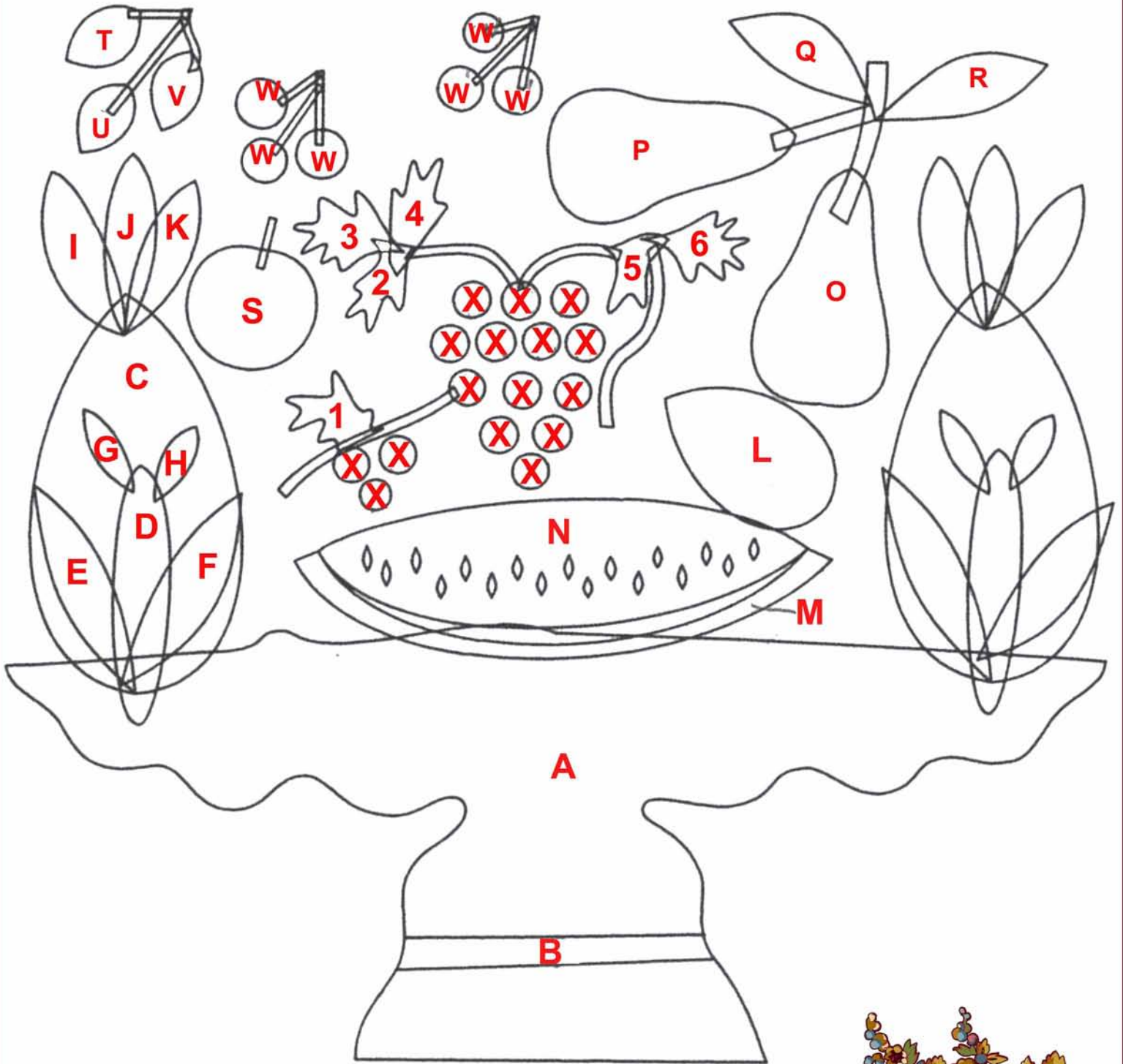


# Fruit Bowl

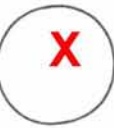
Page 5

TEMPLATES

APPLIQUE LAYOUT DIAGRAM



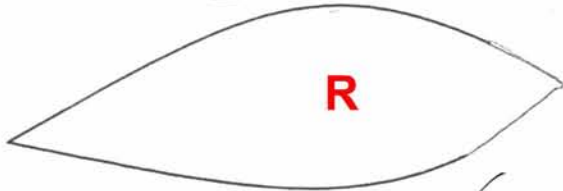
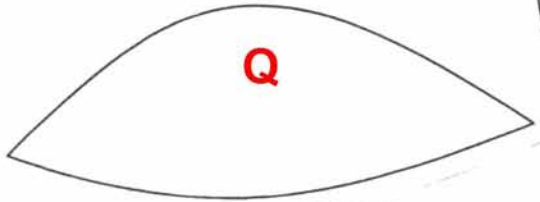
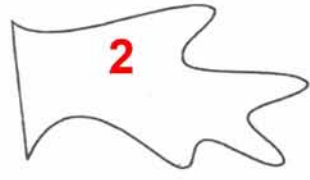
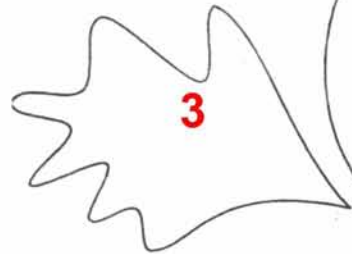
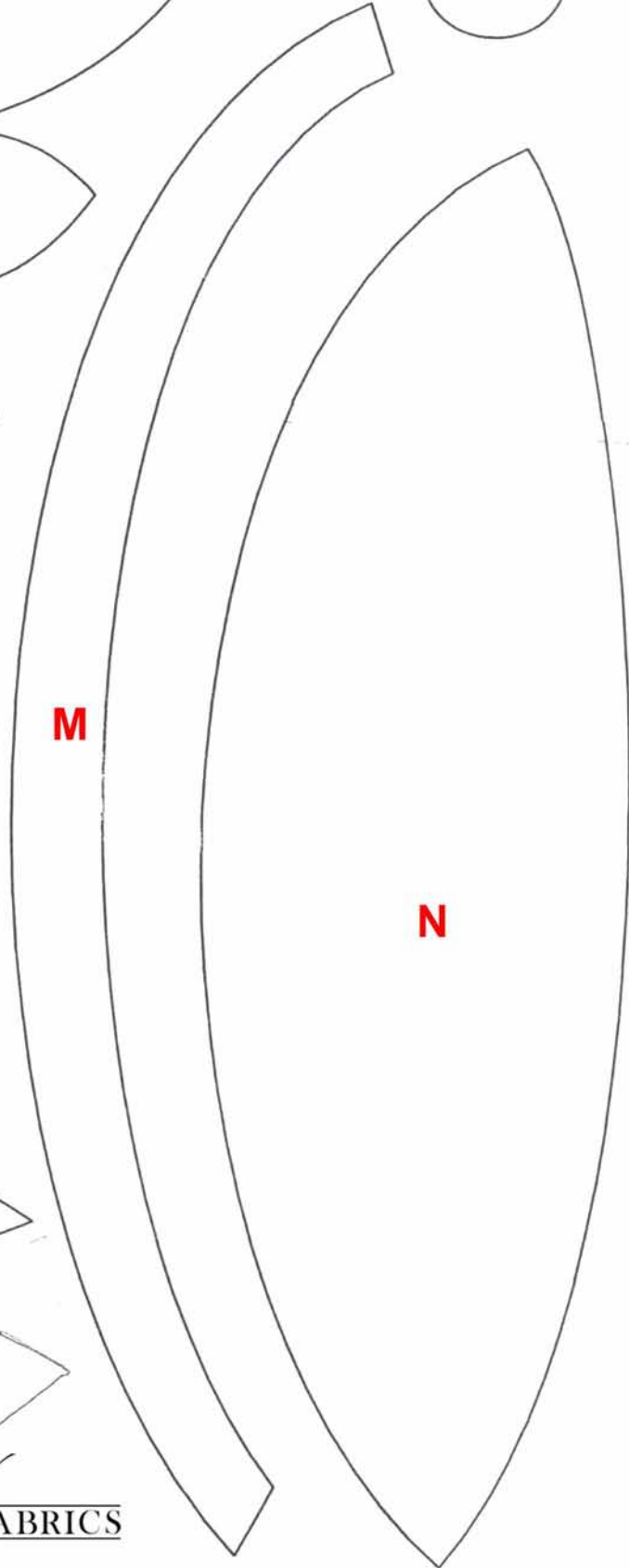
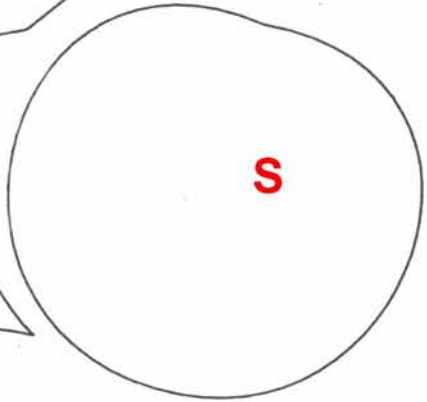
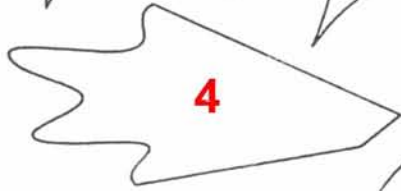
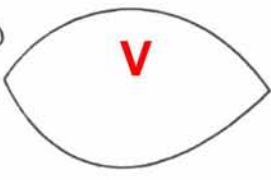
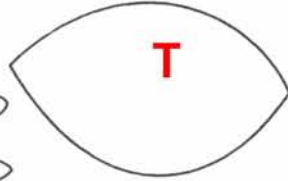
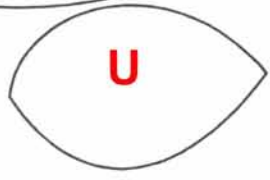
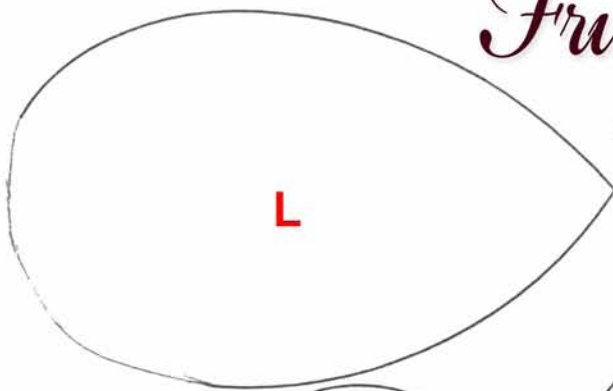
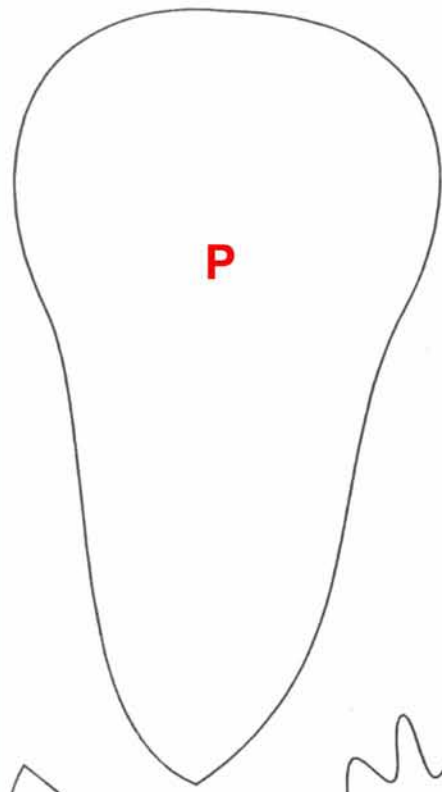
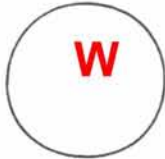
# Fruit Bowl



Page 6

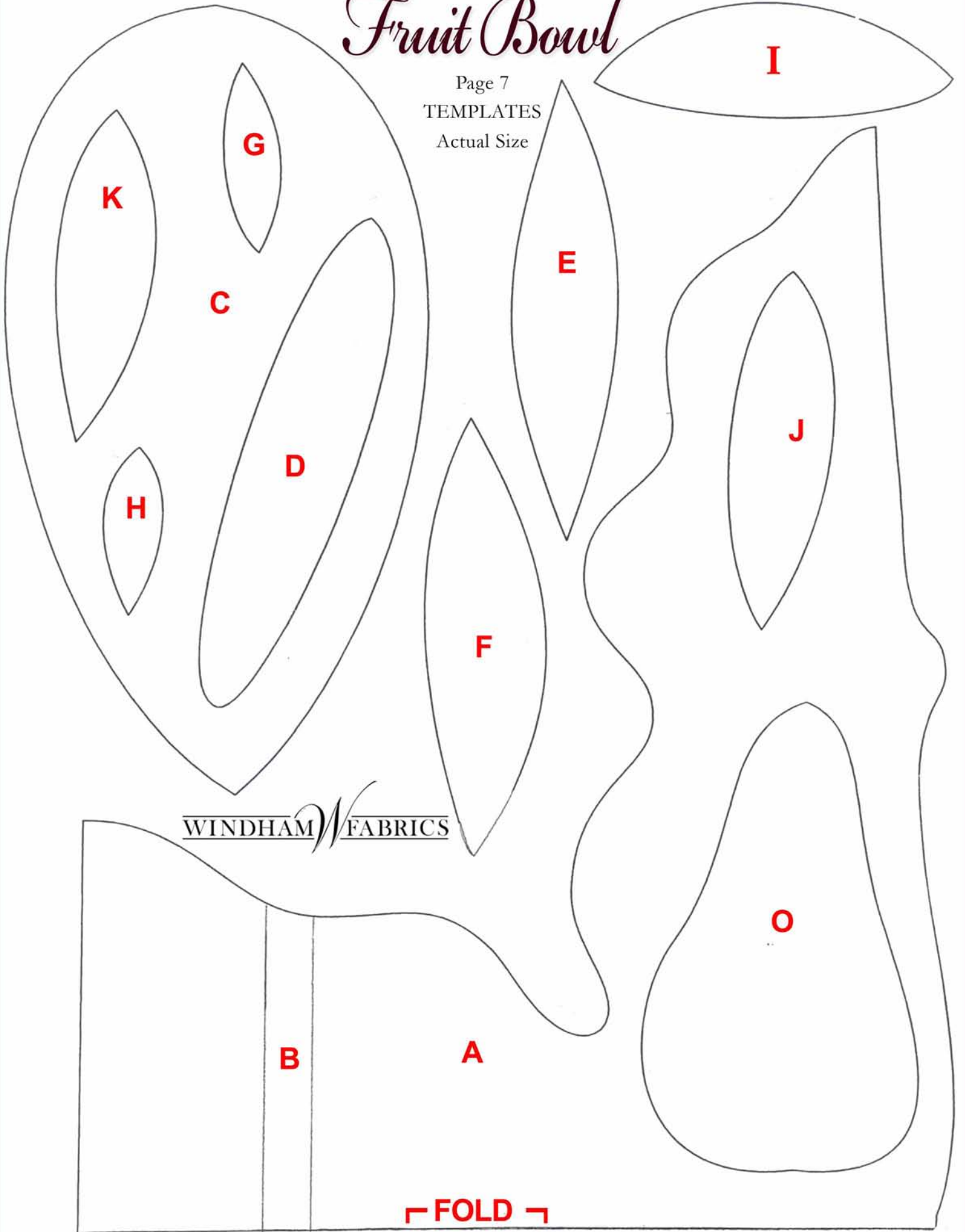
TEMPLATES

Actual Size



# Fruit Bowl

Page 7  
TEMPLATES  
Actual Size



WINDHAM FABRICS

FOLD