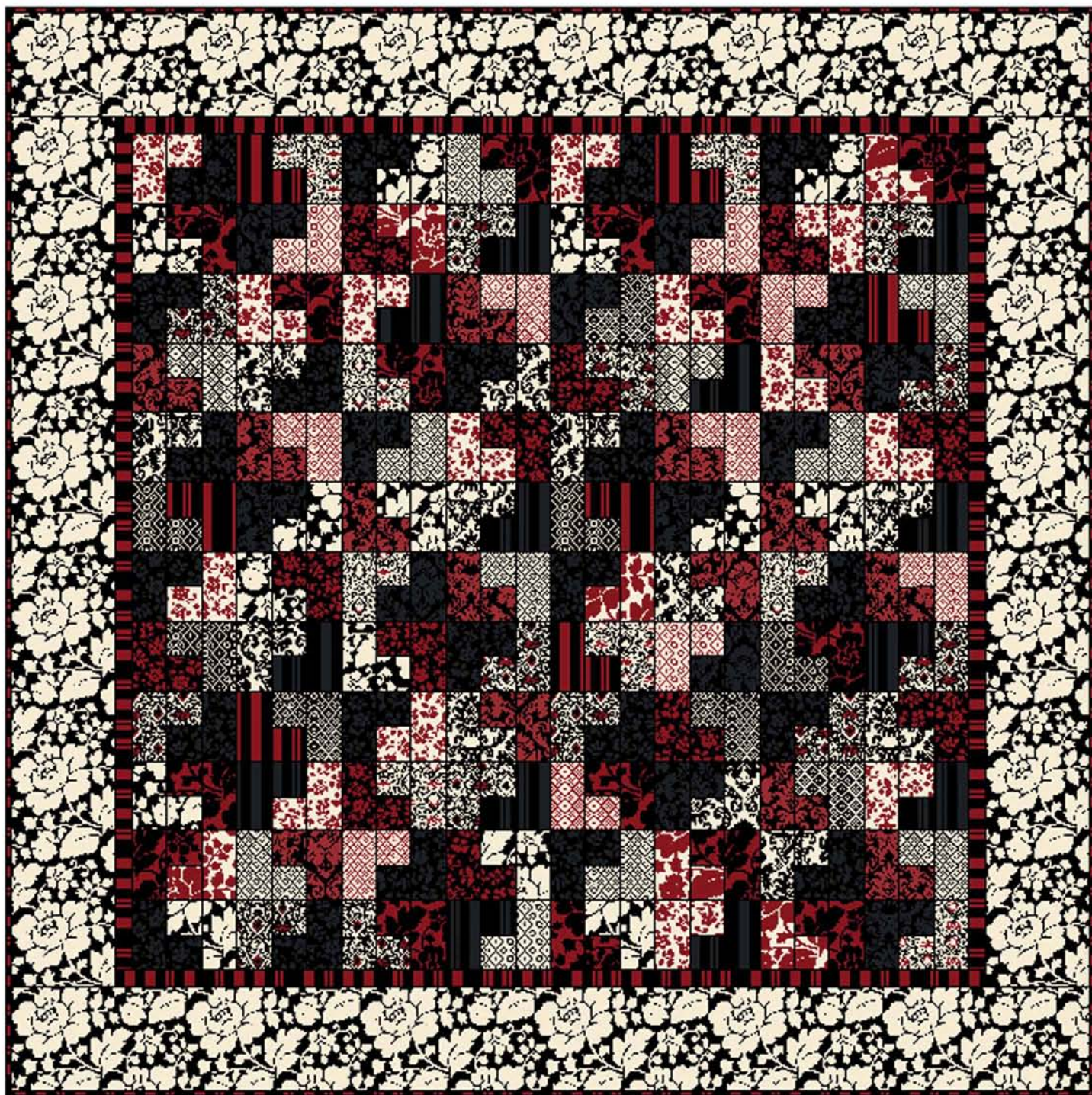


"For Toni"

Designed by Bethany Fuller of Grace's Dowry Quilts
Featuring the Toni Collection by Rosemarie Lavin
Size: 62 1/2" x 62 1/2"



WINDHAM FABRICS

812 Jersey Ave ~ Jersey City, NJ 07310 ~ 201.659.0444 ~ FAX: 201.659.9719
www.windhamfabrics.com email: retail@windhamfabrics.com



"For Toni"

Designed by Bethany Fuller of Grace's Dowry Quilts
Featuring the Toni Collection by Rosemarie Lavin
Size: 62 1/2" x 62 1/2"

Yardage Requirements

- 2 yds Outer Border (32122-1)
- 1 yd Inner Border & Binding (32124-3)
- 1/4 yd of 6 Darks (32126-3, 32126-5, 32124-5, 32123-3, 32123-5, 32122-3)
- 1/4 yd of 6 Lights (32122-1, 32122-2, 32123-4, 32125-4, 32126-2, 32127-4)
- 4 yds Backing

Cutting & Piecing Instructions

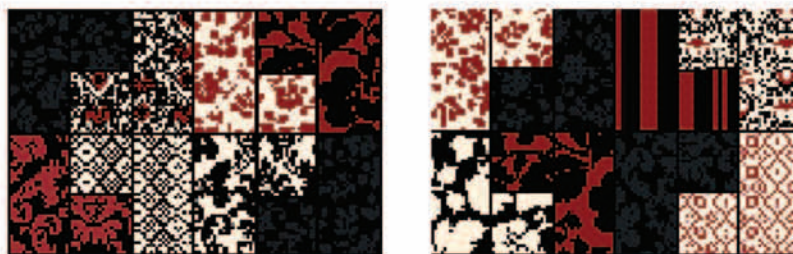
From Outer Border (32122-1) cut:
4 – 6 1/2" LENGTHWISE strips.

From Inner Border/Binding (32124-3), cut:
6 – 1 1/2" strips for Inner Border
2 1/2" bias strips for Binding

From EACH Dark and EACH Light, cut:
1 – 4 1/2" strip. Cut each strip into 16 – 2 1/2" x 4 1/2" rectangles.
1 – 2 1/2" strip.

Sew a Light and a Dark strip into a strip set. Make 6 sets.
Sub-cut these into 96 – 2 1/2" x 4 1/2" rectangles.

Piece rectangles and pairs of squares into blocks.
Make 12 with dark on the outsides and 12 with light.



Arrange into 6 rows of 4 blocks each. Measure quilt through the center and cut borders appropriately.
Press borders away from center.

Quilt, bind and enjoy!

Be sure to visit www.windhamfabrics.com to see the complete collection
and to download this and other Free Projects

