

Folk Art Townscape

Designed by Bethany Fuller

Featuring the Folk Art Village Collection for

Williamsburg



WINDHAM FABRICS

812 Jersey Ave ~ Jersey City, NJ 07310 ~ 201.659.0444 ~ FAX: 201.659.9719
www.windhamfabrics.com email: retail@windhamfabrics.com

Folk Art Townscape

Designed by Bethany Fuller

Size: 52" x 62"

Featuring the Folk Art Village Collection for

Williamsburg



31691-1



31690-X

Fabric Requirements:

1 $\frac{5}{8}$ yards 31695-6 for Outer Border

$\frac{3}{4}$ yard 31696-1 for Inner Border & Binding

1 $\frac{1}{4}$ yards 31690-X for Rows 4 & 8

1 $\frac{1}{4}$ yards 31691-1 for Rows 2 & 10

$\frac{1}{4}$ yard of 31698-3 (Rows 5 & 7)

1 yard 31693-7 for pinwheel background

(Rows 1 & 11) & applique setting triangles (Row 6)

$\frac{1}{2}$ yard 31696-3 for applique background (Row 6)

$\frac{3}{8}$ yard 31698-2 for pinwheels

(Rows 1 & 11) & leaves (Row 6)

$\frac{1}{4}$ yard 31698-1 for pinwheels (Rows 1 & 11)

$\frac{1}{4}$ yard of 31694-1, 31692-4 for applique (Row 6)

Fat 1/8's of the following for hourglasses (Rows 3 & 9):

31692-2, 31692-3, 31692-5, 31693-5, 31693-6, 31694-2,

31694-3, 31694-5, 31695-4, 31695-7, 31696-6, 31698-3, 31698-7



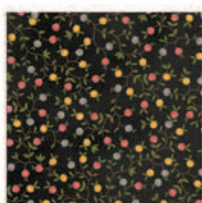
31696-1



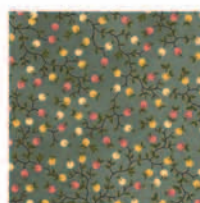
31696-3



31696-6



31693-5



31693-6



31693-7



31694-1



31694-2



31694-3



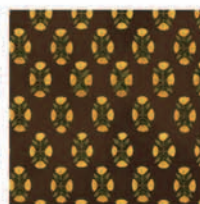
31694-5



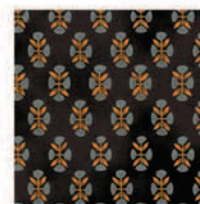
31692-2



31692-3



31692-4



31692-5



31695-4



31695-6



31695-7



31698-1



31698-2



31698-3



31698-7

WINDHAM FABRICS

Folk Art Townscape

Page 2

Instructions: (Rows are numbered from top to bottom)

From Outer Border fabric (31695-6) cut:

4 – 5 ½" LENGTHWISE strips

From Inner Border & Binding fabric (31696-1) cut:

5 – 1 ½" strips for Inner Border

6 – 2 ¼" strips for Binding

For Rows 4 & 8, from 31690-X, cut:

2 – 8 ½" LENGTHWISE strips. Trim to 40 ½".

For Rows 2 & 10, from 31691-1, cut:

2 – 4" LENGTHWISE strips. Trim to 40 ½".

For Rows 5 & 7, from 31698-3, cut:

2 – 1 ½" strips. Trim to 40 ½".

For Pinwheels (Rows 1 & 11), from 31693-7, cut:

3 – 3 ¾" strips; from these strips, cut:

32 – 3 ¾" squares. Cut in half once diagonally.

2 – 3 ¾" strips; from these strips, cut:

16 – 3 ¾" squares. Cut in half twice diagonally.

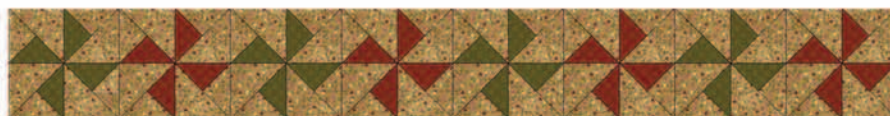
For Pinwheels, from 31698-1 & 31698-2, cut:

1 – 3 ¾" strip from each. Then cut these strips into

8 – 3 ¾" squares from each. Cut in half twice diagonally.



Sew quarter square triangles into pairs, one tan with one red/green. Press toward the red/green. Sew a half square to this unit to create a square. Sew 4 of these together to create 1 pinwheel block. Make 8 green and 8 red. Blocks should measure 5 ½".



For Appliqué Setting Triangles (Row 6), from 31693-7, cut:

1 – 9 ¼" strip; from this strip cut:

2 – 9 ¼" squares. Cut in half twice diagonally.

2 – 5" squares. Cut in half once diagonally.



WINDHAM FABRICS

Folk Art Townscape

Page 3

For Appliqué Backgrounds, from 31696-3, cut:

1 – 6 ¼" strip; from this strip, cut 5 – 6 ¼" squares. Trim to 6 ⅛" after appliqué is completed.

Cut Appliqué pieces from the following:

31698-2 for leaves

31692-4 for stems

31694-1 for flowers

(see templates on Page 4 & 5)



Large Block



Small Block

Using your favorite method of appliqué, make 3 large blocks and 2 small blocks.

Square blocks to 6 ⅛" when complete.

Set with side and corner triangles. Trim edges to ¼" seams to prepare for quilt assembly. Should measure 40 ½" in length.



Using the remaining fabrics, cut a total of 44 – 5" squares to make hourglass blocks. Pair fabrics and draw a line diagonally on the wrong side of one of the squares. Sew ¼" on both sides of the drawn line. Cut on drawn line. Press both halves toward the same fabric. Pair again with fabrics laying in opposite directions. Draw a diagonal line perpendicular to the sewn line and again sew ¼" on both sides of the drawn line. Cut on line and press seam to one side. Trim to 4 ⅛" square. Make 22 blocks.

Sew into 2 rows of 11 blocks.



Follow Quilt Picture for Assembly

Sew quilt rows together according to the numbering and the photo. Add borders, quilt and bind.

ENJOY!

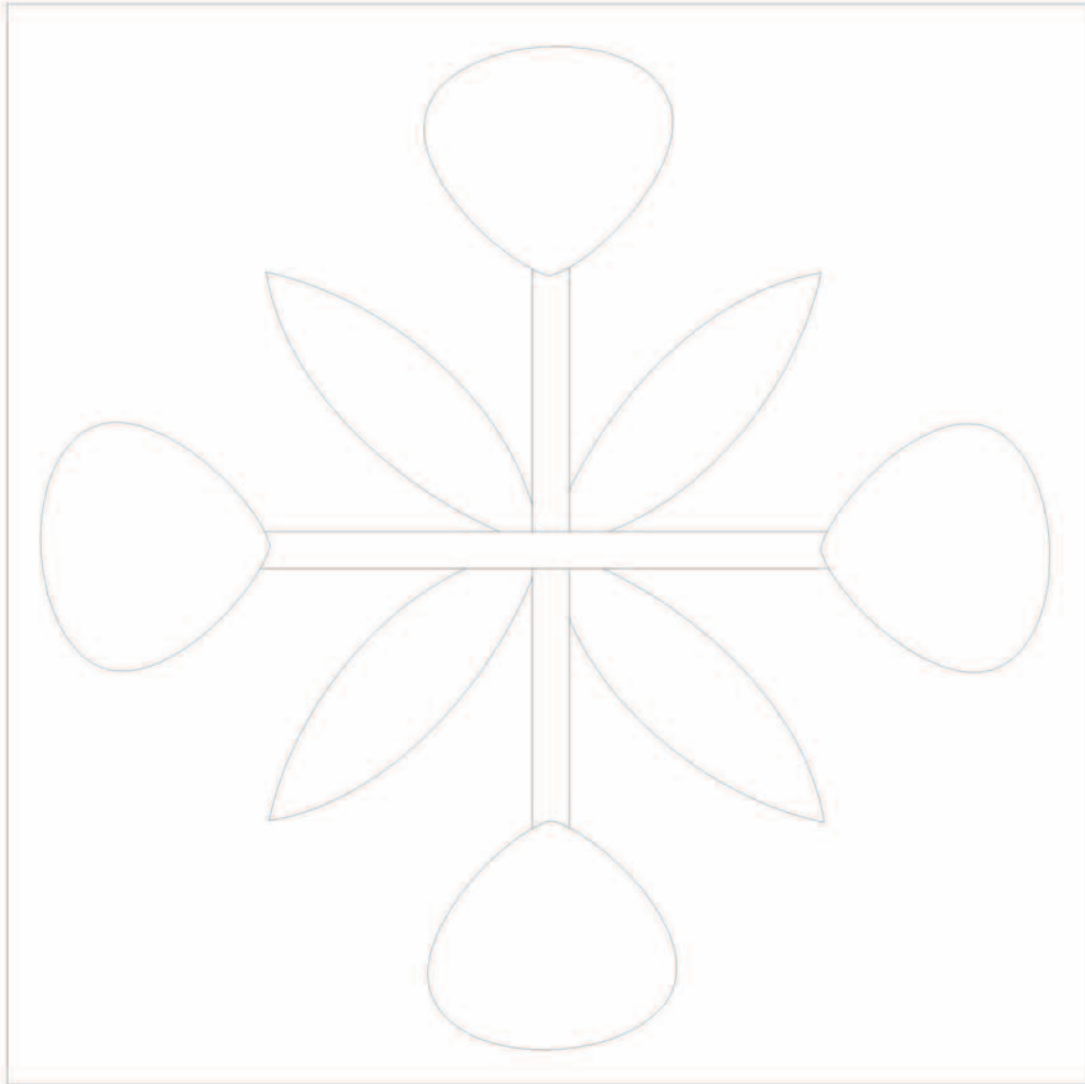


WINDHAM FABRICS

Folk Art Townscape

Page 4

TEMPLATE
Small Block

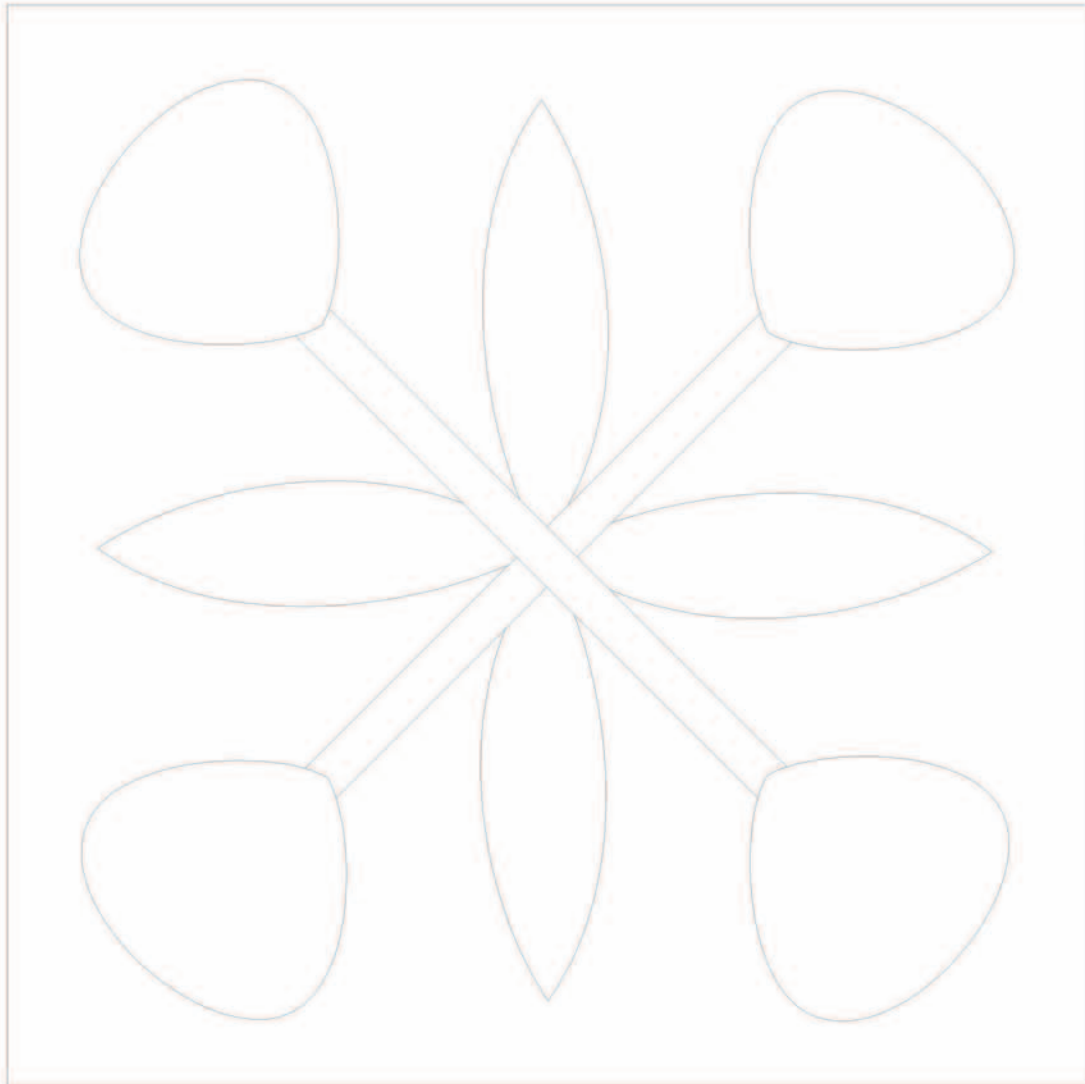


WINDHAM *W* FABRICS

Folk Art Townscape

Page 5

TEMPLATE
Large Block



Be sure to visit www.windhamfabrics.com to see the complete collection
and to download this and other Free Projects

WINDHAM *W* FABRICS