

Embroidered Garden

Designed by Erin Witt Designs ©

Featuring The Embroidered Garden Collection by Katie McRostie for Williamsburg

Size: 63" X 63"



WINDHAM FABRICS

812 Jersey Ave ~ Jersey City, NJ 07310 ~ 201.659.0444 ~ FAX: 201.659.9719
www.windhamfabrics.com email: retail@windhamfabrics.com

Embroidered Garden

Designed by Erin Witt Designs ©

Featuring The Embroidered Garden Collection by Katie McRostie for Williamsburg

Size: 63" X 63"

(12) 8 1/2" Hourglass Blocks

Level: Beginning

Fabric Requirements

32108-4 Green	1/2 Yard (third border, second border corner blocks)
32108-3 Rose	1 1/4 Yard (first and fifth borders, Hourglass blocks)
32110-6 Yellow	1/2 Yard (Hourglass blocks)
32110-5 Blue	1 3/4 Yard (Hourglass blocks, sixth border, binding)
32107-2 Brown	1/2 Yard (Hourglass blocks)
32109-2 Brown/Blue	1 3/4 Yard (seventh border)
32107-1 Cream	1/2 Yard (second border)
32106-X Multi Panel	1 Full Repeat of Panel (center of quilt, corner blocks of fourth border)



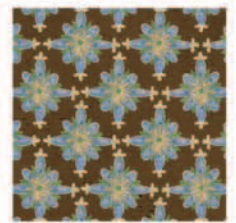
32106-X



32107-1



32107-2



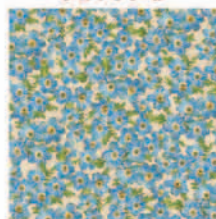
32109-2



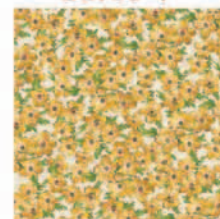
32108-3



32108-4



32110-5



32110-6



WINDHAM FABRICS

Embroidered Garden

Page 2

Cutting Directions

32106-X Multi (Panel)

Fussy cut large panel scene 13" High X 15 1/2" Wide for center of quilt.

Fussy cut (4) 9" X 9" large flower motifs for corner blocks of fourth border.

32108-3 Rose (first and fifth borders, Hourglass blocks)

Cut (2) 1 1/2" X 13" strips for sides of first border.

Cut (2) 2" X 17 1/2" strips for top and bottom of first border.

Cut (2) 3" X 43" strips for sides of fifth border.

Cut (2) 3" X 48" strips for top and bottom of fifth border.

Cut (2) 9 3/4" X 9 3/4" squares. Cut diagonally twice to make (8) triangles for Unit 1.

32107-1 Cream (second border)

Cut (2) 3" X 16" strips for sides of second border.

Cut (2) 3" X 17 1/2" strips for top and bottom of second border.

32108-4 Green (third border, second border corner blocks)

Cut (2) 2 1/4" X 21" strips for sides of third border.

Cut (2) 3" X 26" strips for top and bottom of third border.

Cut (4) 3" X 3" squares for second border corner blocks.

32107-2 Brown (Hourglass blocks)

Cut (3) 9 3/4" X 9 3/4" squares. Cut diagonally twice to make (12) triangles for Unit 1.

32110-6 Yellow 1/2 Yard (1/4 squares)

Cut (3) 9 3/4" X 9 3/4" squares. Cut diagonally twice to make (12) triangles for Unit 1.

32110-5 Blue (Hourglass blocks, sixth border, binding)

Cut (2) 3" X 48" strips for sides of sixth border.

Cut (2) 3" X 53" strips for top and bottom of sixth border.

Cut 2 1/2" strips. Piece, as necessary to make 265" of binding.

Cut (4) 9 3/4" X 9 3/4" squares. Cut diagonally twice to make (16) triangles for Unit 1.

32109-2 Brown/Blue (seventh border)

Cut (2) 5 3/4" X 53" strips for sides of seventh border.

Cut (2) 5 3/4" X 63 1/2" strips for top and bottom of seventh border.



WINDHAM *FABRICS*

Embroidered Garden

Page 3

Instructions

1. First Border -- Rose

Sew (1) 1 ½" X 13" strip to each side of center panel.

Sew (1) 2" X 17 ½" strip to top and (1) 2" X 17 ½" strip to bottom of center panel.

Quilt center should now measure 17 ½" X 16".

2. Second Border -- Cream

Sew (1) 3" X 16" strip to each side of quilt center.

Sew (1) 3" X 3" green square to each end of a 3" X 17 ½" cream strip. Repeat. Sew (1) strip to top and (1) strip to bottom of quilt center.

Quilt center should now measure 22 ½" X 21".

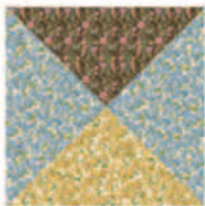
3. Third Border-- Green

Sew (1) 2 ¼" X 21" strip to each side of quilt center.

Sew (1) 3" X 26" strip to top and (1) 3" X 26" strip to bottom of quilt center.

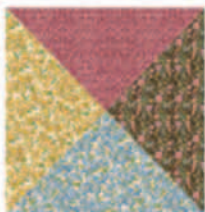
Quilt center should now measure 26" X 26".

4. Fourth Border – Hourglass Blocks, Fussy Cut squares



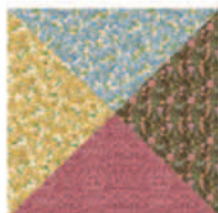
Block 1

Sew triangles together to create (4) Block 1's, as pictured on the left.



Block 2

Sew triangles together to create (4) Block 2's, as pictured on the left.



Block 3

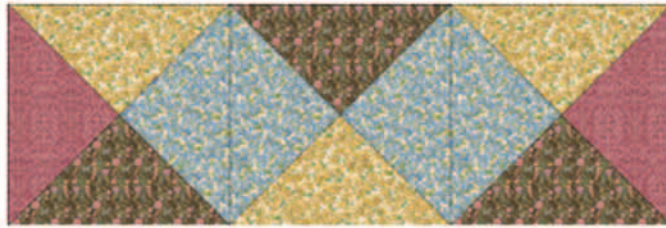
Sew triangles together to create (4) Block 3's, as pictured on the left.



WINDHAM FABRICS

Embroidered Garden

Page 4



Unit 1

Referring to to Unit 1 for block placement, sew together (1) Block1, Block 2, Block 3.

Repeat to create (4) Unit 1's.

Referring to quilt picture for correct rotation, sew (1) Unit 1 to each side of quilt center.

Referring to quilt picture for correct rotation, sew (1) 9" X 9" large flower motif to each side of (2) remaining Unit 1's.

Referring to quilt picture for correct rotation, sew (1) Unit 1 (with large flower motifs) to top and (1) Unit 1 (with large flower motifs) to bottom of quilt center.

Quilt center should now measure 43" X 43".

5. Fifth Border -- Rose

Sew (1) 3" X 43" strip to each side of quilt center.

Sew (1) 3" X 48" strip to top and (1) 3" X 48" strip to bottom of quilt center.

Quilt center should now measure 48" X 48".

6. Sixth Border -- Blue

Sew (1) 3" X 48" strip to each side of quilt center.

Sew (1) 3" X 53" strip to top and (1) 3" X 53" strip to bottom of quilt center.

Quilt center should now measure 53" X 53".

7. Seventh Border -- Brown/Blue

Sew (1) 5 3/4" X 53" strip to each side of quilt center.

Sew (1) 5 3/4" X 63 1/2" strip to top and (1) 5 3/4" X 63 1/2" strip to bottom of quilt center.

Quilt center should now measure 63 1/2" X 63 1/2".

Quilt and bind, as desired.

ENJOY!!

Be sure to visit www.windhamfabrics.com to see the complete collection
and to download this and other Free Projects



WINDHAM FABRICS