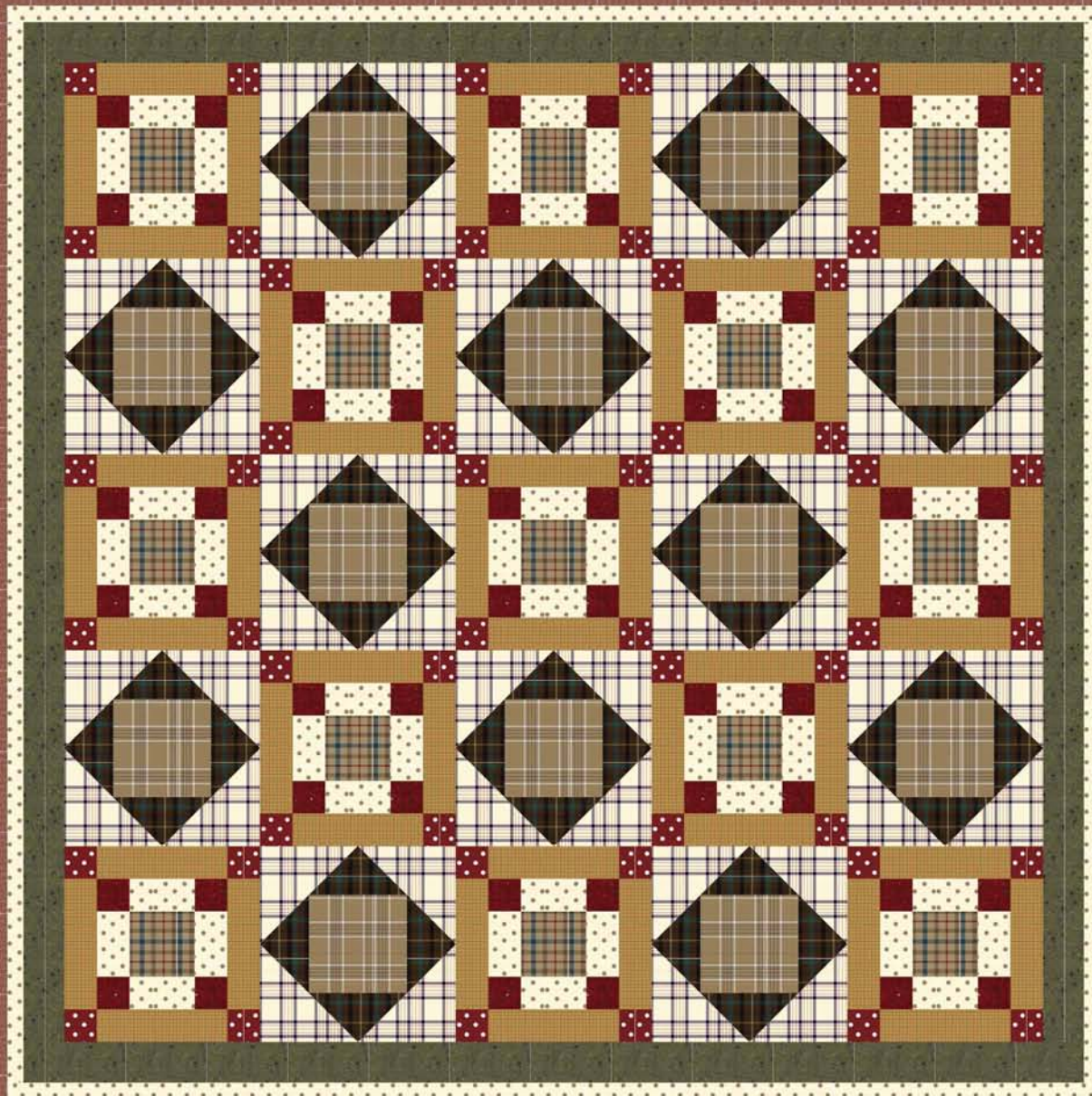


“CRISS CROSS”

Designed by Jean Ann Wright

Featuring the Flannel Elements Collections from Windham Fabrics



WINDHAM FABRICS



812 Jersey Ave ~ Jersey City, NJ 07310 ~ 201.659.0444 ~ FAX: 201.659.9719
www.windhamfabrics.com email: retail@windhamfabrics.com

“CRISS CROSS”

Designed by Jean Ann Wright
Featuring fabric from the Flannel Elements Collection
Block Size: 12" / Quilt Size: 81" x 81"

Fabric Requirements and Cutting

*All border measurements are the exact length required plus seam allowances.
WOF refers to width of fabric, approximately 42" wide.*

3/8 yd. Fabric A – 31603-3 Red with White Dots (Criss Cross blocks)
Cut 52 squares 2½" x 2½".

1 yd. Fabric B – 31603-7 Cream with Tan Dots (Criss Cross blocks, middle border)
Cut 8 strips 1½" x WOF, pieced to make the following:
2 borders 1½" x 66½"
2 borders 1½" x 64½".
Cut 52 rectangles 2½" x 4½".

1 yd. Fabric C – 31609-6 Yellow Checks (Criss Cross blocks)
Cut 52 rectangles 2½" x 8½".

½ yd. Fabric D – 31610-4 Tan Plaid (Square in a Square blocks)
Cut 12 squares 6½" x 6½".

1¼ yds. Fabric E – 31610-7 Cream Plaid (Square in a Square blocks)
Cut 24 squares 7" x 7", cut in half diagonally to make 48 half-square triangles.

2 yds. Fabric F – 31612-3 Red Stripe (outer border)
Cut (8) strips 8" x WOF, pieced to make the following:
2 borders 8" x 81½".
2 borders 8" x 66½".

3/8 yd. Fabric G – 31613-3 Red Tweed with Spots (Criss Cross blocks)
Cut 52 squares 2½" x 2½".

5/8 yd. Fabric H – 31613-5 Green Tweed with Spots (inner border)
Cut (6) strips 2½" x WOF, pieced to make the following:
2 borders 2½" x 64½".
2 borders 2½" x 60½".

3/8 yd. Fabric I – 31615-4 Tan/Blue Plaid (Criss Cross blocks)
Cut 13 squares 4½" x 4½".

3/4 yd. Fabric J – 31615-9 Brown Plaid (Criss Cross blocks)
Cut 12 squares 7¼" x 7¼", cut in half diagonally twice to make
48 quarter-square triangles.

Backing Fabric

7½ yds. 31605-3 Red Big Checks, cut into 3 panels 30" x 89". Join panels.

“CRISS CROSS”

Page 2



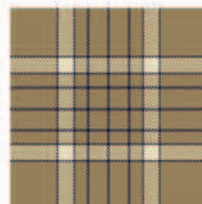
A-31603-3



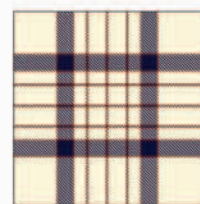
B-31603-7



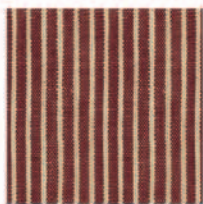
C-31609-6



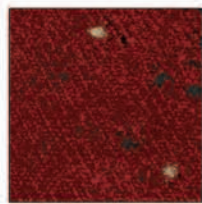
D-31610-4



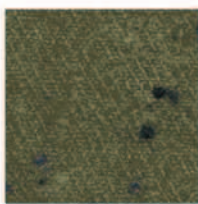
E-31610-7



F-31612-3



G-31613-3



H-31613-5



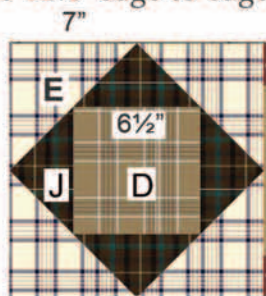
I-31615-4



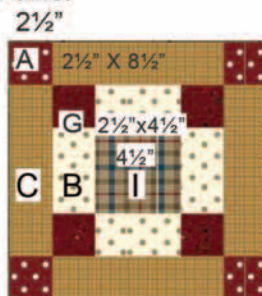
J-31615-9

Criss Cross Blocks:

1. Refer to the block diagram. Sew a fabric B rectangle to opposite sides of a fabric I square. Sew fabric G squares to ends of 2 fabric B rectangles. Sew these units to top and bottom of block. Sew a fabric C rectangle to sides of block. Sew fabric A squares to ends of 2 C rectangles. Sew these to top and bottom. Block should measure 12½” edge to edge. Make 13 blocks like this.



12”Criss Cross - Make13



12” Square Block - Make 12

Square in a Square Blocks:

2. Center and sew fabric J quarter-square triangles to sides of a fabric D square. Press seam allowances away from the center square. Fabric E half-square triangles are cut slightly too large to allow for trimming. Center and sew an E triangle to each side of block. Press. Block should measure 12½” edge to edge. Trim if needed.

Quilt Assembly

3. Refer to the quilt illustration. Join the blocks in 5 rows of 5 blocks each, alternating blocks as shown. Press seam allowances between blocks toward the Criss Cross blocks. Join the rows.

4. Sew shorter fabric H borders to sides. Trim even with quilt if needed. Sew longer fabric H borders to top and bottom. Repeat with fabric B and fabric F borders.

Finishing

5. Layer and baste the backing, batting, and quilt top. Quilt in the ditch around all patches. Quilt a motif of your choice in outer border and the center squares of the Square in a Square blocks.

6. Sew binding strips together end to end. Fold in half lengthwise and press fold line. Align raw edges of binding to raw edges of quilt top. Sew in place. Turn folded edge to back and stitch in place.

ENJOY!

Be sure to visit www.windhamfabrics.com to see the complete collection and to download this and other Free Projects

WINDHAM FABRICS