

"Crazy Mary"

Designed by Mary Koval and Theresa Leppert
Featuring the Redworks Collection by Mary Koval

Size: 63" x 72"



Feel free to download additional copies of this and other projects by visiting
our website: www.windhamfabrics.com

WINDHAM FABRICS

812 Jersey Ave ~ Jersey City, NJ 07310 ~ 201.659.0444 ~ FAX: 201.659.9719
www.windhamfabrics.com email: retail@windhamfabrics.com



"Crazy Mary"

Designed by Mary Koval and Theresa Leppert
Featuring the Redworks Collection by Mary Koval
Size: 63" x 72"



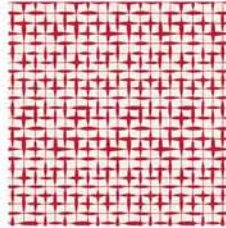
33591-1



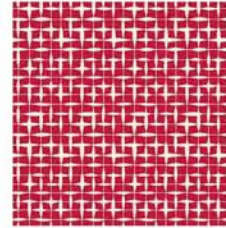
33592-1



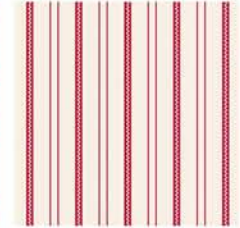
33592-2



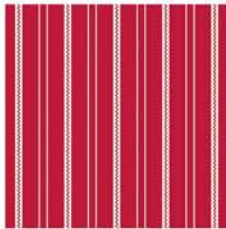
33593-1



33593-2



33594-1



33594-2



33595-1



33595-2



33596-1



33596-2

Fabric Requirements:

- 1 3/4 yards color # 33592-2 red
- 1 yard color #33594-2 red
- 1/3 yard of colors 33596-2 red, 33596-1 cream, 33595-2 red, 33595-1 cream, 33594-1 cream, 33593-2 red, 33593-1 cream and 33591-1 cream
- 1 fat quarter of 33592-1 cream

Crazy quilt blocks:

You may start with a fabric foundation (no bigger than 12" x 12") but this is not necessary. Begin by fussy cutting a motif from fabric 33591-1, it can have as many as 5 sides. All the sides need to be straight edges. Add a patch to one side using 1/4" seam allowance. Keep adding patches and cutting away excess fabric from previous patches. Continue adding patches till you reach the desired size. All patches should have straight edges. Trim square to 9 1/2" x 9 1/2"

Repeat until you have a total of (30) 9 1/2" blocks.

Join blocks to make center





"Crazy Mary"

Page 2

Borders:

For inner border

Cut (2) 4" strips length of the fabric. Sew to top and bottom. Cut (2) 4 1/2" strips and sew to each side.

Second border

Cut (224) 2 1/2" squares from all the fabrics and assemble into strips in a random layout.

Sew one strip to the top and bottom of the quilt then add the side borders.

Third border

Cut 4" strips length of the fabric to add to top and bottom borders then add the side borders. Piece fabric if necessary to make length or use left over fabric for the first border.

Quilt and Bind, as desired.

ENJOY!

When in Bedford, PA. be sure to visit:

**Mary's Quilt Shop
113 West Pitt Street
Bedford, Pa. 15522**

814-310-2278

marysquilshop@comcast.net

**Always look on our website before starting your project to see
if there are any updates or corrections**

Be sure to visit www.windhamfabrics.com to see the complete collection
and to download this and other Free Projects



WINDHAM FABRICS