

Crazy For Shelburne

Designed by Karen Witt © Reproduction Quilts

Featuring the Crazy for Shelburne Collection by Shelburne Museum

Size: 84" x 84"



Check www.windhamfabrics.com Free Project section to see if there are any pattern updates before you start your quilt

WINDHAM FABRICS

812 Jersey Ave ~ Jersey City, NJ 07310 ~ 201.659.0444 ~ FAX: 201.659.9719
www.windhamfabrics.com email: retail@windhamfabrics.com

Crazy For Shelburne

Designed by Karen Witt © Reproduction Quilts
Featuring the Crazy for Shelburne Collection by Shelburne Museum

Size: 84" x 84"

Block Size: 12" (16) Block 1 / (13) Block 2

Skill Level: Beginner / Intermediate



34227-1



34228-1



34228-2



34228-3



34231-2



34231-3



32033-13



34226-X

Fabric Requirements

- 34227-1 Red Print – 3/4 Yard (Block 2)
- 34228-2 Black – 7/8 Yard (Block 2)
- 34231-2 Black Print – 1 Yard (Block 1)
- 34228-3 Gold – 1 3/4 Yards (Block 1, Block 2)
- 34231-3 Gold Print – 2 Yards (Border)
- 34228-1 Red – 2 Yards (Border, Block 1)
- 32033-13 Tan (Mary's Blenders) – 2 Yards (Block 1, Block 2)
- Backing: 5 yards - 34226-X

Cutting Instructions

- 34227-1 Red Print – 3/4 Yard (Block 2)
Cut (104) 2 1/2" squares for block 2.
- 34228-2 Black -- 7/8 Yard (Block 2)
Cut (13) 4 1/2" squares for block 2.
Cut (13) 5 1/4" squares. Cut each square twice diagonally to make (52) triangles for block 2.
- 34228-3 Gold – 1 1/2 Yards (Block 1, Block 2)
Cut (26) 4 7/8" squares. Cut each square once diagonally to make (52) triangles for block 2.
Cut (32) 4 7/8" squares. Cut each square once diagonally to make (64) triangles for block 1.

Crazy For Shelburne

Page 2

34231-2 Black Print – 1 ¼ Yards (Block 1)

Cut (64) 2 ½” squares for block 1.

Cut (32) 4 7/8” squares. Cut each square once diagonally to make (64) triangles for block 1.

34228-1 Red – 2 Yards (Border)

Cut (4) 6 ½” X Length of fabric strips for border. *Cut these first from the length of fabric.

Cut (16) 5 ¼” squares. Cut each square twice diagonally to make (64) triangles for block 1.

Cut (16) 4 ½” squares for block 1.

34231-3 Gold Print – 2 Yards (Border)

*All strips are cut the length of fabric (parallel to the selvage).

Cut (8) 3 ½” x length of fabric strips for border.

Cut (4) 2 ½” strips the length of fabric. Seam as necessary to make 360” of binding.

32033-13 Tan (Mary’s Blenders) – 2 Yards (Block 1, Block 2)

Cut (104) 2 ½” squares for block 2.

Cut (13) 5 ¼” squares. Cut each square twice diagonally to make (52) triangles for block 2.

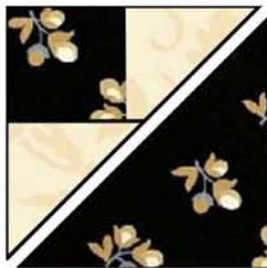
Cut (64) 2 7/8” squares. Cut each square once diagonally to make (128) triangles for block 1.

Cut (16) 5 ¼” squares. Cut each square twice diagonally to make (64) triangles for block 1.

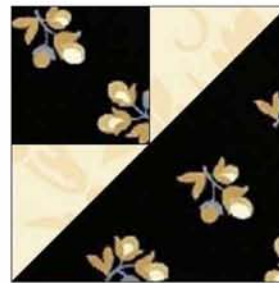
Block 1 -- Instructions

Construct (64) Unit 1's.

Sew two (2 7/8”) triangles of tan to a 2 ½” square of the black print. Sew this unit to a (4 7/8”) triangle of the black print.



Press and trim each unit to 4 ½” square.



Construct (64) Unit 2's.

Sew a tan (5 ¼”) triangle to a red (5 ¼”) triangle.

Sew this unit to a gold (4 7/8”) triangle.



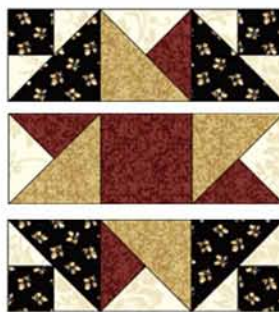
Press and trim each unit to 4 ½” square.

Crazy For Shelburne

Page 3

Assemble (4) Unit 1's, (4) Unit 2's, and (1) 4 1/2" red square in row as shown and sew rows together to create (16) Block 1's.

Press and trim each Block 1 to 12 1/2" square.
Repeat to make (16) Block 1's.



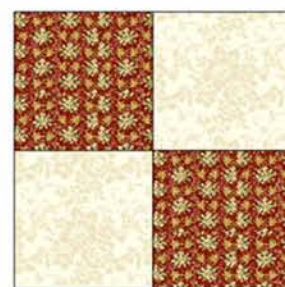
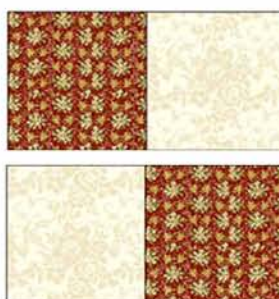
BLOCK 1

Block 2 – Instructions

Construct (52) Unit 3's.

Sew your red print and tan 2 1/2" squares in groups of two and press to the red. Sew these units together to create 4-patch units as shown.

Press and trim each unit to 4 1/2" square.



Construct (52) Unit 4's.

Using the same method you used in Unit 2, construct 52 unit 4's.

Press and trim each unit to 4 1/2" square.



Assemble (4) Unit 3's, (4) Unit 4's, and (1) 4 1/2" black square in rows as shown and sew rows together to create (13) Block 2's.

Press and trim each unit 2 to 12 1/2" square.
Repeat to make (13) Block 2's.



BLOCK 2

Crazy For Shelburne

Page 4

Quilt Center Assembly

1.



Referring to the above diagram, assemble (3) Block 2's and (2) Block 1's to create a strip. Repeat to make 3 strips for the top, middle and bottom rows of the quilt center.

2.



Referring to above diagram assemble (3) Block 1's and (2) Block 2's to create a strip. Repeat to make 2 for the second and fourth rows of the quilt center.

3.

Referring to quilt picture, sew rows together.
Quilt center should now measure 60 1/2" square.

Border Unit Instructions

Measure all sides of your quilt center – in a perfect world these should measure 60 1/2". If they do not, take the average of the 4 sides and cut your border strips to this length. You will need (4) red 4 1/2" strips and (8) gold print 3 1/3" strips.



Sew (1) gold print border strip to each side of a red border strip. Repeat to make (4) border units.

Sew (1) Block 1 to each end of two of the border units to make the longer top and bottom borders.

Sew (1) short border unit to each side of quilt center.

Sew (1) long border unit to the top and (1) long border unit to the bottom of quilt top.

Quilt top should now measure 84 1/2" square.

Quilt and bind as desired.

ENJOY!

If you have questions about this quilt, please contact Karen at:

karen@reproductionquilts.com

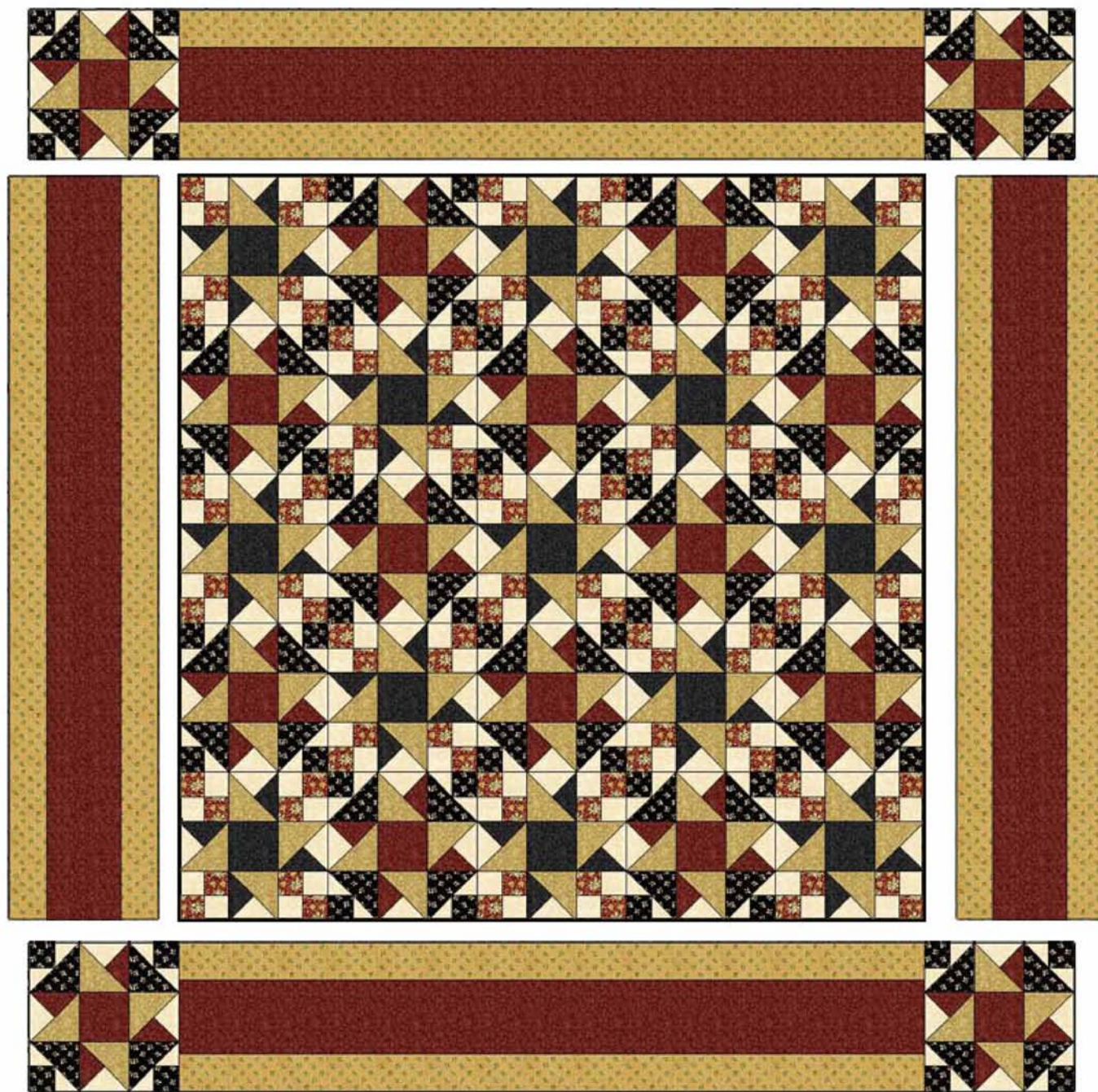
To see more of Karen Witt's work visit:

www.reproductionquilts.com

Crazy For Shelburne

Page 5

QUILT ASSEMBLY DIAGRAM



Be sure to visit www.windhamfabrics.com to see the complete collection and to download this and other Free Projects