

# “Country Sampler”

Size: 86<sup>3</sup>/<sub>4</sub>” x 75<sup>1</sup>/<sub>2</sub>”

Designed by Jeanne Horton

Featuring the Simpler Tymes Collection by Jeanne Horton

REVISED



**WINDHAM FABRICS**

812 Jersey Ave ~ Jersey City, NJ 07310 ~ 201.659.0444 ~ FAX: 201.659.9719  
www.windhamfabrics.com ~ email: retail@windhamfabrics.com

# “Country Sampler”

Designed by Jeanne Horton  
Featuring the Simpler Tymes Collection by Jeanne Horton  
Size: 86<sup>3</sup>/<sub>4</sub>” x 75<sup>1</sup>/<sub>2</sub>”  
Quilt is a four patch

## Fabric Requirements:

- (44) 1/8 yard cuts from the line assorted (to achieve an old time look)
- 3 yards setting fabric #31593-7 Tan
- 2<sup>1</sup>/<sub>2</sub> yards for the borders #31591-2 Blue
- 5/8 yard for binding #31591-2 Blue
- 6 yards for backing

## Cutting Instructions:

From the (44) fat 1/8 yard cuts, cut (3) 2<sup>1</sup>/<sub>2</sub>” x 21” strips

From the 2<sup>1</sup>/<sub>2</sub> yard floral setting fabric cut:

(17) 4<sup>1</sup>/<sub>2</sub>” x width of fabric strips, sub cut into (143) 4<sup>1</sup>/<sub>2</sub>” setting squares, also cut (2) 4<sup>1</sup>/<sub>2</sub>” squares diagonally once to yield your 4 corner triangles.



(3) 7<sup>3</sup>/<sub>4</sub>” x width of fabric strips, sub cut into (12) 7<sup>3</sup>/<sub>4</sub>” squares cut diagonally twice for 48 side setting triangles.



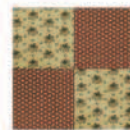
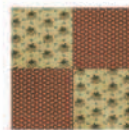
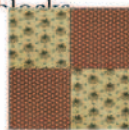
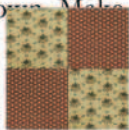
Sewing the 4-patch blocks, taking 2 different color fabric strips sew them together, making a good mix of fabric strip sets, Assemble as shown below.



Cut (8) 2<sup>1</sup>/<sub>2</sub>” x 4<sup>1</sup>/<sub>2</sub>” units from each set.



Assemble 4 blocks from each strip set as shown. Make 169 blocks.



Assemble the quilt as shown. Measure your quilt before cutting the borders - ours measured 78<sup>3</sup>/<sub>4</sub>” x 67<sup>1</sup>/<sub>2</sub>”.

Using the 2 1/2 yard piece #31591-2 Blue fabric; we cut our top & bottom borders 8” x 67<sup>1</sup>/<sub>2</sub>” and our side borders 8” x 78<sup>3</sup>/<sub>4</sub>” trimming off the extra length. Our quilt was quilted with a cross hatch pattern and the #31591- 2 Blue stripe print was used for the binding.

## ENJOY!

Learn more about Jeanne Horton by visiting [www.SGCountrysampler.com](http://www.SGCountrysampler.com)  
or visit her store:

### Country Sampler

133 East Jefferson St

Spring Green, WI 53588

Be sure to visit [www.windhamfabrics.com](http://www.windhamfabrics.com) to see the complete collection  
and to download this and other Free Projects

**WINDHAM FABRICS**