

“CONSTITUTION OAK”

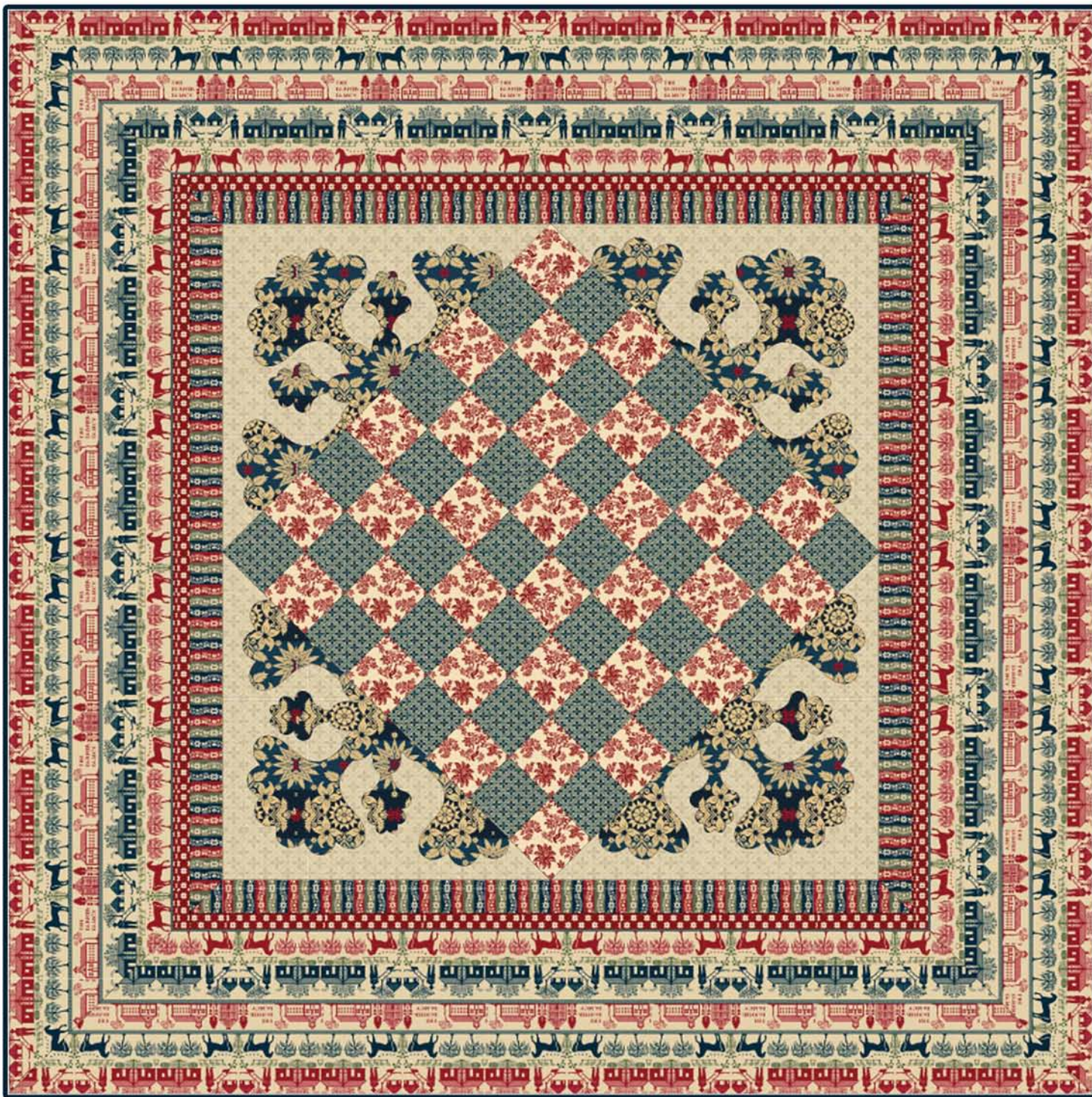
Designed by Debby Kratovil

REVISED

Featuring The Farmer Fancy Collection in

Association with the National Museum of the American Coverlet

Size: 64" x 64"



WINDHAM FABRICS

812 Jersey Ave ~ Jersey City, NJ 07310 ~ 201.659.0444 ~ FAX: 201.659.9719
www.windhamfabrics.com email: retail@windhamfabrics.com

“CONSTITUTION OAK”

Designed by Debby Kratovil
Featuring The Farmer Fancy Collection in
Association with the National Museum of the American Coverlet
Block Size (center one-patch group): 24" x 24"
Quilt Size: 64" x 64"

Fabric Requirements

- 1/2 yd: 31907-6 Cream (large setting triangles)
- 1/2 yd: 31902-3 Cream (small squares in center)
- 1/2 yd: 31907-1 Blue (small squares in center)
- 1/2 yd: 31906-1 Blue (appliqué patches in corners)
- 1/3 yd: 31909-1 Blue (first border)
- 1/4 yd: 31901-2 Red (second border)
- 3 5/8 yd: 31908-3 (outer border)
- 1/2 yd: 31901-1 Blue

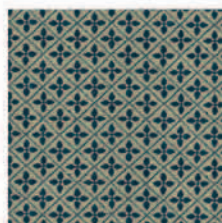
1 yd lightweight fusible webbing; template material;
matching thread for appliqué
4 yards backing fabric



31907-6



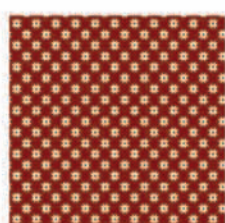
31902-3



31907-1



31909-1



31901-2



31901-1



31906-1



31908-3

Cutting

From the 31907-6 Cream, cut:
2 squares 18" x 18"; re-cut each into two triangles

From the 31907-1 Blue, cut:
3 strips 3-1/2" x wof

From the 31902-3 Cream, cut:
3 strips 3-1/2" x wof



WINDHAM FABRICS

"CONSTITUTION OAK"

Page 2

Cutting con't:

From the 31906-1 Blue, cut:

- 4 rectangles 4" x 7" for appliqué Patch A
- 8 rectangles 3-1/2" x 4-1/2" for appliqué Patch B
- 8 rectangles 5" x 8" for appliqué 1/2 Patch C
- 4 squares 8" x 8" for appliqué Patch C

From the 31909-9 Blue (stripe), cut:

- 4 strips 2-1/2" x wof

From the 31901-2 Red, cut:

- 4 strips 1-1/2" x wof

From the 31908-3, cut:

- 4 strips 12 1/2" x 65" ALONG THE LENGTH OF THE SELVEDGE (so as to capture the repeat of the design).

Note that the blue strip under the horses will be captured in the seam allowance, as will the blue print at the top of the house and tree row. In order to make the best use of the fabric repeats, a scant 1/4" will be taken, cutting down the center of the blue strip so as to share that print strip with each 7-1/4" cut.

From the 31901-1 Blue, cut 6 strips 2-1/4" x wof for binding

Sewing

1. Sew together two strips 31905-1 Blue and two strips 31902-3 Cream, alternating Blue-Cream-Blue-Cream. Press seams toward the blue as shown in Diagram 1.

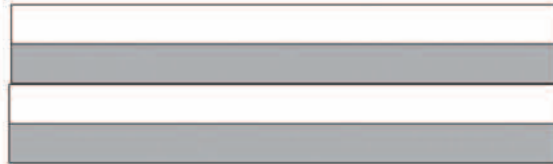


Diagram 1

2. Cut apart into twelve 3-1/2" wedges as shown in Diagram 2.



Diagram 2

3. Sew two wedges together as shown in Diagram 3, resulting in a row of 8 squares (alternating blue & cream squares). Make 6 of these rows.

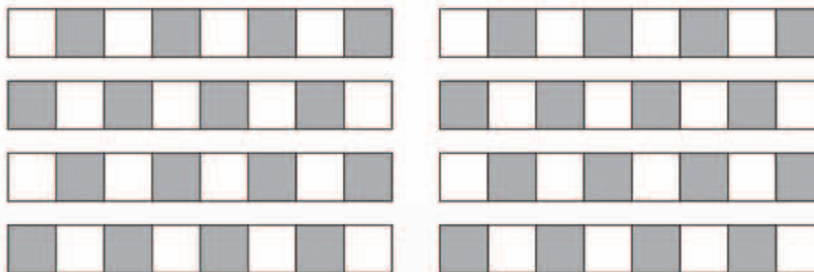


Diagram 3



WINDHAM FABRICS

"CONSTITUTION OAK"

Page 3

4. Using the remaining blue and cream strips, sew together as shown in Diagram 4.

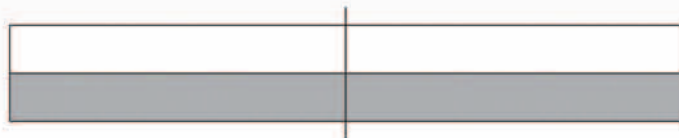


Diagram 4

Cut apart into two 3-1/2" x 18" segments. Seam these together into a 4 strip unit and then cut into 4 wedges (as you did in Step 2 above). See Diagram 5. Make two more 8 square strips.

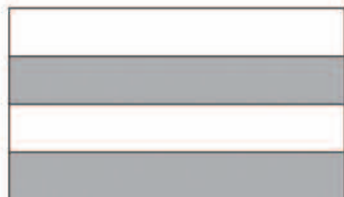


Diagram 5



5. Sew the 8 square strips into the center block as shown in Diagram 6.

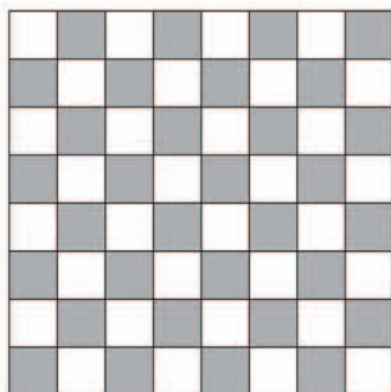


Diagram 6

Preparing the Appliqué

For raw edge appliqué, do not add seam allowances around the curved edges. For hand appliqué, add seam allowances.

1. Transfer fusible webbing to the wrong side of each of the 31906-1 Blue rectangles and squares. Allow to cool, following manufacturer's directions.
2. Trace template markings onto template material and then cut out the required number of appliqué patches:
 - 4 of Patch A
 - 8 of Patch B
 - 4 of Patch C
 - (whole patch, not 1/2 Patch)
 - 4 of 1/2 patch C and 4 of 1/2 patch C in reverse



WINDHAM FABRICS

"CONSTITUTION OAK"

Page 4

Sewing the Appliqué to Corner Triangles

1. Working with one 31907-6 Cream triangle at a time, center the patches as shown in Diagram 7, taking care to extend the edges of the patches to the straight raw edge as shown. Make four.

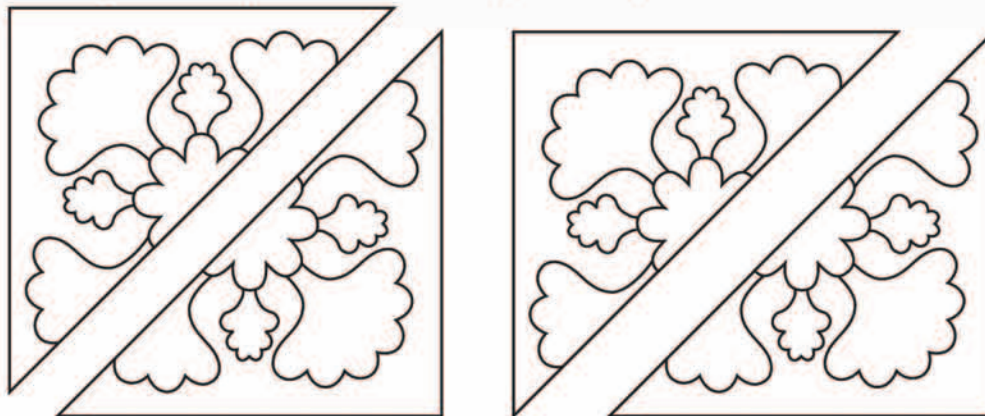


Diagram 7

2. Remove the paper backing and carefully fuse in place with hot iron.
3. Using thread to match, machine appliqué the patches using a simple zigzag or other stitch.
4. Sew a corner triangle to each of the four sides of the center 64-square block. See Diagram 8. Press seams well.
5. Quilt center now measures approximately 34-1/2" x 34-1/2".

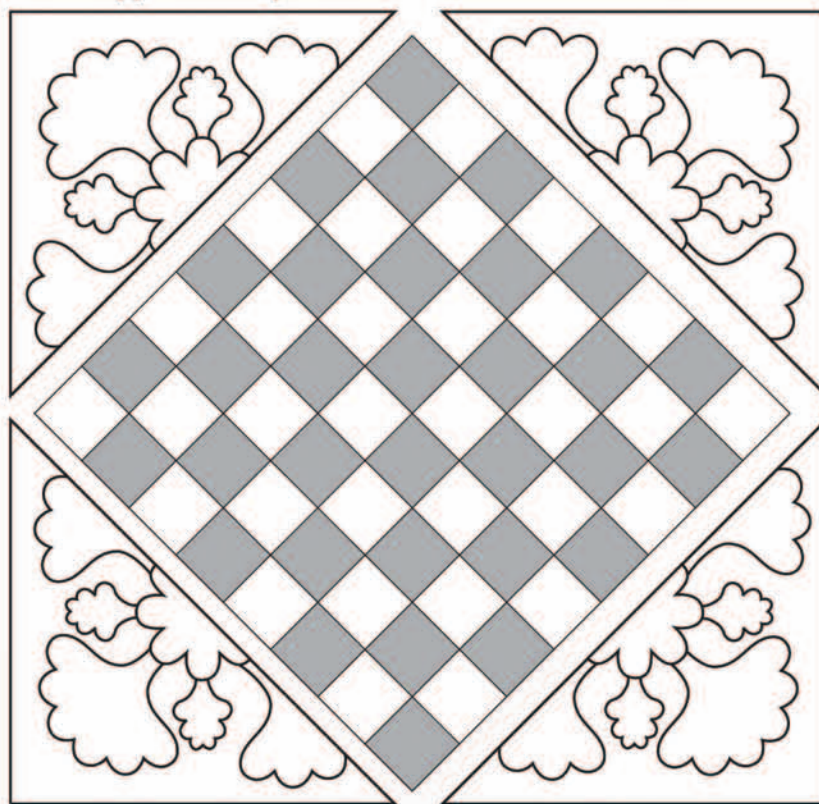


Diagram 8

"CONSTITUTION OAK"

Page 5

Adding the Borders & Finishing

1. Measure and trim the 31909-9 Blue 2-1/2" strips to the quilt center. Press.
2. Measure and trim the the 31901-2 Red 1-1/2" strips to the quilt center. Press. Quilt center now is 40-1/2" x 40-1/2".
3. Add the remaining 12" strips of 31908-3, mitering the corners as seen in the quilt photo. Press seams well.
4. Layer quilt top, batting and backing and quilt as desired. Seam together the binding strips (31901-1 Blue) into one long strip and bind quilt.

ENJOY!

To learn more about Debby Kratovil visit:

www.quilterbydesign.com

Be sure to visit www.windhamfabrics.com to see the complete collection
and to download this and other Free Projects

Cut 18" square into two triangles for background

