

COLONIAL SUNRISE

Designed by Karen Witt of Reproduction Quilts
Featuring the New Colonies Circa 1830-1890 by Nancy Gere
Size: 70" x 70"



Check www.windhamfabrics.com Free Project section to see if there are any pattern updates before you start your quilt

WINDHAM FABRICS

812 Jersey Ave ~ Jersey City, NJ 07310 ~ 201.659.0444 ~ FAX: 201.659.9719
www.windhamfabrics.com email: retail@windhamfabrics.com

COLONIAL SUNRISE

Designed by Karen Witt of Reproduction Quilts
Featuring the New Colonies Circa 1830-1890 by Nancy Gere

Size: 70" x 70"

(12) Block 1 (4) Block 2 (8) Block 3 (20) Block 4 (4) Block 5 (1) Center Block
8" Blocks



35267-1



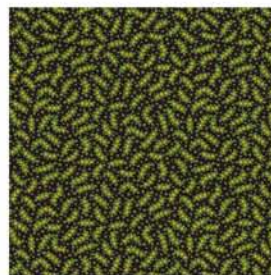
35269-1



35282-5



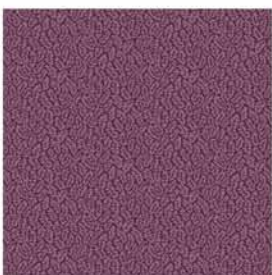
35283-4



35286-6



35289-7



35291-7



35292-7

Fabric Requirements:

35291-7 Purple -- 3/4 Yard Block 4
35289-7 Purple/Red -- 5/8 Yard Block 1, Block 2, Block 3
35292-7 Purple/Beige -- 7/8 Yard Block 4, Block 5
35283-4 Yellow -- 1 Yard Block 1, Block 2, Block 3, Block 5
35282-5 Cheddar -- 2 Yard Block 4, Second Border
35286-6 Green -- 2 1/4 Yard Block 2, Block 3, Center Block, Third Border, Binding
35267-1 Red Floral -- 5/8 Yard Block 1, Center Block
35269-1 Red -- 1 3/4 Yard Block 1, Block 2, Block 3, Block 5, Center Block, First Border

Cutting Directions

35291-7 Purple -- Block 4
Cut (80) 2 1/2" squares for **G**.

35289-7 Purple/Red -- Block 1, Block 2, Block 3
Cut (72) 2 1/2" squares for **A**.

35292-7 Purple/Beige -- Block 4, Block 5
Cut (80) 2 1/2" squares for **H**.
Cut (16) 3" squares. Cut each square once diagonally to make (32) triangles for **M**.

COLONIAL SUNRISE

Page 2

35283-4 Yellow -- Block 1, Block 2, Block 3, Block 5

Cut (24) 5 ¼" squares. Cut each square twice diagonally to make (96) triangles for **B**.

Cut (8) 3 3/8" squares for **L**.

35282-5 Cheddar -- Block 4, Second Border

Cut (80) 4 ½" X 2 ½" rectangles for **I**.

Cut (2) 2 ½" X 64 ½" strips for top and bottom of second border.

Cut (2) 2 ½" X 60 ½" strips for sides of second border.

35286-6 Green -- Block 2, Block 3, Center Block, Third Border, Binding

Cut (24) 2 ½" squares for **E**.

Cut (12) 4 ½" squares for **F**.

Cut (4) 3" squares. Cut each square once diagonally to make (8) triangles for **N**.

Cut (2) 3 ½" X 70 ½" strips for top and bottom of third border.

Cut (2) 3 ½" X 64 ½" strips for sides third border.

Cut (4) 2 1/4" strips, lengthwise of fabric. Piece, as necessary, to make 300" of binding.

35267-1 Red Floral -- Block 1, Center Block

Cut (12) 4 ½" squares for **D**.

Cut (1) 6 ¼" square for **O**.

35269-1 Red -- Block 1, Block 2, Block 3, Block 5, Center Block, First Border

Cut (8) 3 3/8" squares for **K**.

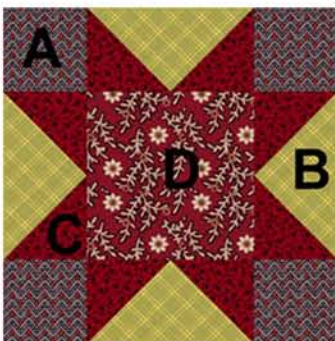
Cut (20) 2 ½" squares for **J**.

Cut (96) 3" squares. Cut each square once diagonally to make (192) triangles for **C**.

Cut (2) 2 ½" X 60 ½" strips for top and bottom of first border.

Cut (2) 2 ½" X 56 ½" strips for sides of first border.

Directions



Block 1

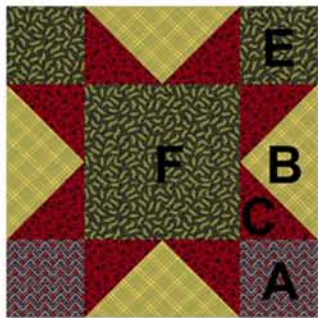
Use (4) A's, (4) B's, (8) C's and (1) D to make Block 1.

Press and trim to 8 ½" X 8 ½".

Repeat to make (12) blocks.

COLONIAL SUNRISE

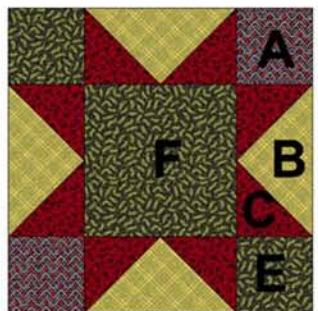
Page 3



Block 2

Use (2) A's, (4) B's, (8) C's, (2) E's and (1) F to make Block 2.

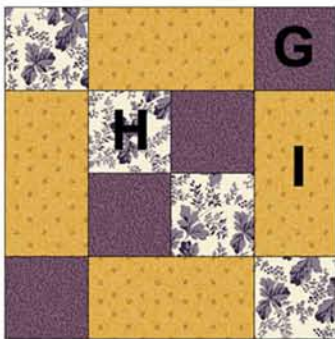
Press and trim to 8 ½" X 8 ½".
Repeat to make (4) blocks,



Block 3

Use (2) A's, (4) B's, (8) C's, (2) E's and (1) F to make Block 3.

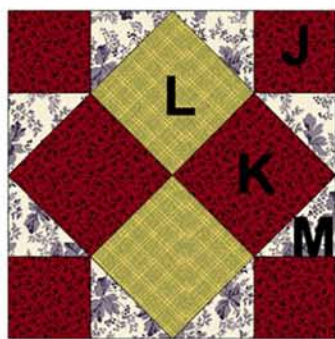
Press and trim to 8 ½" X 8 ½".
Repeat to make (8) blocks,



Block 4

Use (4) G's, (4) H's and (4) I's to make Block 4.

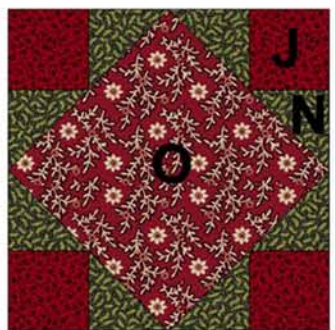
Press and trim to 8 ½" X 8 ½".
Repeat to make (20) blocks.



Block 5

Use (4) J's, (2) K's, (2) L's and (8) M's to make Block 5.

Press and trim to 8 ½" X 8 ½".
Repeat to make (4) blocks.



Center Block

Use (4) J's, (8) N's and (1) O to make Center Block.
Press and trim to 8 ½" X 8 ½".

COLONIAL SUNRISE

Page 4

Assembly

1. Arrange Blocks as shown in this layout.
Sew blocks together in rows and then sew rows together.
Press and trim. Quilt center should measure 56 1/2" X 56 1/2".



2. Sew red border strips to quilt center. Quilt center should now measure 60 1/2" X 60 1/2".
3. Sew cheddar border strips to quilt center. Quilt center should now measure 64 1/2" X 64 1/2".
4. Sew green border strips to quilt center. Quilt center should now measure 70 1/2" X 70 1/2".

For questions about this quilt contact Karen Witt at:
karenhwitt@gmail.com or via Karen's sight at: www.reproductionquilts.com

Be sure to visit www.windhamfabrics.com to see the complete collection
and to download this and other Free Projects