

# “Checkerboard Cats”

Designed by Mary Koval and Theresa Leppert  
Featuring the Cat in the Manor Collection by Mary Koval  
Size: 48” x 48”



WINDHAM FABRICS

812 Jersey Ave ~ Jersey City, NJ 07310 ~ 201.659.0444 ~ FAX: 201.659.9719  
www.windhamfabrics.com email: retail@windhamfabrics.com

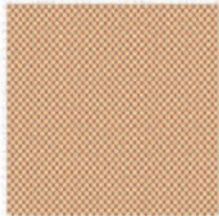


# “Checkerboard Cats”

Designed by Mary Koval and Theresa Leppert  
Featuring the Cat in the Manor Collection by Mary Koval  
Size: 48” x 48”

## Yardage Requirements

- 31934-1 black checkerboard cats = 1 yard
- Nine patch blocks = 1/8 yard of 8 fabrics  
31939-4, 31935-2, 31936-2, 31937-4,  
31940-1, 31941-4, 31942-3, 31944-4
- 31940-1 black first border = 1/3 yard
- 31933-2 cream paisley border = 2 yards
- 31944-1 black dot fabric for binding = 3/4 yard



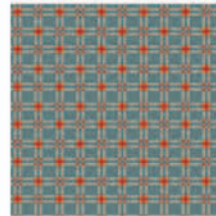
31942-3



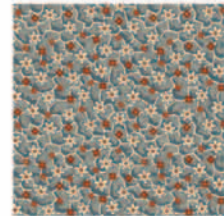
31941-4



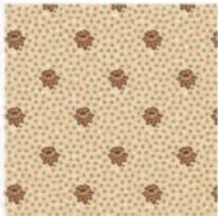
31940-1



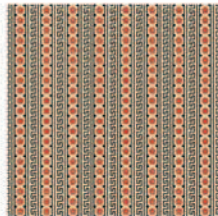
31939-4



31937-4



31936-2



31935-2



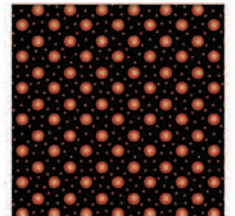
31934-1



31933-2



31944-4



31944-1

## Cutting Directions

- Checkerboard cat patt 31934-1 are cut 8” - make 10
- Squares for nine patch are cut 3” and there are 90 of them assorted or to follow quilt picture cut:  
10 squares of each of the following pattern:  
31939-4, 31935-2, 31936-2, 31937-4, 31941-4, 31942-3, 31944-4  
20 squares of: 31940-1
- First border Patt 31940-1 black is cut 2”
- Outside paisley border Patt 31933-2 cream is cut 8”
- Binding Patt 31944-1 black cut 2 1/2” strips

WINDHAM FABRICS



# “Checkerboard Cats”

Page 2

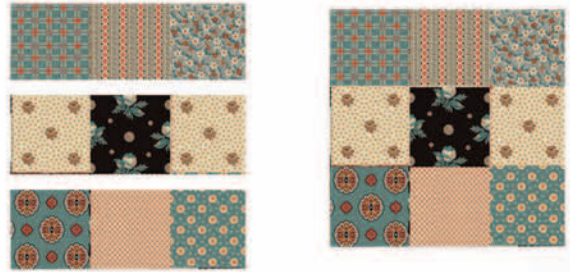
## Assembly:

1. Randomly place the squares to make the 9 patch blocks or you can follow the quilt picture as follows:



With Patt 31940-1 always in center add square of 31936-2 to each side as shown.

2. Add blocks to top and bottom following block layout as shown. Make 10 blocks.



3. Alternate the solid block of checkerboard cats with the pieced 9 block patch blocks. 4 blocks across and 5 rows down following quilt picture.



## Inner border

4. Sew one 2” piece to the top and bottom of the quilt. Then sew one 2” piece to each side of the quilt.

## Outer border

5. Sew one 8” piece to the top and bottom of the quilt. Then sew one 8” piece to each side of the quilt.
6. Layer the backing batting and quilt top. Baste and quilt as desired. Sew 2 1/2” pieces of binding to desired length and bind the edges of the quilt.

ENJOY!

Be sure to visit [www.windhamfabrics.com](http://www.windhamfabrics.com) to see the complete collection and to download this and other Free Projects

WINDHAM FABRICS

