



Butterfly Swirl



Designed by Joanie Holton & Melanie Greseth
Featuring The Butterfly Swirl Collection by Jackie Shapiro



WINDHAM FABRICS

812 Jersey Ave ~ Jersey City, NJ 07310 ~ 201.659.0444 ~ FAX: 201.659.9719
www.windhamfabrics.com email: retail@windhamfabrics.com

Butterfly Swirl

Designed by Melanie Greseth & Joanie Holton
Featuring The Butterfly Swirl Collection by Jackie Shapiro

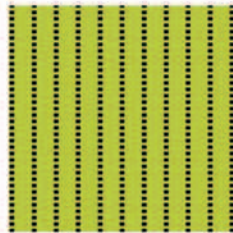
Finished quilt – 63” x 79”

WOF = width of fabric

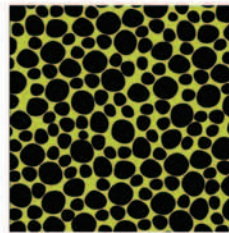
FABRIC		YARDAGE	CUTTING INSTRUCTIONS
Black w/pink flowers	32152-x multi	1-1/4 yd	(12) 10-1/2 square
Black w/white stripe	32155-2	1 yd	(4) 2-1/2" x WOF, (9) 2-1/4" x WOF (binding)
Lime w/black stripe	32155-4	1/8 yd	(1) 2-1/2" x WOF
Pink/black tiger	32157-3	1-1/2 yd	(31) 4-1/2" x 12-1/2"
Black w/white butterfly	32160-2	1-1/8 yd	(8) 4-1/2" x WOF
Black/white tiger	32157-1	1/2 yd	(5) 2-1/2" x WOF
Black/white cheetah	32153-1	1/4 yd	(2) 2-1/2" x WOF
Black w/multi stripe	32155-x multi	1/4 yd	(1) 2-1/2" x WOF
Lime/black cheetah	32153-4	5/8 yd	(8) 2" x WOF
backing	horizontal seam	3-1/2yd	



32152-X



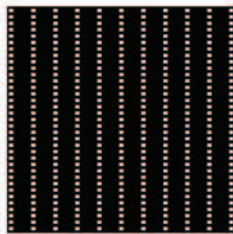
32155-4



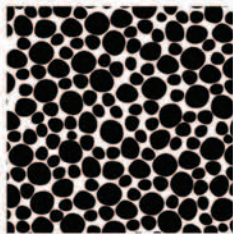
32153-4



32160-2



32155-2



32153-1



32157-3



32157-1



32155-X



WINDHAM FABRICS

Butterfly Swirl

Page 2

BLOCK ASSEMBLY

Sew (1) *black/white tiger* strip to (1) *black w/white stripe* strip, press. Repeat to make (4) strip sets.

Sew (1) *black/white tiger* strip to (1) *lime w/black stripe* strip, press.

Sub-cut these strips into 2-1/2" double square sets.

You will need (68) *tiger/stripe* sets and (12) of the *tiger/lime stripe* sets.

Sub-cut (1) *black/white cheetah* strip into (12) 2-1/2" squares.

Sew (2) *tiger/stripe* sets together end to end, having the tiger print on the left and stripe on the right.

To the right side, sew (1) *tiger/lime stripe* set, having the tiger sewn to the black & white stripe.

Repeat to make (12) set A's.



Sew (2) *tiger/stripe* sets together end to end, having the tiger print on the left and stripe on the right.

To the left side, sew (1) *black/white cheetah* 2-1/2" square, having the cheetah sewn to the black & white stripe. Repeat to make (12) set B's.

Sew (1) set B to right side of (1) *black w/pink flowers* 10-1/2" square.

Press seam toward large square.

Sew (1) set A to the bottom of the *black w/pink flowers/Set B*.

Press seam toward strip.



Sew (1) *black w/multi color stripe* strip to (1) *black/white cheetah* strip.

Sub-cut these strips into 2-1/2" double square sets. You will need (20) set C's.

Sew (1) set B to (1) set C, having the stripes opposite each other. Press.

Repeat to make 20 four-patch blocks.



Set C



Set B

Layout (4) of the four-patch blocks and (3) *pink/black tiger* 4-1/2" x 12-1/2" strips, starting with a four-patch and alternating with the *pink/black tiger* strips end to end, every other one. (refer to quilt picture for placement) Sew the row together and press seam toward pink tiger strip. Repeat to make (5) rows.



WINDHAM FABRICS

Butterfly Swirl

Page 3

Layout the remaining *pink/black tiger* strips and *floral/Set B/Set A* blocks in rows, alternating the *pink/black tiger* strips and *floral/Set B/Set A* blocks, as shown in quilt picture. Sew the strips and blocks together at the sides of the floral blocks. Press seams toward *pink/black tiger* strips.



Layout the *four-patch/pink tiger* rows and *pink tiger/floral* block rows, alternating as shown in quilt picture. Sew the four-patch rows to the floral block rows. Press seams.

BORDERS:

Inner Border: Sew (2) *lime cheetah* 2" x WOF strips together end to end. Sew to the right side of the quilt top. Repeat and sew to the left side of the quilt top. Trim borders even with quilt top and bottom. Sew (2) *lime cheetah* 2" x WOF strips together end to end, sew to the top of quilt top, press. Repeat and sew to the bottom of the quilt top. Trim even with quilt sides. Press seam toward border.

Outer Border: Sew (2) *black w/white butterfly* strips together, press and sew to the right side of the quilt. Repeat and sew to the left side of the quilt. Trim borders even with quilt top and bottom. Sew (2) *black w/white butterfly* strips together, press and sew to the top of the quilt. Repeat and sew to the bottom of the quilt. Press seam toward border.

FINISHING:

Sandwich the quilt, batting and backing and quilt. Sew (8) *black w/white stripe* 2-1/4" x WOF strips together end to end with a bias seam. Press in half and sew folded piece on to the front of the quilt matching raw edges. Fold over the raw edge and hand stitch folded edge on back of quilt.

Be sure to visit www.windhamfabrics.com to see the complete collection and to download this and other Free Projects



WINDHAM FABRICS