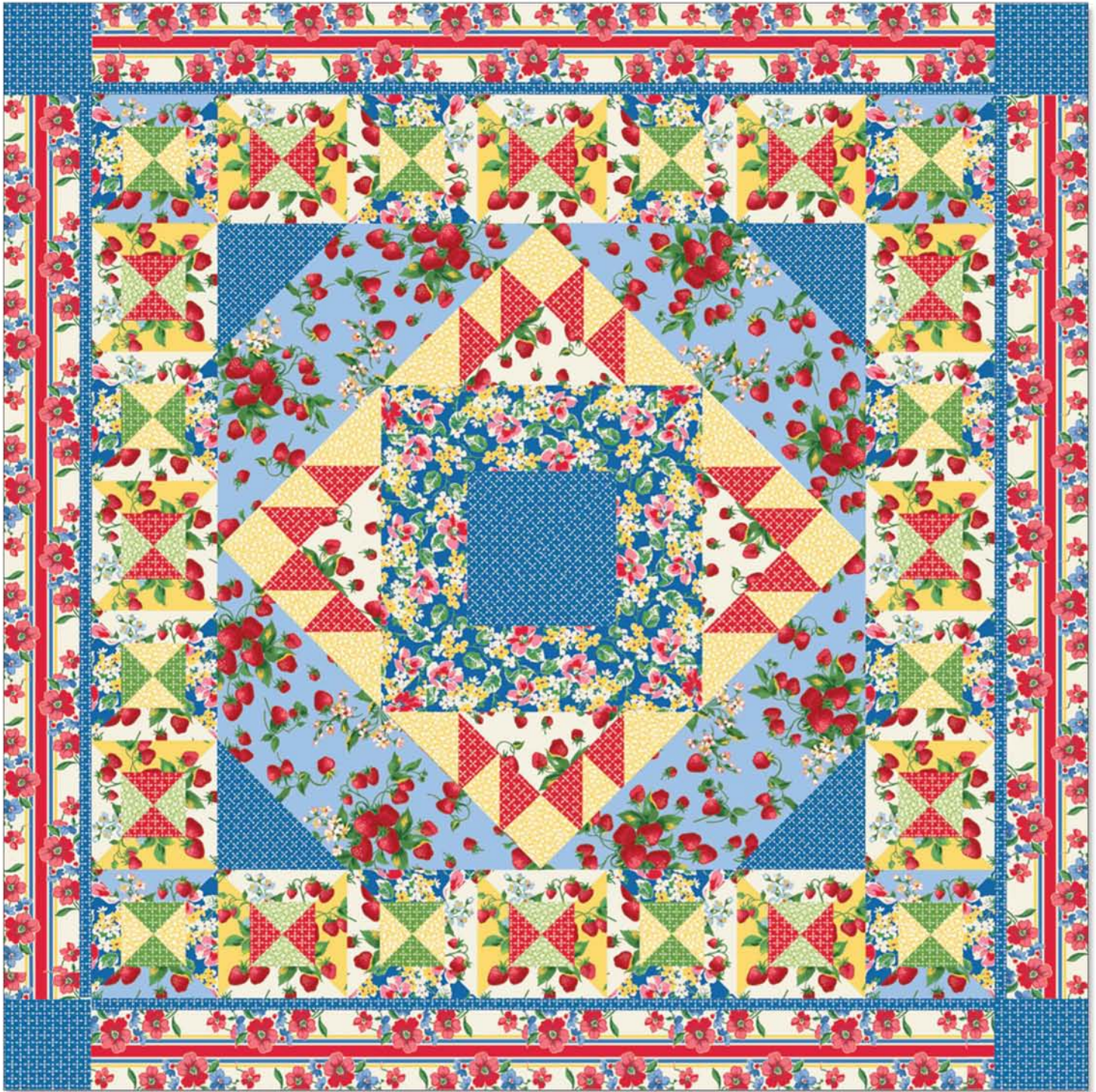


“Berry Picking”

Designed by Kathryn Wagar Wright
Featuring the Strawberry Picnic Collection by Whistler Studios
Size: 52” x 52”



WINDHAM FABRICS

812 Jersey Ave ~ Jersey City, NJ 07310 ~ 201.659.0444 ~ FAX: 201.659.9719
www.windhamfabrics.com email: retail@windhamfabrics.com

“Berry Picking”

Designed by Kathryn Wagar Wright
 Featuring the Strawberry Picnic Collection by Whistler Studios
 Quilt Size 52” x 52”
 Block sizes: 10 5/8”, 6”

*Bring the feeling of sunny summer days in a simpler time into your home with this striking quilt made from retro-style fabrics.
 Starch the fabric lightly before cutting for a little extra control.*

Fabric	Yards	Cutting
31966-1 blue	1/2	4 F, 8 H
31966-2 yellow	1/4	24 H
31966-3 red/white	1/2	1 A, 40 H
31969-2 yellow	1/4	4 C, 4 D, 4 E, 3 I
31969-4 green	1/8	3 I
31970-1 blue	1/2	4 B, 24 H
31971-3 red/white	1 1/4	4 borders 5” x 42 1/2”**
31972-1 blue	1/2	4 borders 1” x 42 1/2”, 1 A, 2 G, 4 J
31972-3 red	1/4	8 C, 6 I
31972-4 green*	1/2	5 strips binding 2 1/4” x WOF, 6 I
Backing	3 3/8	2 panels 29” x 56”

*includes binding

** cut from the length of the fabric, centering the border strips on the red stripe

Note: Borders are the exact length required including seam allowances. WOF denotes width of fabric, approximately 40”-42”



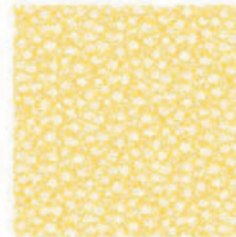
31966-1



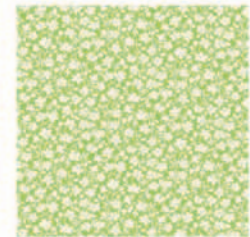
31966-2



31966-3



31969-2



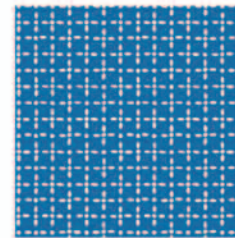
31969-4



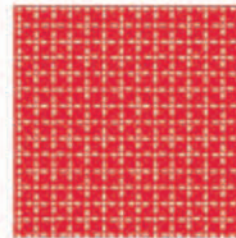
31970-1



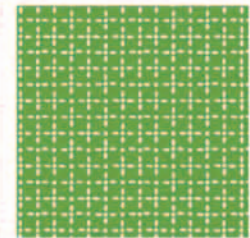
31971-3



31972-1



31972-3



31972-4



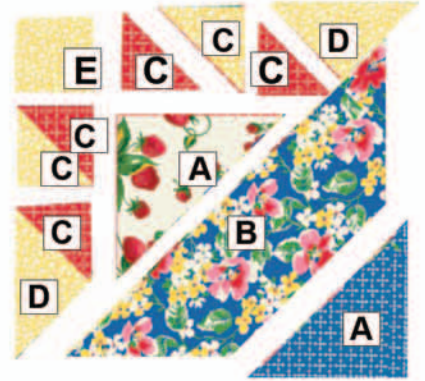
WINDHAM FABRICS

"Berry Picking"

Page 2

Patch Sizes:

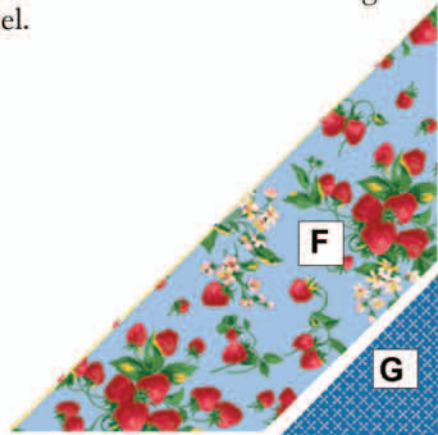
- A= 8 3/4" x 8 3/4" square, cut diagonally twice to yield 4 triangles
- B= 4 1/4" x 15 1/2" rectangle; cut as shown
- C= 3 1/2" x 3 1/2" square, cut diagonally to yield 2 triangles
- D= 4 5/8" x 4 5/8" square, cut diagonally to yield 2 triangles
- E= 3 1/8" x 3 1/8" square
- F= 6 7/8" x 21 3/4" rectangle, cut as shown
- G= 6 7/8" square, cut diagonally to yield 2 triangles
- H= 2" x 6 1/2" rectangle, cut as shown
- I= 4 1/4" x 4 1/4" square, cut diagonally twice to yield 4 triangles
- J= 5 1/2" x 5 1/2" square



Rectangle Cutting Diagram

Assembly:

1. Cut patches and border strips as listed. Cut rectangles as indicated for patches B, F, and H. Referring to the diagram, cut the ends of each rectangle at a 45-degree angle. Referring to the center block piecing diagram, join patches as shown. Make 4 center blocks. Referring to the quilt picture for the orientation of the blocks, join the blocks in two rows of two to make the center block panel.
2. Referring to the picture, sew a G to an F to make a corner triangle. Make 4 like this. Sew a corner triangle to each side of the center block panel.



3. Make the border blocks. Referring to the block X diagram, sew (2) 31969-2 yellow I's to (2) 31970-1 blue H's. Repeat with (2) 31972-4 green I's and (2) 31966-1 blue H's. Join the resulting triangles as shown. Make 4 block X.

Similarly, sew (2) 31972-3 red I's to (2) 31966-2 yellow H's. Repeat with (2) 31969-4 green I's and (2) 31966-3 red/white H's. Join the resulting triangles to make block Y. Make 12.

Sew (2) 31969-2 yellow I's to (2) 31966-3 red/white H's. Repeat with (2) 31972-4 green I's and (2) 31970-1 blue H's. Join the resulting triangles to make block Z. Make 8.



WINDHAM FABRICS

"Berry Picking"

Page 3

3. Make the border blocks. Referring to the block X diagram, sew (2) 31969-2 yellow I's to (2) 31970-1 blue H's. Repeat with (2) 31972-4 green I's and (2) 31966-1 blue H's. Join the resulting triangles as shown. Make 4 block X.

Similarly, sew (2) 31972-3 red I's to (2) 31966-2 yellow H's. Repeat with (2) 31969-4 green I's and (2) 31966-3 red/white H's. Join the resulting triangles to make block Y. Make 12.

Sew (2) 31969-2 yellow I's to (2) 31966-3 red/white H's. Repeat with (2) 31972-4 green I's and (2) 31970-1 blue H's. Join the resulting triangles to make block Z. Make 8.



Border Block X
Make 4



Border Block Y
Make 12



Border Block Z
Make 8

4. Referring to the quilt picture, arrange 3 block Y alternately with 2 block Z to make a border. Pay careful attention to the orientation of the blocks. Join the blocks. Make 4 borders like this. Matching centers and ends, sew border strips to both sides of the quilt. Sew a block X to each end of the remaining border strips, again paying careful attention to the orientation of the blocks. Matching centers, ends, and seams, sew these borders to the top and bottom of the quilt.
5. Sew a narrow blue border strip to one side of a wide red/white border strip. Repeat to make 4 borders. Matching centers and ends and referring to the quilt picture for fabric placement, sew borders to the sides of the quilt. Sew J's to the ends of the remaining border strips. Matching centers, ends, and seams, sew these borders to the top and bottom of the quilt.

Finishing:

1. Join the backing panels along the long sides. Layer the backing, batting, and quilt top. Baste.
2. Quilt in the ditch around the block patches. Quilt around the printed motifs in the larger patches and borders or as desired.
3. Join the binding strips end to end with diagonal seams. Bind the quilt to finish.

ENJOY!

Be sure to visit www.windhamfabrics.com to see the complete collection and to download this and other Free Projects



WINDHAM FABRICS