



Bella

Designed by Jean Katherine Smith
Featuring the Bella Collection by Lotta Jansdotter
Size: 40" x 50"

Pattern
TESTED



*Always look on our website before starting your project to see
if there are any updates or corrections*

WINDHAM FABRICS

**Lotta
Jansdotter**

812 Jersey Ave ~ Jersey City, NJ 07310 ~ 201.659.0444 ~ FAX: 201.659.9719
www.windhamfabrics.com email: retail@windhamfabrics.com

Bella

Designed by Lotta Jansdotter
Featuring the Bella Collection by Lotta Jansdotter
Size: 34" x 48 1/2"

Fabric Requirements:

Fabric A - 33405A-2 Poppy Grid - 1/4 yd
Fabric B - 5212-5 Grey Plank Flower - 1/4 yd
Fabric C - 35211-5 Grey Plank Dotted Stripe - 1/3 yd
Fabric D - 35211-3 Warm Grey Dotted Stripe - 1/4 yd
Fabric E - 35211-2 Poppy Dotted Stripe - 1/4 yd
Fabric F - 35213-3 Warm Grey Stripe - 1/2 yd
Fabric G - 35215-3 Warm Grey Dot - 1/4 yd
Fabric H - 35214-2 Poppy Flower Dot - 1/3 yd
Fabric J - Solid White - Linen or cotton - 1/3 yd
Fabric K - Solid Grey - linen or cotton - 1/3 yd

Binding - 1/2 yd
Backing - 1 3/4 yds

Cutting Instructions:

All patterns are cut Width of Fabric
unless specified

• (Fabric A) Poppy Grid - 33405A-2

SECTION 1

Cut (1) 11 3/4" x 4"

SECTION 2

Cut (1) 7 1/2" x 2"

Cut (1) 4" x 5"

SECTION 3

Cut (1) 3 1/2" x 4 3/4"

Cut (1) 3 1/2" x 5 1/4"

Cut (1) 4" x 5"

SECTION 4

Cut (1) 7 1/2" x 5"

Cut (1) 3 3/4" x 4 1/2"

SECTION 5

Cut (1) 4" x 5 1/2"

• (Fabric B) 35212-5 Grey Plank Flower

SECTION 1

Cut (1) 11 3/4" x 4"

SECTION 3

Cut (1) 7 1/2" x 4 3/4"

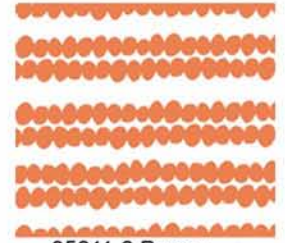
Cut (1) 11 1/4" x 4 1/2" (Sew vertically - see
assembly diagram)

SECTION 5

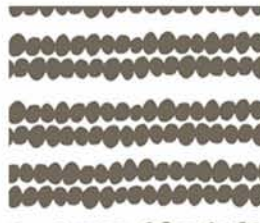
Cut (1) 4 1/4" x 5 1/4"



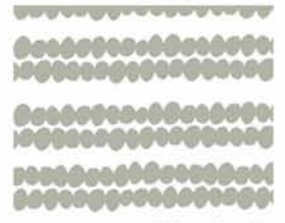
33405A-2 Poppy



35211-2 Poppy



35211-3 Warm Grey



35211-5 Grey Plank



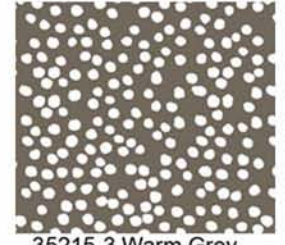
35212-5 Grey Plank



35213-3 Warm Grey



35214-2 Poppy



35215-3 Warm Grey



Solid Grey



Solid White

- **(Fabric C) 35211-5 Grey Plank Dotted Stripe**

SECTION 2

Cut (1) 7 $\frac{3}{4}$ " x 5" (Cut Vertically - see quilt assembly diagram)

SECTION 4

Cut (1) 4" x 5"

Cut (1) 4" x 11"

SECTION 5

Cut (2) 7 $\frac{3}{4}$ " x 2"

- **(Fabric D) 35211-3 Warm Grey Dotted Stripe**

SECTION 2

Cut (1) 7 $\frac{1}{2}$ " x 5"

SECTION 3

Cut (1) 7 $\frac{1}{2}$ " x 2 $\frac{1}{2}$ "

Cut (1) 4" x 5 $\frac{1}{4}$ "

SECTION 4

Cut (1) 7 $\frac{1}{2}$ " x 2"

SECTION 5

Cut (1) 4" x 5" (Cut Vertically - see quilt assembly diagram)

- **Fabric E) 35211-2 Poppy Dotted Stripe**

SECTION 2

Cut (1) 4" x 6 $\frac{3}{4}$ " (Cut Vertically - see quilt assembly diagram)

SECTION 3

Cut (1) 3 $\frac{1}{2}$ " x 7"

Cut (1) 4" x 5 $\frac{1}{4}$ " (Cut Vertically - see quilt assembly diagram)

SECTION 4

Cut (1) 7 $\frac{1}{2}$ " x 5"

SECTION 5

Cut (1) 4" x 11" (Cut Vertical in block - see quilt assembly diagram)

Cut (1) 6 $\frac{1}{2}$ " x 4 $\frac{3}{4}$ "

- **(Fabric F) 35213-3 Warm Grey Stripe**

SECTION 2

Cut (1) 4 $\frac{1}{4}$ " x 11 $\frac{1}{4}$ " (Cut Vertically - see quilt assembly diagram)

Cut (1) 4 $\frac{1}{4}$ " x 5" (Cut Vertically - see quilt assembly diagram)

SECTION 3

Cut (1) 3 $\frac{1}{2}$ " x 7" (Cut Vertically - see quilt assembly diagram)

Cut (1) 7 $\frac{1}{2}$ " x 2" (Cut Vertically - see quilt assembly diagram)

SECTION 4

Cut (1) 4 $\frac{1}{2}$ " x 11"

Cut (1) 2 $\frac{3}{4}$ " x 6 $\frac{1}{2}$ "

SECTION 5

Cut (1) 7 $\frac{3}{4}$ " x 4 $\frac{3}{4}$ " (Cut Vertically - see quilt assembly diagram)

Cut (1) 7 $\frac{3}{4}$ " x 5"

SECTION 6

Cut (1) 12 $\frac{1}{4}$ " x 3" (Cut Vertically - see quilt assembly diagram)

- (Fabric G) 35215-3 Warm Grey Dot

SECTION 2

Cut (1) $3 \frac{1}{2}$ " x 5"

Cut (1) $3 \frac{1}{4}$ " x $4 \frac{3}{4}$ "

Cut (1) $7 \frac{3}{4}$ " x 2"

SECTION 3

Cut (1) 4" x $5 \frac{1}{4}$ "

SECTION 4

Cut (1) $3 \frac{1}{2}$ " x $4 \frac{1}{4}$ "

Cut (1) $4 \frac{1}{2}$ " x 11" (Mount vertically - see assembly diagram)

SECTION 5

Cut (2) $3 \frac{1}{2}$ " x $6 \frac{3}{4}$ "

SECTION 6

Cut (1) $6 \frac{1}{2}$ " x 3"

- (Fabric H) 35214-2 Poppy Flower Dot

SECTION 2

Cut (1) 4" x $5 \frac{1}{4}$ "

Cut (1) $7 \frac{1}{2}$ " x $5 \frac{1}{4}$ "

Cut (1) $3 \frac{1}{2}$ " x $11 \frac{1}{4}$ "

SECTION 4

Cut (1) 4" x 5"

Cut (1) $3 \frac{3}{4}$ " x 7"

SECTION 5

Cut (1) $4 \frac{1}{2}$ " x 11"

- (Fabric J) Solid White - Linen or Cotton

SECTION 1

Cut (1) 12" x 4"

SECTION 2

Cut (1) $7 \frac{3}{4}$ " x $5 \frac{1}{4}$ "

SECTION 3

Cut (1) 4" x $11 \frac{1}{4}$ "

Cut (3) 4" x 5"

Cut (1) 7" x 5"

SECTION 4

Cut (1) $3 \frac{1}{2}$ " x $7 \frac{1}{4}$ "

Cut (1) $2 \frac{3}{4}$ " x 5"

Cut (1) 4" x 5"

SECTION 5

Cut (1) $3 \frac{1}{2}$ " x $4 \frac{3}{4}$ "

Cut (1) 4" x 5"

Cut (1) 3" x $5 \frac{1}{2}$ "

SECTION 6

Cut (1) $12 \frac{1}{4}$ " x 3"

- (Fabric K) Solid Grey – Linen or Cotton

SECTION 2

Cut (1) $7 \frac{3}{4}$ " x 2"

Cut (1) $4 \frac{1}{4}$ " x $5 \frac{1}{4}$ "

Cut (1) $3 \frac{1}{4}$ " x 7"

SECTION 3

Cut (1) $7 \frac{1}{2}$ " x 5"

Cut (1) $3 \frac{1}{2}$ " x $4 \frac{3}{4}$ "

Cut (1) 7" x 2"

SECTION 4

Cut (1) $7 \frac{1}{2}$ " x 2"

Cut (1) 4" x 5"

SECTION 5

Cut (1) $3 \frac{1}{2}$ " x $4 \frac{3}{4}$ "

Cut (1) $6 \frac{1}{2}$ " x $1 \frac{3}{4}$ "

Cut (1) 4" x $5 \frac{1}{4}$ "

SECTION 6

Cut (1) 5" x 3"

Quilt Assembly

All seams are $\frac{1}{4}$ "

1. Keep the sets of strips in separate piles to minimize mix-ups.
2. Refer to the Quilt Assembly Diagram on page 6 and sew the strips together by block in each of the 6 sections first. Make sure you follow direction of pattern during assembly.
3. Next sew the blocks together in each of the 6 sections.
4. Finally sew the 6 sections together following the assembly diagram.

Finishing the Quilt

1. Press all seams well.
2. Layer quilt top, batting and quilt back. Quilt and bind as desired. ENJOY!



Be sure to visit www.windhamfabrics.com to see the complete collection and to download this and other Free Projects

Bella

CUTTING LAYOUT

1	A - 11 ³ / ₄ " X 4"	B - 11 ³ / ₄ " X 4"	J - 12" X 4"
----------	---	---	--------------

2	C - 7 ³ / ₄ " X 5"	F - 4 ¹ / ₄ " X 11 ¹ / ₄ "	G - 3 ¹ / ₂ " X 5"	K - 7 ³ / ₄ " X 2"	A - 7 ¹ / ₂ " X 2"	G - 3 ¹ / ₄ " X 4 ³ / ₄ "
	H - 4" X 5 ¹ / ₄ "	K - 4 ¹ / ₄ " X 5 ¹ / ₄ "	E - 4" X 6 ³ / ₄ "	J - 7 ³ / ₄ " X 5 ¹ / ₄ "	D - 7 ¹ / ₂ " X 5"	H - 3 ¹ / ₂ " X 11 ¹ / ₄ "
	G - 7 ³ / ₄ " X 2"	A - 4" X 5"	F - 4 ¹ / ₄ " X 5"	H - 7 ¹ / ₂ " X 5 ¹ / ₄ "	K - 3 ¹ / ₄ " X 7"	

3	J - 4 X 11 ¹ / ₄ "	E - 3 ¹ / ₂ " X 7"	B - 7 ¹ / ₂ " X 4 ³ / ₄ "	A - 3 ¹ / ₂ " X 4 ³ / ₄ "	B - 4" X 10 ³ / ₄ "	K - 7 ¹ / ₂ " X 5"	J - 7" X 5"
	K - 3 ¹ / ₂ " X 4 ³ / ₄ "	A - 4" X 5"	J - 4" X 5"	F - 3 ¹ / ₂ " X 7"		G - 4" X 5 ¹ / ₄ "	E - 4" X 5 ¹ / ₄ "
	D - 7 ¹ / ₂ " X 2 ¹ / ₂ "					F - 7 ¹ / ₂ " X 2"	D - 4" X 5 ¹ / ₄ "

4	K - 7 ¹ / ₂ " X 2"	H - 4" X 5"	C - 4" X 5"	F - 4 ¹ / ₂ " X 11"	G - 3 ¹ / ₂ " X 4 ¹ / ₄ "	E - 7 ¹ / ₂ " X 5"	G - 4 ¹ / ₂ " X 11"	H - 3 ³ / ₄ " X 7"	C - 4" X 11"	J - 2 ³ / ₄ " X 5"
	A - 7 ¹ / ₂ " X 5"			J - 3 ¹ / ₂ " X 7 ¹ / ₄ "	J - 4" X 5"	K - 4" X 5"		A - 3 ³ / ₄ " X 4 ¹ / ₂ "		F - 2 ³ / ₄ " X 6 ¹ / ₂ "
				D - 7 ¹ / ₂ " X 2"						

5	K - 3 ¹ / ₂ " X 4 ³ / ₄ "	E - 4" X 11"	C - 7 ³ / ₄ " X 2"	D - 4" X 5"	J - 4" X 5"	H - 4 ¹ / ₂ " X 11"	J - 3 ¹ / ₂ " X 4 ³ / ₄ "	F - 7 ³ / ₄ " X 4 ³ / ₄ "	K - 6 ¹ / ₂ " X 1 ³ / ₄ "
	G - 3 ¹ / ₂ " X 6 ³ / ₄ "		F - 7 ³ / ₄ " X 5"				G - 3 ¹ / ₂ " X 6 ³ / ₄ "	B - 4 ¹ / ₄ " X 5 ¹ / ₄ "	K - 4" X 5 ¹ / ₄ "
								C - 7 ³ / ₄ " X 2"	A - 4" X 5 ¹ / ₂ "

6	J - 12 ¹ / ₄ " X 3"	G - 6 ¹ / ₂ " X 3"	F - 12 ¹ / ₄ " X 3"	K - 5" X 3"
----------	---	--	---	-------------

Bella

Page 6

QUILT ASSEMBLY DIAGRAM

