



# *"Autumn Leaves Placemats"*



Designed by Erin Witt Designs ©  
Featuring The Autumn Leaves Collection by Rosemarie Lavin  
Size: 18" x 13"



**WINDHAM FABRICS**

812 Jersey Ave ~ Jersey City, NJ 07310 ~ 201.659.0444 ~ FAX: 201.659.9719  
www.windhamfabrics.com email: retail@windhamfabrics.com



# "Autumn Leaves Placemats"

Designed by Erin Witt Designs ©  
Featuring The Autumn Leaves Collection by Rosemarie Lavin  
Size: 18" x 13"

## Fabric Requirements

32528-3 Red – ¼ Yard (blocks)  
32531-X Multi -- ¼ Yard (blocks)  
32534-4 Green -- ¼ Yard (background)  
32528-1 Tan – ½ Yard (background)  
32533-X Multi -- ¼ Yard (binding)  
32527-X Multi – ½ Yard (large basket and misc fussy cut pieces)

*Note: There is enough fabric to make 2 placemats*



32533-X



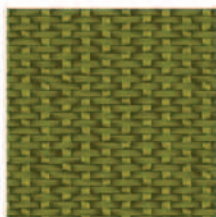
32528-3



32528-1



32531-X



32534-4



32527-X

## Cutting Directions - for each placemat

32528-3 Red – ¼ Yard (blocks)  
Cut (2) 2 ¾" X 2 ¾" squares.  
Cut (4) 3 1/4" X 3 1/4" triangles.

32531-X Multi -- ¼ Yard (blocks)  
Cut (4) 2 ¾" X 2 ¾" square.

32534-4 Green -- ¼ Yard (background/setting triangle)  
Cut (1) 7 5/8" square. Cut square in twice diagonally.

32528-1 Tan – ½ Yard (background)  
Cut (1) 12 X 13 ¾" square.

32533-X Multi -- ¼ Yard (strip and binding)  
Cut (1) ¾" X 13 ¼" dividing strip to separate pieced blocks from appliquéd area.  
Cut 2 ½" strips. Piece, as necessary, to make 66" of binding.



**WINDHAM FABRICS**

# "Autumn Leaves Placemats"

Page 2

## Cutting Directions - for each placemat (continued)

32527-X Multi – ½ Yard (large basket and misc fussy cut pieces)

Follow manufacturer's instructions and press lightweight fusible interfacing to the wrong side of fabric.

Fussy cut large basket and misc Autumn Harvest pieces to create desired arrangement for center, top right and bottom right corners of the placemat.

## Instructions

### 1. Partial Pieced Blocks

Referring to diagram below, make (2) partial pieced blocks, using (2) red triangles and (1) multi leaves square for each unit.



### 2. Four Patch Block

Referring to diagram at right, make (1) Four Patch block using (2) red squares and (2) multi leaves squares.



### 3. Appliqué Area

Arrange motifs in place and use machine appliqué to secure edges. Trim square to 11 ½" X 13 ¼".

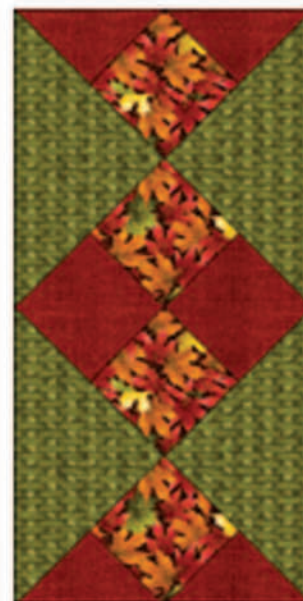
### 4. Assembly

Referring to picture at right, sew pieced blocks and green setting triangles together.

The pieced area of the placement should measure 7 1/8" X 13 1/4"

Sew pieced area, dividing strip and appliquéd area to form placement.

### 5. Quilt and bind, as desired.



ENJOY!!



Be sure to visit [www.windhamfabrics.com](http://www.windhamfabrics.com) to see the complete collection and to download this and other Free Projects

**WINDHAM FABRICS**