

# Apron & Hostess Gift

Designed by Tammy Vasser of Marmalade Fabrics  
Featuring the In the Mix Collection by Whistler Studios



The Hostess  
with the Mostess!

What could be a better  
show of appreciation  
than making these  
hostess gifts

Hostess Apron

Hostess Recipe Bag



Check [www.windhamfabrics.com](http://www.windhamfabrics.com) Free Project section to see if there are  
any pattern updates before you start your quilt project

**WINDHAM FABRICS**

812 Jersey Ave ~ Jersey City, NJ 07310 ~ 201.659.0444 ~ FAX: 201.659.9719  
[www.windhamfabrics.com](http://www.windhamfabrics.com) email: [retail@windhamfabrics.com](mailto:retail@windhamfabrics.com)

# Apron & Hostess Gift

Designed by Tammy Vasser of Marmalade Fabrics  
Featuring the In the Mix Collection by Whistler Studios

## Hostess Bag

### Fabric Requirements:

2 panels 37467-X Multi Recipe fabric  
1/2 yard 37474-2 Blue (solid)

Finish Size: 11"x15"

### Cutting & Assembly:

Trim 2 recipe panels around outside of the check  
by 1/4" (approx. size: 10"x11 1/4")

From the solid fabric, cut the following blocks starting with Block A.

- A - 22 1/2"x16 1/2"
- B - 2 cuts at 3"x10"
- C - 2 cuts at 1"x10"
- D - 2 cuts at 2"x15"

Save remaining fabric to create a tie

Attach Block B to top of trimmed recipe 1 and trimmed recipe 2.  
Attache Block C to bottom of trimmed recipe 1 and trimmed recipe 2.  
Attach Blocks D to each side of trimmed recipe 1 only.

Connect new recipe block to second recipe block. (One recipe block will have solid sides and one recipe block will not have solid sides.)

Fold new long block over right sides together to form a tube.

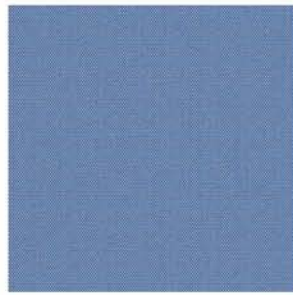
Line up the recipes inside the tube so that they are facing each other and then stitch the bottom of the tub closed. You will now have a recipe on the front and back of the bag.

For the lining, join the sides of Block A to form a tube. Stitch bottom together to form lining. Lining will be 1 1/2" taller than outside of bag.

Insert lining into outer bag. At the top of the outer bag, stitch around the bag to secure the outside to the lining. This stitch will be covered in the next step.

Roll top of lining over the top of the outside bag to create a pocket for a drawstring. Top stitch around the top of the bag.

Use remaining fabric to create a long tie. Insert the tie into the pocket at the seem of the lining to finish.



37474-2



37467-X



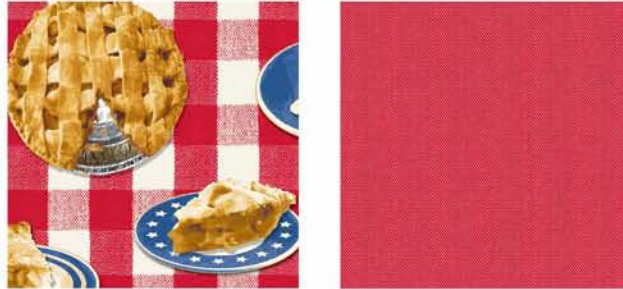
# Apron & Hostess Gift

Page 2

## Hostess Apron

### Fabric Requirements:

1 yard 37474-1 Red (solid)  
1 yard 37468-1 Red (print)



### Cutting & Assembly:

Cut solid fabric to form Block A - 35" x 17"  
Cut print fabric to form Block B - 35" x 11"

Cut remaining solid fabric into 3 strips - 2" x WOF (width of fabric)

Start by double-folding both sides of Block A for a finished hem on each side.

Repeat double-hem on top of Block A.

Repeat double-hem on top only of Block B.

Place blocks together so that the back of Block B is on top of Block A. Make sure Block B overlaps the bottom of Block A by 1/2". These blocks will form the pocket of the apron.

Hem the bottom of Block A & B together by folding Block B over Block A enclosing the raw edge of Block A.

Repeat on both sides of the apron..

Top stitch the large pocket to form smaller pockets as desired.

Connect the 3 remaining strips of solid fabric. Double fold and top stitch the fabric to create 1 long tie. Then cut into 2 ties and attach each to each side of the apron to finish.

**For questions about these projects, please contact Tammy Vasser through her shop at [www.marmaladefabrics.com](http://www.marmaladefabrics.com), through her blog at [www.tammyvasser.typepad.com](http://www.tammyvasser.typepad.com) or directly at [tammy@marmaladefabrics.com](mailto:tammy@marmaladefabrics.com)**

**Be sure to visit [www.windhamfabrics.com](http://www.windhamfabrics.com) to see the complete collection and to download other Free Projects**