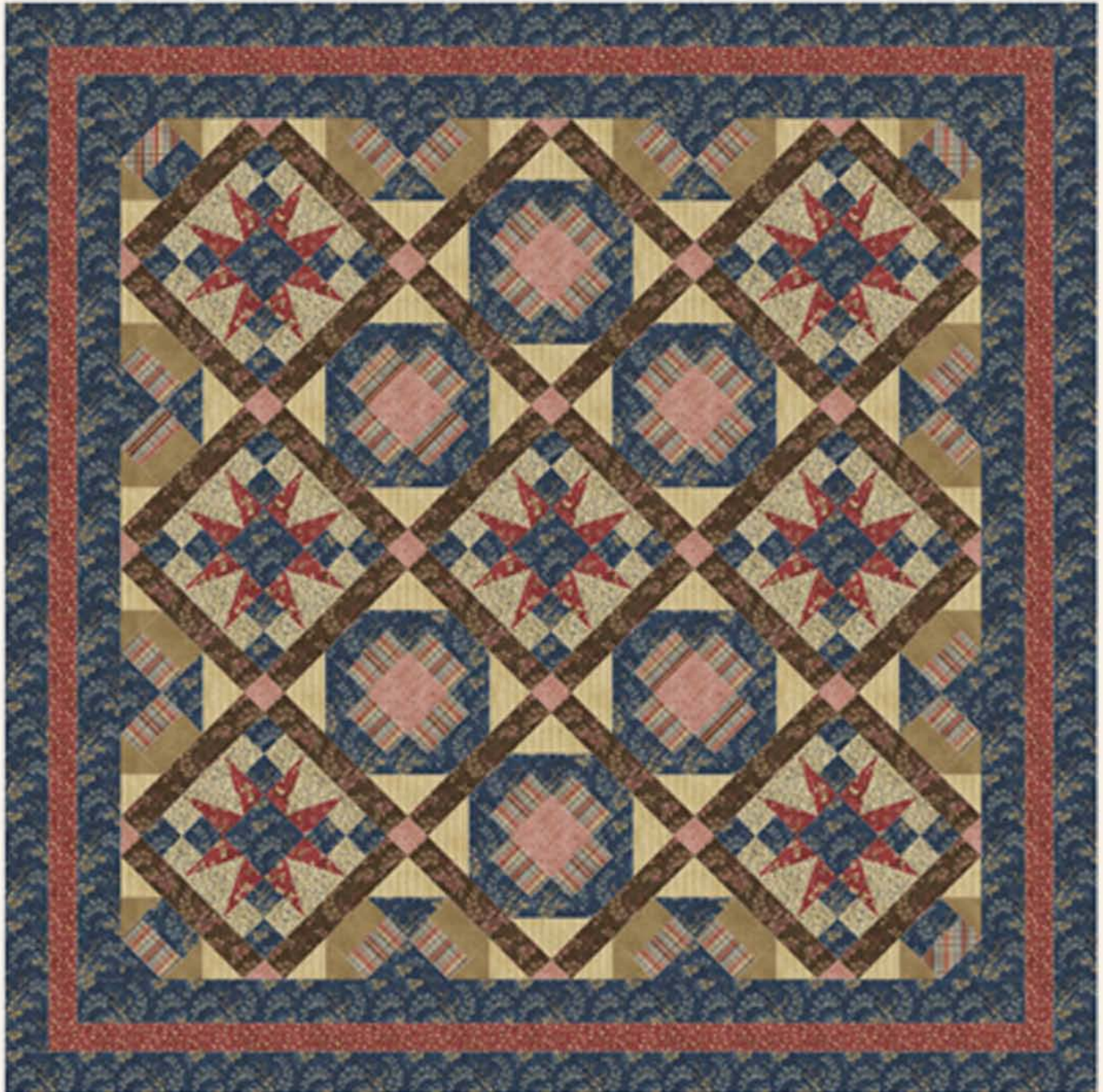


# Alice's Stars

REVISED

Designed by Karen Witt ©Reproduction Quilts  
Featuring the Alice Putman Collection by Nancy Gere™  
Size: 75 1/2" x 75 1/2"



Always look on our website before starting your project to see  
if there are any updates or corrections

WINDHAM FABRICS

812 Jersey Ave ~ Jersey City, NJ 07310 ~ 201.659.0444 ~ FAX: 201.659.9719  
www.windhamfabrics.com email: retail@windhamfabrics.com

# Alice's Stars

Designed by Karen Witt ©Reproduction Quilts  
Featuring the Alice Putman Collection by Nancy Gere™

Size: 75 1/2" x 75 1/2"

(7) 12" Star Blocks

(6) 12" Churn Dash Blocks



33484-1



33484-3



33485-4



33486-2



33486-4



33487-3



33487-4



33488-4



33489-1

SKU	Description	Yardage	Use in Quilt
33484-3	Blue print	3 3/4 yards	Piecing Block 1 and 2, piecing setting and corner triangles, borders 1 and 3, binding
33488-4	Red/ brown print	5/8 yard	Piecing Block 1
33487-3	Beige/blue print	7/8 yard	Piecing Block 1
33485-4	Red/blue plaid	7/8 yard	Piecing Block 2, piecing setting and corner triangles
33486-2	Beige print	1 yard	Piecing Block 2, piecing setting and corner triangles
33486-4	Pink with dots	3/4 yard	Piecing Block 2, keystones
33489-1	Camel print	3/4 yard	Piecing setting and corner triangles
33487-4	Red print	3/4 yard	Border 2
33484-1	Brown print	1 yard	Sashing



# Alice's Stars

Page 2

## Cutting Directions

33484-3 Blue print

Cut borders first from the length of your fabric:

Cut (2) 3 1/2" X 59 7/8" strips for sides of Border 1

Cut (2) 3 1/2" X 65 7/8" strips for top and bottom of Border 1

Cut (2) 3 1/2" X 69 7/8" strips for sides of Border 3

Cut (2) 3 1/2" X 75 7/8" strips for top and bottom of Border 3

Cut 2 1/4" strips and piece, as necessary, to make 320" of binding.

Cut (56) 2 1/2" squares for Star Blocks (Block 1).

Cut (7) 4 1/2" squares for center of Star Blocks (Block 1).

Cut (24) 2 1/2" X 4 1/2" rectangles for Churn Dash Blocks (Block 2).

Cut (12) 4 7/8" squares and cut each once diagonally to make (24) triangles for Churn Dash Blocks (Block 2).

Cut (8) 4 7/8" squares and cut each once diagonally to make (16) triangles for setting triangles.

Cut (4) 2 1/2" X 4 1/2" rectangles for corner triangles.

Cut (1) 5 1/4" square and cut twice diagonally to make (4) triangles for corner triangles.

33488-4 Red/ brown print

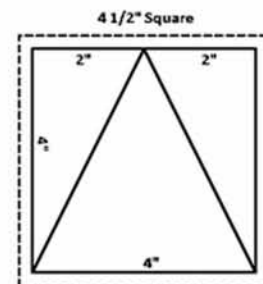
Recommended: Tri Recs TM Ruler by EZ Quilting.

Cut three 4 1/2" strips. Place two full strips right sides together and fold the third strip in half right sides together. Cut 28 pairs of mirror image Recs units – total of 56 units.

If ruler not available, use paper piecing templates.

Draw (28) paper foundations with the following dimensions.

Cut (56) red/brown rectangles for paper piecing.



33487-3 Beige/blue print

Cut (56) 2 1/2" squares for Star Blocks (Block 1).

Recommended: Tri Recs TM Ruler by EZ Quilting.

Cut Two 4 1/2" strips. Cut 28 Tri Units.

If ruler not available, use paper foundations drawn above.

Cut (28) beige/blue print squares for paper piecing.

33485-4 Red/blue plaid

Cut (24) 2 1/2" X 4 1/2" rectangles for Churn Dash Blocks (Block 2).

Cut (16) 2 1/2" X 4 1/2" rectangles for setting triangles.

Cut (4) 2 1/2" X 4 1/2" rectangles for corner triangles.



# Alice's Stars

Page 3

## 33486-2 Beige print

Cut (12) 4 7/8" squares and cut each once diagonally to make (24) triangles for Churn Dash Blocks (Block 2).

Cut (4) 4 7/8" squares and cut each once diagonally to make (8) triangles for setting triangles.

Cut (4) 5 1/4" squares and cut each twice diagonally to make (16) triangles for setting triangles.

Cut (2) 5 1/4" squares and cut each twice diagonally to make (8) triangles for corner triangles.

## 33486-4 Pink with dots

Cut (6) 4 1/2" squares for centers of Churn Dash Blocks (Block 2).

Cut (24) 2 1/2" squares for keystones.

## 33489-1 Camel print

Cut (16) 2 1/2" X 4 1/2" rectangles for setting triangles.

Cut (4) 5 1/4" squares and cut each twice diagonally to make (16) triangles for setting triangles.

Cut (2) 5 1/4" squares and cut each twice diagonally to make (8) triangles for corner triangles.

## 33487-4 Red print

Cut (2) 2 1/2" X 65 7/8" strips for sides of Border 2

Cut (2) 2 1/2" X 69 7/8" strips for sides of Border 2

## 33484-1 Brown print

Cut (36) 2 1/2" X 12 1/2" strips for sashing between blocks.

## Instructions

### Star Blocks (Block 1)

1.



Make (28) units, as shown. Press and trim each unit to 4 1/2" X 4 1/2".

2.



Make (28) units, as shown. Press and trim each unit to 4 1/2" X 4 1/2".

WINDHAM *FABRICS*



# Alice's Stars

Page 4

3.



For each Star Block (Block 1), use (4) units made in Step 1, (4) units made in Step 2 and (1) 4 1/2" blue print square. Assemble as shown above. Press and trim to 12 1/2" X 12 1/2".

Repeat to make (7) blocks.

## Churn Dash Blocks (Block 2)

1.



Make (24) units, as shown. Press and trim each unit to 4 1/2" X 4 1/2".

2.



Make (24) units, as shown. Press and trim each unit to 4 1/2" X 4 1/2".

3.



For each Churn Dash Block (Block 2), use (4) units made in Step 1, (4) units made in Step 2 and (1) 4 1/2" pink with dots square. Assemble as shown above. Press and trim to 12 1/2" X 12 1/2".

Repeat to make (6) blocks.

## Setting Triangles

1.



Make (16) units, as shown. Press and trim each unit to 4 1/2" X 4 1/2".

2.



Make (8) units, as shown.



Make (8) units, as shown.

WINDHAM FABRICS

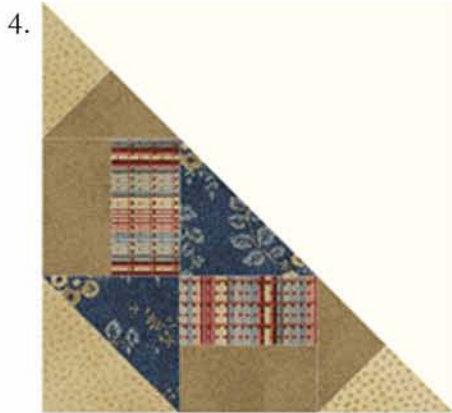


# Alice's Stars

Page 5



Make (8) units, as shown. Press and trim to 4 1/2" X 4 1/2".



For each setting triangle, use (2) units made in Step 1, (1) of each unit made in Step 2, (1) unit made in Step 3 and (1) blue print triangle. Assemble as shown above. Repeat to make (8) setting triangles.

## Corner Triangle



Make (4) units, as shown.



Make (4) units, as shown.



Make (4) units, as shown.



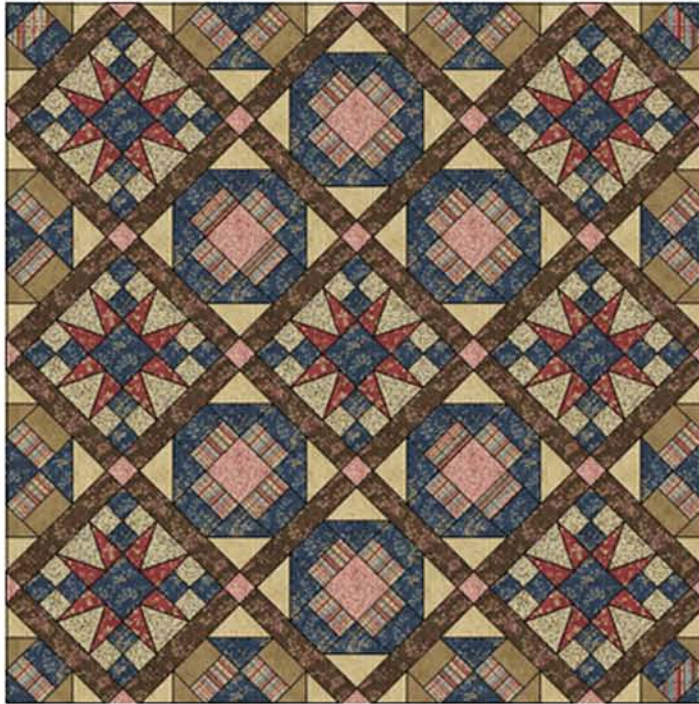
For each corner triangle, use (1) unit made in Step 1, and (1) of each unit made in Step 2. Assemble as shown above. Repeat to make (4) corner triangles.



# Alice's Stars

Page 6

## Assembly



Referring to quilt picture above, sew blocks, sashing, keystones, setting triangles, and corner triangles together into diagonal strips. Sew strips together. Quilt center should now measure  $59 \frac{7}{8}$ " X  $59 \frac{7}{8}$ ".

### Border 1

Sew (1)  $3 \frac{1}{2}$ " X  $59 \frac{7}{8}$ " strip to each side of quilt center.

Sew (1)  $3 \frac{1}{2}$ " X  $65 \frac{7}{8}$ " strip to top of quilt center and one strip to bottom of quilt center.

Quilt center should now measure  $65 \frac{7}{8}$ " X  $65 \frac{7}{8}$ ".

### Border 2

Sew (1)  $2 \frac{1}{2}$ " X  $65 \frac{7}{8}$ " strip to each sides of quilt center.

Sew (1)  $2 \frac{1}{2}$ " X  $69 \frac{7}{8}$ " strip to top of quilt center and one strip to bottom of quilt center.

Quilt center should now measure  $69 \frac{7}{8}$ " X  $69 \frac{7}{8}$ ".

### Border 3

Sew (1)  $3 \frac{1}{2}$ " X  $69 \frac{7}{8}$ " strip to each side of quilt center.

Sew (1)  $3 \frac{1}{2}$ " X  $75 \frac{7}{8}$ " strip to top of quilt center and one strip to bottom of quilt center.

Quilt center should now measure  $75 \frac{7}{8}$ " X  $75 \frac{7}{8}$ ".

Quilt and Bind, as desired.

## Enjoy!

**Feel free to download additional copies of this and other Free Projects  
by visiting our website: [www.windhamfabrics.com](http://www.windhamfabrics.com)**

**WINDHAM FABRICS**

