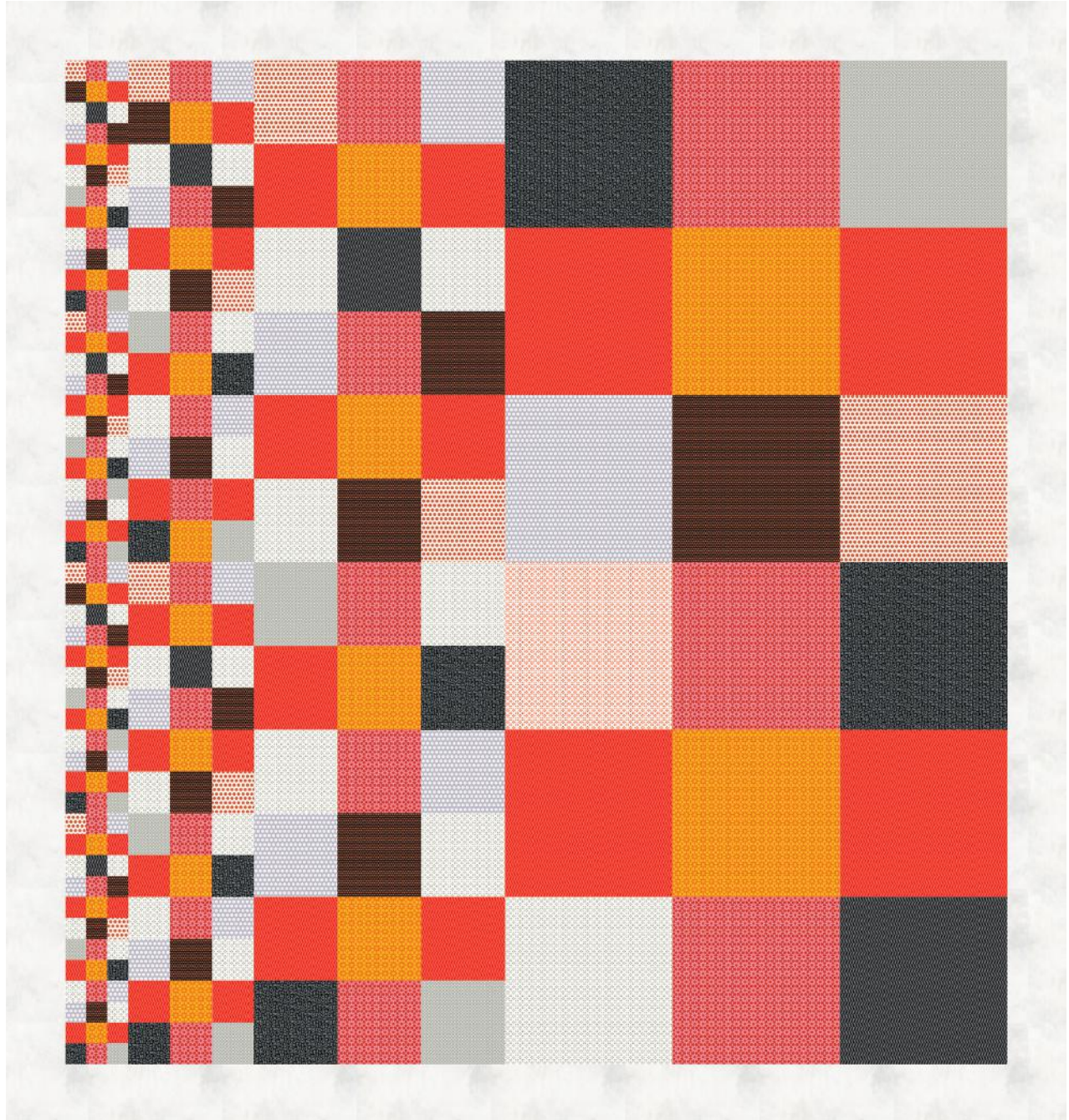


# Uppercase - Halfies

Designed by Janine Vangool  
Featuring the Uppercase Collection by Janine Vangool  
Size: 75 ½" x 80"



Check [www.windhamfabrics.com](http://www.windhamfabrics.com) Free Project section to see if there are any pattern updates before you start your quilt project



812 Jersey Ave – Jersey City, NJ 07310 – 201.659.0444 ~ FAX: 201.659.9719  
[www.windhamfabrics.com](http://www.windhamfabrics.com) email: [retail@windhamfabrics.com](mailto:retail@windhamfabrics.com)

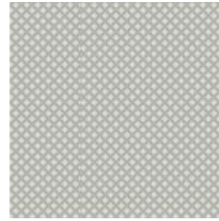


# Uppercase - Halfies

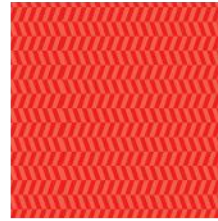
Page 2

## Estimated Fabric Requirements:

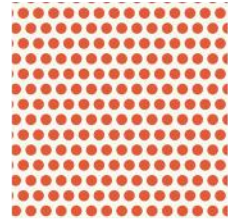
- ½ yard – 41826-3 Grey
- 1 ⅛ yards – 41825-2 Orange
- ½ yard – 41823-2 Orange/White
- ⅝ yard – 41827-5 Black
- ½ yard – 41825-3 Grey
- ⅞ yard – 41824-4 Pink
- ⅔ yard – 41824-2 Orange
- ⅔ yard – 41820-2 Orange/Black
- ¾ yard – 41822-3 Grey
- ½ yard – 41822-2 Orange
- ⅔ yard – 41823-3 White/Grey
- 1 ⅛ yards – 37098-12 Chalk
- ⅔ yard – 41820-3 Grey/Black
- 5 yards – 41823-1 Turq./White



41826-3 Grey



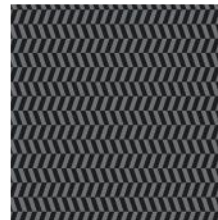
41825-2 Orange



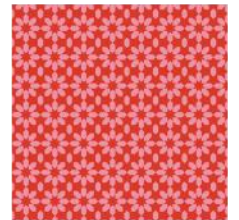
41823-2 Orange/White



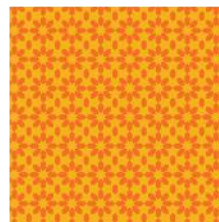
41827-5 Black



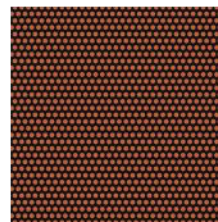
41825-3 Grey



41824-4 Pink



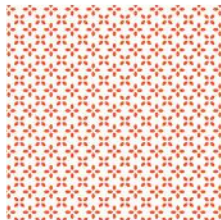
41824-2 Orange



41820-2 Orange/Black



41822-3 Grey



41822-2 Orange



41823-3 White/Grey



37098-12 Chalk



41820-3 Grey/Black



41823-1 Turq./White



WINDHAM FABRICS

www.windhamfabrics.com

# Uppercase - Halfies

Page 3

## Cutting Instructions:

Fabric A: Letters – Grey

- Cut one 12 ½" x WOF strip. Sub-cut the strip into one 12 ½" square, two 6 ½" squares and four 3 ½" squares.
- Cut one 2" x WOF strip. Sub-cut the strip into ten 2" squares.

Fabric B: Zig Zag – Orange

- Cut two 12 ½" x WOF strips. Sub-cut the strip into four 12 ½" squares, one 6 ½" square, one 3 ½" square and six 2" squares.
- Cut one 6 ½" x WOF strip. Sub-cut the strip into six 6 ½" squares.
- Cut one 3 ½" x WOF strip. Sub-cut the strip into twelve 3 ½" squares.
- Cut one 2" x WOF strip. Sub-cut the strip into twenty 2" squares.

Fabric C: Dots – Orange/White

- Cut one 12 ½" x WOF strip. Sub-cut the strip into one 12 ½" square, two 6 ½" squares, four 3 ½" squares and eight 2" squares.

Fabric D: Letters – Black

- Cut one 12 ½" x WOF strip. Sub-cut the strip into two 12 ½" squares and two 6 ½" squares.
- Cut one 3 ½" x WOF strip. Sub-cut the strip into four 3 ½" squares and eight 2" squares.

Fabric E: Zig Zag – Grey

- Cut one 12 ½" x WOF strip. Sub-cut the strip into one 12 ½" square, one 6 ½" square, two 3 ½" squares and four 2" squares.

Fabric F: Star Flower – Pink

- Cut one 12 ½" x WOF strip. Sub-cut the strip into three 12 ½" squares.
- Cut one 6 ½" x WOF strip. Sub-cut the strip into five 6 ½" squares.
- Cut one 3 ½" x WOF strip. Sub-cut the strip into ten 3 ½" squares.
- Cut one 2" x WOF strip. Sub-cut the strip into twenty 2" squares.

Fabric G: Star Flower – Orange

- Cut one 12 ½" x WOF strip. Sub-cut the strip into two 12 ½" squares and eight 3 ½" squares.
- Cut one 6 ½" x WOF strip. Sub-cut the strip into four 6 ½" squares and sixteen 2" squares.

Fabric H: Dots – Orange/Black

- Cut one 12 ½" x WOF strip. Sub-cut the strip into one 12 ½" square and three 6 ½" squares.
- Cut one 3 ½" x WOF strip. Sub-cut the strip into seven 3 ½" squares.
- Cut one 2" x WOF strip. Sub-cut the strip into fourteen 2" squares.



WINDHAM FABRICS

[www.windhamfabrics.com](http://www.windhamfabrics.com)

# Uppercase - Halfies

Page 4

## Cutting Instructions - Continued:

Fabric I: Petals – Grey

- Cut one 12 ½" x WOF strip. Sub-cut the strip into one 12 ½" square, twelve 3 ½" squares and three 2" squares.
- Cut one 6 ½" x WOF strip. Sub-cut the strip into six 6 ½" squares.
- Cut one 2" x WOF strip. Sub-cut the strip into twenty 2" squares.

Fabric J: Petals – Orange

- Cut one 12 ½" square.

Fabric K: Dots – White/Grey

- Cut one 12 ½" x WOF strip. Sub-cut the strip into one 12 ½" square and four 6 ½" squares.
- Cut one 3 ½" x WOF strip. Sub-cut the strip into eight 3 ½" squares.
- Cut one 2" x WOF strip. Sub-cut the strip into fifteen 2" squares.

Fabric L: Palette – Chalk

- Cut four 4 ½" x WOF strips. Sew the strips together end to end with diagonal seams and cut two 4 ½" x 72 ½" strips.
- Cut four 4 ½" x WOF strips. Sew the strips together end to end with diagonal seams and cut two 4 ½" x 76" strips.

Fabric M: Dots – Grey/Black

- Cut eight 2 ½" x WOF strips for the binding.

Backing: Dots – Turq./White

- Cut two 88" x WOF strips. Sew the strips together and trim to 84" x 88" for the pieced back.

## Quilt Assembly – *Refer to the Quilt Layout while assembling the quilt top:*

1. Sew forty-eight assorted 2" squares into one 2" column. Repeat to make three 2" columns total.
2. Sew twenty-four assorted 3 ½" squares into one 3 ½" column. Repeat to make three 3 ½" columns total.
3. Sew twelve assorted 6 ½" squares into one 6 ½" column. Repeat to make three 6 ½" columns total.
4. Sew six assorted 12 ½" squares into one 12 ½" column. Repeat to make three 12 ½" columns total.
5. Sew the twelve columns together lengthwise to make the quilt top.
6. Sew one 4 ½" x 72 ½" Fabric L strip to each side of the quilt top. Sew one 4 ½" x 76" Fabric L strip to the top and to the bottom of the quilt top.



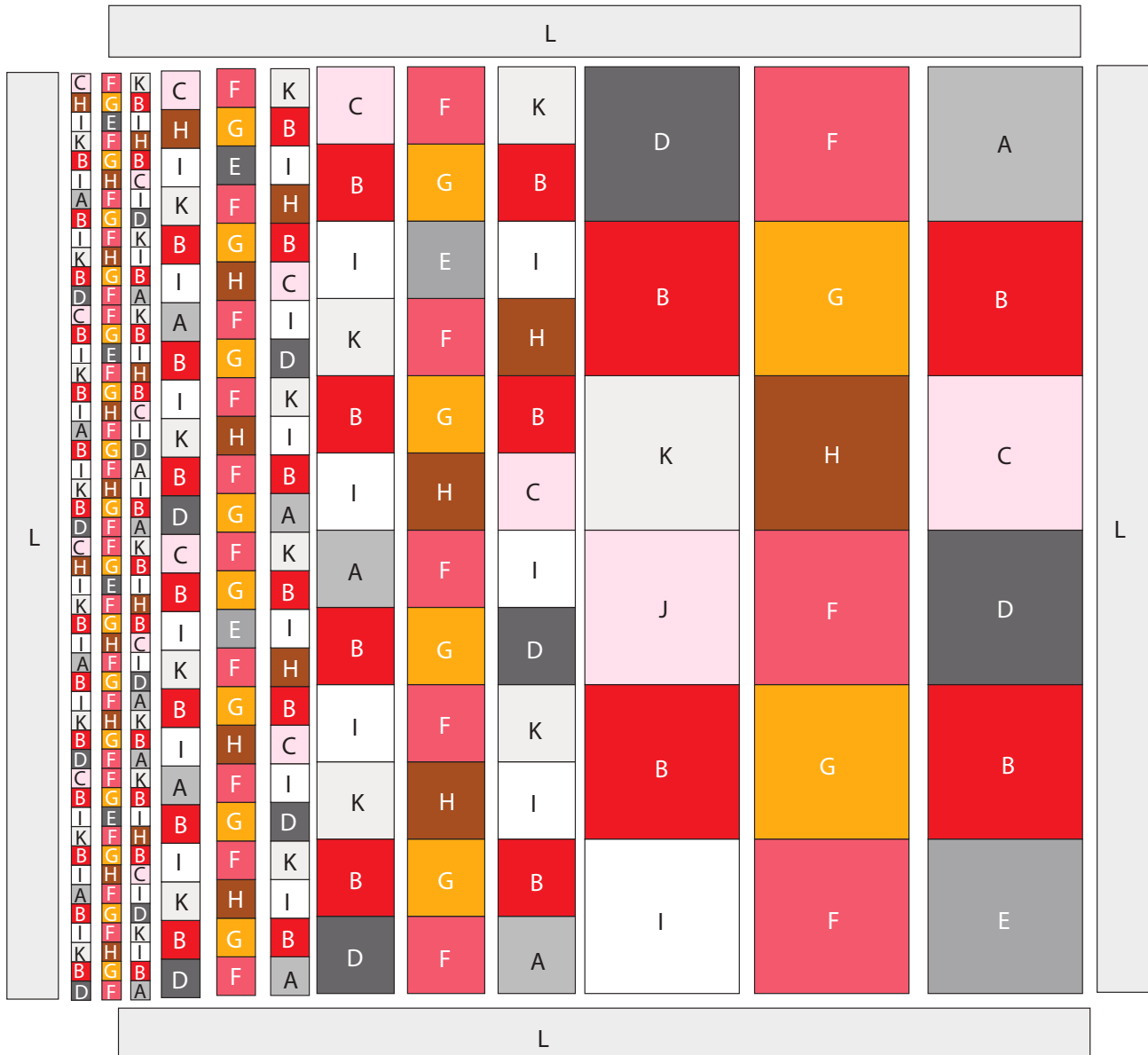
WINDHAM FABRICS

[www.windhamfabrics.com](http://www.windhamfabrics.com)

# Uppercase - Halfies

Page 5

7. Layer and quilt as desired.
8. Sew the eight 2 1/2" x WOF Fabric M strips together, end to end with 45-degree seams, to make the binding. Fold this long strip in half, lengthwise with wrong sides together, and press.
9. Bind as desired.



Quilt Layout

Be sure to visit [www.windhamfabrics.com](http://www.windhamfabrics.com) to see the complete collection and to download this and other FREE Projects