

Turbine

Designed by Diane Nagel
Featuring the Carmen collection by Nancy Gere
Size: 63" x 80"



Check www.windhamfabrics.com Free Project section to see if there are any pattern updates before you start your quilt project

WINDHAM FABRICS

812 Jersey Ave ~ Jersey City, NJ 07310 ~ 201.659.0444 ~ FAX: 201.659.9719
www.windhamfabrics.com email: retail@windhamfabrics.com

Turbine

Page 2

Finished Blocks 1-10: 12" x 12"

Materials:

- Fabric A: 41045-1 Red ¼ yard
- Fabric B: 41048-3 Black ¼ yard
- Fabric C: 41040-1 Red ¼ yard
- Fabric D: 41047-4 Cream 1/8 yard
- Fabric E: 41047-2 Tan 3/8 yard
- Fabric F: 41044-1 Red 3/8 yard
- Fabric G: 41041-1 Red/cream 3/8 yard
- Fabric H: 41041-2 Tan/cream ¼ yard
- Fabric I: 41048-1 Red ¼ yard
- Fabric J: 41048-4 Cream 2 ¼ yards
- Fabric K: 41039-2 Tan ½ yard
- Fabric L: 41040-3 Black ¼ yard
- Fabric M: 41048-2 Tan 3/8 yard
- Fabric N: 41045-3 Black 3/8 yard
- Fabric O: 41042-3 Black 3/8 yard
- Fabric P: 41042-1 Red 1/8 yard
- Fabric Q: 41043-3 Black ½ yard
- Fabric R: 41038-2 Tan 1 ¼ yards
- Fabric S: 41046-1 Red stripe 5/8 yard Binding
- Backing fabric of choice 4 7/8 yards



41045-1 Red



41048-3 Black



41040-1 Red



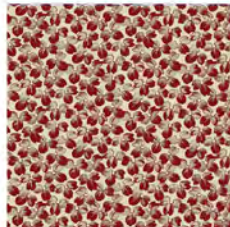
41047-2 Cocoa



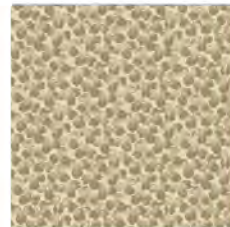
41047-4 Cream



41044-1 Red



41041-1 Red



41041-2 Cocoa



41048-1 Red



41045-3 Black



41048-2 Cocoa



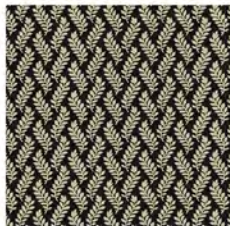
41040-3 Black



41039-2 Cocoa



41048-4 Cream



41042-3 Black



41042-1 Red



41043-3 Black



41038-2 Cocoa



41046-1 Red



WINDHAM FABRICS

Turbine

Page 3

Cutting:

- Fabric A: (3) strips 1 ½" x width of fabric (WOF). Sub cut (2) 1 ½" x 10 ½" rectangles, (3) 1 ½" x 12 ½" rectangles, and (1) 1 ½" x 13 ½" rectangle.
(1) strip 2" x WOF. Sub cut (12) 2" squares.
- Fabric B: (1) strip 3 1/2" x WOF. Sub cut (8) 2" x 3 ½" rectangles.
(1) strip 2" x WOF. Sub cut (16) 2" squares.
(1) strip 1 ½" x WOF. Sub cut (1) 1 ½" x 12 ½" rectangle, (1) 1 ½" x 13 ½" rectangle.
- Fabric C: (2) strips 1 ½" x WOF. Sub cut (2) 1 ½" x 12 ½" rectangles, (2) 1 ½" x 13 ½" rectangles.
(1) strip 3 ½" x WOF. Sub cut (16) 2" x 3 ½" rectangles.
- Fabric D: (1) strip 2" x WOF. Sub cut (8) 2" squares.
- Fabric E: (1) strip 1 ½" x WOF. Sub cut (1) 1 ½" x 12 ½" rectangle, (1) 1 ½" x 13 ½" rectangle.
(2) strips 3 ½" x WOF. Sub cut (24) 2" x 3 ½" rectangles.
- Fabric F: (4) strips 1 ½" x WOF. Sub cut (4) 1 ½" x 10 ½" rectangles, (6) 1 ½" x 12 ½" rectangles, (2) 1 ½" x 13 ½" rectangles.
(1) strip 3 ½" x WOF. Sub cut (4) 2" x 3 ½" rectangles.
- Fabric G: (3) strips 1 ½" x WOF. Sub cut (4) 1 ½" x 10 ½" rectangles, (4) 1 ½" x 12 ½" rectangles, and (1) 1 ½" x 15".
(1) strip 3 ½" x WOF. Sub cut (4) 2" x 3 ½" rectangles.
- Fabric H: (2) strips 1 ½" x WOF. Sub cut (1) 1 ½" x 10 ½" rectangle, (2) 1 ½" x 12 ½" rectangles, and (1) 1 ½" x 13 ½" rectangle.
(1) strip 3 ½" x WOF. Sub cut (8) 2" x 3 ½" rectangles. Trim strip down to 2" wide, sub cut (8) 2" squares.
- Fabric I: (1) 1 ½" x 15" rectangle.
(1) strip 3 ½" x WOF. Sub cut (8) 2" x 3 ½" rectangles. Trim strip down to 2" wide and sub cut (8) 2" squares.
- Fabric J: (10) strips 2" x WOF. Sub cut (192) 2" squares.
(2) strips 6 ½" x WOF. Sub cut (32) 2 ½" x 6 ½" rectangles.
(2) strips 10 ½" x WOF. Sub cut (32) 2 ½" x 10 ½" rectangles.
(1) strip 10 7/8" x WOF. Sub cut (5) 10 7/8" squares, cut once on diagonal.
(1) strip 11 ¼" x WOF. Sub cut (1) 11 ¼" square, cut twice on diagonal.
- Fabric K: (5) strips 1 ½" x WOF. Sub cut (6) 1 ½" x 10 ½" rectangles, (7) 1 ½" x 12 ½" rectangles, (1) 1 ½" x 15", and (1) 1 ½" x 13 ½".
(1) strip 3 ½" x WOF. Sub cut (20) 2" x 3 ½" rectangles.
(1) strip 2" x WOF. Sub cut (4) 2" squares.
- Fabric L: (3) strips 1 ½" x WOF. Sub cut (4) 1 ½" x 10 ½" rectangles, (4) 1 ½" x 12 ½" rectangles.
(1) strip 2" x WOF. Sub cut (8) 2" squares.
- Fabric M: (3) strips 1 ½" x WOF. Sub cut (1) 1 ½" x 15" rectangle, (4) 1 ½" x 10 ½" rectangles, and (4) 1 ½" x 12 ½" rectangles.
(1) strip 3 ½" x WOF. Sub cut (8) 2" x 3 ½" rectangles.



WINDHAM FABRICS

Turbine

Page 4

Fabric N: (4) strips 1 1/2" x WOF. Sub cut (4) 1 1/2" x 10 1/2" rectangles, (6) 1 1/2" x 12 1/2" rectangles, (2) 1 1/2" x 13 1/2" rectangles.
(1) strip 3 1/2" x WOF. Sub cut (12) 2" x 3 1/2" rectangles.

Fabric O: (3) strips 1 1/2" x WOF. Sub cut (4) 1 1/2" x 10 1/2" rectangles, (5) 1 1/2" x 12 1/2" rectangles, (1) 1 1/2" x 13 1/2" rectangles.
(1) strip 3 1/2" x WOF. Sub cut (8) 2" x 3 1/2" rectangles.

Fabric P: (1) strip 2" x WOF. Sub cut (8) 2" squares.

Fabric Q: (6) strips 1 1/2" x WOF. Sew end to end and sub cut (2) 1 1/2" x 68 3/8" inner side borders. Sub cut (2) 1 1/2" x 53 1/2" inner top and bottom borders.
(1) strip 3 1/2" x WOF. Sub cut (8) 2" x 3 1/2" rectangles.

Fabric R: (7) strips 5 1/2" x WOF. Sew end to end and sub cut (2) 5 1/2" x 70 3/8" side outer borders, (2) 5 1/2" x 63 1/2" top and bottom outer borders.

Fabric S: (8) strips 2 1/2" x WOF for binding.

Instructions:

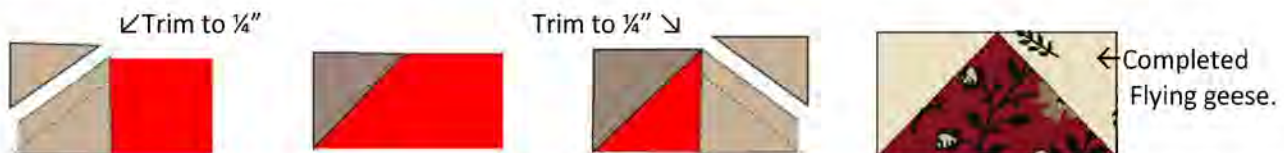
Pinwheel Block Assembly:

All blocks in this quilt are constructed the same way, with the exception of color changes. Follow the piecing directions and color key charts for all 9 different block color ways as shown below.

Draw a diagonal line on the wrong side of all Fabric A, B, D, H, I, K, L, P and J(background) 2" squares. Set aside.

Block 1:

1. With right sides together position a Fabric J(background) 2" square on the left corner of a Fabric C(red) 2" x 3 1/2" Triangle. Sew on the diagonal line as shown in Diagram 1. Trim away excess fabric, leaving a 1/4" seam allowance and press to the outer corner. Repeat on right side of unit to complete the flying geese. Make 4. Diagram 1. ↓



2. Repeat the Diagram 1 directions to make a flying geese unit, sewing a Fabric J(background) 2" square to the left side of a Fabric K 2" x 3 1/2" rectangle, and a Fabric B 2" square to the right side of the unit. See Diagram 2. Make 4.



Diagram 2.

3. Sew a tan/black flying geese unit in Diagram 2 to the bottom of the red flying geese unit in Diagram 1 to complete a Double Flying Geese unit. See Diagram 3. Make 4.



Diagram 3.



← Diagram 4.

Turbine

Page 5

4. Rotate $\frac{1}{4}$ turn and sew a second Double Flying Geese unit to the first unit as shown in Diagram 4. Make 2.
5. Rotate and sew the second unit in Diagram 4 to the bottom of the first to complete the block center.
6. Sew a Fabric J (background) $2\frac{1}{2}'' \times 6\frac{1}{2}''$ rectangle to both sides of the block center. See Diagram 5.
7. Sew a Fabric J(background) $2\frac{1}{2}'' \times 10\frac{1}{2}''$ rectangle to the top and bottom of the block. See Diagram 6.
8. Sew a Fabric A $1\frac{1}{2}'' \times 10\frac{1}{2}''$ strip to the sides of the block. Sew a Fabric A $1\frac{1}{2}'' \times 12\frac{1}{2}''$ strip to the top and bottom of the block to complete Block 1. See Diagram 7. Make 1 of Block 1.



Diagram 5



Diagram 6



Diagram 7.

Repeat the Block Assembly instructions above to make the remainder of the 18 total blocks. Make the following color changes for Blocks 2-10. Note: *The 2" square background fabric J will always be listed first, then the 2" x 3 1/2" rectangle color for Diagram 1. The background fabric J 2" square, the 2" x 3 1/2" rectangle and the colored print 2" square will be listed in that order for the Diagram 2 instructions. Diagram 5 and 6 will always be J(background) and Diagram 7 will be listed last for the border of the block.*

Blocks 2: Diagram 1-- Fabrics J and M. Diagram 2-- Fabrics J, C and D. Diagram 7--Fabric L. Make 2.

Blocks 3: Diagram 1—Fabrics J and N. Diagram 2—Fabrics J, E and A. Diagram 7—Fabric K. Make 3.

Block 4: Diagram 1—Fabrics J and E. Diagram 2—Fabrics J, B and I. Diagram 7--Fabric O. Make 1.

Blocks 5: Diagram 1-- Fabrics J and I. Diagram 2—Fabrics J, K and B. Diagram 7—Fabric G. Make 2.

Blocks 6: Diagram 1—Fabrics J and O. Diagram 2—Fabrics J, F and L. Diagram 7—Fabric M. Make 2.

Block 7: Diagram 1- -Fabrics J and L. Diagram 2-- Fabrics J, G and K. Diagram 7—Fabric C. Make 1.

Blocks 8: Diagram 1—Fabrics J and Q. Diagram 2—Fabrics J, H and P. Diagram 7—Fabric N. Make 2.

Block 9: Diagram 1- Fabrics J and C. Diagram 2—Fabrics J, E and B. Diagram 7—Fabric H. Make 1.

Blocks 10: Diagram 1- Fabrics J and C. Diagram 2—Fabrics J, K and H. Diagram 7—Fabric F. Make 2.

Setting Triangles:

1. Sew a Fabric A $1\frac{1}{2}'' \times 13''$ strip the right short side of a Fabric J $10\frac{7}{8}''$ triangle. Sew a Fabric A $1\frac{1}{2}'' \times 15''$ strip to the left short side (there will be "tails" that hang off of the end of the triangle).
2. After pressing to the red, lay a long ruler along the base of the triangle unit and trim off the red "tails" even with the triangle base. See Diagram 8. Make 1.

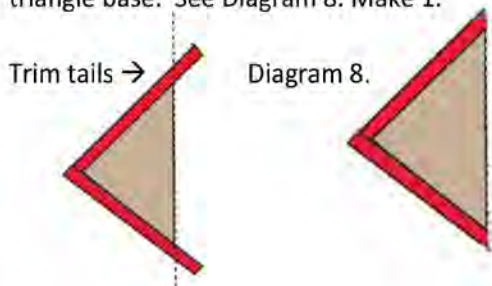


Diagram 8.



WINDHAM FABRICS

Turbine

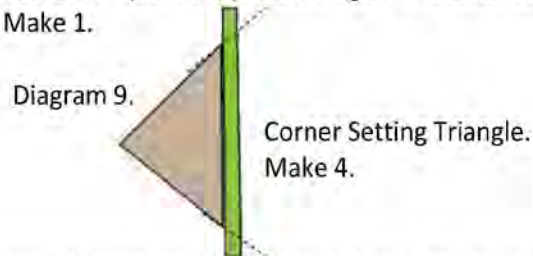
Page 6

3. Repeat the instructions from Diagram 8 to make the remaining (9) setting triangles:

Use (1) 1 ½" x 13" strip and (1) 1 ½" x 15" strip to make a setting triangle from each of Fabrics B, E, (2) F, H, K, (2) N's, and O. *Note there are 2 setting triangles for Fabrics F and N.*

Corner Setting Triangles:

1. Sew a Fabric I 1 ½" x 15" strip to the long side of a Fabric J 11 ¼" quarter square triangle. The tails will extend beyond the triangle. Trim tails with ruler as shown in Diagram 9. Make 1.



2. Repeat these instructions to make the remaining (3) Corner Setting Triangles: Sew a 1 ½" x 15" strip each from Fabrics M, K, and G to the long side the 3 remaining Fabric J 11 ¼" quarter square triangles. Set aside.

Quilt Center Assembly:

The quilt center is set on point, so it will be sewn together in diagonal rows using the side setting and corner setting triangles where needed in addition to the blocks. Follow Diagram 10 for the placement and rotation of each block, and sew each row in the order stated from left to right. *Note: The corner and side setting triangles are described by the fabric strip on the edge of those triangles.*

Row 1. Fabric N Side Setting Triangle, Block 1, Fabric K Side Setting Triangle. Sew a Fabric M Corner Setting Triangle to the upper left corner of Block 1.

Row 2. Fabric F Side Setting Triangle, Block 6, Blocks 4, Block 2, Fabric O Side Setting Triangle.

Row 3. Fabric E Side Setting Triangle, Block 5, Block 3, Block 7, Block 5, Block 3 and Fabric I Corner Setting Triangle.

Row 4. Fabric G Corner Setting Triangle, Block 8, Block 2, Block 10, Block 9, Block 8 and Fabric H Side Setting Triangle.

Row 5. Fabric F Side Setting Triangle, Block 4, Block 3, Block 6, Fabric A Side Setting Triangle.

Row 6. Fabric N Side Setting Triangle, Block 10, Fabric B Side Setting Triangle. Sew a Fabric K Corner Setting Triangle to the bottom right corner of Block 10 in the row. * See Diagram 10 on last page.

Inner Border:

1. Sew the Fabric Q 1 ½" x 68 3/8" strips to the sides of the quilt.

2. Sew the Fabric Q 1 ½" x 53 ½" strips to the top and bottom of the quilt.

Outer Border:

1. Sew the Fabric R 5 ½" x 70 3/8" strips to the sides of the quilt.

2. Sew the Fabric R 5 ½" x 63 ½" strips to the top and bottom of the quilt.

Layer quilt, quilt as desired and bind using the Fabric S 2 ½" strips.

Be sure to visit www.windhamfabrics.com to see the complete collection
and to download other Free Projects

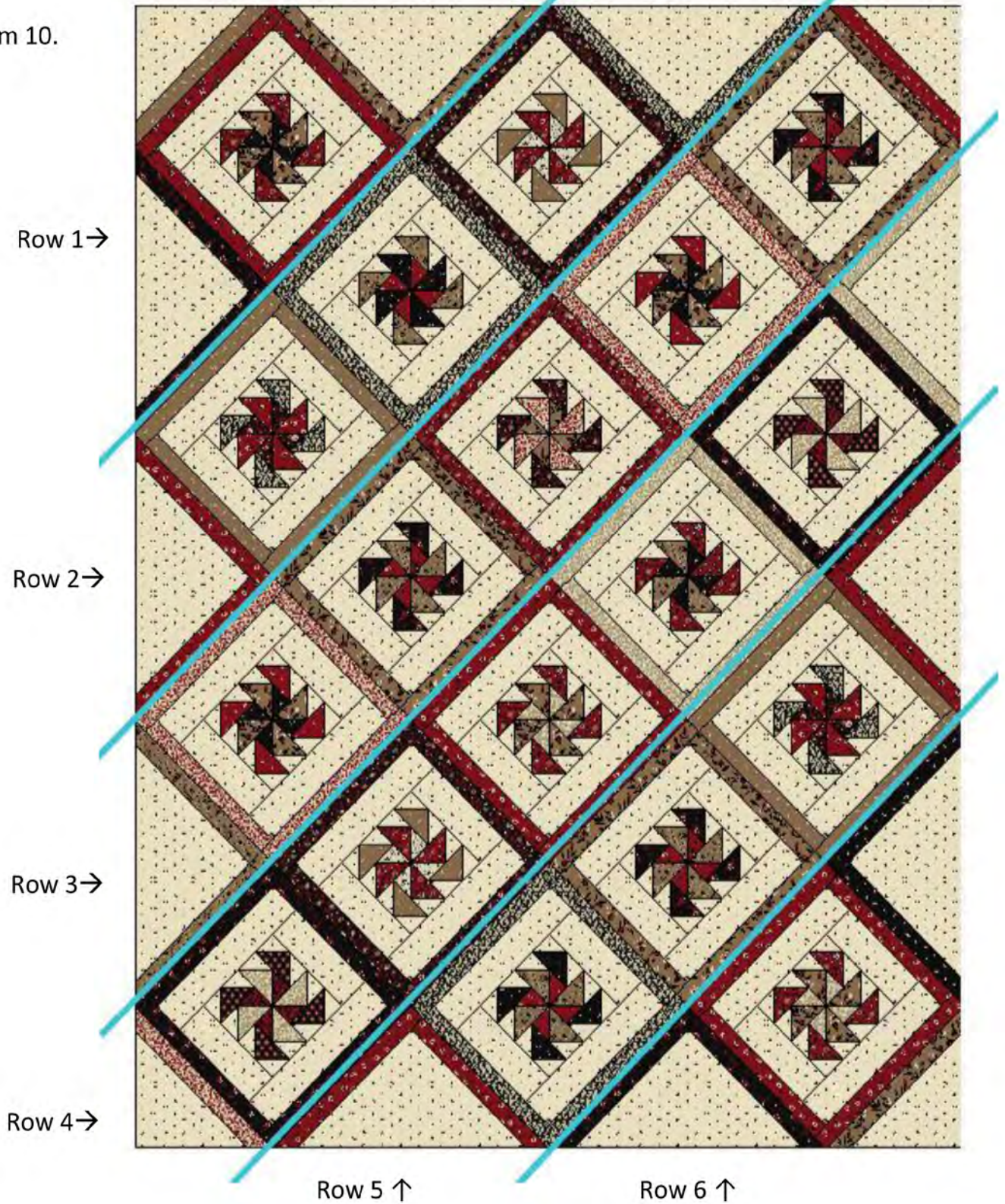


WINDHAM FABRICS

Turbine

Page 7

*Diagram 10.



WINDHAM FABRICS