

Irish Chain

Designed by Mary Koval

Featuring the Tree of Life ca 1830 Collections by Mary Koval

Size: 90" x 112"



Check www.windhamfabrics.com Free Project section to see if there are any pattern updates before you start your quilt project

WINDHAM FABRICS

812 Jersey Ave ~ Jersey City, NJ 07310 ~ 201.659.0444 ~ FAX: 201.659.9719
www.windhamfabrics.com email: retail@windhamfabrics.com

Irish Chain

Page 2

Fabric Selections



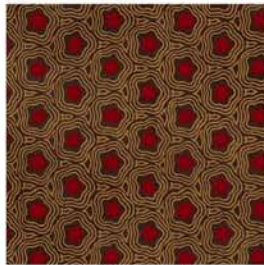
40360-1 Beige



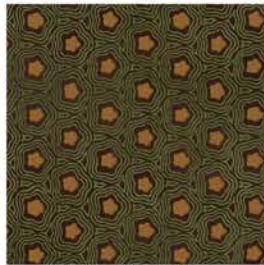
40360-X Multi



40361-2 Blue



40361-3 Brown



40361-4 Green



40362-2 Blue



40362-3 Brown



40362-5 Red



40363-2 Blue



40363-4 Green



40363-5 Red



40364-2 Blue



40364-3 Brown



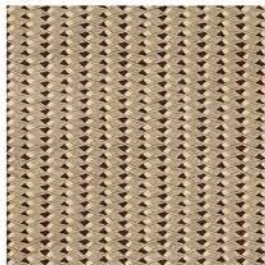
40365-3 Brown



40365-6 Tan



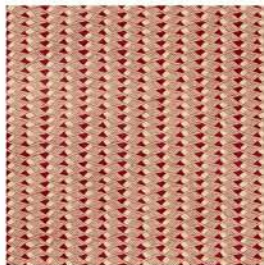
40365-7 Yellow



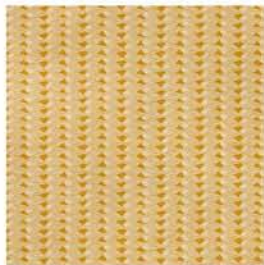
40366-3 Brown



40366-4 Green



40366-5 Red



40366-7 Yellow



40367-3 Brown



40367-4 Green



40367-5 Red



40368-2 Blue



40368-3 Brown



40368-5 Red

Irish Chain

Page 3

Finished Block A: 10" x 10"

Finished Block B: 10" x 10"

MATERIALS:

3/8 yard each of (25) Assorted light, medium and dark prints

(40360-X Multi, 40361-2 Blue, 40361-3 Brown, 40361-4 Green, 40362-2 Blue, 40362-3 Brown, 40362-5 Red, 40363-2 Blue, 40363-4 Green, 40363-5 Red, 40364-2 Blue, 40364-3 Brown, 40365-3 Brown, 40365-6 Tan, 40365-7 Yellow, 40366-3 Brown, 40366-4 Green, 40366-5 Red, 40366-7 Yellow, 40367-3 Brown, 40367-4 Green, 40367-5 Red, 40368-2 Blue, 40368-3 Brown, 40368-5 Red)

7/8 yard of a dark blue floral stripe (40363-2 Blue) for binding

4-1/2 yards of a beige tonal (40360-1 Beige)

8-1/4 yards of backing fabric

98" x 120" piece of batting

CUTTING:

From each of the (25) Assorted light, medium and dark prints, cut:

(4) 2-1/2" x 42" strips, cut in half lengthwise to make (8) 21" lengths

From the dark blue floral stripe, cut:

(11) 2-1/2" x 42" strips for binding

From the beige tonal, cut:

(40) 6-1/2" x 6-1/2" squares

(80) 2-1/2" x 6-1/2" rectangles

(5) 2-1/2" x 10-1/2" rectangles

(11) 2-1/2" x 42" strips, cut in half lengthwise to make (22) 21" lengths

(6) 6-1/2" x 42" strips, cut in half lengthwise to make (12) 21" lengths

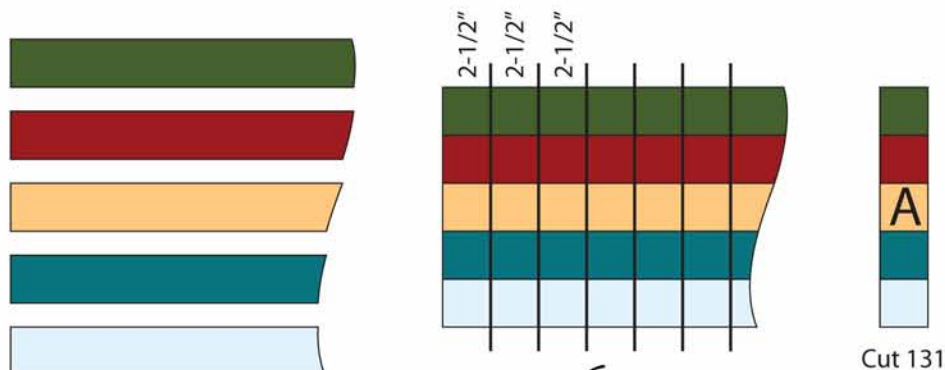
INSTRUCTIONS:

Making the Block Segments:

1. Sew (5) 2-1/2" x 21" assorted light, medium and dark strips together lengthwise to make a 5-strip panel. Press seams in one direction. Make 17 panels.

2. Crosscut the panels into 2-1/2" segments for a total of (131) 2-1/2" x 10-1/2" segments. Label as segment A.

Diagram 1



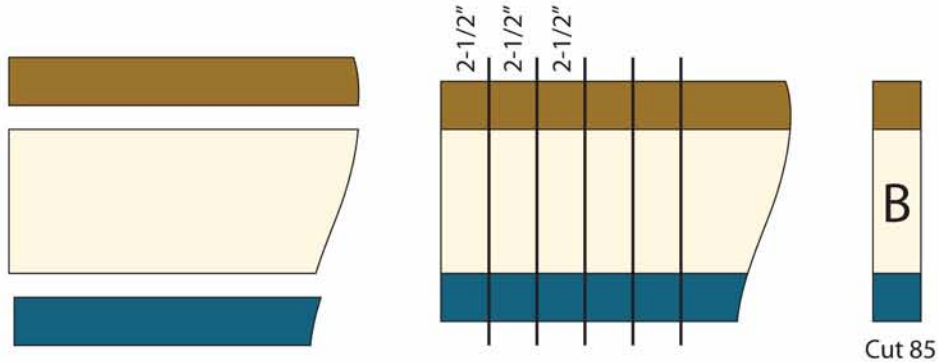
WINDHAM FABRICS

Irish Chain

Page 4

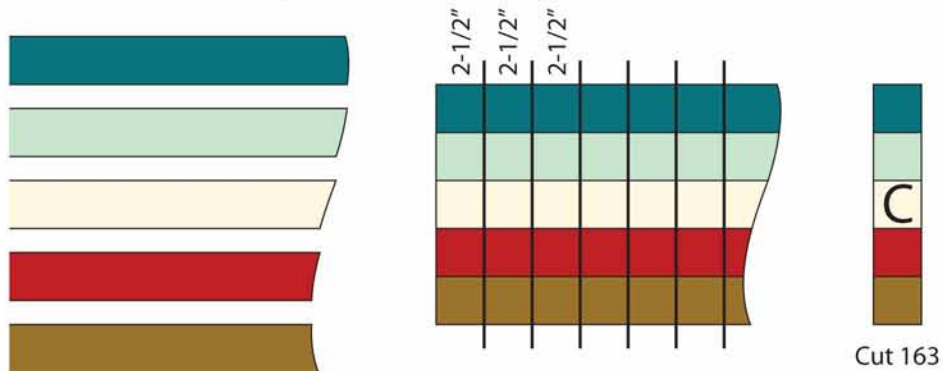
- Sew (1) 6-1/2" x 21" beige tonal strip between (2) 2-1/2" x 21" assorted light, medium and dark strips lengthwise to make a 3-strip panel. Press seams in one direction. Make 11 panels.
- Crosscut the panels into 2-1/2" segments for a total of (85) 2-1/2" x 10-1/2" segments. Label segment B.

Diagram 2



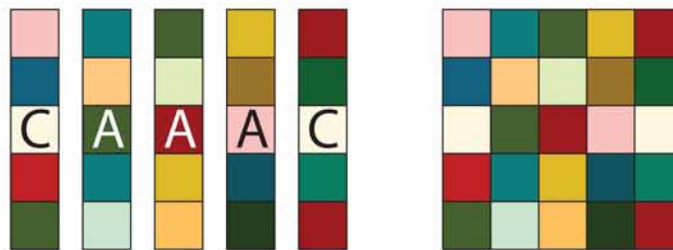
- Sew (1) 2-1/2" x 21" beige tonal strip and (4) 2-1/2" x 21" assorted light, medium and dark strips lengthwise to make a 5-strip panel. Press seams in one direction. Make 21 panels.
- Crosscut the panels into 2-1/2" segments for a total of (163) 2-1/2" x 10-1/2" segments. Label segment C.

Diagram 3



Making Block A:

- Lay out (3) A segments between (2) C segments as shown.
- Sew the segments together to make Block A. Press seams in one direction. Make 41 blocks. (Set aside remaining A and C segments for sashing).



Block A - Make 41

Diagram 4

WINDHAM FABRICS

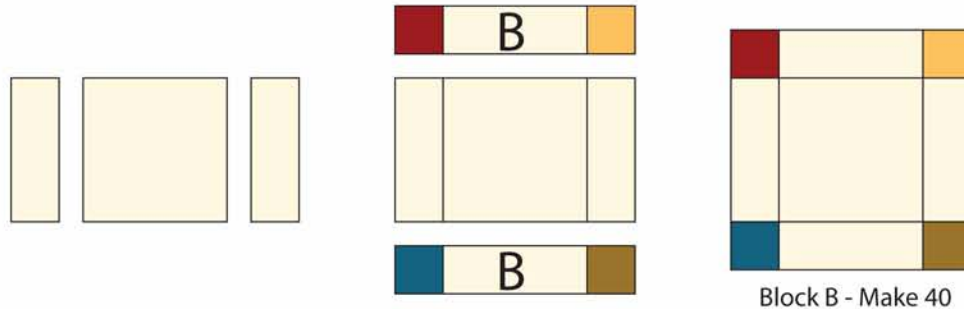
Irish Chain

Page 5

Making Block B:

1. Sew (2) 2-1/2" x 6-1/2" beige tonal rectangles to opposite sides of (1) 6-1/2" x 6-1/2" beige tonal square. Press seams toward rectangles.
2. Sew (2) B segments to the top and bottom of the square to make Block B. Press seams toward B segments. Make 40 blocks. (Set aside remaining B segments for sashing).

Diagram 5

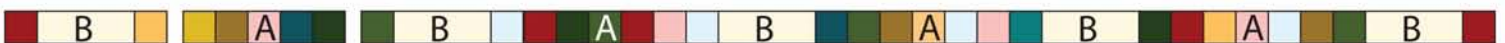


Making the Sashing Strips:

1. Sew (9) C segments together, end to end, to make sashing #1. Press seams in one direction. Make 9 sashing #1 strips.
2. Sew (5) B segments, alternating with (4) A segments, end to end, to make sashing #2. Press seams in one direction.
3. Sew (5) 2-1/2" x 10-1/2" beige tonal rectangles, alternating with (4) A segments, end to end, to make sashing #3. Press seams in one direction.



Sashing #1 - Make 9



Sashing #2



Sashing #3

Diagram 6

Assembling the Quilt:

1. Lay out the A blocks, alternating with the B blocks in 9 rows of 9 blocks each as shown. Sew the blocks together in each row. Press seams to B blocks.
2. Sew the 9 block rows, alternating with the 9 sashing #1 strips as shown. Press seams to sashing #1 strip.
3. Sew sashing #2 strip to the bottom of the quilt.
4. Sew sashing #3 strip to the bottom of the quilt to complete the quilt top.

Irish Chain

Page 6

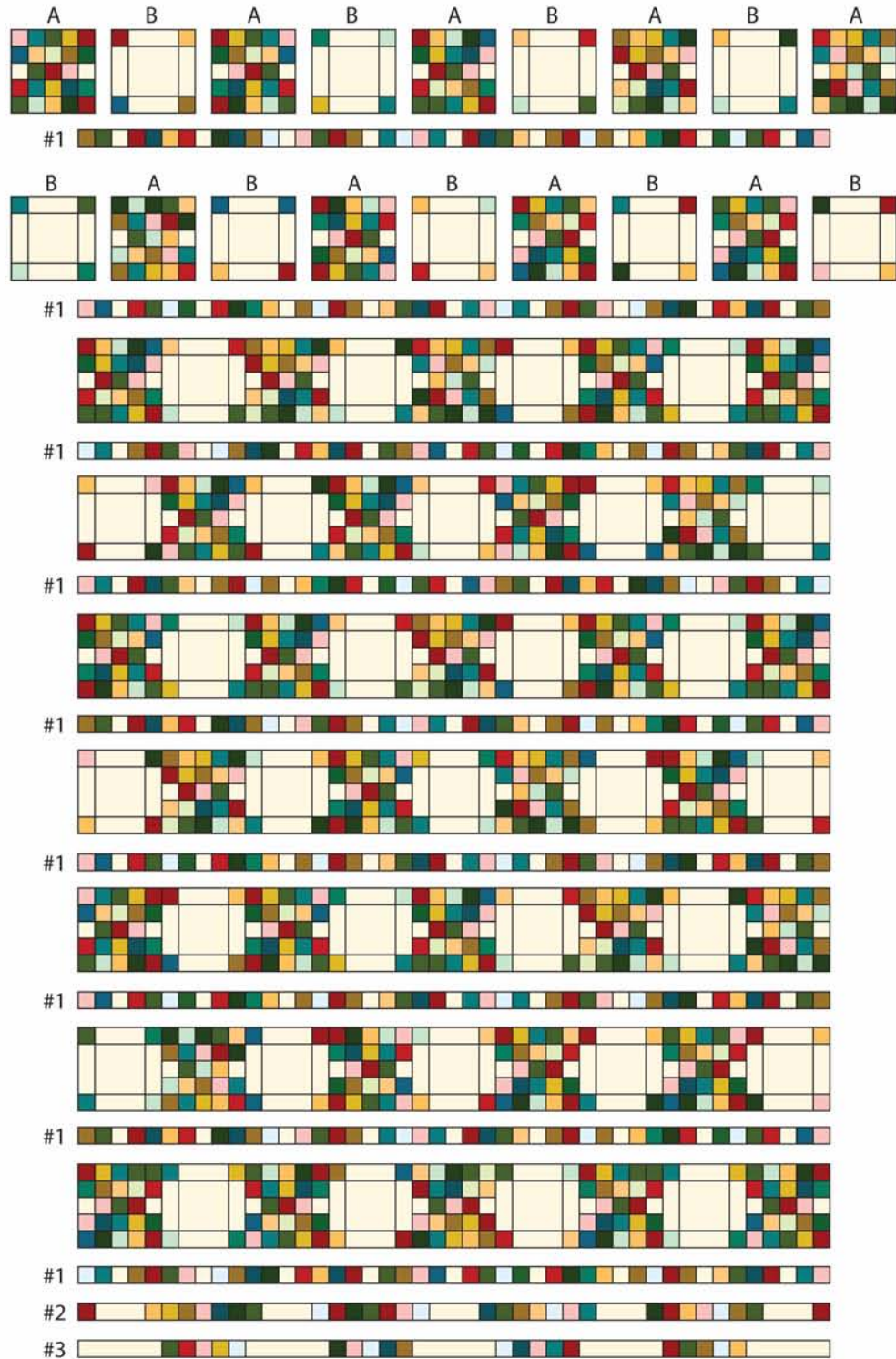


Diagram 7

Finishing:

1. Prepare the backing with 2 vertical seams to measure 98" x 120". Press seams open.
2. Layer and quilt as desired. Bind the quilt using the (11) 2-1/2" x 42" binding strips.

Be sure to visit www.windhamfabrics.com to see the complete collection and to download this and other Free Projects