

The Big Easy

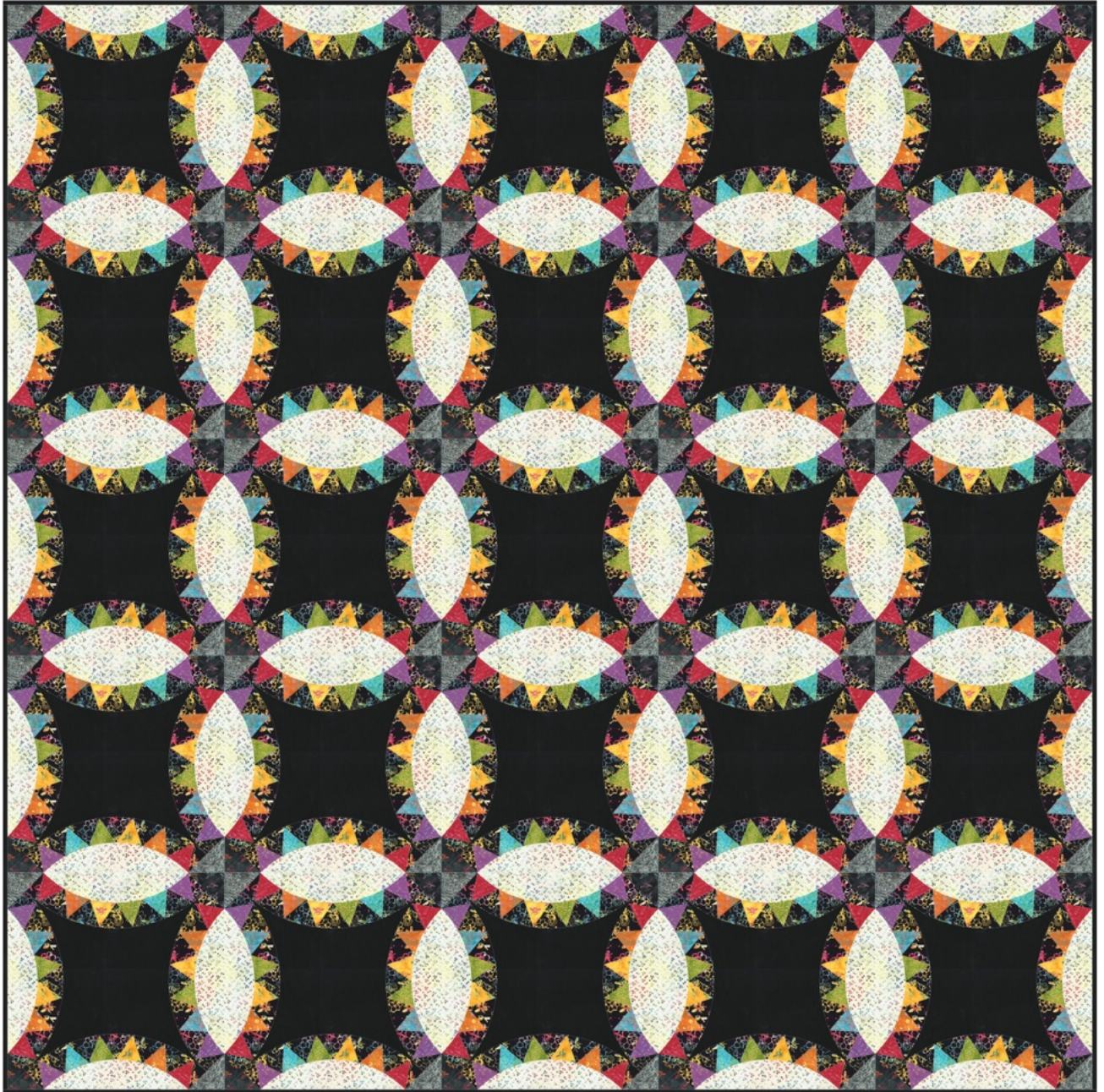
Designed by Christine Stainbrook of Project House 360

Featuring *Boho Blooms* batiks by Laura Heini

SIZE: 90" x 90"

INTERMEDIATE
SKILL LEVEL

FREE BATIK
PROJECT



THIS IS A DIGITAL REPRESENTATION OF THE QUILT TOP, FABRIC MAY VARY.

PLEASE NOTE: BEFORE MAKING YOUR PROJECT, CHECK FOR ANY PATTERN UPDATES AT WINDHAMFABRICS.COM'S FREE PROJECTS SECTION.



The Big Easy

PROJECT DISCLAIMER: Every effort has been made to ensure that all projects are error free. All the information is presented in good faith, however, no warranty can be given nor results guaranteed. Therefore, we assume no responsibility nor damages that may occur when referring to this pattern. When errors are brought to our attention, we make every effort to correct and post a revision as soon as possible. We suggest you check windhamfabrics.com for pattern updates and to test the pattern prior to making the project. Test templates first, before cutting all the pieces. Free projects are not for resale.

WOF = WIDTH OF FABRIC

KEY	FABRIC	SKU	YD	CUTTING INSTRUCTIONS
A		735Q-13	7/8	(8) 3" x WOF. Subcut: (100) 3" squares
B		731Q-6	3	(100) template B
C		730Q-1	7/8	(8) 3" x WOF. Subcut: (100) 3" squares
D		728Q-1	6	(16) 3" x WOF. Subcut: (200) 2" x 3" rectangles (46) 3 1/2" x WOF. Subcut: (500) 3 1/2" squares
E		732Q-8	7/8	(7) 3 1/4" x WOF. Subcut: (100) 2 1/2" x 3 1/4" rectangles
F		733Q-15	7/8	(7) 3 1/4" x WOF. Subcut: (100) 2 1/2" x 3 1/4" rectangles
G		730Q-3	7/8	(7) 3 1/4" x WOF. Subcut: (100) 2 1/2" x 3 1/4" rectangles
H		736Q-11	7/8	(7) 3 1/4" x WOF. Subcut: (100) 2 1/2" x 3 1/4" rectangles
I		735Q-18	7/8	(7) 3 1/4" x WOF. Subcut: (100) 2 1/2" x 3 1/4" rectangles
J		731Q-9	7/8	(7) 3 1/4" x WOF. Subcut: (100) 2 1/2" x 3 1/4" rectangles
K		100Q-1567	6 3/4	(10) 2 1/2" x WOF for binding (25) template A
Backing (#730Q-1)			8 1/4	Batting: 98" x 98"



The Big Easy

1/4" Seam Allowance Check

Even if you use a 1/4" foot, your seam allowance may not be accurate!

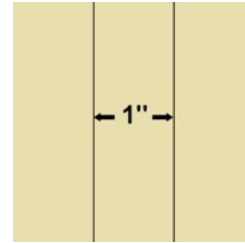
To check if your seam is accurate, cut three 1 1/2" x 3" pieces from scrap fabric.

Sew the pieces together along the 3" side, using what you believe is a 1/4" seam.

Press away from the center piece.

Measure.

The center piece should be exactly 1" wide.



If, when you measure, the center is less than 1", your seam allowance is too large.

If it's more than 1", your seam allowance is too small.

Refer to your machine owner's manual for instructions on changing your needle position.

Repeat the test until your center strip measures exactly 1".

Foundations:

Make 100

1. Make 100 copies of each foundation paper piecing unit.
2. Use foundation paper piecing to create the units. Trim foundations along cutting lines.

Unit A:

- A1 = fabric A 3" square
- A2 = fabric D 2" x 3" rectangle
- A3 = fabric E 3 1/4" x 2 1/2" rectangle
- A4 = fabric D 3 1/2" square
- A5 = fabric F 3 1/4" x 2 1/2" rectangle

Unit B:

- B1 = fabric I 3 1/4" X 2 1/2" rectangle
- B2 = fabric D 3 1/2" square
- B3 = fabric J 3 1/4" x 2 1/2" rectangle
- B4 = fabric D 2" x 3" rectangle
- B5 = fabric C 3" square

Unit C:

- C1 = fabric D 3 1/2" square
- C2 = fabric G 3 1/4" x 2 1/2" rectangle
- C3 = fabric D 3 1/2" square
- C4 = fabric H 3 1/4" x 2 1/2" rectangle
- C5 = fabric D 3 1/2" square





The Big Easy

3. Stitch foundations together to create arcs. Remove paper. Make 100 arcs.



Blocks:

Make 25

4. Use curved piecing to stitch one fabric B template B piece to each arc.

5. Use curved piecing to stitch four arc units to one fabric K template A. Square to 18½". Make 25 blocks.



Assembly:

6. Use the assembly diagram on page 4 to stitch the blocks together.

Finishing:

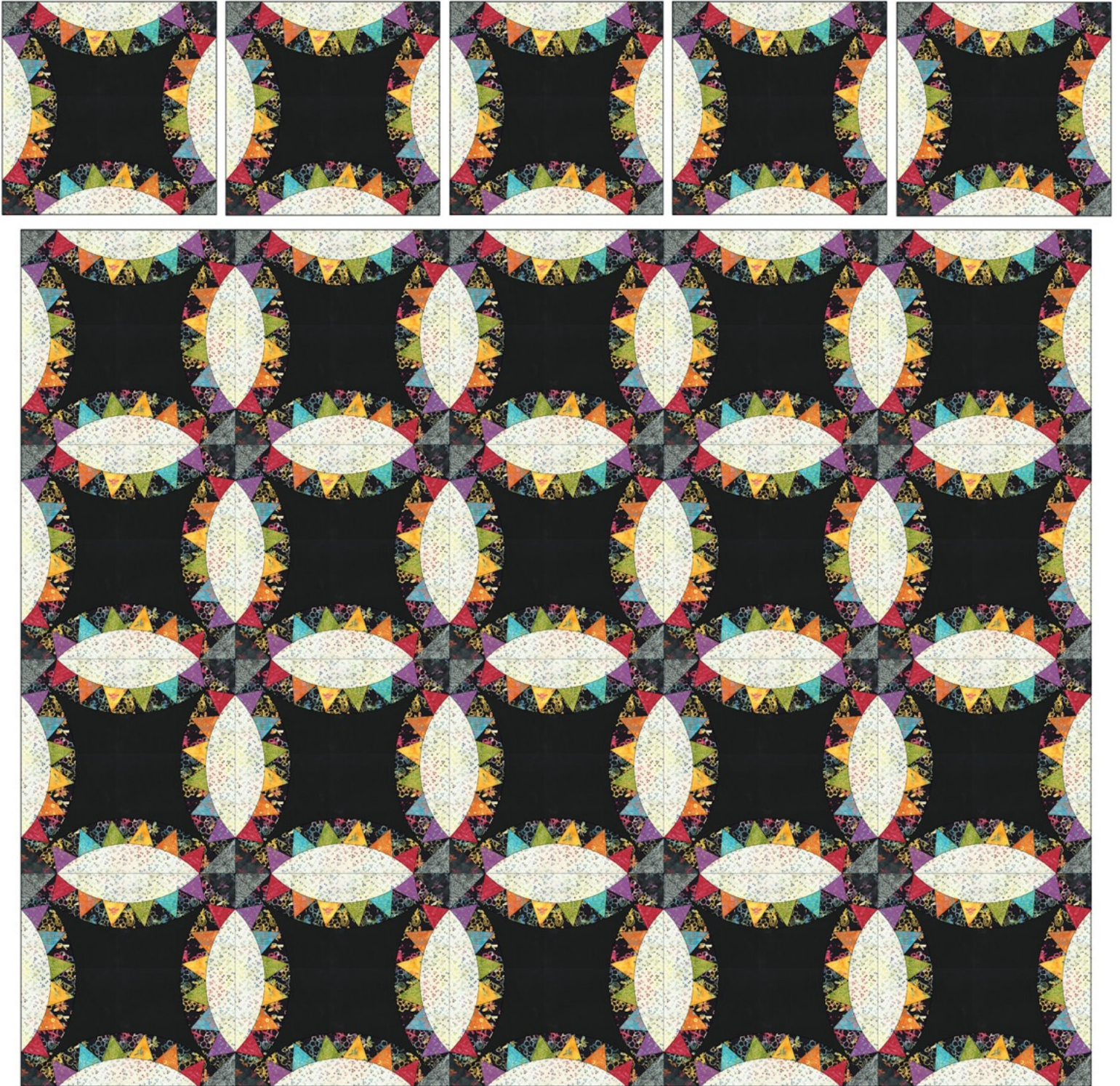
7. Layer, baste and quilt as desired.

8. Bind with ten fabric K 2½" x WOF strips.



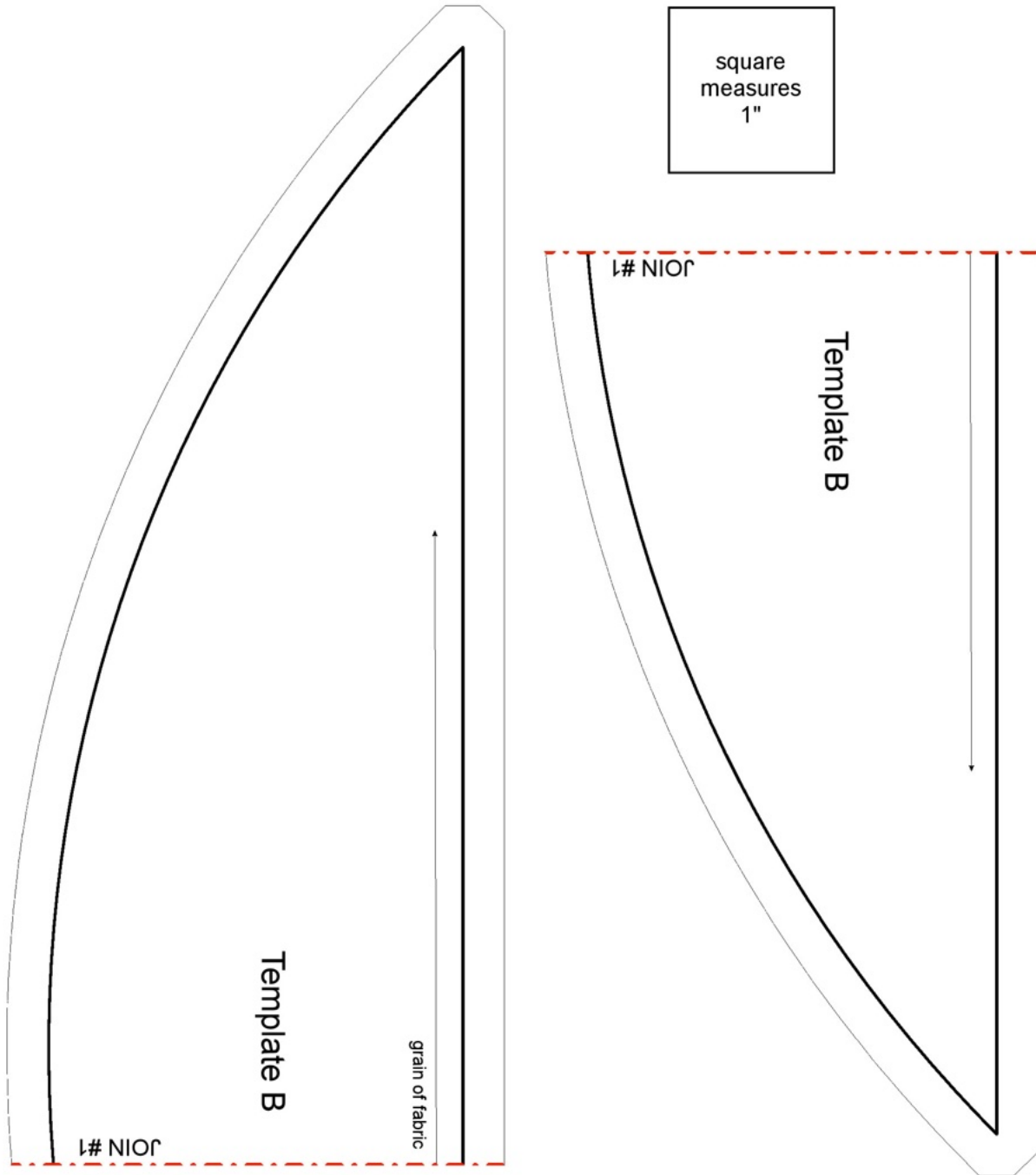
The Big Easy

Assembly Diagram



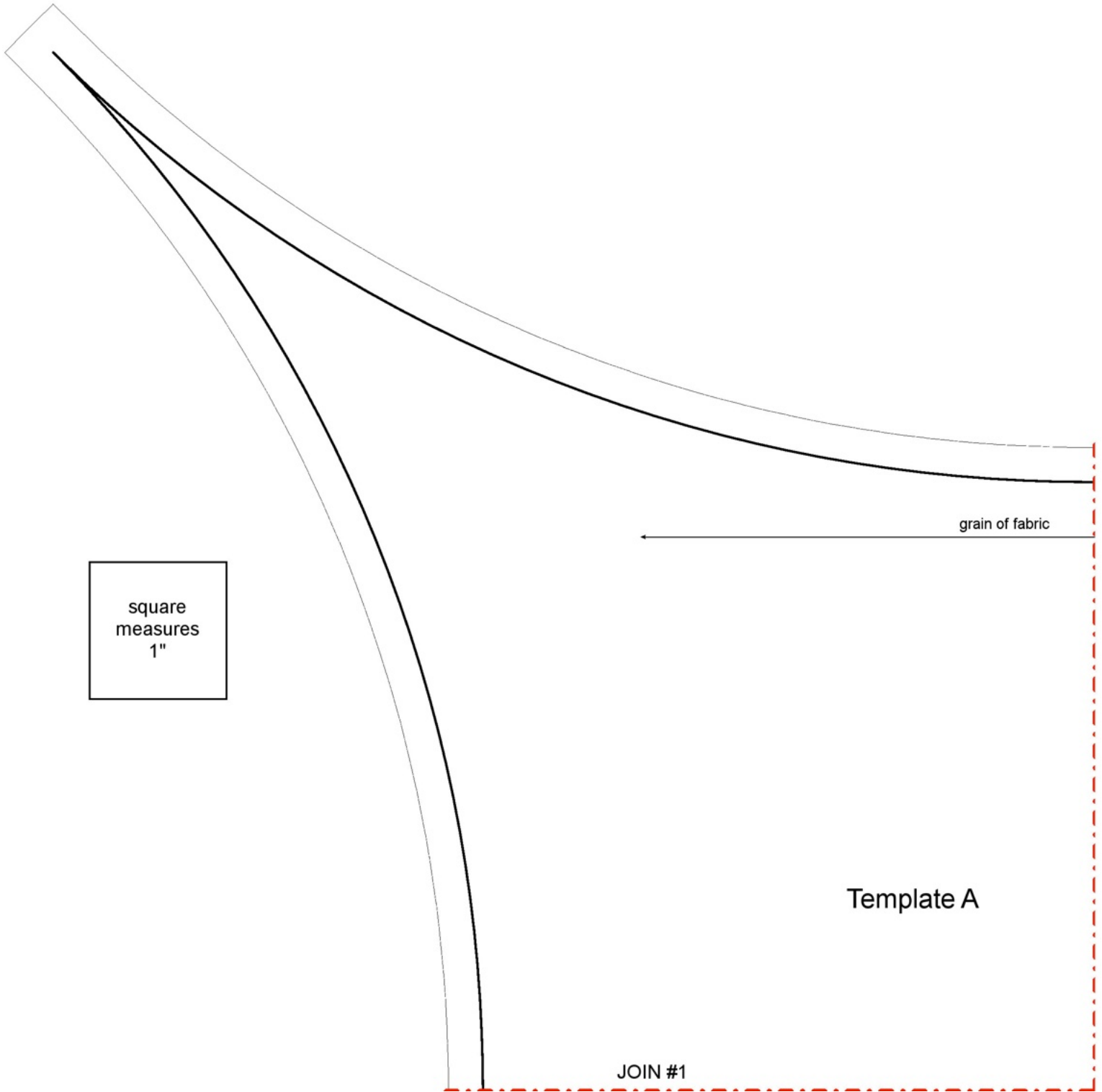


The Big Easy



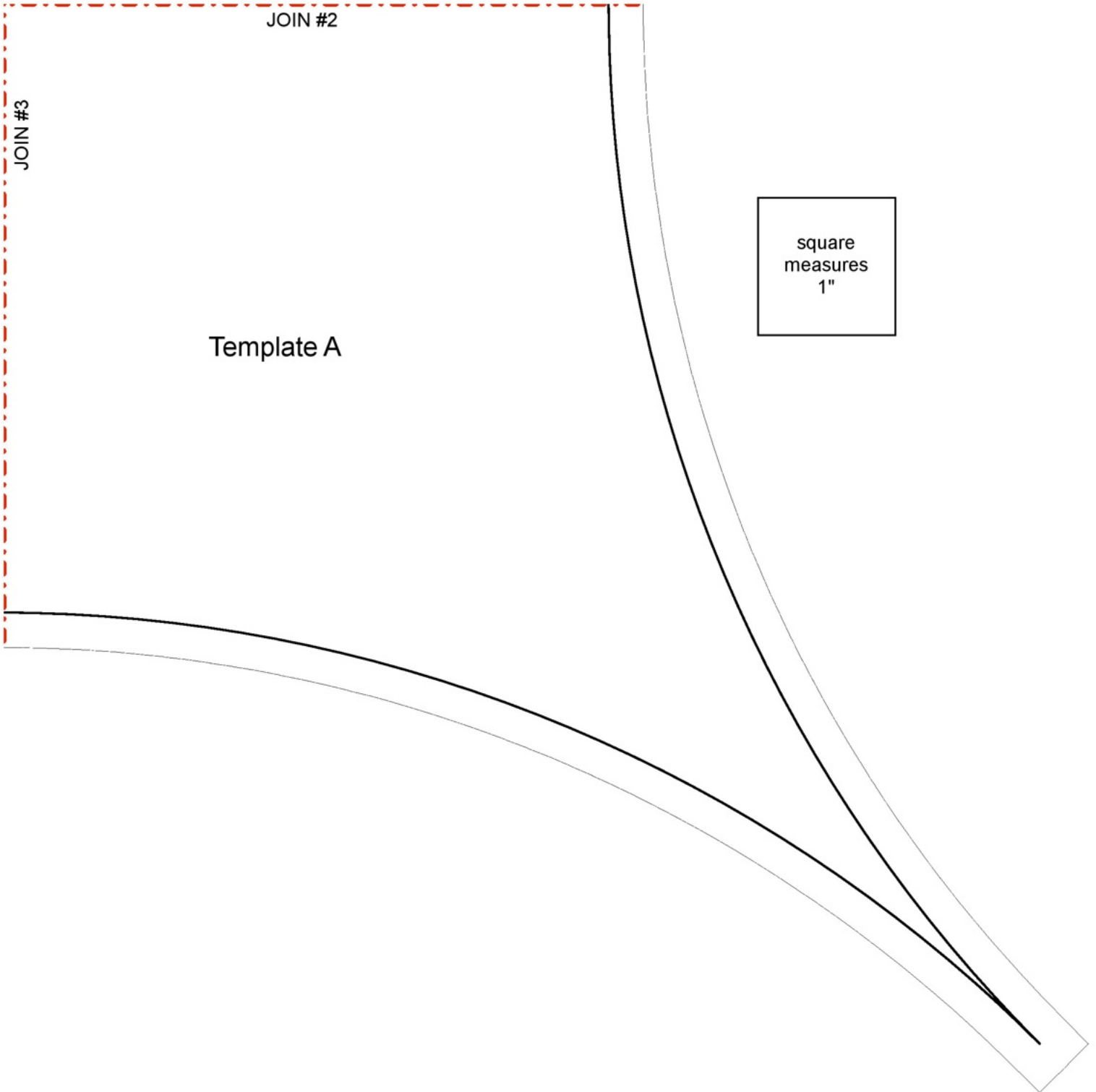


The Big Easy





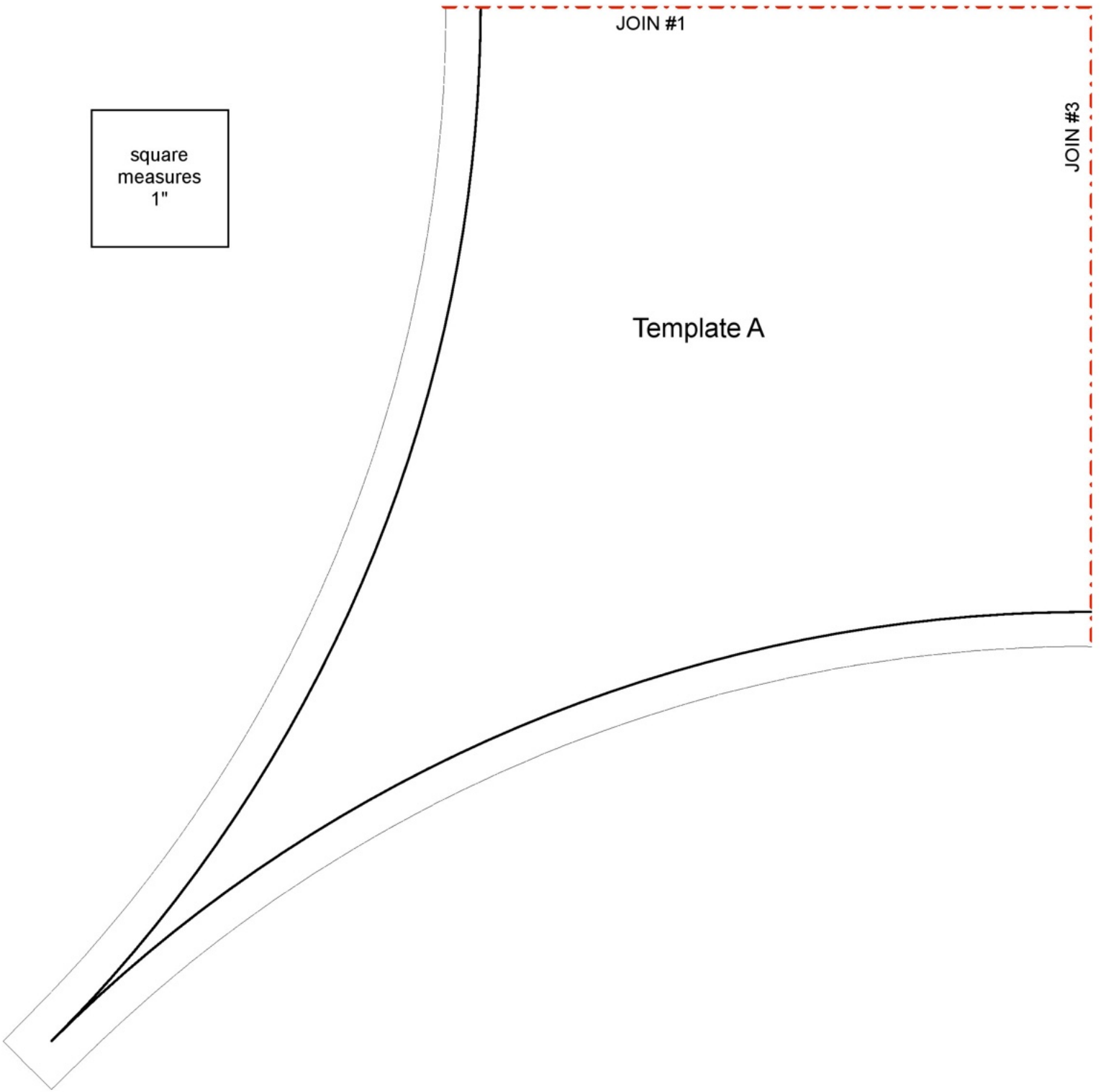
The Big Easy





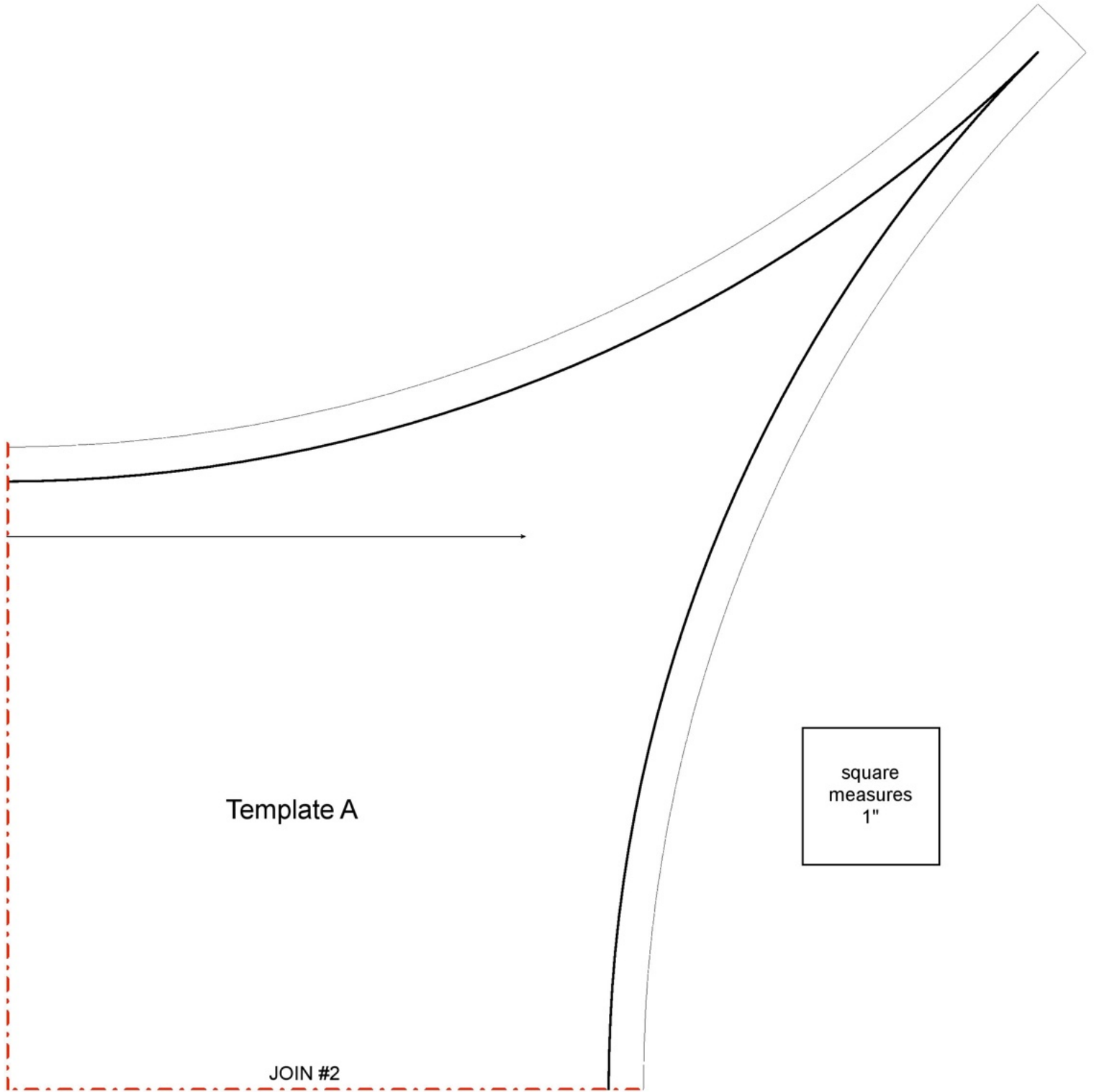
The Big Easy

square
measures
1"





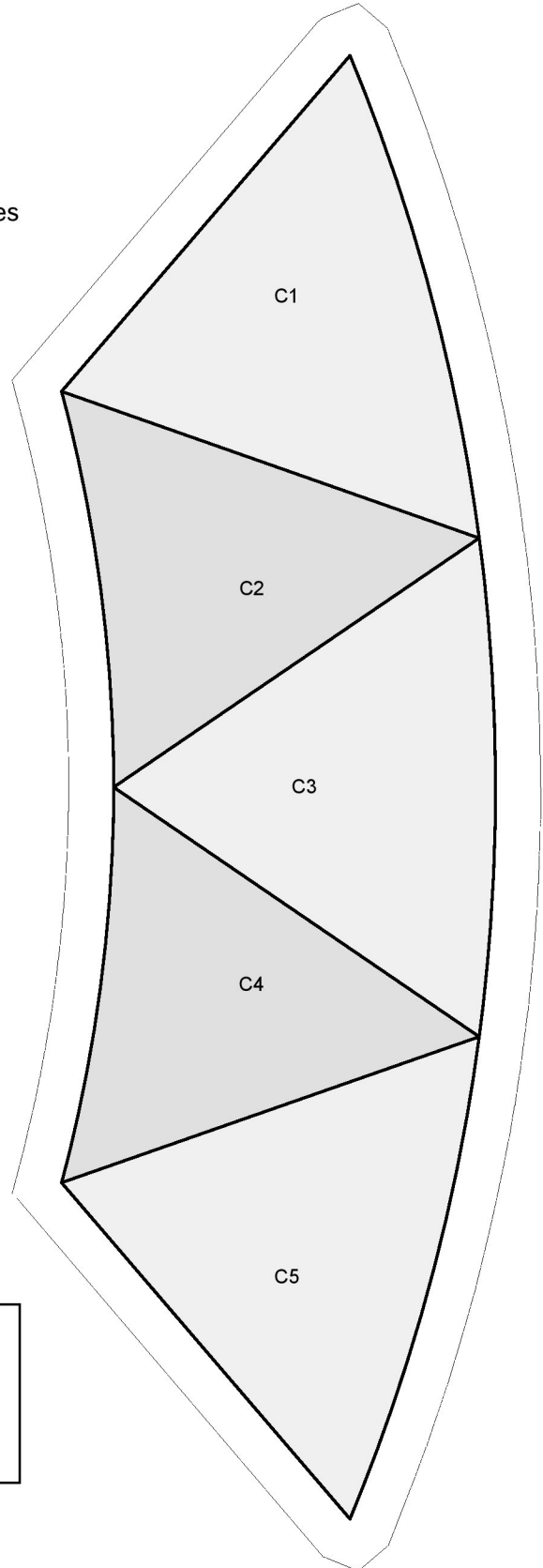
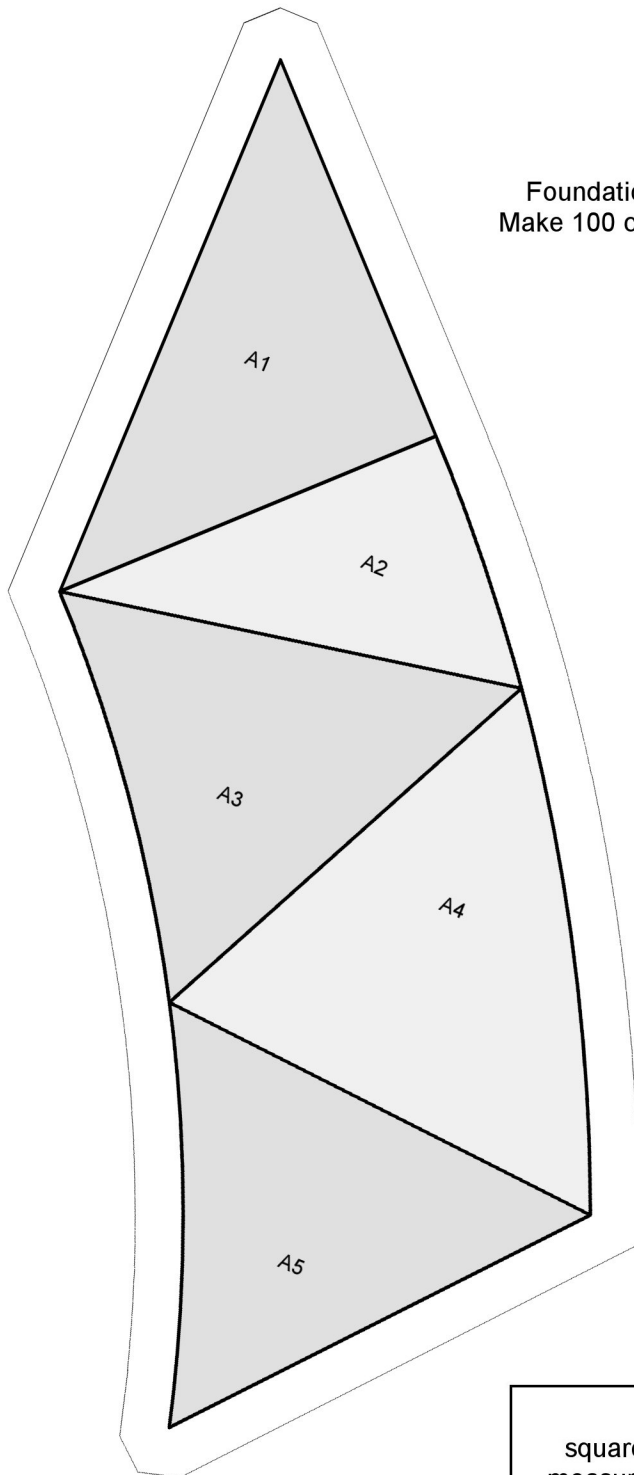
The Big Easy





The Big Easy

Foundations
Make 100 copies



square
measures
1"



The Big Easy

Foundations
Make 100 copies

square
measures
1"

