

Spring Meadow

designed by Marsha Evans Moore
featuring *Fanfare* by Whistler Studios

SIZE: 60-1/4" x 81"

INTERMEDIATE
SKILL



THIS IS A DIGITAL REPRESENTATION OF THE QUILT TOP, FABRIC MAY VARY.

FREE
PROJECT

PLEASE NOTE: BEFORE MAKING YOUR PROJECT, CHECK FOR ANY PATTERN UPDATES AT WINDHAMFABRICS.COM'S FREE PROJECTS SECTION.



Spring Meadow




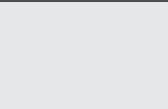
PROJECT DISCLAIMER: Every effort has been made to ensure that all projects are error free. All the information is presented in good faith, however, no warranty can be given nor results guaranteed. Therefore, we assume no responsibility nor damages that may occur when referring to this pattern. When errors are brought to our attention, we make every effort to correct and post a revision as soon as possible. We suggest you check windhamfabrics.com for pattern updates and to test the pattern prior to making the project. Test templates first, before cutting all the pieces. Free projects are not for resale.

LOF=LENGTH OF FABRIC WOF=WIDTH OF FABRIC

KEY	FABRIC	SKU	YD	CUTTING INSTRUCTIONS
A		54374-1 Yellow	1	(6) 5" x WOF strips; sew short ends together. Subcut (2) 5" x 64-1/2" and (2) 5" x 53-1/4" borders.
B		54374-2 Jade	3/4	(7) 3" x WOF strips; sew ends together. Subcut (2) 3" x 76-1/2" borders and (2) 3" x 60-3/4" borders.
C		54375-2 Jade	5/8	(6) 3" x LOF strips centered over double green stripe; sew short ends together. Subcut (2) 3" x 62" strips.
D		54376-1 Yellow	1/2	(6) 1-3/4" x WOF strips; sew short ends together. Subcut (4) 1-3/4" x 62" strips.
E		54376-2 Jade	1/2	(5) 2" x WOF strips; subcut (54) Diamond Templates.
F		454376-4 Grey	1-3/8	(3) 11-3/4" x WOF strips; subcut (8) 11-3/4 squares. Cut 11-3/4" squares in half diagonally twice to make (32) 11-3/4" triangles (use 30). (1) 6" x WOF strip; subcut (6) 6" squares. Cut 6" squares in half diagonally once to make (12) 6" triangles.
G		54377-2 Jade	3/8	(5) 1-3/4" x WOF strips; sew short ends together. Subcut (2) 1-3/4" x 62" and (2) 1-3/4" x 43-3/4" borders.
H		54378-4 Grey	1/2	(7) 1-3/4" x WOF strips; sew short ends together. Subcut (2) 1-3/4" x 74" and (2) 1-3/4" x 55-3/4" borders.
I		54379-1 Yellow	1/2	(5) 2" x WOF strips; subcut (54) Diamond Templates.



Spring Meadow

KEY	FABRIC	SKU	YD	CUTTING INSTRUCTIONS
J		54379-5 Emerald	3/8	For raw edge appliqué: (9) Stem Templates. For turned edge appliqué: (9) 1-1/4" x 7" bias strips. (18) Leaf Templates.
K		54379-6 Charcoal	1	For raw edge appliqué: (9) Stem Templates. For turned edge appliqué: (9) 1-1/4" x 7" bias strips. (18) Leaf Templates. FOR BINDING: (8) 2-1/4" x WOF strips, sew short ends together.
L		RUBY + BEE SOLIDS 51583-55 Wisp	1-1/8	(2) 4-1/8" x WOF strips; subcut (18) 4-1/8" squares. (4) 2-5/8" x WOF strips; subcut (54) 2-5/8" squares. (2) 3" x WOF strips; subcut (18) 3" squares. Cut squares in half once to make (36) triangles. (2) 2-3/8" x WOF strips; subcut (18) 2-3/8" squares. Cut squares in half once to make (36) triangles.
		Backing	5	69" x 89" batting.

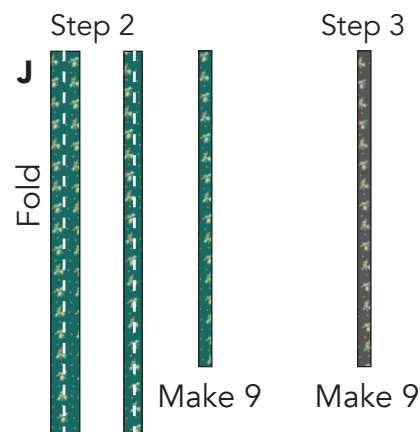
Optional: For turned under edge appliqué: freezer paper or other template paper.
For raw edge appliqué: paper backed fusible webbing.

BLOCK ASSEMBLY

1. Using your favorite appliqué method, prepare the appliqué pieces. Prepare raw edge appliqué stems in the same way as other pieces. Set aside leaf appliqués.

2. For turned edge appliqué stems, fold (1) **J** 1-1/4" x 7" strip in half lengthwise with wrong sides together. Sew 1/4" from fold. Trim raw edge 1/8" from stitching. Press stem flat with seam centered on one side. Make 9.

3. Following Step 2, make turned edge appliqué stems using **K** 1-1/4" x 7" strips. Make 9.

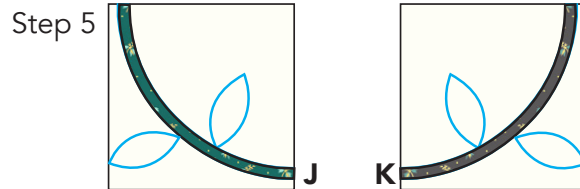
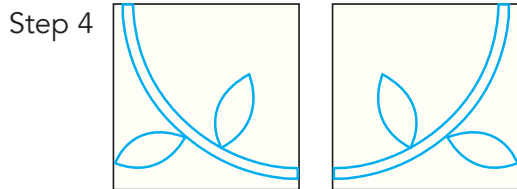




Spring Meadow

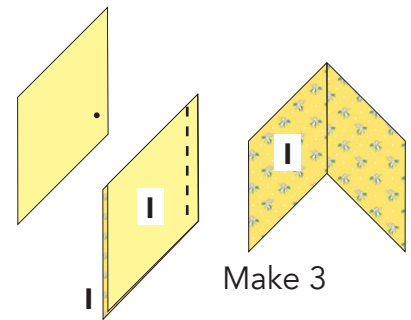
4. Trace appliqué pattern to (9) **L** 4-1/8" squares. Reverse appliqué pattern and trace to (9) **L** 4-1/8" squares.

5. Pin, baste or fuse stem **J** stems along curved line on (1) **L** 4-1/8" square. Sew in place along the edges. Pin, baste or fuse stem **K** stems along curved line on (1) **I** 4-1/8" reversed square. Sew in place along the edges. Make 9 each.



Note: Measure and mark the end of the seamline at the side corner on the wrong side, if necessary, to ensure accuracy when sewing the diamonds together.

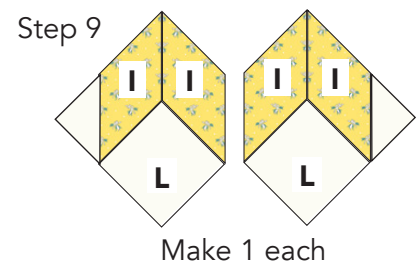
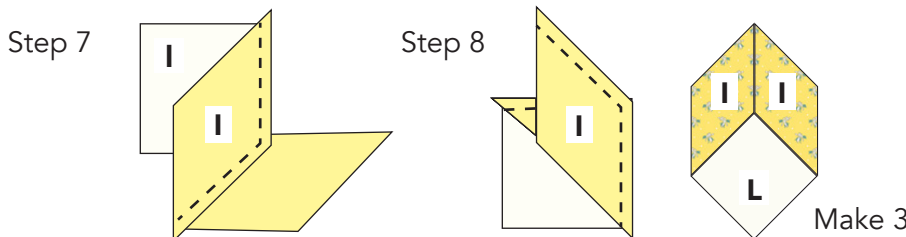
6. Sew (2) **I** diamonds together beginning at the center point and ending at the side corner of the seam line to make a diamond pair. Make 3.



7. Sew (1) **I** diamond of the diamond pair to (1) **L** 2-5/8" square and ending at the corners of the seam line.

8. Sew second **I** diamond to adjacent side of **L** 2-5/8" square beginning at the side corner of the seam line to make a diamond pair unit. Make 3.

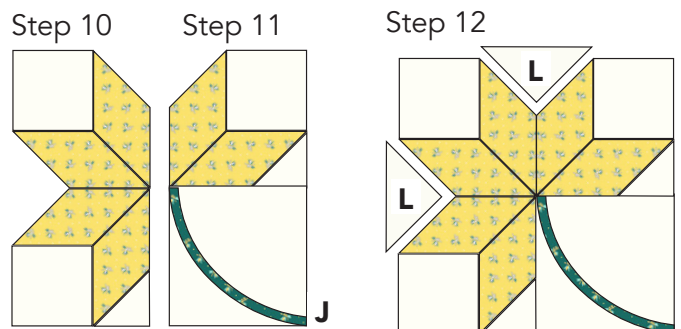
9. Sew (1) **I** 2-3/8" triangle to the sides of (2) diamond pair units. Make 1 each.



10. Sew together (1) diamond pair and (1) diamond pair with triangle ending at the side corner of the seam line to make (1) half block.

11. Sew together (1) remaining diamond pair with triangle and (1) **L** 4-1/8" square with stem to make (1) half block.

12. Sew the half blocks together beginning at the top corner of the seam line. Sew (2) **L** 3" triangles between the points of the diamonds to complete the square.

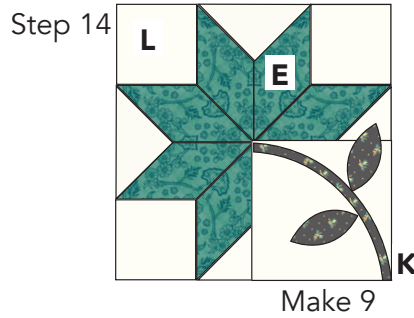
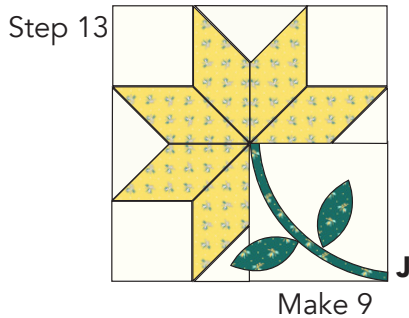




Spring Meadow

13. Pin, baste or fuse (2) **J** leaf appliques in place on the block. Sew along the edges of the leaves. Block should measure 7-3/4" square including seam allowance. Make 9.

14. Following steps 6-13, make blocks using the fabrics shown. Make 9.



BLOCK ROWS

15. Arrange (3) **I** blocks alternating with (3) **E** blocks in a vertical row. Sew (1) **F** 6" triangle and (1) **F** 11-3/4" triangle to the top and bottom blocks. Sew (2) **F** 11-3/4" triangles to the remaining blocks. Note orientation of **F** triangles. Make 2.

16. Sew the triangle/block units together matching seams to make a vertical block row. Block row should measure 10-3/4" x 62" including seam allowance. Make 2.

17. Following the Quilt Layout on page 5, make block row 2 in the same way.

QUILT ASSEMBLY

18. Following the Quilt Layout on page 5, sew (2) **D** 1-3/4" x 62" strips to sides of (1) **C** 3" x 62" strips to make the sashing rows. Make 2.

19. Sew (3) block rows alternating with 2 sashing rows to make the quilt center.

20. Sew (1) **G** 1-3/4" x 62" borders to each side of the quilt. Sew (2) **G** 1-3/4" x 43-3/4" borders to top and bottom of the quilt.

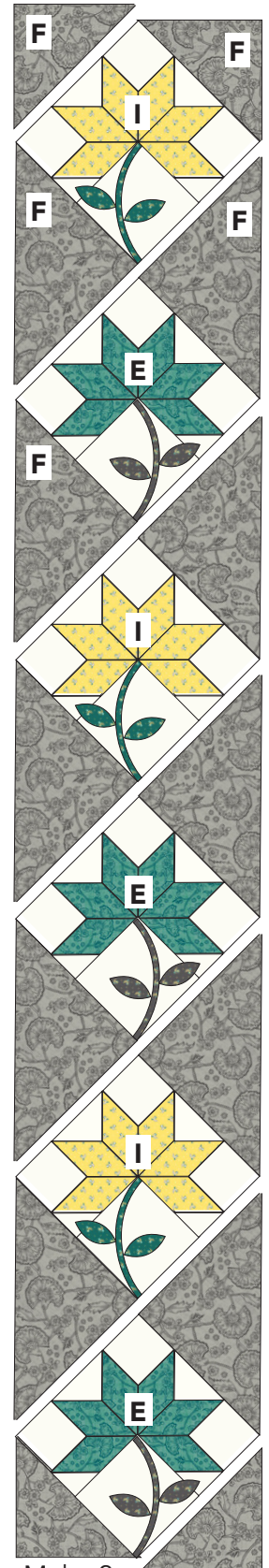
21. Sew (1) **A** 5-1/4" x 64-1/2" border to each side of the quilt. Sew (2) **A** 5-1/4" x 53-1/4" borders to top and bottom of the quilt.

22. Sew (1) **H** 1-3/4" x 74" border to each side of the quilt. Sew (2) **H** 1-3/4" x 55-3/4" borders to top and bottom of the quilt.

23. Sew (1) **B** 3" x 76-1/2" borders to each side of the quilt. Sew (2) **B** 3" x 60-3/4" borders to top and bottom of the quilt.

FINISHING: Layer quilt top, batting and backing together to form quilt sandwich. Baste and quilt as desired. Bind using **K** 2-1/4" strips.

Block Rows 1 and 3

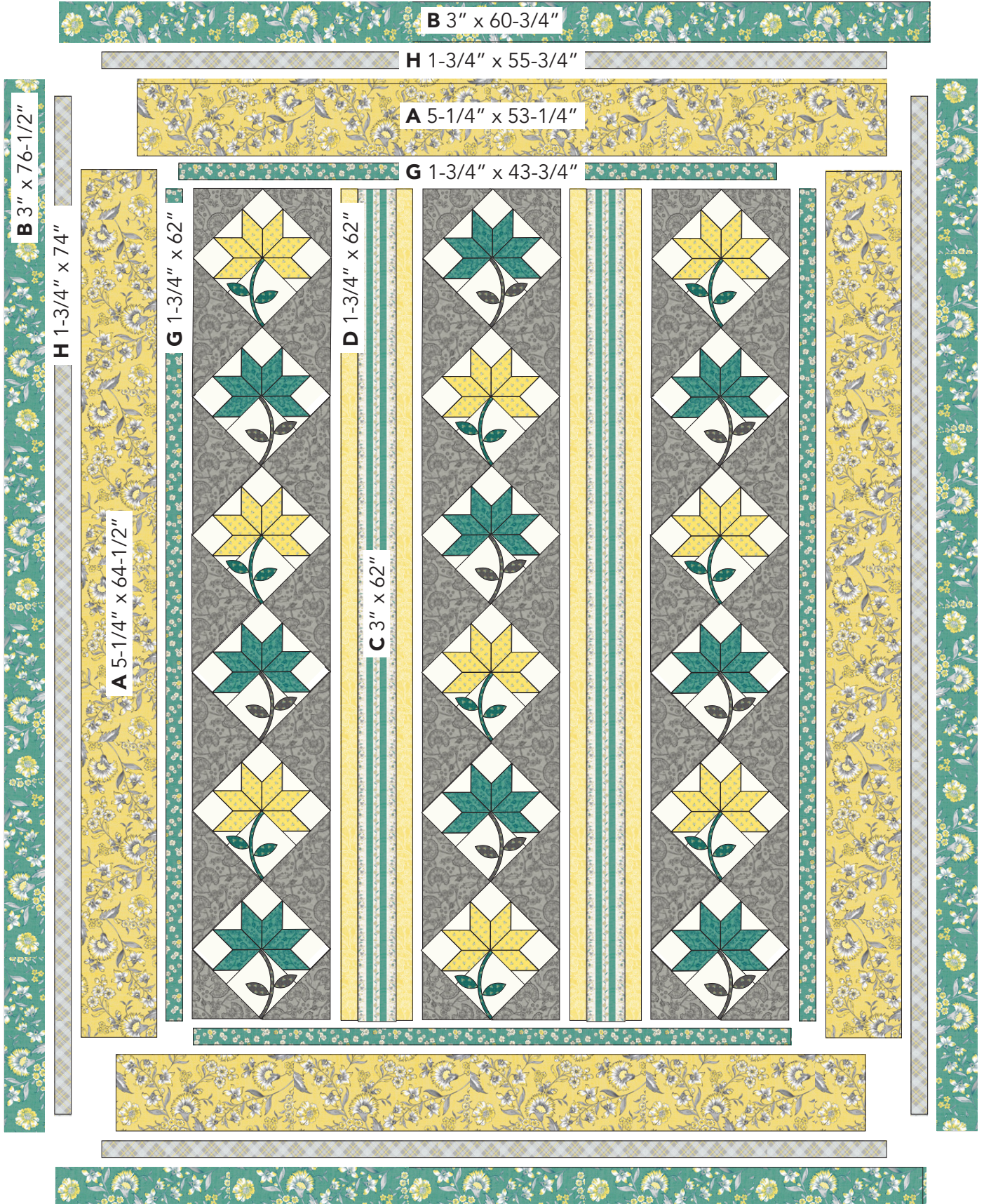


Make 2



Spring Meadow

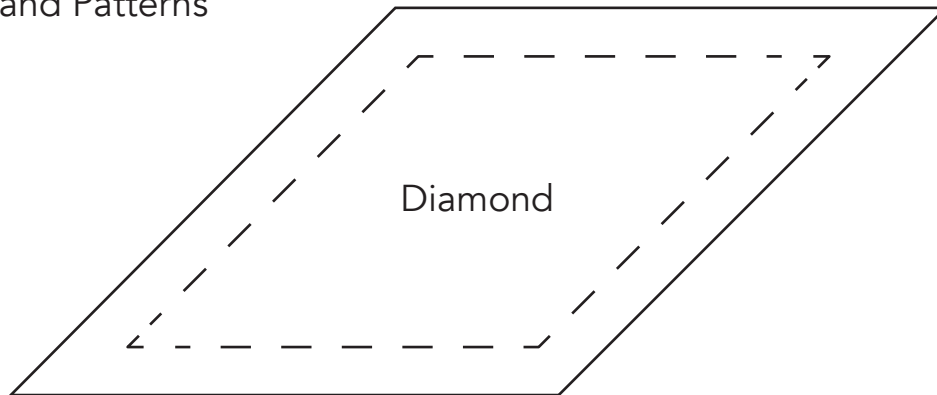
QUILT LAYOUT





Spring Meadow

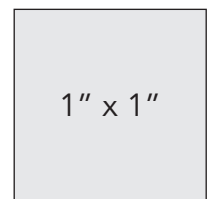
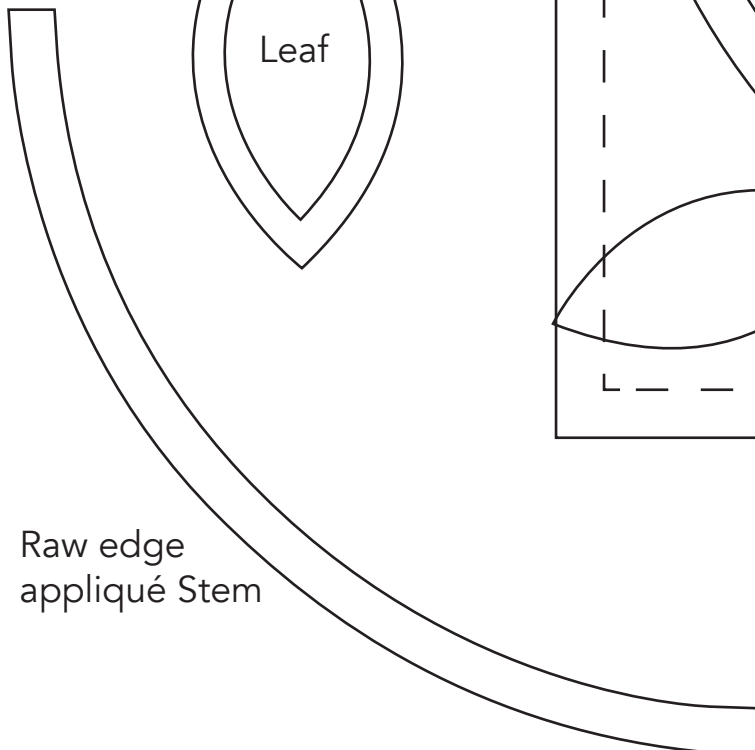
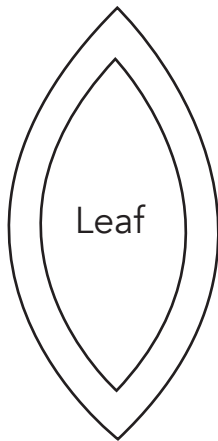
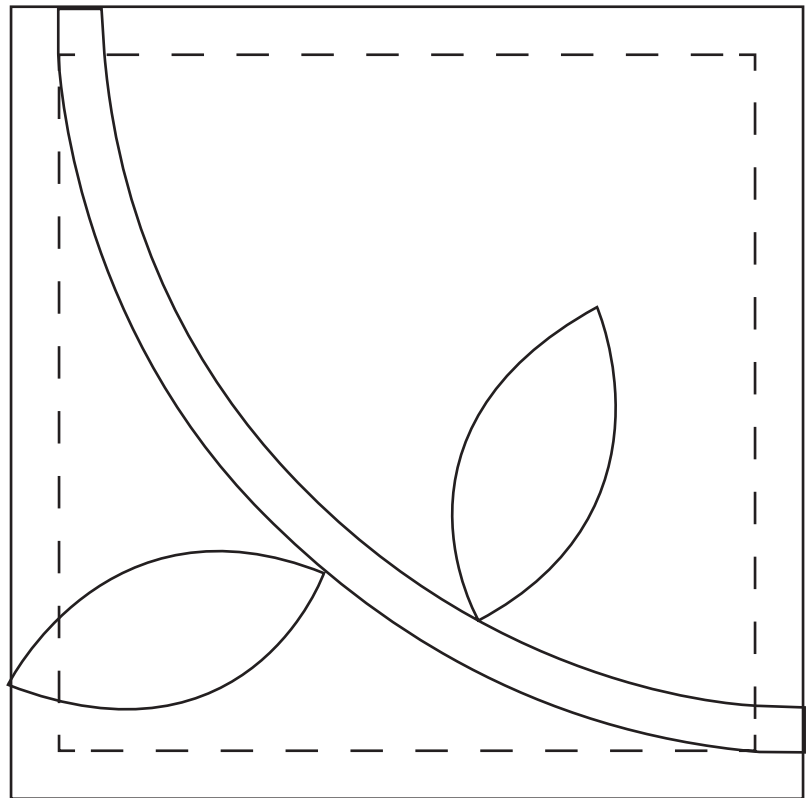
Templates and Patterns



Appliqué Pattern

Cut along the outer solid line for turned edge appliqué.

Cut along the inner solid line for raw edge appliqué.



Print at 100%.