

Uppercase - Spines

Designed by Janine Vangool
Featuring the Uppercase Collection by Janine Vangool
Size: 68" x 84"



Check www.windhamfabrics.com Free Project section to see if there are any pattern updates before you start your quilt project



812 Jersey Ave – Jersey City, NJ 07310 – 201.659.0444 ~ FAX: 201.659.9719
www.windhamfabrics.com email: retail@windhamfabrics.com

Uppercase - Spines

Page 2

Estimated Fabric Requirements:

¼ yard – 41827-3 Grey

⅓ yard – 41825-3 Grey

⅓ yard – 41824-4 Pink

⅓ yard – 41825-2 Orange

⅓ yard – 41821-4 Pink

¼ yard – 41826-4 Pink

½ yard – 41826-3 Grey

⅓ yard – 41823-3 Grey

1 yard – 41823M-6 Silver

¾ yard – 41822-3 Grey

⅓ yard – 41827M-6 Silver

⅓ yard – 41822-1 Turquoise

¼ yard – 41820-1 Turquoise

¼ yard – 41824-7 Lime

⅓ yard – 41825-1 Turquoise

⅓ yard – 41826-1 Turquoise

⅓ yard – 41827-5 Black

¼ yard – 41825-4 Pink

¼ yard – 41821-2 Orange

¼ yard – 41824-2 Orange

¼ yard – 41820-2 Orange

⅓ yard – 41823-2 Orange

¼ yard – 41822-2 Orange

¼ yard – 41824-1 Turquoise

¼ yard – 41823-1 Turquoise

¼ yard – 41821-1 Turquoise

¼ yard – 41827-8 White

¼ yard – 41823-5 Black

⅔ yard – 41820-3 Grey

5 ¼ yards – 41659-4 White



41827-3 Grey



41825-3 Grey



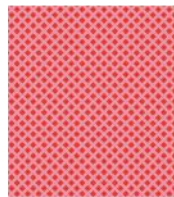
41824-4 Pink



41825-2 Orange



41821-4 Pink



41826-4 Pink



41826-3 Grey



41823-3 Grey



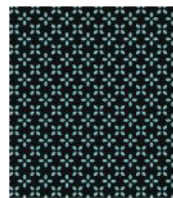
41823M-6 Silver



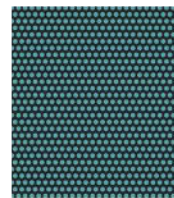
41822-3 Grey



41827M-6 Silver



41822-1 Turquoise



41820-1 Turquoise



41824-7 Lime



41825-1 Turquoise



41826-1 Turquoise



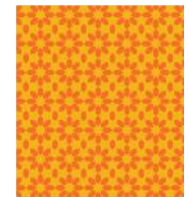
41827-5 Black



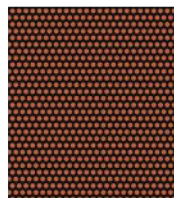
41825-4 Pink



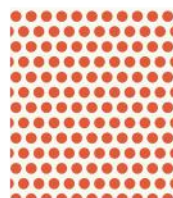
41821-2 Orange



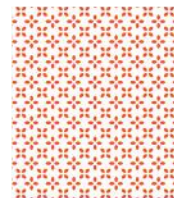
41824-2 Orange



41820-2 Orange



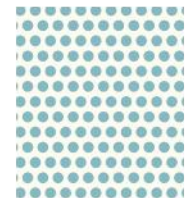
41823-2 Orange



41822-2 Orange



41824-1 Turquoise



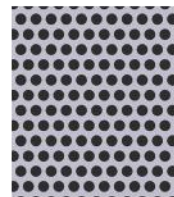
41823-1 Turquoise



41821-1 Turquoise



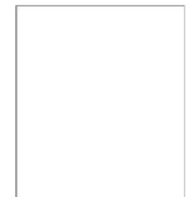
41827-8 White



41823-5 Black



41820-3 Grey



41659-4 White



WINDHAM FABRICS

www.windhamfabrics.com

Uppercase - Spines

Page 3

Cutting Instructions:

Fabric 1: Letters – Grey

- Cut one 4 ½" x WOF strip. Sub-cut the strip into six 4 ½" squares.

Fabric 2: Zig Zag – Grey

- Cut two 4 ½" x WOF strips. Sub-cut the strips into eleven 4 ½" squares.

Fabric 3: Star Flower – Pink

- Cut two 4 ½" x WOF strips. Sub-cut the strips into twelve 4 ½" squares.

Fabric 4: Zig Zag – Orange

- Cut two 4 ½" x WOF strips. Sub-cut the strips into twelve 4 ½" squares.

Fabric 5: Loops – Pink

- Cut two 4 ½" x WOF strips. Sub-cut the strips into thirteen 4 ½" squares.

Fabric 6: Lattice – Pink

- Cut one 4 ½" x WOF strip. Sub-cut the strip into seven 4 ½" squares.

Fabric 7: Lattice – Grey

- Cut three 4 ½" x WOF strips. Sub-cut the strips into twenty-three 4 ½" squares.

Fabric 8: Large Dots – Grey

- Cut two 4 ½" x WOF strips. Sub-cut the strips into seventeen 4 ½" squares.

Fabric 9: Large Dots – Silver

- Cut seven 4 ½" x WOF strips. Sub-cut the strips into fifty-nine 4 ½" squares.

Fabric 10: Petals – Grey

- Cut five 4 ½" x WOF strips. Sub-cut the strips into forty-three 4 ½" squares.

Fabric 11: Letters – Silver

- Cut two 4 ½" x WOF strips. Sub-cut the strips into eighteen 4 ½" squares.

Fabric 12: Petals – Turquoise

- Cut two 4 ½" x WOF strips. Sub-cut the strips into twelve 4 ½" squares.

Fabric 13: Small Dots – Turquoise

- Cut one 4 ½" x WOF strip. Sub-cut the strip into seven 4 ½" squares.

Fabric 14: Star Flower – Lime

- Cut one 4 ½" x WOF strip. Sub-cut the strip into nine 4 ½" squares.

Fabric 15: Zig Zag – Turquoise

- Cut two 4 ½" x WOF strips. Sub-cut the strips into fourteen 4 ½" squares.



WINDHAM FABRICS

www.windhamfabrics.com

Uppercase - Spines

Page 4

Cutting Instructions - Continued:

Fabric 16: Lattice – Turquoise

- Cut two 4 ½" x WOF strips. Sub-cut the strips into thirteen 4 ½" squares.

Fabric 17: Letters – Black

- Cut two 4 ½" x WOF strips. Sub-cut the strips into ten 4 ½" squares.

Fabric 18: Zig Zag – Pink

- Cut one 4 ½" x WOF strip. Sub-cut the strip into seven 4 ½" squares.

Fabric 19: Loops – Orange

- Cut one 4 ½" x WOF strip. Sub-cut the strip into eight 4 ½" squares.

Fabric 20: Star Flower – Orange

- Cut one 4 ½" x WOF strip. Sub-cut the strip into nine 4 ½" squares.

Fabric 21: Small Dots – Orange

- Cut one 4 ½" x WOF strip. Sub-cut the strip into nine 4 ½" squares.

Fabric 22: Large Dots – Orange

- Cut two 4 ½" x WOF strips. Sub-cut the strips into eleven 4 ½" squares.

Fabric 23: Petals – Orange

- Cut one 4 ½" x WOF strip. Sub-cut the strip into five 4 ½" squares.

Fabric 24: Star Flower – Turquoise

- Cut one 4 ½" x WOF strip. Sub-cut the strip into five 4 ½" squares.

Fabric 25: Large Dots – Turquoise

- Cut one 4 ½" x WOF strip. Sub-cut the strip into three 4 ½" squares.

Fabric 26: Loops – Turquoise

- Cut one 4 ½" x WOF strip. Sub-cut the strip into four 4 ½" squares.

Fabric 27: Letters – White

- Cut one 4 ½" x WOF strip. Sub-cut the strip into five 4 ½" squares.

Fabric 28: Large Dots – Black

- Cut one 4 ½" x WOF strip. Sub-cut the strip into five 4 ½" squares.

Fabric 29: Small Dots – Grey

- Cut eight 2 ½" x WOF strips for the binding.

Backing: Fish – White

- Cut two 92" x WOF strips. Sew the strips together and trim to 76" x 92" for the pieced back.

Uppercase - Spines

Page 5

Quilt Assembly – Refer to the Quilt Layout while assembling the quilt top:

1. Sew seventeen assorted 4 ½" squares together to make one row. Repeat to make twenty-one rows.
2. Sew the twenty-one rows together to make the quilt top.
3. Layer and quilt as desired.
4. Sew the eight 2 ½" x WOF Fabric 29 strips together, end to end with 45-degree seams, to make the binding. Fold this long strip in half, lengthwise with wrong sides together, and press.
5. Bind as desired.



WINDHAM FABRICS

www.windhamfabrics.com

Uppercase - Spines

Page 6

1	2	2	2	2	3	3	3	4	3	4	4	4	3	5	3	6
7	7	8	7	7	9	9	10	10	11	9	9	10	11	9	11	9
12	12	12	13	12	14	14	14	15	15	16	14	16	15	14	16	15
7	8	8	8	8	9	9	9	11	10	9	10	10	11	9	9	9
1	17	1	1	1	4	3	5	6	6	3	6	4	4	4	6	3
8	7	7	7	7	10	10	9	10	11	9	9	10	11	10	9	9
17	17	17	1	17	18	18	19	19	19	20	20	20	18	18	20	19
8	8	7	8	8	9	9	10	11	10	9	10	10	11	9	9	9
17	21	21	21	21	5	5	5	22	22	22	5	22	22	5	23	23
7	8	7	7	7	9	9	10	10	10	9	9	10	11	10	9	9
13	13	13	13	2	24	25	26	24	25	24	24	26	24	26	26	25
27	28	27	27	27	10	10	10	11	10	9	10	10	11	9	9	9
12	12	12	13	12	16	16	15	14	16	16	14	15	15	15	16	14
7	7	8	7	7	9	9	10	10	11	9	9	10	9	9	9	9
17	2	2	2	2	4	4	3	4	3	5	5	4	3	5	6	6
28	28	28	27	28	9	9	10	11	10	9	10	10	11	9	9	9
21	2	17	17	17	19	19	18	19	20	20	20	19	18	20	20	18
7	8	8	8	8	9	9	10	11	10	10	10	10	9	9	9	9
21	21	2	21	21	22	23	22	22	22	5	5	23	22	5	23	22
8	7	7	7	7	10	10	10	10	11	9	9	10	11	9	9	9
13	12	12	12	12	15	14	15	15	16	16	15	16	16	15	16	15

Quilt Layout

Be sure to visit www.windhamfabrics.com to see the complete collection and to download this and other FREE Projects