

Seahorses

Designed by Josie Kate Snyder

Featuring Heather Ross' Mendocino Collection

QUILT SIZE: 60" x 67.5"








PLEASE NOTE: FABRIC LOOK MAY VARY ON YOUR PROJECT.
VISIT OUR [FREE PROJECT SECTION](#) ONLINE FOR ANY PATTERN UPDATES BEFORE STARTING QUILT PROJECT.



WINDHAM FABRICS

Seahorses

Page 2

| | | | |
|---|--|---|---|
|  40941-14 |  40939-4 |  40941-12 |  40941-4 |
| Pink Seahorses | Pink Octopus | Yellow Seahorses | Pink/Pink Seahorses |
|  40942-5 |  40943-1 |  40943-13 |  40943-19 |
| White Fish | Tan Mermaids | Purple Mermaids | Magenta Mermaids |

| | | | |
|---|---|---|---|
|  40943-11 |  40171-3 |  40171-13 |  40171-15 |
| White Mermaids | Magenta | Pink | Yellow |
|  40171-22 |  40171-28 |  40171-37 | |
| Tan | Brown | Royal | |

Fabric Requirements:

| Mendocino | | | Artisan Cottons | | |
|--------------------|-------------|----------|-----------------|------------|----------|
| | Backgrounds | | | Background | |
| Yellow Seahorse | 40941-12 | 1/2 yard | Brown | 40171-28 | 1/2 yard |
| Pink Seahorse | 40941-14 | 3/8 yard | Tan | 40171-22 | 1/2 yard |
| Tan Mermaid | 40943-1 | 1/2 yard | Yellow | 40171-15 | 3/8 yard |
| White Mermaid | 40943-11 | 5/8 yard | | | |
| White Fish | 40942-5 | 1/2 yard | | | |
| | Seahorses | | | Seahorses | |
| Purple Mermaid | 40943-13 | 1/2 yard | Royal | 40171-37 | 1/2 yard |
| Magenta Mermaid | 40943-19 | 1/2 yard | Magenta | 40171-3 | 1/2 yard |
| Pink Octopus | 40939-4 | 1/2 yard | Pink | 40171-13 | 3/8 yard |
| Pink/Pink Seahorse | 40941-4 | 1/2 yard | | | |

Backing 4 yds of 44" wide fabric

Batting 68" x 76"

Seahorses

Page 3

Cutting Instructions:

From the Yellow Seahorse (YS):
 (10) 3-3/8" squares
 (42) 3" squares

From the Pink Seahorse (PS):
 (33) 3" squares

From the Tan Mermaid (TM):
 (7) 3-3/8" squares
 (50) 3" squares

From the White Mermaid (WM):
 (20) 5-1/2" squares
 (2) 3" squares

From the White Fish (WF):
 (7) 3-3/8" squares
 (47) 3" squares

From the Brown Artisan Cotton (B):
 (4) 3-3/8" squares
 (28) 3" squares

From the Tan Artisan Cotton (T):
 (4) 3-3/8" squares
 (32) 3" squares

From the Yellow Artisan Cotton (Y):
 (4) 3-3/8" squares
 (22) 3" squares

From the Purple Mermaid (PM):
 (9) 3-3/8" squares
 (34) 3" squares

From the Magenta Mermaid (MM):
 (4) 3-3/8" squares
 (43) 3" squares

From the Pink Octopus (PO):
 (2) 3-3/8" squares
 (50) 3" squares

From the Pink/Pink Seahorse (PP):
 (9) 3-3/8" squares
 (29) 3" squares

From the Royal Artisan Cotton (R):
 (7) 3-3/8" squares
 (30) 3" squares

From the Magenta Artisan Cotton (M):
 (1) 3-3/8" square
 (33) 3" squares

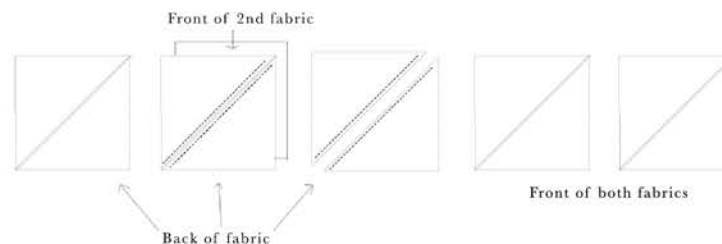
From the Pink Artisan Cotton (P):
 (9) 3-3/8" squares
 (23) 3" squares

From all remaining yardage:
 A total of (7) 2-1/2" x WOF strips for a scrappy binding

Half Square Triangles (HST):

Refer to Figure 1 to make half-square triangle units. To make two half-square triangles, draw a line on the wrong side of (1) 3-3/8" square. Pair it right sides together with a second square and stitch 1/4" on either side of the drawn line. Cut on the line, press units open, and trim to 3" square. Refer to the Half-Square Triangle table to make the indicated number of each combination. Note: You will have a few left over.

Fig 1



| | R | M | P | PM | MM | PO | PP |
|----|---|---|---|----|----|----|----|
| B | | | | | 4 | | 4 |
| Y | | | | 3 | | | 4 |
| T | | | | 4 | | | 4 |
| WF | | | 8 | | | 2 | 4 |
| TM | 6 | | 4 | 2 | | 2 | |
| YS | 6 | 2 | 6 | 5 | | | |
| PM | | | | | | | 1 |
| PP | 1 | | | | | | |

Seahorses

Page 4

Assembling the Quilt:

Refer to the Assembly Diagram on page 5 and Section Diagram on page 6 as you sew the HST units, 3" squares, and 5-1/2" squares together into sections. Within each section, sew 3" squares together to create rows or columns with the 5-1/2" squares and then join together. See Figure 2 (below) for an example of how to assemble a section.

Fig 2



After all the sections have been created, join them into rows and join the rows to assemble the quilt top. Once the top is completed, baste and quilt as desired. Then use the (7) 2-1/2" x WOF scrappy strips for binding.

Seahorses

| | | | | | | | | | | | | | | | | | | | | | | | | |
|----|----|----|----|----|----|----|----|----|----|----|----|----|----|----|----|----|----|----|----|----|----|----|----|----|
| WF | TM | PS | B | YS | T | WM | TM | B | PS | WF | Y | YS | TM | T | PS | WF | B | WM | PS | T | TM | | | |
| Y | WM | WF | TM | PS | | | YS | WF | T | YS | PS | B | WM | TM | Y | YS | | | B | WF | YS | | | |
| PS | | YS | T | R | Y | WF | B | PS | TM | Y | WF | TM | | WF | YS | PM | TM | PS | WF | Y | TM | | | |
| WF | B | PS | Y | R | MM | PO | MM | TM | T | WM | YS | T | PS | TM | MM | PO | M | PM | YS | T | WM | | | |
| TM | YS | T | R | MM | M | WM | PO | B | TM | | Y | WF | TM | B | PO | WM | MM | M | PM | TM | | | | |
| WM | | R | MM | M | MM | PO | M | PO | WF | YS | TM | WF | YS | WF | PO | MM | PO | M | MM | M | PM | T | PS | |
| | | PM | M | MM | PO | M | PP | P | PP | P | WF | TM | P | PP | P | PP | MM | PO | M | MM | R | YS | WF | |
| PS | TM | R | MM | PO | WF | YS | T | PP | P | PP | YS | PS | PP | P | PP | T | YS | WF | PO | M | PM | B | TM | |
| WF | T | PM | R | MM | P | B | WF | Y | TM | WF | B | TM | WM | Y | WF | B | P | MM | PM | R | YS | Y | | |
| B | PO | Y | PM | M | PO | P | T | YS | WM | PS | Y | | | YS | T | P | PO | PM | R | WF | PO | WF | | |
| YS | PP | P | R | PM | M | PO | P | Y | | T | WF | T | WF | Y | P | PO | MM | R | PM | PO | PP | B | | |
| T | PO | PP | PO | R | MM | M | PO | P | TM | Y | YS | B | PS | TM | P | PO | MM | M | PM | P | PP | PO | TM | |
| PS | Y | P | PP | PM | R | MM | M | PO | WF | PS | WM | TM | WF | PO | MM | M | PM | R | PP | P | YS | WM | | |
| WM | | T | PM | R | MM | M | PO | PP | B | TM | | | WF | T | PP | PO | MM | M | PM | R | TM | | | |
| | | TM | R | MM | M | PO | PP | P | YS | T | TM | PS | Y | YS | P | PP | PO | MM | M | PM | WF | Y | PS | |
| TM | T | YS | PM | M | PO | PP | P | B | PS | YS | WF | TM | WF | WM | | P | PP | PO | MM | R | YS | TM | T | |
| WF | TM | PM | M | PO | P | T | WF | TM | WM | YS | B | PS | | | T | YS | PP | PO | MM | R | YS | WF | | |
| Y | PM | M | PO | P | B | PO | MM | YS | | T | YS | WF | TM | YS | PO | MM | WF | PP | PO | MM | R | TM | | |
| YS | R | MM | PP | TM | PO | P | PP | PM | TM | Y | PS | TM | B | YS | PM | PP | P | PP | TM | PP | M | PM | B | |
| B | PM | PO | P | YS | PP | WF | P | PO | PM | YS | B | WF | YS | PM | PO | P | YS | PO | WF | P | PO | R | YS | |
| TM | R | MM | PP | T | PO | YS | B | MM | R | WF | TM | WM | | R | MM | TM | B | MM | TM | PP | M | PM | T | |
| WF | PM | M | PO | TM | B | WF | TM | PP | PM | B | PS | | | PM | PP | YS | T | WF | YS | P | PO | MM | R | TM |
| T | R | PM | M | PO | PP | P | PP | MM | R | YS | WF | Y | TM | R | MM | PP | PO | P | PO | MM | R | PM | YS | |
| PS | B | R | PM | M | MM | PO | MM | M | PM | T | PS | TM | YS | PM | M | PO | MM | PO | MM | R | PM | WM | | |
| T | WM | | R | PM | M | PM | M | PM | WF | YS | WM | B | WF | PM | R | PM | MM | R | PM | YS | | | | |
| YS | | Y | WF | TM | WM | | Y | PS | B | | PS | T | TM | YS | Y | WM | | TM | PS | YS | Y | | | |
| WF | TM | T | PS | B | YS | | YS | T | WF | PS | TM | Y | WF | YS | B | PS | | T | WF | B | PS | | | |

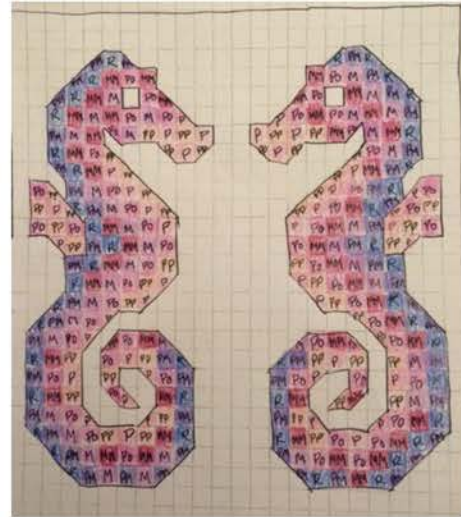
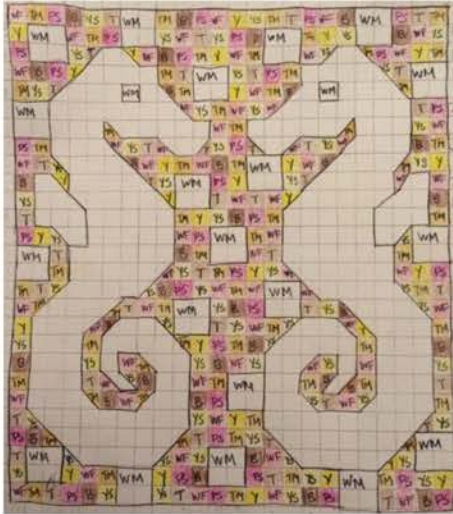


Seahorses

Helpful Hints:

Page 6

I colored in the chart. I would recommend color coding for each fabric. Break out the color pencils or markers!



I would also recommend dividing up the piecing into sections where the larger blocks do not overlap.

