

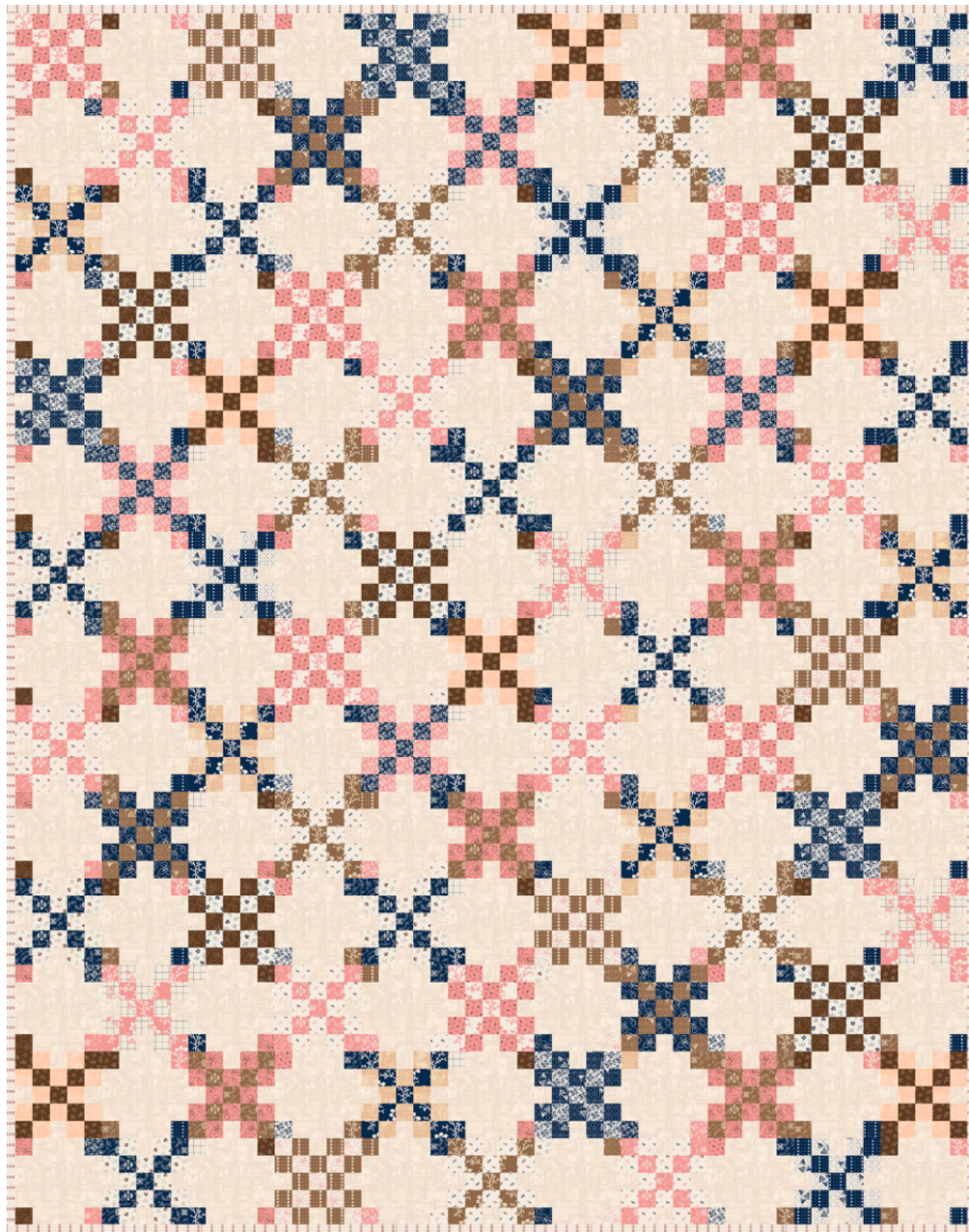
BEGINNER
SKILL

Pretty Pairs

Designed by Julie Hendricksen
Featuring *Lexington* by Julie Hendricksen

SIZE: 55" x 70"

FREE
PROJECT



THIS IS A DIGITAL REPRESENTATION OF THE QUILT TOP, FABRIC MAY VARY.

PLEASE NOTE: BEFORE MAKING YOUR PROJECT, CHECK FOR ANY PATTERN UPDATES AT WINDHAMFABRICS.COM'S FREE PROJECTS SECTION.



Pretty Pairs

WOF = WIDTH OF FABRIC

KEY	FABRIC	SKU	YD	CUTTING INSTRUCTIONS
A		52961-1 Cream	1/8	(54) 1-1/2" squares.
B		52961-2 Tan	1/4	(77) 1-1/2" squares.
C		52961-3 Pink	1/4	(57) 1-1/2" squares.
D		52961-4 Navy	1/4	(68) 1-1/2" squares.
E		52962-1 Cream	1/8	(48) 1-1/2" squares.
F		52962-2 Tan	1/8	(52) 1-1/2" squares.
G		52962-3 Pink	1/4	(62) 1-1/2" squares.
H		52962-4 Navy	1/8	(48) 1-1/2" squares.
I		52963-2 Tan	1/8	(55) 1-1/2" squares.
J		52963-4 Navy	1/4	(57) 1-1/2" squares.
K		52964-2 Tan	1/4	(91) 1-1/2" squares.
L		52964-3 Pink	1/4	(70) 1-1/2" squares.

PROJECT DISCLAIMER: Every effort has been made to ensure that all projects are error free. All the information is presented in good faith, however, no warranty can be given nor results guaranteed. Therefore, we assume no responsibility nor damages that may occur when referring to this pattern. When errors are brought to our attention, we make every effort to correct and post a revision as soon as possible. We suggest you check windhamfabrics.com for pattern updates and to test the pattern prior to making the project. Test templates first, before cutting all the pieces. Free projects are not for resale.



Pretty Pairs

WOF = WIDTH OF FABRIC

KEY	FABRIC	SKU	YD	CUTTING INSTRUCTIONS
M		52964-4 Navy	1/4	(93) 1-1/2" squares.
N		52965-1 Cream	1/8	(50) 1-1/2" squares.
O		52965-3 Pink	1/4	(62) 1-1/2" squares.
P		52965-4 Navy	1/8	(50) 1-1/2" squares.
Q		52966-3 Pink	1/4	(91) 1-1/2" squares.
R		52966-4 Navy	1/4	(84) 1-1/2" squares.
S		52967-1 Cream	1/4	(103) 1-1/2" squares.
T		52967-3 Pink	1/4	(86) 1-1/2" squares.
U		52967-4 Navy	1/8	(45) 1-1/2" squares.
V		52967-5 Brown	1/4	(89) 1-1/2" squares.
W		52968-1 Cream	1/8	(43) 1-1/2" squares.
X		52968-3 Pink	1/4	(105) 1-1/2" squares.
Y		52968-3 Navy	1/4	(67) 1-1/2" squares.
Z		52968-5 Brown	1/4	(67) 1-1/2" squares.



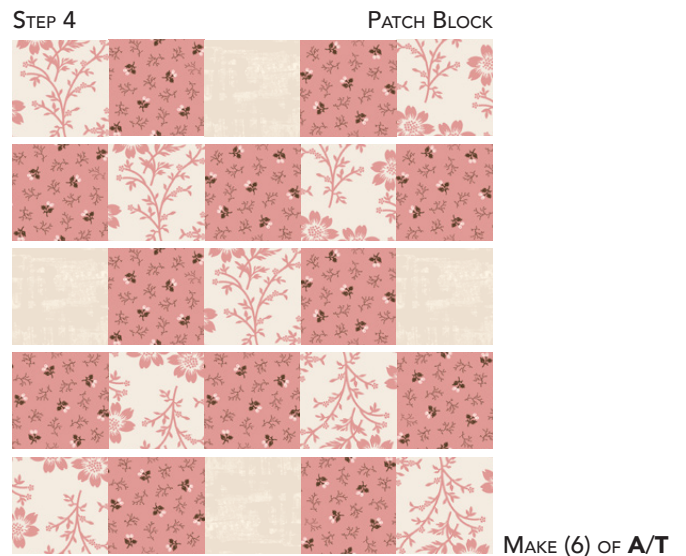
Pretty Pairs

WOF = WIDTH OF FABRIC

KEY	FABRIC	SKU	YD	CUTTING INSTRUCTIONS
AA		52782-3 Wheat	1/4	(79) 1-1/2" squares.
BB		52782-45 Seashell	1/4	(72) 1-1/2" squares.
CC		52963-1 Cream BINDING	5/8	(7) 2-1/2" x WOF" strips.
DD		52782-2 Sand	2-2/3	(77) 3-1/2" x 5-1/2" rectangles. (154) 1-1/2" x 3-1/2" rectangles. (308) 1-1/2" squares.
		Backing	3-1/2	Batting 61" x 76" piece.

PATCH BLOCKS

1. Rows 1, 5: Sew together (2) **A**, (2) **T** and (1) **DD** 1-1/2" squares, as shown, to make (2) row units.
2. Rows 2, 4: Sew together (2) **A** and (3) **T** 1-1/2" squares to make (2) row units.
3. Row 3: Sew together (1) **A**, (2) **T** and (2) **DD** 1-1/2" squares to make (1) row unit.
4. Noting rotation and placement of units, sew together Rows 1-5 to complete (1) Patch Block. Make (6).

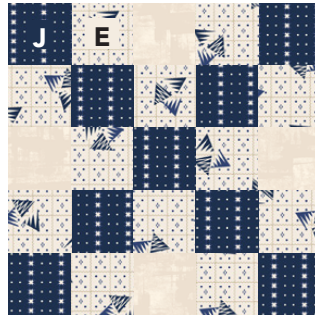
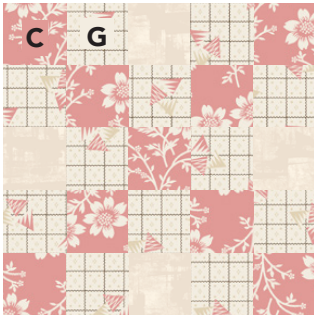




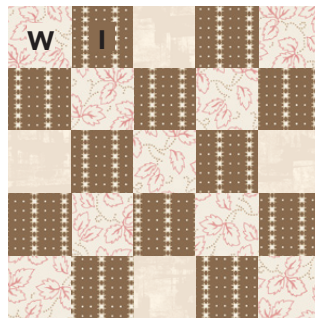
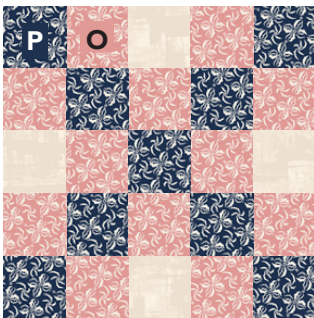
Pretty Pairs

5. Using (4) **DD** for each, repeat Steps 1-4 to make a total number of the following Patch Block fabric combinations:

MAKE (4) EACH



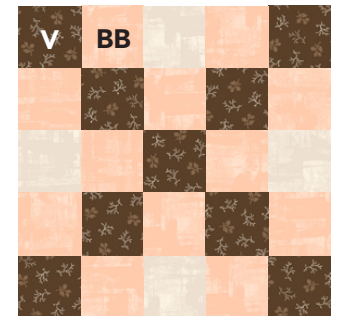
MAKE (8)



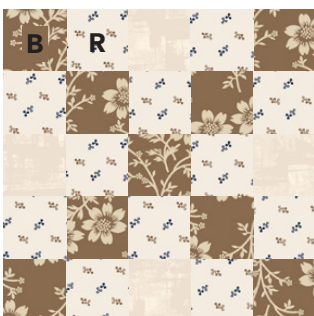
MAKE (5) EACH



MAKE (6) EACH



MAKE (7) EACH





Pretty Pairs

FOUR-CORNER BLOCKS

- Row 1: Sew (1) **V** and **C** 1-1/2" squares to the short sides of (1) **DD** 1-1/2" x 3-1/2" rectangle.
- Row 3: Sew (1) **K** and **J** 1-1/2" squares to the short sides of (1) **DD** 1-1/2" x 3-1/2" rectangle.
- Sew Rows 1 and 3 to the long sides of (1) **DD** 3-1/2" x 5-1/2" rectangle, as shown, to complete a Four-Corner Block. Make (21).



- Using (1) **DD** 3-1/2" x 5-1/2" rectangle for each, repeat Steps 6-8 to make a total number of the following Four-Corner Block fabric combinations:

MAKE (14) OF EACH



G/V/D/X



T/M/N/B

MAKE (7) OF EACH



AA/K/P/O



I/M/O/Q



S/F/Y/W



X/P/Z/L



Pretty Pairs

QUILT TOP ASSEMBLY

Use Quilt Diagram on Page 7 as a reference.

10. Rows 1, 3, 5, 7, 9, 11, and 13:

Arrange and sew together (6) Patch Blocks and (5) Four-Corner Blocks.

Rows 2, 4, 6, 8, 10, 12, and 14:

Arrange and sew together (6) Four-Corner Blocks and (5) Patch Blocks.

11. Sew pieced rows together to complete quilt top.



Pretty Pairs

QUILT DIAGRAM

Row 1	A/T	V/C K/J	W/I	T/M N/B	N/H	G/V D/X	V/BB	AA/K P/O	K/X	V/C K/J	J/E
Row 2	X/P Z/L	L/Q	G/V D/X	F/Y	I/M O/Q	P/O	S/F Y/W	B/R	T/M N/B	U/Z	V/C K/J
Row 3	D/AA	V/C K/J	M/S	T/M N/B	B/R	G/V D/X	J/E	AA/K P/O	A/T	V/C K/J	C/G
Row 4	X/P Z/L	U/Z	G/V D/X	A/T	I/M O/Q	K/X	S/F Y/W	D/AA	T/M N/B	V/BB	V/C K/J
Row 5	N/H	V/C K/J	V/BB	T/M N/B	L/Q	G/V D/X	F/Y	AA/K P/O	P/O	V/C K/J	M/S
Row 6	X/P Z/L	P/O	G/V D/X	B/R	I/M O/Q	M/S	S/F Y/W	B/R	T/M N/B	L/Q	V/C K/J
Row 7	M/S	V/C K/J	J/E	T/M N/B	U/Z	G/V D/X	C/G	AA/K P/O	K/X	V/C K/J	D/AA
Row 8	X/P Z/L	K/X	G/V D/X	A/T	I/M O/Q	V/BB	S/F Y/W	M/S	T/M N/B	W/I	V/C K/J
Row 9	L/Q	V/C K/J	D/AA	T/M N/B	P/O	G/V D/X	L/Q	AA/K P/O	A/T	V/C K/J	F/Y
Row 10	X/P Z/L	F/Y	G/V D/X	B/R	I/M O/Q	K/X	S/F Y/W	D/AA	T/M N/B	N/H	V/C K/J
Row 11	M/S	V/C K/J	U/Z	T/M N/B	M/S	G/V D/X	W/I	AA/K P/O	B/R	V/C K/J	C/G
Row 12	X/P Z/L	C/G	G/V D/X	L/Q	I/M O/Q	A/T	S/F Y/W	F/Y	T/M N/B	U/Z	V/C K/J
Row 13	V/BB	V/C K/J	K/X	T/M N/B	D/AA	G/V D/X	N/H	AA/K P/O	K/X	V/C K/J	V/BB
Row 14	X/P Z/L	M/S	G/V D/X	W/I	I/M O/Q	B/R	S/F Y/W	L/Q	T/M N/B	J/E	V/C K/J

FINISHING: Layer quilt top, batting and backing together to form quilt sandwich. Baste and quilt as desired. Bind using **CC** 2-1/2" strips.