

INTERMEDIATE
SKILL

Perfect Points Wholecloth

Patterns by Lisa Swenson Ruble
featuring *Perfect Points* by Whistler Studios
SIZES: LAP / TWIN / QUEEN

7 Perfect Points
Wholecloth Quilts

FREE
PROJECT



THIS IS A DIGITAL REPRESENTATION OF THE QUILT TOP, FABRIC MAY VARY.

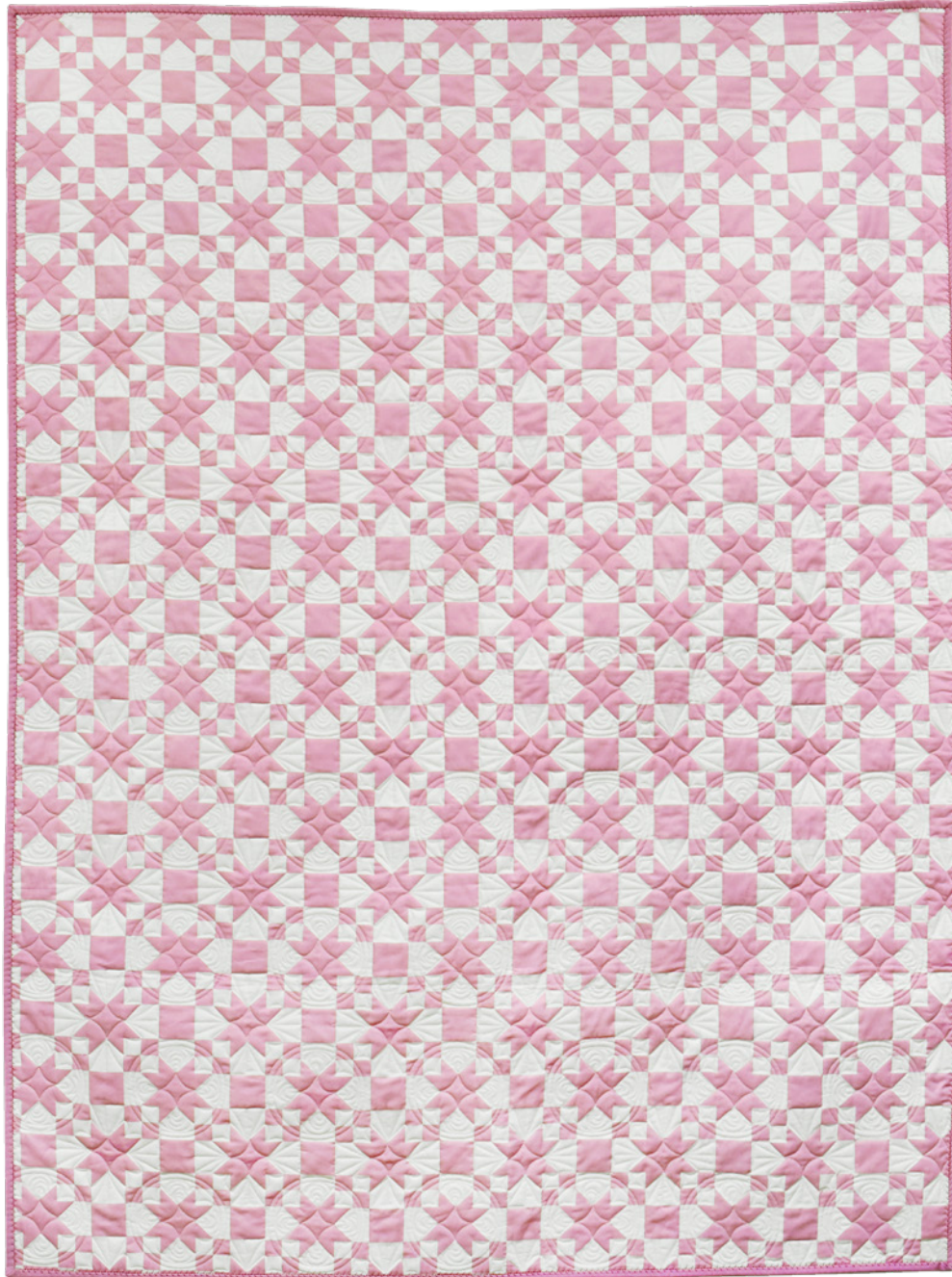
PLEASE NOTE: BEFORE MAKING YOUR PROJECT, CHECK FOR ANY PATTERN UPDATES AT WINDHAMFABRICS.COM'S FREE PROJECTS SECTION.

INTERMEDIATE
SKILL

Missouri Star Wholecloth

pattern by Lisa Swenson Ruble
featuring *Perfect Points* by Whistler Studios

SIZES: APPROXIMATELY 41" x 54" (LAP), 60" x 89" (TWIN) OR 79" x 89" (QUEEN)



THIS IS A DIGITAL REPRESENTATION OF THE QUILT TOP, FABRIC MAY VARY.

PLEASE NOTE: BEFORE MAKING YOUR PROJECT, CHECK FOR ANY PATTERN UPDATES AT [WINDHAMFABRICS.COM](https://www.windhamfabrics.com)'S FREE PROJECTS SECTION.

FREE
PROJECT




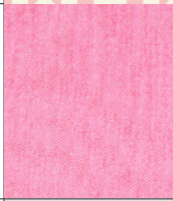
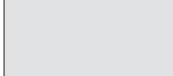
Missouri Star Wholecloth

PROJECT DISCLAIMER: Every effort has been made to ensure that all projects are error free. All the information is presented in good faith, however, no warranty can be given nor results guaranteed. Therefore, we assume no responsibility nor damages that may occur when referring to this pattern. When errors are brought to our attention, we make every effort to correct and post a revision as soon as possible. We suggest you check windhamfabrics.com for pattern updates and to test the pattern prior to making the project. Test templates first, before cutting all the pieces. Free projects are not for resale.


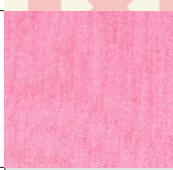
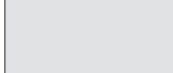
WOF=WIDTH OF FABRIC

Note: Refer to Cutting Diagram on p. 2 before cutting yardage.

Lap Size 41" x 54"

KEY	FABRIC	SKU	YD	CUTTING INSTRUCTIONS
A		54228-5 Blush	1-3/4	Trim to approximately WOF" x 60"
B		ARTISAN COTTON: 40171-70 Dk/Lt Pink	1/2	(5) 2-1/4" x 42" strips for binding.
		Backing	2-3/4	Batting 49" x 62"



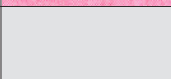
Twin Size 60" x 89"

KEY	FABRIC	SKU	YD	CUTTING INSTRUCTIONS
A		54228-5 Blush	5-3/4	Cut (2) 42" x 99" LOF pieces. Trim each piece 1/4" past edges of a printed block on long sides.*
B		ARTISAN COTTON: 40171-70 Dk/Lt Pink	5/8	(8) 2-1/4" x 42" strips for binding.
		Backing	5-1/2	Batting 68" x 97"



Missouri Star Wholecloth

Queen Size 79" x 89"

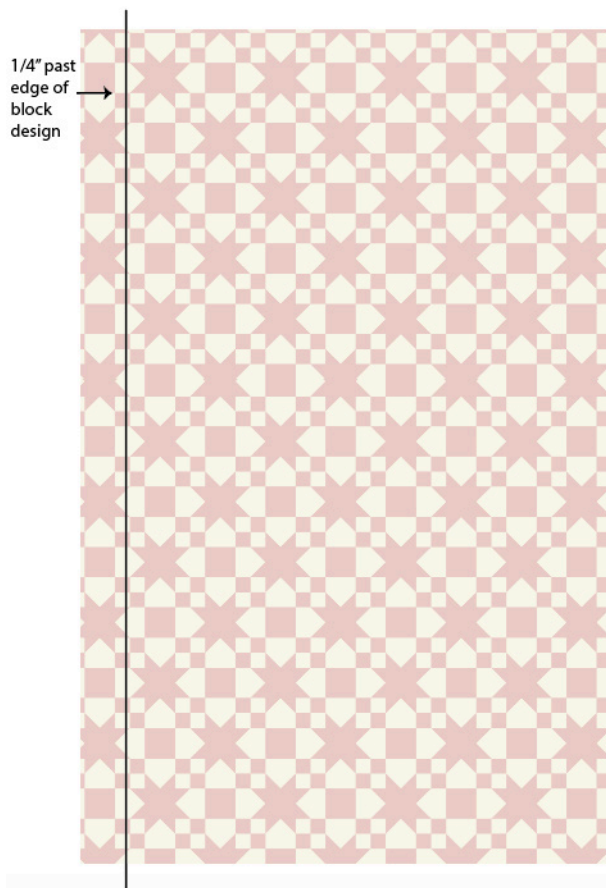
KEY	FABRIC	SKU	YD	CUTTING INSTRUCTIONS
A		54228-5 Blush	5-3/4	Cut (2) 42" x 99" LOF pieces. Trim each piece 1/4" past edges of a printed block on long sides.*
B		ARTISAN COTTON: 40171-70 Dk/Lt Pink	3/4	(10) 2-1/4" x 42" strips for binding.
		Backing	8-1/4	Batting 87" x 97"

CUTTING NOTES

To make your wholecloth look like a pieced quilt, cut fabric so printed block pattern starts and ends at bound quilt edges. Measurements listed in Cutting Chart are approximate; your measurements may vary based on washing fabric, printing variations, etc. Trim fabric pieces to 1/4" past outer edge of block design, using our measurements as a general guide.

*If you prefer, trim yardage to 1/4" past block edge on just the left edge of (1) fabric piece and just the right edge of (1) fabric piece (these will be the joined edges in step 1). After quilting, trim entire quilt to 1/4" past printed blocks.

When joining cut lengths of fabric, align prints so the design continues as seamlessly as possible.





Missouri Star Wholecloth

MAKING THE LAP QUILT

Layer quilt top (**A** piece measuring approximately 41-1/2" x 54-1/2"), batting and backing together to form quilt sandwich. Baste and quilt as desired. Bind using **B** 2-1/4" strips.

MAKING THE TWIN QUILT

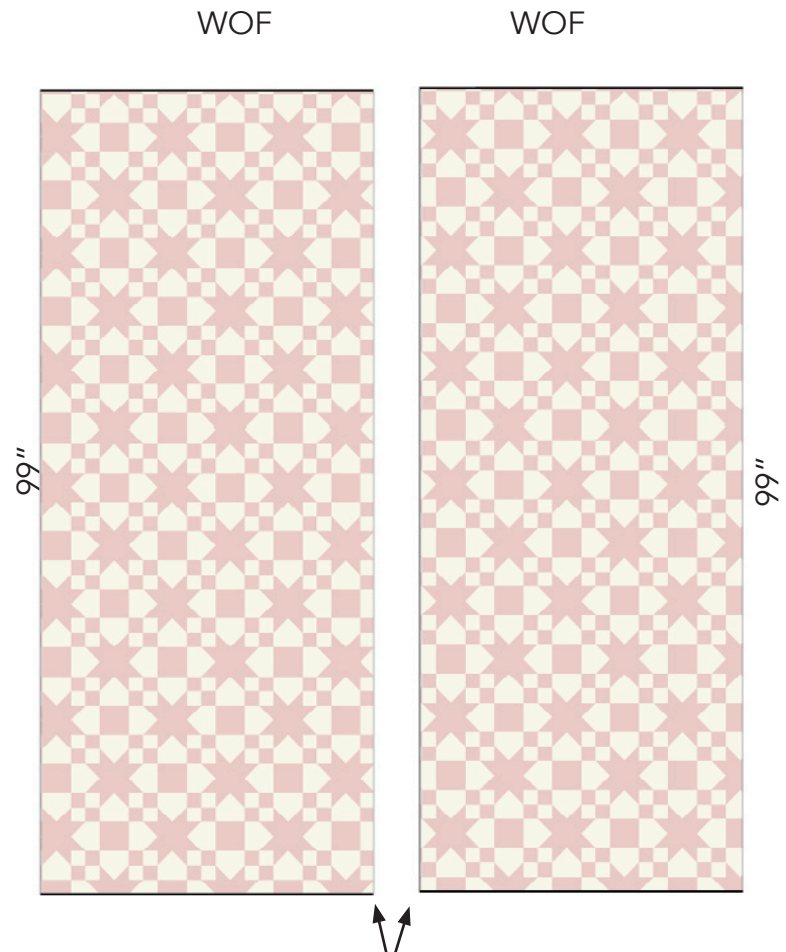
1. Sew (2) WOF x 99" **A** pieces together along long edge, aligning pieces so the block design matches and flows continuously. Trim quilt top to measure approximately 64" x 93".

2. Layer quilt top, batting and backing together to form quilt sandwich. Baste and quilt as desired. Trim quilt to measure approximately 60-1/2" x 89-1/2", trimming 1/4" past printed block edges. Bind using **B** 2-1/4" strips.

MAKING THE QUEEN QUILT

1. Sew (2) WOF x 99" **A** pieces together along long edge, aligning pieces so the block design matches and flows continuously. Trim quilt top to measure approximately 82" x 92".

2. Layer quilt top, batting and backing together to form quilt sandwich. Baste and quilt as desired. Trim quilt to measure approximately 79-1/2" x 89-1/2", trimming 1/4" past printed block edges. Bind using **B** 2-1/4" strips.



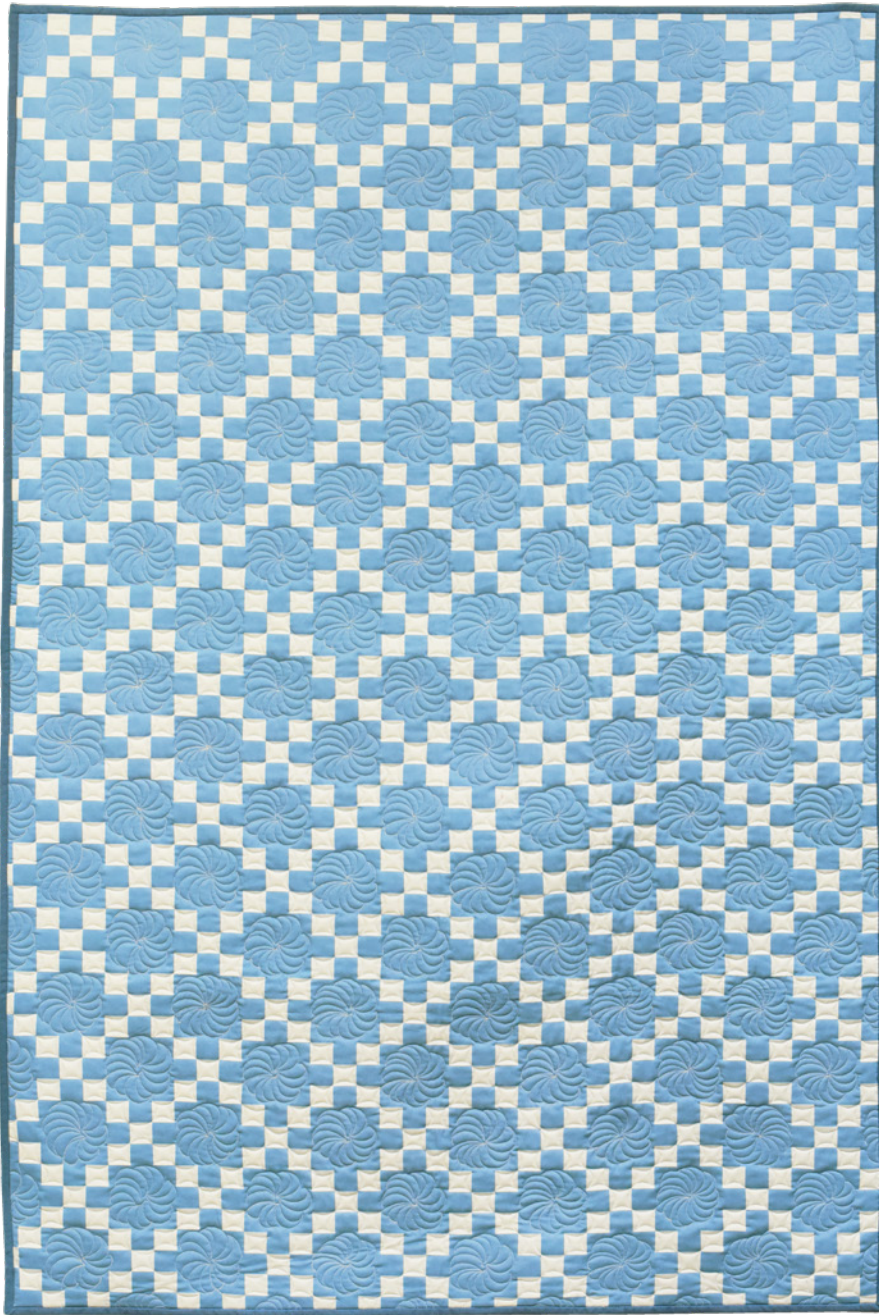
* If you only trimmed one edge of each piece, join these edges in the center.

INTERMEDIATE
SKILL

Nine Patch Wholecloth

pattern by Lisa Swenson Ruble
featuring *Perfect Points* by Whistler Studios

SIZES: APPROXIMATELY 40" x 57" (LAP), 60" x 90" (TWIN) OR 80" x 90" (QUEEN)



THIS IS A DIGITAL REPRESENTATION OF THE QUILT TOP, FABRIC MAY VARY.

PLEASE NOTE: BEFORE MAKING YOUR PROJECT, CHECK FOR ANY PATTERN UPDATES AT [WINDHAMFABRICS.COM](https://www.windhamfabrics.com)'S FREE PROJECTS SECTION.

FREE
PROJECT




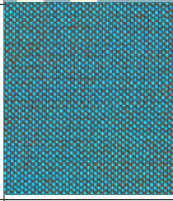
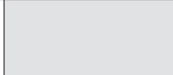
Nine Patch Wholecloth

PROJECT DISCLAIMER: Every effort has been made to ensure that all projects are error free. All the information is presented in good faith, however, no warranty can be given nor results guaranteed. Therefore, we assume no responsibility nor damages that may occur when referring to this pattern. When errors are brought to our attention, we make every effort to correct and post a revision as soon as possible. We suggest you check windhamfabrics.com for pattern updates and to test the pattern prior to making the project. Test templates first, before cutting all the pieces. Free projects are not for resale.


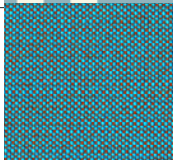
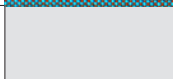
WOF=WIDTH OF FABRIC

Note: Refer to Cutting Diagram on p. 2 before cutting yardage.

Lap Size 40" x 57"

KEY	FABRIC	SKU	YD	CUTTING INSTRUCTIONS
A		54227-4 Blue	1-3/4	Trim to approximately 40-1/2" x 57-1/2", cutting 1/4" past edges of a printed block.*
B		ARTISAN COTTON: 40171-3 Turq/Copper	1/2	(5) 2-1/4" x 42" strips for binding.
		Backing	2-3/4	Batting 48" x 64"


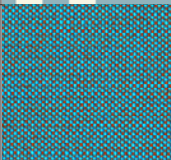
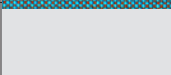
Twin Size 60" x 90"

KEY	FABRIC	SKU	YD	CUTTING INSTRUCTIONS
A		54227-4 Blue	5-1/2	Cut (2) 42" x 99" LOF pieces. Trim each piece 1/4" past edges of a printed block on long sides.*
B		ARTISAN COTTON: 40171-3 Turq/Copper	5/8	(8) 2-1/4" x 42" strips for binding.
		Backing	5-1/2	Batting 68" x 98"



Nine Patch Wholecloth

Queen Size 80" x 90"

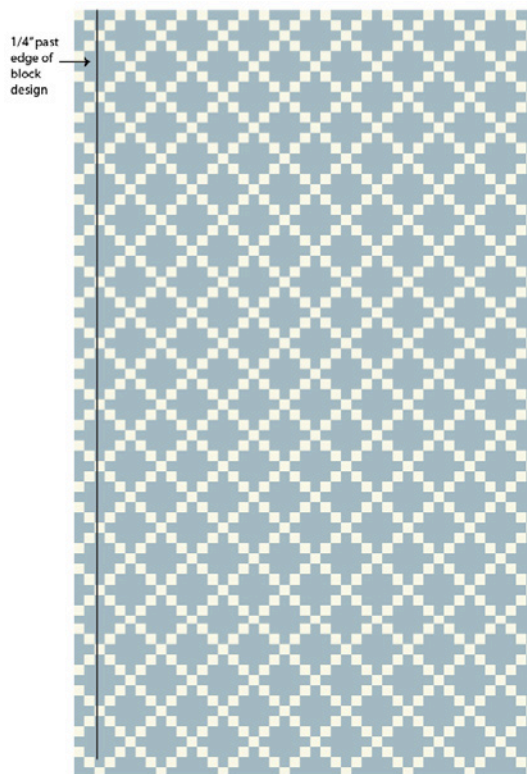
KEY	FABRIC	SKU	YD	CUTTING INSTRUCTIONS
A		54227-4 Blue	5-1/2	Cut (2) 42" x 99" LOF pieces. Trim each piece 1/4" past edges of a printed block on long sides.*
B		ARTISAN COTTON: 40171-3 Turq/Copper	3/4	(10) 2-1/4" x 42" strips for binding.
		Backing	8-1/4	Batting 86" x 98"

CUTTING NOTES

To make your wholecloth look like a pieced quilt, cut fabric so printed block pattern starts and ends at bound quilt edges. Measurements listed in Cutting Chart are approximate; your measurements may vary based on washing fabric, printing variations, etc. Trim fabric pieces to 1/4" past outer edge of block design, using our measurements as a general guide.

*If you prefer, trim yardage to 1/4" past block edge on just the left edge of (1) fabric piece and just the right edge of (1) fabric piece (these will be the joined edges in step 1). After quilting, trim entire quilt to 1/4" past printed blocks.

When joining cut lengths of fabric, align prints so the design continues as seamlessly as possible.





Nine Patch Wholecloth

MAKING THE LAP QUILT

Layer quilt top (**A** piece measuring approximately 40-1/2" x 57-1/2"), batting and backing together to form quilt sandwich. Baste and quilt as desired. Bind using **B** 2-1/4" strips.

MAKING THE TWIN QUILT

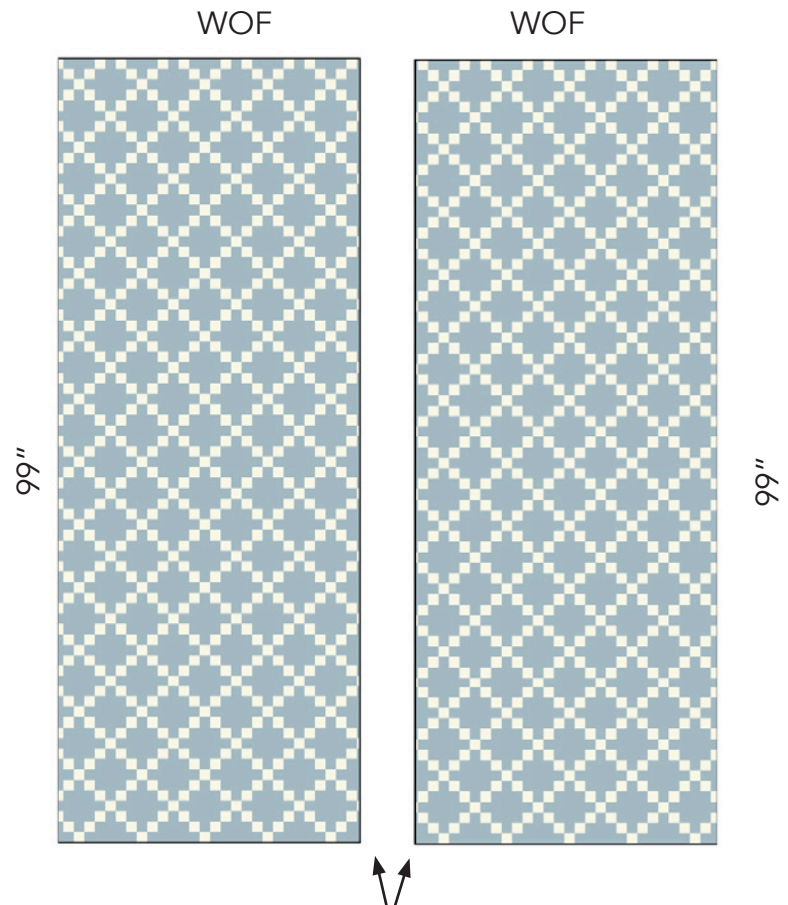
1. Sew (2) WOF x 99" **A** pieces together along long edge, aligning pieces so the block design matches and flows continuously. Trim quilt top to measure approximately 65" x 94".

2. Layer quilt top, batting and backing together to form quilt sandwich. Baste and quilt as desired. Trim quilt to measure approximately 60-1/2" x 90-1/2", trimming 1/4" past printed block edges. Bind using **B** 2-1/4" strips.

MAKING THE QUEEN QUILT

1. Sew (2) WOF x 99" **A** pieces together along long edge, aligning pieces so the block design matches and flows continuously. Trim quilt top to measure approximately 83" x 94".

2. Layer quilt top, batting and backing together to form quilt sandwich. Baste and quilt as desired. Trim quilt to measure approximately 80-1/2" x 90-1/2", trimming 1/4" past printed block edges. Bind using **B** 2-1/4" strips.



* If you only trimmed one edge of each piece, join these edges in the center.

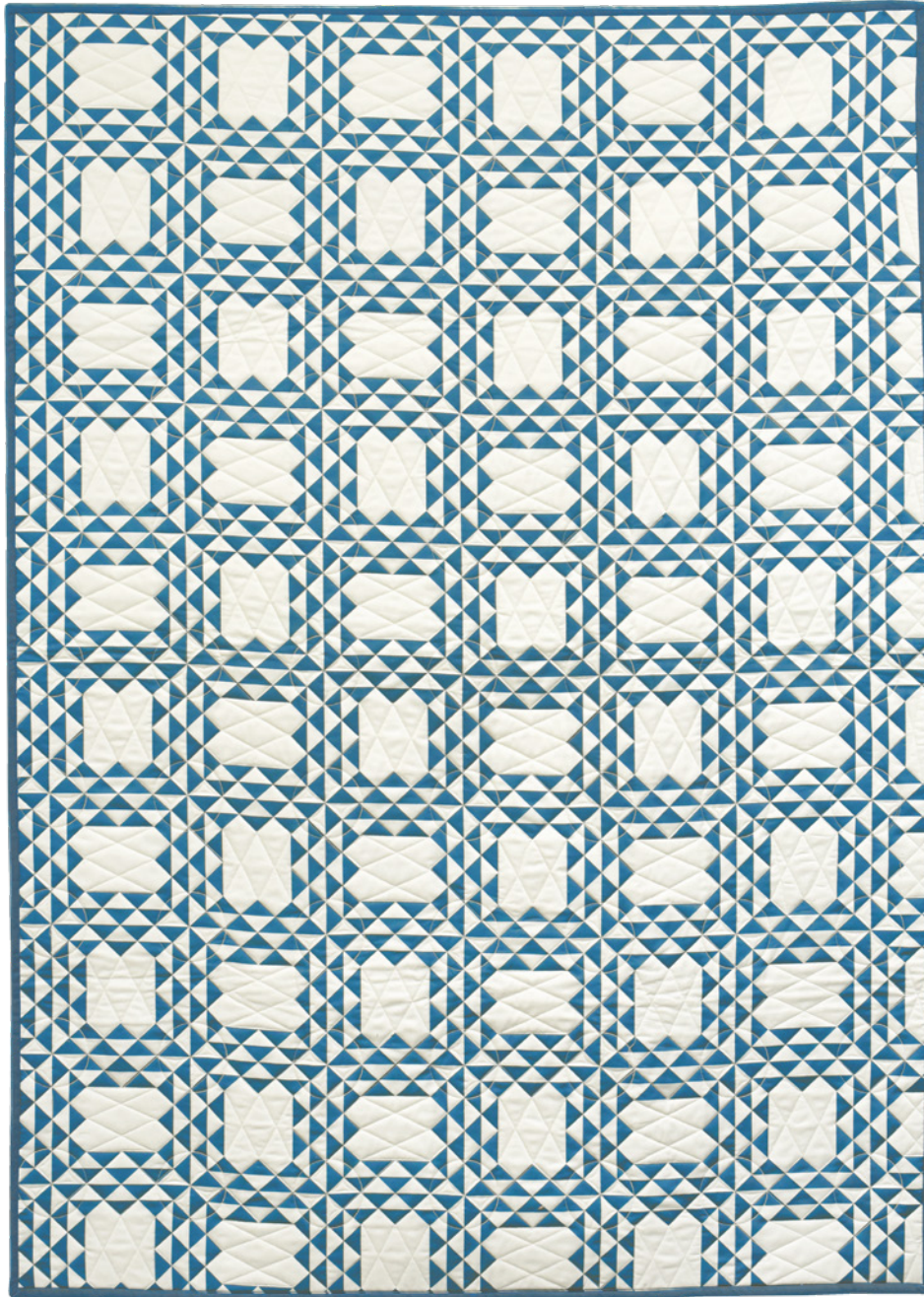
INTERMEDIATE
SKILL

Ocean Waves Wholecloth

pattern by Lisa Swenson Ruble

featuring *Perfect Points* by Whistler Studios

SIZES: APPROXIMATELY 42" x 54" (LAP), 61" x 90" (TWIN) OR 79" x 90" (QUEEN)



THIS IS A DIGITAL REPRESENTATION OF THE QUILT TOP, FABRIC MAY VARY.

PLEASE NOTE: BEFORE MAKING YOUR PROJECT, CHECK FOR ANY PATTERN UPDATES AT [WINDHAMFABRICS.COM](https://www.windhamfabrics.com)'S FREE PROJECTS SECTION.FREE
PROJECT



Ocean Waves Wholecloth

PROJECT DISCLAIMER: Every effort has been made to ensure that all projects are error free. All the information is presented in good faith, however, no warranty can be given nor results guaranteed. Therefore, we assume no responsibility nor damages that may occur when referring to this pattern. When errors are brought to our attention, we make every effort to correct and post a revision as soon as possible. We suggest you check windhamfabrics.com for pattern updates and to test the pattern prior to making the project. Test templates first, before cutting all the pieces. Free projects are not for resale.

WOF=WIDTH OF FABRIC

Note: Refer to Cutting Diagram on p. 2 before cutting yardage.

Lap Size 42" x 54"

KEY	FABRIC	SKU	YD	CUTTING INSTRUCTIONS
A		54229-6 Slate	1-3/4	Trim to approximately WOF" x 60"
B		ARTISAN COTTON: 40171-35 Aqua/Blue	1/2	(5) 2-1/4" x 42" strips for binding.
		Backing	2-3/4	Batting 50" x 62"

Twin Size 61" x 90"

KEY	FABRIC	SKU	YD	CUTTING INSTRUCTIONS
A		54229-6 Slate	5-1/2	Cut (2) 42" x 99" LOF pieces. Trim each piece 1/4" past edges of a printed block on long sides.*
B		ARTISAN COTTON: 40171-35 Aqua/Blue	5/8	(8) 2-1/4" x 42" strips for binding.
		Backing	5-1/2	Batting 69" x 98"



Ocean Waves Wholecloth

Queen Size 79" x 90"

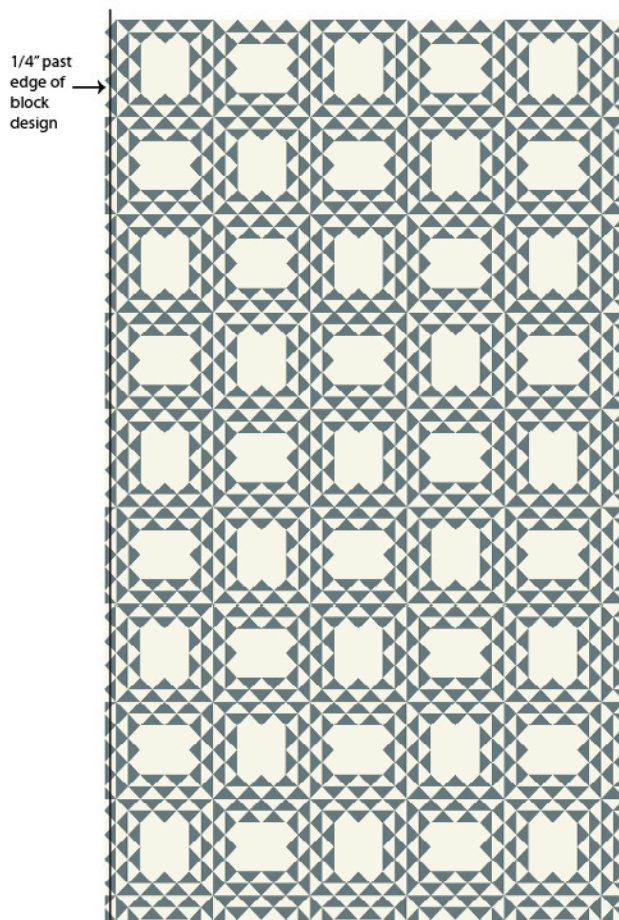
KEY	FABRIC	SKU	YD	CUTTING INSTRUCTIONS
A		54229-6 Slate	5-1/2	Cut (2) 42" x 99" LOF pieces. Trim each piece 1/4" past edges of a printed block on long sides.*
B		ARTISAN COTTON: 40171-35 Aqua/Blue	3/4	(10) 2-1/4" x 42" strips for binding.
		Backing	8-1/4	Batting 88" x 98"

CUTTING NOTES

To make your wholecloth look like a pieced quilt, cut fabric so printed block pattern starts and ends at bound quilt edges. Measurements listed in Cutting Chart are approximate; your measurements may vary based on washing fabric, printing variations, etc. Trim fabric pieces to 1/4" past outer edge of block design, using our measurements as a general guide.

*If you prefer, trim yardage to 1/4" past block edge on just the left edge of (1) fabric piece and just the right edge of (1) fabric piece (these will be the joined edges in step 1). After quilting, trim entire quilt to 1/4" past printed blocks.

When joining cut lengths of fabric, align prints so the design continues as seamlessly as possible.





Ocean Waves Wholecloth

MAKING THE LAP QUILT

Layer quilt top (**A** piece measuring approximately 42-1/2" x 54-1/2"), batting and backing together to form quilt sandwich. Baste and quilt as desired. Bind using **B** 2-1/4" strips.

MAKING THE TWIN QUILT

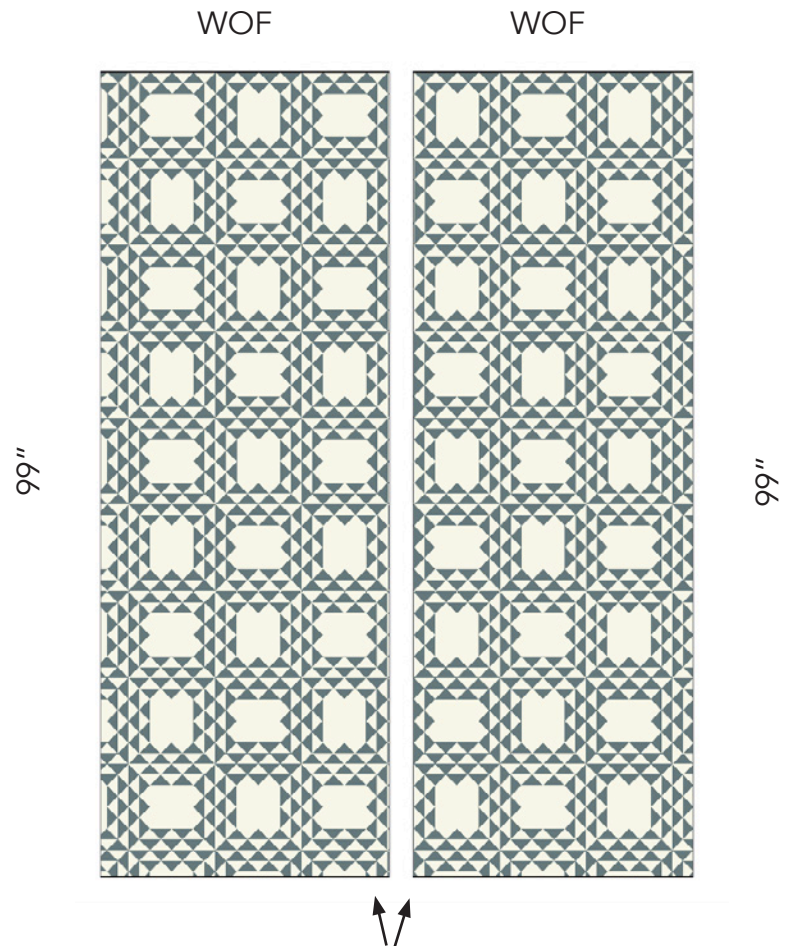
1. Sew (2) WOF x 99" **A** pieces together along long edge, aligning pieces so the block design matches and flows continuously. Trim quilt top to measure approximately 65" x 94".

2. Layer quilt top, batting and backing together to form quilt sandwich. Baste and quilt as desired. Trim quilt to measure approximately 61-1/2" x 90-1/2", trimming 1/4" past printed block edges. Bind using **B** 2-1/4" strips.

MAKING THE QUEEN QUILT

1. Sew (2) WOF x 99" **A** pieces together along long edge, aligning pieces so the block design matches and flows continuously. Trim quilt top to measure approximately 82" x 94".

2. Layer quilt top, batting and backing together to form quilt sandwich. Baste and quilt as desired. Trim quilt to measure approximately 79-1/2" x 90-1/2", trimming 1/4" past printed block edges. Bind using **B** 2-1/4" strips.



* If you only trimmed one edge of each piece, join these edges in the center.

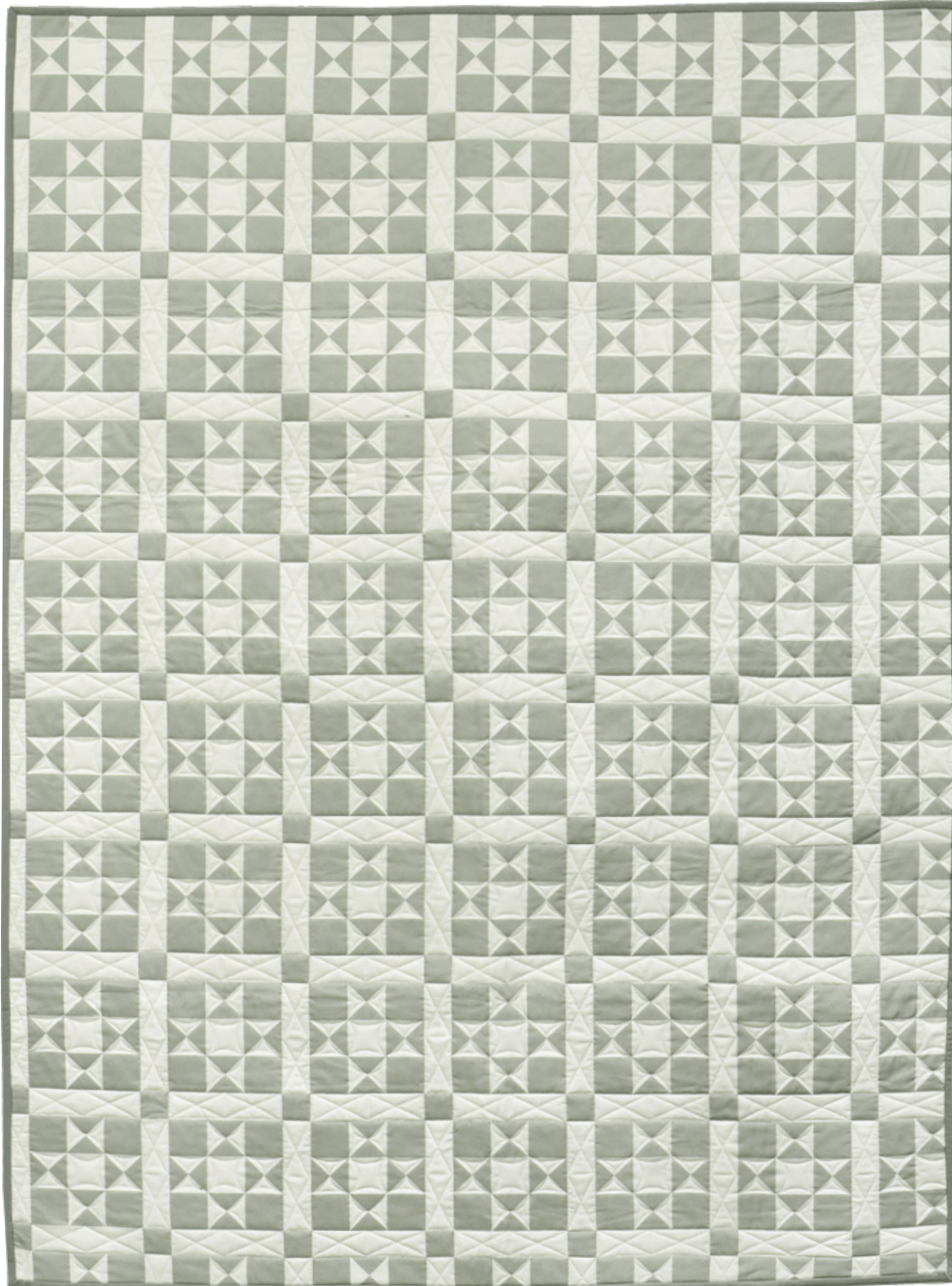
INTERMEDIATE
SKILL

Ohio Star Wholecloth

pattern by Lisa Swenson Ruble

featuring *Perfect Points* by Whistler Studios

SIZES: APPROXIMATELY 38" x 51" (LAP), 64" x 90" (TWIN) OR 77" x 90" (QUEEN)



THIS IS A DIGITAL REPRESENTATION OF THE QUILT TOP, FABRIC MAY VARY.

PLEASE NOTE: BEFORE MAKING YOUR PROJECT, CHECK FOR ANY PATTERN UPDATES AT [WINDHAMFABRICS.COM](https://www.windhamfabrics.com)'S FREE PROJECTS SECTION.FREE
PROJECT



Ohio Star Wholecloth

PROJECT DISCLAIMER: Every effort has been made to ensure that all projects are error free. All the information is presented in good faith, however, no warranty can be given nor results guaranteed. Therefore, we assume no responsibility nor damages that may occur when referring to this pattern. When errors are brought to our attention, we make every effort to correct and post a revision as soon as possible. We suggest you check windhamfabrics.com for pattern updates and to test the pattern prior to making the project. Test templates first, before cutting all the pieces. Free projects are not for resale.

Note: Refer to Cutting Diagram on p. 2 before cutting yardage.

WOF=WIDTH OF FABRIC

Lap Size 38" x 51"

KEY	FABRIC	SKU	YD	CUTTING INSTRUCTIONS
A		54231-8 Taupe	1-3/4	Trim to approximately 38-1/2" x 51-1/2", cutting 1/4" past edges of a printed block.*
B		RUBY + BEE SOLIDS: 51583-52 Pewter	1/2	(5) 2-1/4" x 42" strips for binding.
		Backing	2-3/4	Batting 48" x 64"

Twin Size 64" x 90"

KEY	FABRIC	SKU	YD	CUTTING INSTRUCTIONS
A		54231-8 Taupe	5-1/2	Cut (2) 42" x 99" LOF pieces. Trim each piece 1/4" past edges of a printed block on long sides.*
B		RUBY + BEE SOLIDS: 51583-52 Pewter	5/8	(8) 2-1/4" x 42" strips for binding.
		Backing	5-1/2	Batting 68" x 98"



Ohio Star Wholecloth

Queen Size 77" x 90"

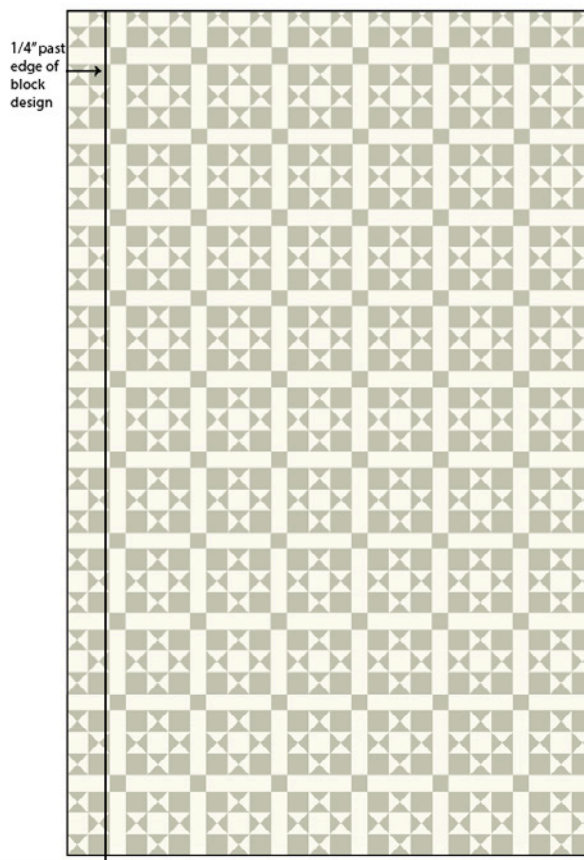
KEY	FABRIC	SKU	YD	CUTTING INSTRUCTIONS
A		54231-8 Taupe	5-1/2	Cut (2) 42" x 99" LOF pieces. Trim each piece 1/4" past edges of a printed block on long sides.*
B		RUBY + BEE SOLIDS: 51583-52 Pewter	3/4	(10) 2-1/4" x 42" strips for binding.
		Backing	8-1/4	Batting 86" x 98"

CUTTING NOTES

To make your wholecloth look like a pieced quilt, cut fabric so printed block pattern starts and ends at bound quilt edges. Measurements listed in Cutting Chart are approximate; your measurements may vary based on washing fabric, printing variations, etc. Trim fabric pieces to 1/4" past outer edge of block design, using our measurements as a general guide.

*If you prefer, trim yardage to 1/4" past block edge on just the left edge of (1) fabric piece and just the right edge of (1) fabric piece (these will be the joined edges in step 1). After quilting, trim entire quilt to 1/4" past printed blocks.

When joining cut lengths of fabric, align prints so the design continues as seamlessly as possible.





Ohio Star Wholecloth

MAKING THE LAP QUILT

Layer quilt top (**A** piece measuring approximately 38-1/2" x 51-1/2"), batting and backing together to form quilt sandwich. Baste and quilt as desired. Bind using **B** 2-1/4" strips.

MAKING THE TWIN QUILT

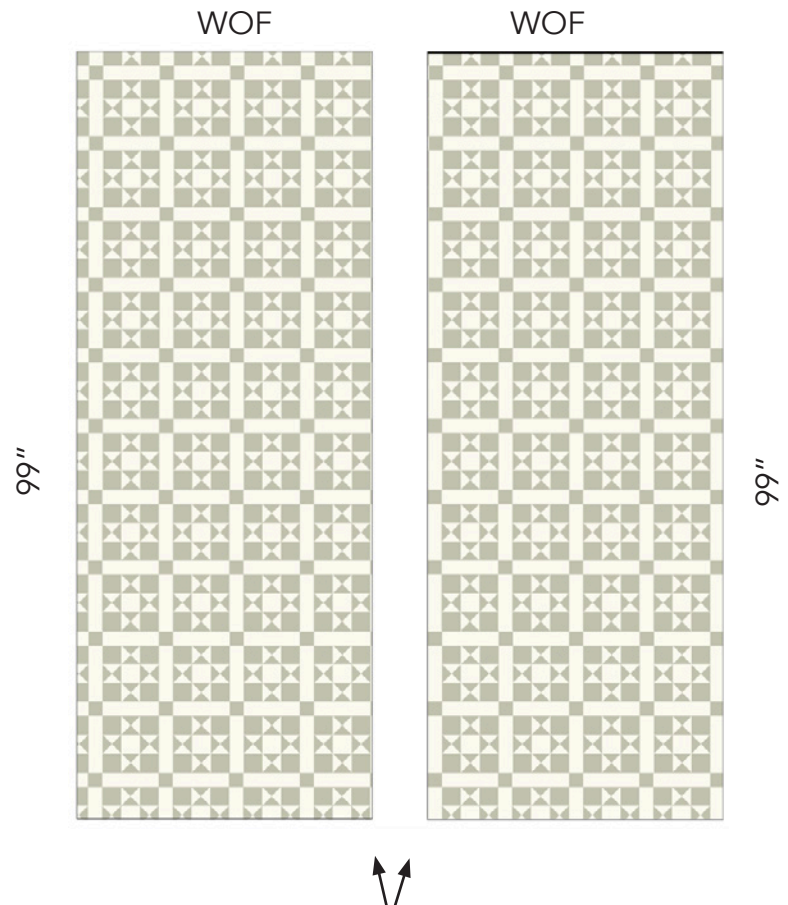
1. Sew (2) WOF x 99" **A** pieces together along long edge, aligning pieces so the block design matches and flows continuously. Trim quilt top to measure approximately 68" x 94".

2. Layer quilt top, batting and backing together to form quilt sandwich. Baste and quilt as desired. Trim quilt to measure approximately 64-1/2" x 90-1/2", trimming 1/4" past printed block edges. Bind using **B** 2-1/4" strips.

MAKING THE QUEEN QUILT

1. Sew (2) WOF x 99" **A** pieces together along long edge, aligning pieces so the block design matches and flows continuously. Trim quilt top to measure approximately 80" x 94".

2. Layer quilt top, batting and backing together to form quilt sandwich. Baste and quilt as desired. Trim quilt to measure approximately 77-1/2" x 90-1/2", trimming 1/4" past printed block edges. Bind using **B** 2-1/4" strips.



* If you only trimmed one edge of each piece, join these edges in the center.



Pickle Dish Wholecloth

pattern by Lisa Swenson Ruble
featuring *Perfect Points* by Whistler Studios

SIZES: APPROXIMATELY 39" x 55" (LAP), 60" x 90" (TWIN) OR 78" x 90" (QUEEN)



DOUBLE SIDED
WHOLECLOTH

THIS IS A DIGITAL REPRESENTATION OF THE QUILT TOP, FABRIC MAY VARY.

PLEASE NOTE: BEFORE MAKING YOUR PROJECT, CHECK FOR ANY PATTERN UPDATES AT WINDHAMFABRICS.COM'S FREE PROJECTS SECTION.






Pickle Dish Wholecloth

PROJECT DISCLAIMER: Every effort has been made to ensure that all projects are error free. All the information is presented in good faith, however, no warranty can be given nor results guaranteed. Therefore, we assume no responsibility nor damages that may occur when referring to this pattern. When errors are brought to our attention, we make every effort to correct and post a revision as soon as possible. We suggest you check windhamfabrics.com for pattern updates and to test the pattern prior to making the project. Test templates first, before cutting all the pieces. Free projects are not for resale.




WOF=WIDTH OF FABRIC

Note: Refer to Cutting Diagram on p. 2 before cutting yardage.

Lap Size 39" x 55"

KEY	FABRIC	SKU	YD	CUTTING INSTRUCTIONS
A		54225-1 Black & White or 54225-2 Red	1-3/4	Trim to approximately 39-1/2" x 55-1/2", cutting 1/4" past edges of a printed block.*
B		WINDHAM SOLIDS: 35370S-2 Jet Black or WINDHAM SOLIDS: 37098-82 Just Red	1/2	(5) 2-1/4" x 42" strips for binding.
		Backing 54227-1 Black & White	2-3/4	Batting 47" x 63"




Twin Size 60" x 90"

KEY	FABRIC	SKU	YD	CUTTING INSTRUCTIONS
A		54225-1 Black & White or 54225-2 Red	5-1/2	Cut (2) 42" x 99" LOF pieces. Trim each piece 1/4" past edges of a printed block on long sides.*
B		WINDHAM SOLIDS: 35370S-2 Jet Black or WINDHAM SOLIDS: 37098-82 Just Red	5/8	(8) 2-1/4" x 42" strips for binding.
		Backing 54227-1 Black & White	5-1/2	Batting 68" x 98"



Pickle Dish Wholecloth

Queen Size 78" x 90"

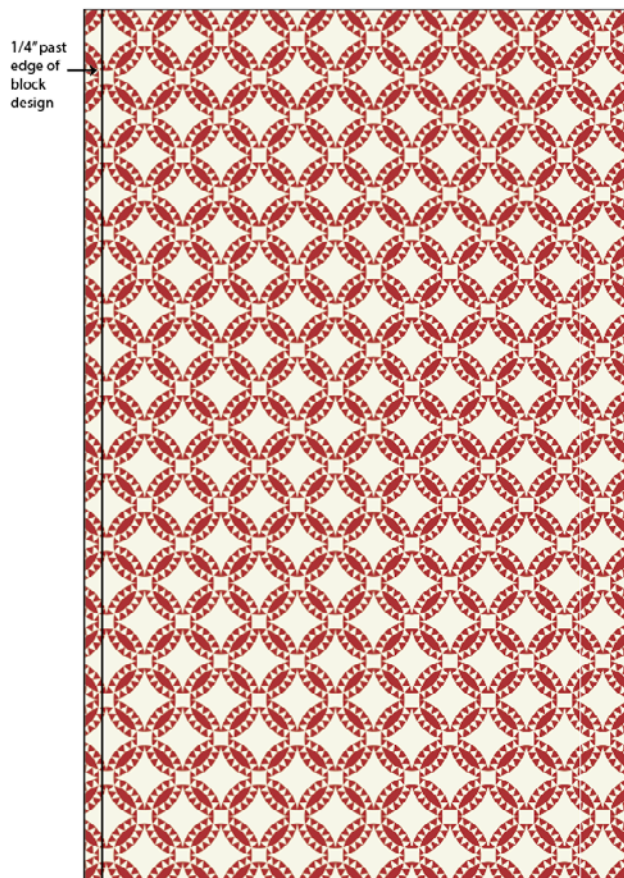
KEY	FABRIC	SKU	YD	CUTTING INSTRUCTIONS
A		54225-1 Black & White or 54225-2 Red	5-1/2	Cut (2) 42" x 99" LOF pieces. Trim each piece 1/4" past edges of a printed block on long sides.*
B		WINDHAM SOLIDS: 35370S-2 Jet Black or WINDHAM SOLIDS: 37098-82 Just Red	3/4	(10) 2-1/4" x 42" strips for binding.
		Backing 54227-1 Black & White	8-1/4	Batting 86" x 98"

CUTTING NOTES

To make your wholecloth look like a pieced quilt, cut fabric so printed block pattern starts and ends at bound quilt edges. Measurements listed in Cutting Chart are approximate; your measurements may vary based on washing fabric, printing variations, etc. Trim fabric pieces to 1/4" past outer edge of block design, using our measurements as a general guide.

*If you prefer, trim yardage to 1/4" past block edge on just the left edge of (1) fabric piece and just the right edge of (1) fabric piece (these will be the joined edges in step 1). After quilting, trim entire quilt to 1/4" past printed blocks.

When joining cut lengths of fabric, align prints so the design continues as seamlessly as possible.





Pickle Dish Wholecloth

MAKING THE LAP QUILT

Layer quilt top (**A** piece measuring approximately $39\text{-}1/2''$ x $55\text{-}1/2''$), batting and backing together to form quilt sandwich. Baste and quilt as desired. Bind using **B** $2\text{-}1/4''$ strips.

MAKING THE TWIN QUILT

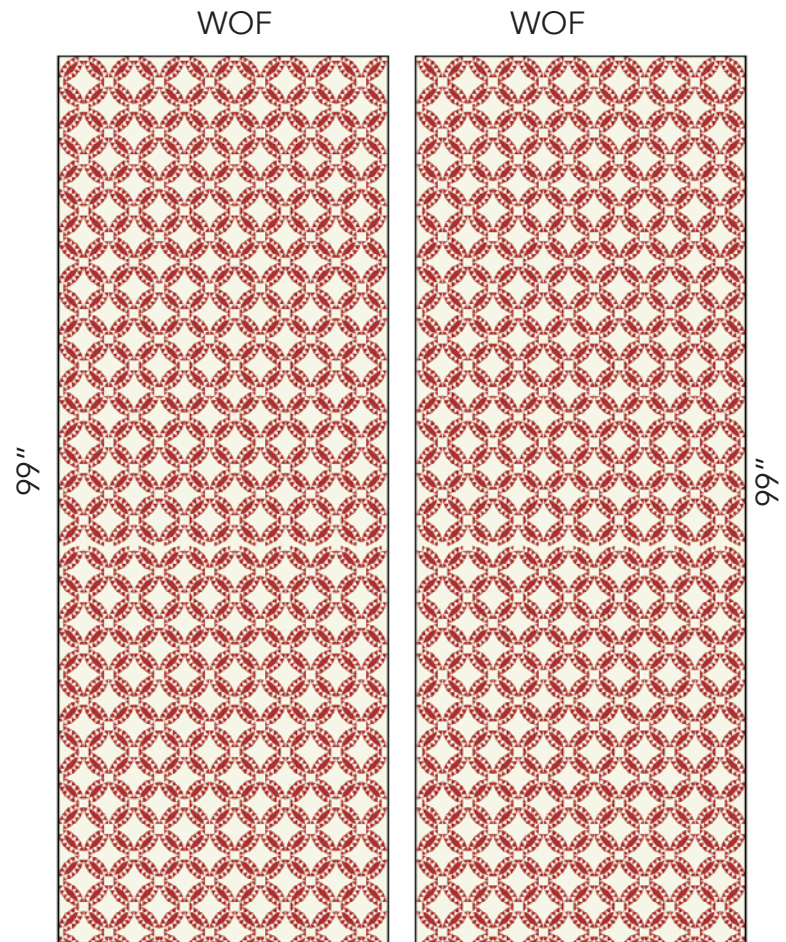
1. Sew (2) $\text{WOF} \times 99''$ **A** pieces together along long edge, aligning pieces so the block design matches and flows continuously. Trim quilt top to measure approximately $65'' \times 94''$.

2. Layer quilt top, batting and backing together to form quilt sandwich. Baste and quilt as desired. Trim quilt to measure approximately $60\text{-}1/2'' \times 90\text{-}1/2''$, trimming $1/4''$ past printed block edges. Bind using **B** $2\text{-}1/4''$ strips.

MAKING THE QUEEN QUILT

1. Sew (2) $\text{WOF} \times 99''$ **A** pieces together along long edge, aligning pieces so the block design matches and flows continuously. Trim quilt top to measure approximately $83'' \times 94''$.

2. Layer quilt top, batting and backing together to form quilt sandwich. Baste and quilt as desired. Trim quilt to measure approximately $78\text{-}1/2'' \times 90\text{-}1/2''$, trimming $1/4''$ past printed block edges. Bind using **B** $2\text{-}1/4''$ strips.



* If you only trimmed one edge of each piece, join these edges in the center.

INTERMEDIATE
SKILL

Windham Star Wholecloth

pattern by Lisa Swenson Ruble
featuring *Perfect Points* by Whistler Studios

SIZES: APPROXIMATELY 41" x 54" (LAP), 60" x 90" (TWIN) OR 78" x 90" (QUEEN)



THIS IS A DIGITAL REPRESENTATION OF THE QUILT TOP, FABRIC MAY VARY.

PLEASE NOTE: BEFORE MAKING YOUR PROJECT, CHECK FOR ANY PATTERN UPDATES AT WINDHAMFABRICS.COM'S FREE PROJECTS SECTION.

FREE
PROJECT





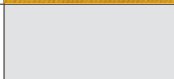
Windham Star Wholecloth

PROJECT DISCLAIMER: Every effort has been made to ensure that all projects are error free. All the information is presented in good faith, however, no warranty can be given nor results guaranteed. Therefore, we assume no responsibility nor damages that may occur when referring to this pattern. When errors are brought to our attention, we make every effort to correct and post a revision as soon as possible. We suggest you check windhamfabrics.com for pattern updates and to test the pattern prior to making the project. Test templates first, before cutting all the pieces. Free projects are not for resale.



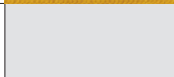
WOF=WIDTH OF FABRIC

Note: Refer to Cutting Diagram on p. 2 before cutting yardage.

Lap Size 41" x 54"

KEY	FABRIC	SKU	YD	CUTTING INSTRUCTIONS
A		54230-7 Yellow	1-3/4	Trim to approximately WOF" x 60"
B		PALETTE: 37098-6 Mustard	1/2	(5) 2-1/4" x 42" strips for binding.
		Backing	2-3/4	Batting 49" x 62"



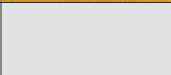
Twin Size 60" x 90"

KEY	FABRIC	SKU	YD	CUTTING INSTRUCTIONS
A		54230-7 Yellow	5-1/2	Cut (2) 42" x 99" LOF pieces. Trim each piece 1/4" past edges of a printed block on long sides.*
B		PALETTE: 37098-6 Mustard	5/8	(8) 2-1/4" x 42" strips for binding.
		Backing	5-1/2	Batting 68" x 98"



Windham Star Wholecloth

Queen Size 78" x 90"

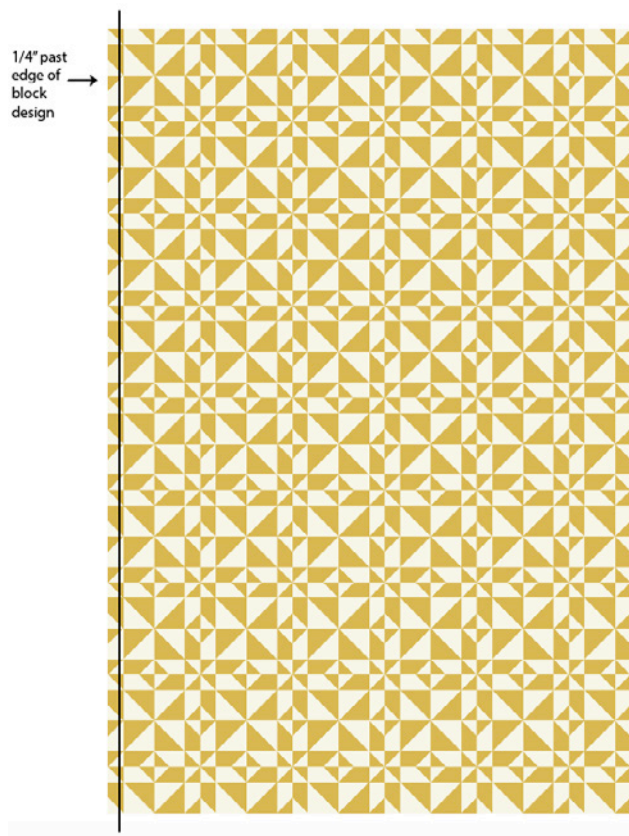
KEY	FABRIC	SKU	YD	CUTTING INSTRUCTIONS
A		54230-7 Yellow	5-1/2	Cut (2) 42" x 99" LOF pieces. Trim each piece 1/4" past edges of a printed block on long sides.*
B		PALETTE: 37098-6 Mustard	3/4	(10) 2-1/4" x 42" strips for binding.
		Backing	8-1/4	Batting 86" x 98"

CUTTING NOTES

To make your wholecloth look like a pieced quilt, cut fabric so printed block pattern starts and ends at bound quilt edges. Measurements listed in Cutting Chart are approximate; your measurements may vary based on washing fabric, printing variations, etc. Trim fabric pieces to 1/4" past outer edge of block design, using our measurements as a general guide.

*If you prefer, trim yardage to 1/4" past block edge on just the left edge of (1) fabric piece and just the right edge of (1) fabric piece (these will be the joined edges in step 1). After quilting, trim entire quilt to 1/4" past printed blocks.

When joining cut lengths of fabric, align prints so the design continues as seamlessly as possible.





Windham Star Wholecloth

MAKING THE LAP QUILT

Layer quilt top (**A** piece measuring approximately 41-1/2" x 54-1/2"), batting and backing together to form quilt sandwich. Baste and quilt as desired. Bind using **B** 2-1/4" strips.

MAKING THE TWIN QUILT

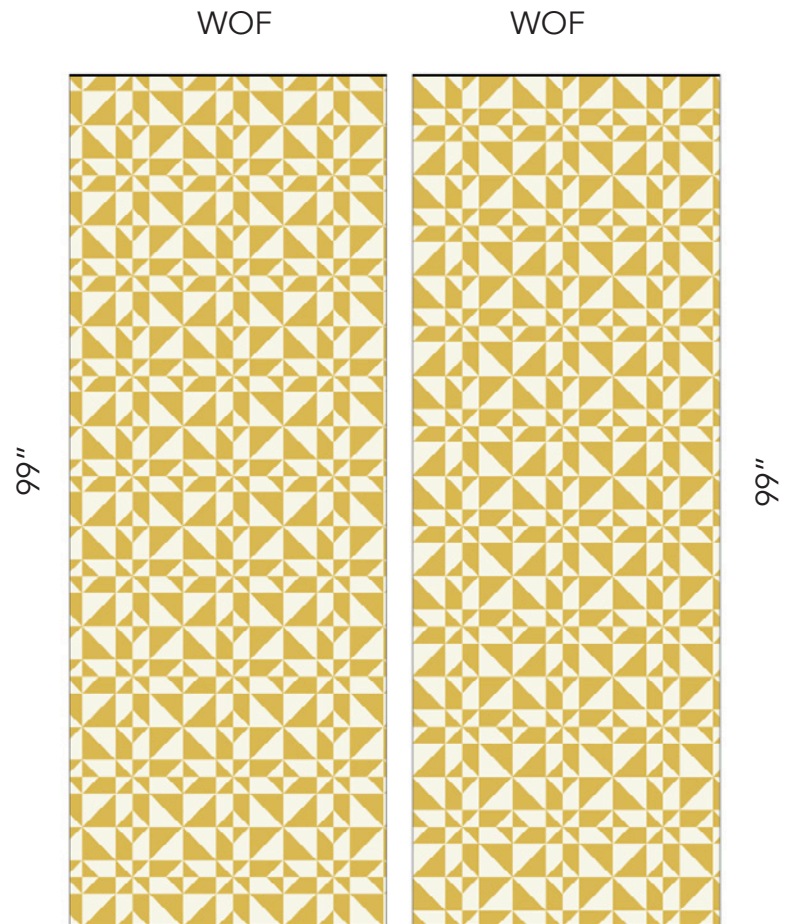
1. Sew (2) WOF x 99" **A** pieces together along long edge, aligning pieces so the block design matches and flows continuously. Trim quilt top to measure approximately 64" x 94".

2. Layer quilt top, batting and backing together to form quilt sandwich. Baste and quilt as desired. Trim quilt to measure approximately 60-1/2" x 90-1/2", trimming 1/4" past printed block edges. Bind using **B** 2-1/4" strips.

MAKING THE QUEEN QUILT

1. Sew (2) WOF x 99" **A** pieces together along long edge, aligning pieces so the block design matches and flows continuously. Trim quilt top to measure approximately 82" x 94".

2. Layer quilt top, batting and backing together to form quilt sandwich. Baste and quilt as desired. Trim quilt to measure approximately 78-1/2" x 90-1/2", trimming 1/4" past printed block edges. Bind using **B** 2-1/4" strips.



* If you only trimmed one edge of each piece, join these edges in the center.